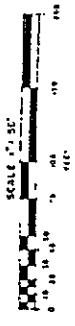
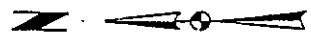
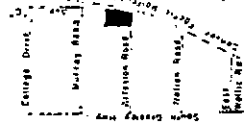




VICINITY MAP

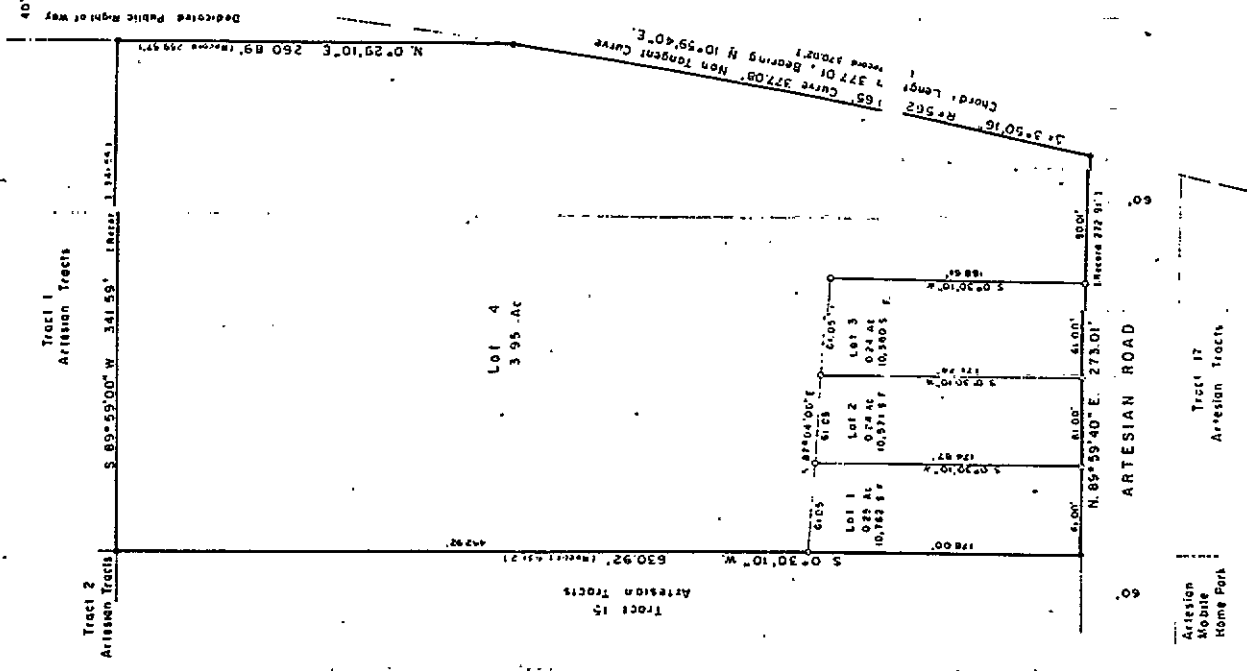


FINAL PLAT
SCHUMM SUBDIVISION

A Replat of

TRACT 16, ARTESIAN TRACTS

Situated in Section 17, T-13-N, R-66-W of the 6th P.M.
LARAMIE COUNTY WYOMING



BEARING NOTE
Basis of bearings is the bearing of record for the north boundary of Artesian Tracts.

MONUMENT LEGEND

- Found No. 5 Replat with Aluminum Cap - P.E./L.S. 662
- Found Iron Pipe
- Set No. 5 Replat with Aluminum Cap - P.E./L.S. 662

DEDICATION

Know all men by these presents that Paul J. Schumm and Sue Schumm, owners in fee simple of the lands embraced in this plat of Schumm Subdivision as shown herein, do hereby dedicate the subdivision of land hereon, as it appears on this plat, to be their free and clear and in accordance with their desires.

Paul J. Schumm
Paul J. Schumm
Sue Schumm

ACKNOWLEDGEMENT

State of Wyoming ss
County of Laramie ss

The foregoing Dedication was signed and acknowledged before me by Paul J. Schumm and Sue Schumm this 21st day of June, 1982, without my fraud and without duress.

Spencer L. Barber
Spencer L. Barber
Notary Public

CERTIFICATE OF SURVEYOR

State of Wyoming ss
County of Laramie ss

I, Edward C. Fry, a registered Professional Engineer and Land Surveyor, do hereby certify that this Plat was prepared from notes taken during an actual survey made under my direct supervision in June and July 1982 and that, to the best of my belief and knowledge, correctly represents the results of that survey as manifested on the ground and indicated herein.

Edward C. Fry
Edward C. Fry
Wyoming Registration P.E. No. 682

APPROVALS

Approved by the Cheyenne-Laramie County Regional Planning Commission this 21st day of June, 1982.

Thomas J. [Signature]
Thomas J. [Signature]
Chairman

Approved by the Board of County Commissioners of Laramie County, Wyoming this 21st day of June, 1982.

James E. [Signature]
James E. [Signature]
Chairman of the Board

Paul J. Schumm
Paul J. Schumm
Sue Schumm
49