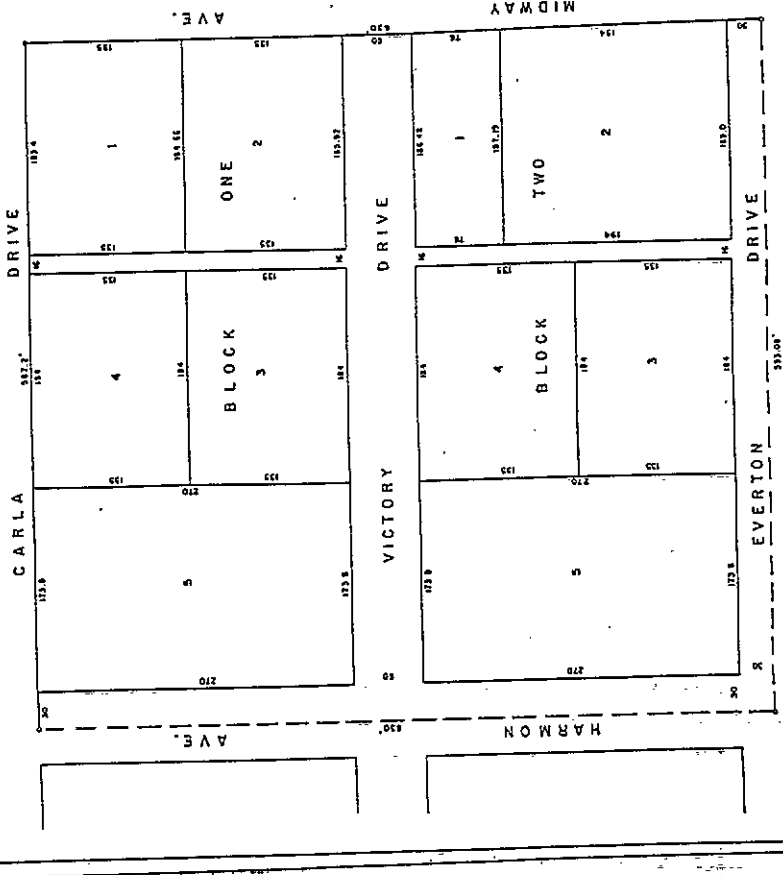




23-107-100



**SURVEYOR'S CERTIFICATE**

State of Wyoming }  
 County of Laramie }  
 I, Matthew D. Martin, of Cheyenne, Wyoming, being duly sworn, depose and say that SEAVEY'S SUBDIVISION was made by me on July 1, 1950, and is correctly represented on the plat, blocks, streets and alleys as marked on the ground by lot, 1/4 sec 34 of T14N R10E S4E and was split out of all other lots therein; and that the land included in this subdivision is as of Tract 16, 2nd Range Addition, Second Filing, Laramie County, Wyoming.

*Matthew D. Martin*  
 (Plat Reg. No. 1228)

**ACKNOWLEDGEMENT**

State of Wyoming }  
 County of Laramie }  
 On this 2nd day of July, A.D. 1950, before me, a Notary Public in and for the State of Wyoming, personally appeared Earl Seaver and Evelyn Seaver, in me known to be the persons who executed the within and foregoing instrument and the contents of which and instrument is the same as that which is herein set forth, and they acknowledged to me that they executed the same for the purposes and intents therein expressed.

*Earl Seaver*  
 Notary Public

Notary at Cheyenne, Wyoming  
 APPROVAL  
 Expired by the City Commission of the City of Cheyenne this 2nd day of August, A.D., 1950.

*Richard L. ...*  
 Mayor

APPROVAL  
 Approved by the Board of County Commissioners of Laramie County, Wyoming, this 2nd day of July, A.D., 1950.

*Earl Seaver*  
 County Clerk

**DEDICATION**

Know all men by these presents, that Earl E. Seaver and Evelyn Seaver, owners in fee simple of the land embraced in this plat and description of SEAVEY'S SUBDIVISION, do hereby dedicate the subdivision of the aforesaid described land to the use of the public, which dedication shall take effect from the date of this plat, and they shall have no claim or interest in the use of the public forever.

Witness *Earl Seaver* *Evelyn Seaver*  
 without *Earl Seaver* *Evelyn Seaver*

SEAVEY'S SUBDIVISION OF  
 TRACT 16, 2ND RANGE ADDITION,  
 SECOND FILING  
 LARAMIE COUNTY, WYOMING

Scale 1" = 50' July, 1950

S