

**DEDICATION**

BEFORE ALL PERSONS BY THESE PRESENTS, I, the said Sheriff and Page J. Sherwin, Sheriff and Page J. Sherwin, County Clerk of the County of Laraine, State of Missouri, do hereby certify that the following described land, situated in the County of Laraine, State of Missouri, more particularly described as follows:

Beginning at a point on the south line of the said subdivision which point is located at the intersection of the north line of the said subdivision and the south line of the said subdivision, and running north along the north line of the said subdivision to the north line of the said subdivision, a distance of 100 feet, then east along the east line of the said subdivision, a distance of 100 feet to a point on the east line of the said subdivision, then south along the south line of the said subdivision, a distance of 100 feet to a point on the south line of the said subdivision, then west along the west line of the said subdivision, a distance of 100 feet to a point on the west line of the said subdivision, then north along the north line of the said subdivision, a distance of 100 feet to the point of beginning, consisting of 1.77 acres more or less.

Has caused the same to be surveyed and shown as herein shown, and this plat, as so shown, to be filed for record in the office of the County Clerk of the County of Laraine, State of Missouri, and that the same be and it is hereby dedicated to the use of the public for the purpose and intent herein expressed.

*John H. Sherwin* Sheriff  
*Page J. Sherwin* County Clerk

**ACKNOWLEDGEMENT**

STATE OF MISSOURI )  
COUNTY OF LARAINE ) ss

The dedication instrument was acknowledged before me this 25th day of March, 1933, by Ted Sherwin and Page J. Sherwin, both of whom are the persons named in the instrument.

*David G. Sted*  
Notary Public in and for the County of Laraine, Missouri

**APPROVALS**

Approved by the Board of Commissioners, County of Laraine, Missouri, on this 25th day of March, 1933.

*Development Director*

Approved by the Board of County Commissioners of Laraine County, Missouri, on this 25th day of March, 1933.

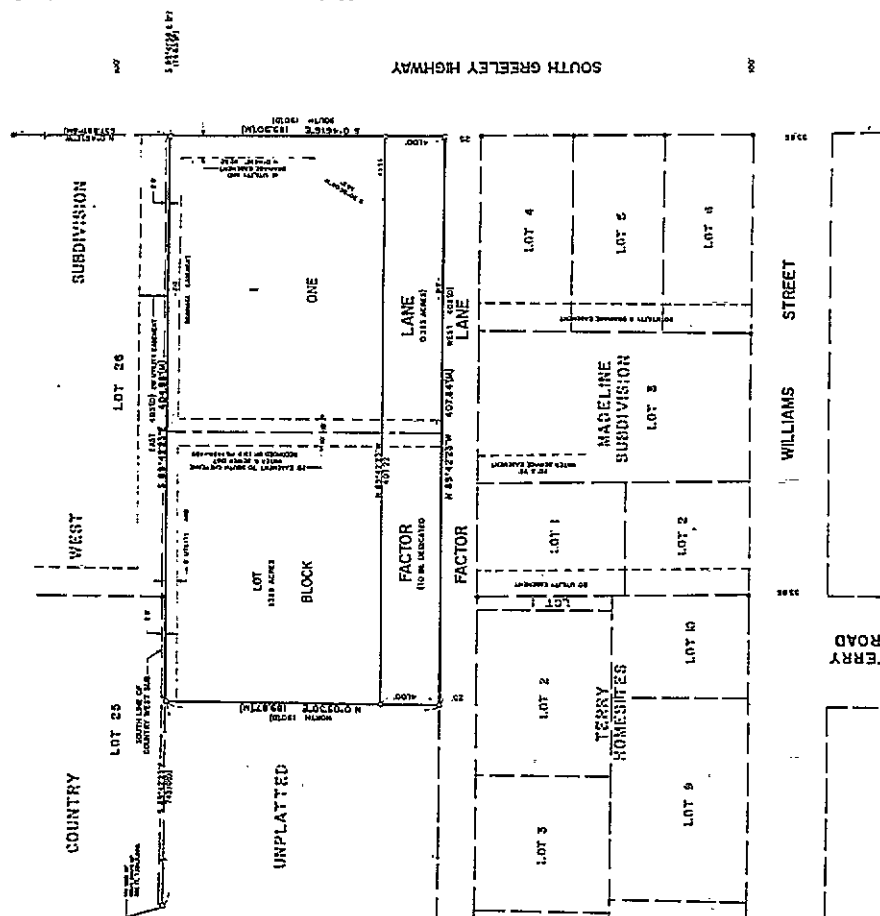
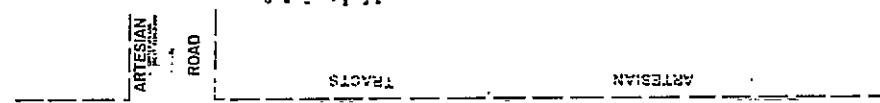


**CERTIFICATE OF SURVEY**

I, the undersigned, Registered Professional Land Surveyor in the State of Missouri, was present from official plates and books of record at the time the above described land was surveyed and subdivided as shown on the attached plat, and that this plat correctly represents said survey of the land shown hereon to the best of my knowledge.



- LEGEND**
- 1. Public Land
  - 2. Private Land
  - 3. Right of Way
  - 4. Easement
  - 5. Encumbrance
  - 6. Survey Line
  - 7. Boundary Line
  - 8. Corner Mark
  - 9. Well
  - 10. Road
  - 11. Artesian Well
- NOTES**
- 1. All lots are shown with their original boundaries.
  - 2. All lots are shown with their original areas.
  - 3. All lots are shown with their original bearings.
  - 4. All lots are shown with their original distances.
  - 5. All lots are shown with their original bearings and distances.
  - 6. All lots are shown with their original bearings and distances.
  - 7. All lots are shown with their original bearings and distances.
  - 8. All lots are shown with their original bearings and distances.
  - 9. All lots are shown with their original bearings and distances.
  - 10. All lots are shown with their original bearings and distances.
  - 11. All lots are shown with their original bearings and distances.



**VICINITY MAP**

**INDEX RECORD**

*John H. Sherwin*  
Sheriff

*Page J. Sherwin*  
County Clerk

**SHERAR SUBDIVISION**  
A SUBDIVISION SITUATED IN A PORTION OF THE COUNTY OF LARAINE, MISSOURI.  
LARAINE COUNTY, MISSOURI  
REGISTERED LAND SURVEYORS