

LAND DESCRIPTION

THE SOUTHERN PORTION OF LOT 1, BLOCK 2, AND THE SOUTH 40 FEET OF LOT 16, BLOCK 6, AND THE SOUTH 40 FEET OF LOT 10, BLOCK 8, OF THE CITY OF CHEYENNE, WYOMING, IN THE SHERIDAN STREET AND DRY CREEK CHANNEL RIGHTS-OF-WAY.

DEDICATION

I, JAMES HANCOCK, CITY ENGINEER, ACTING IN MY OFFICIAL CAPACITY FOR THE CITY OF CHEYENNE, WYOMING, HEREBY DEDICATE TO THE PUBLIC THE PORTION OF SHERIDAN STREET AND DRY CREEK CHANNEL RIGHTS-OF-WAY AS SHOWN HEREON TO THE PUBLIC FOREVER.

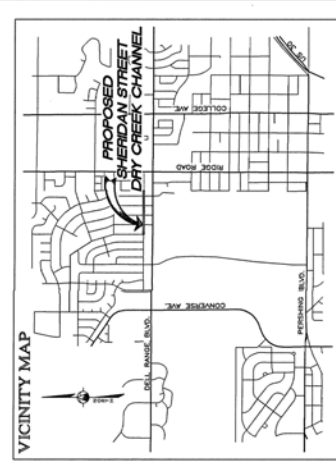
ACKNOWLEDGEMENTS

STATE OF WYOMING }
COUNTY OF LARAMIE } ss
I, James Hancock, City Engineer,
City of Cheyenne, do hereby acknowledge that the above described portion of
Sheridan Street and Dry Creek Channel Rights-of-Way were dedicated to the public
by James Hancock, City Engineer, on Dec. 4, 1997 at 10:00 AM.
My Commission Expires: Dec. 4, 1999

APPROVALS

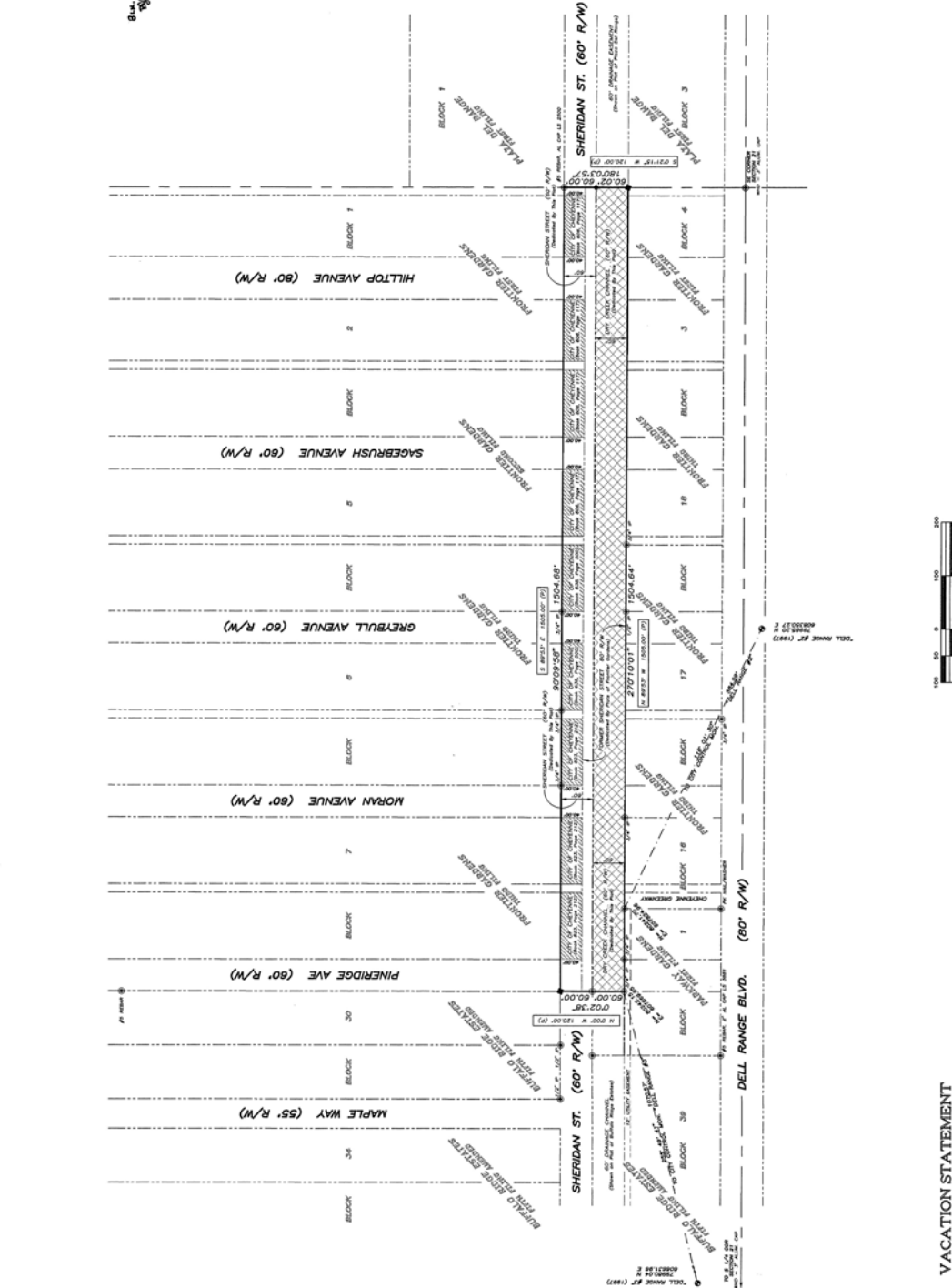
APPROVED BY THE CHEYENNE-LARAMIE COUNTY REGIONAL PLANNING COMMISSION
THIS 11th DAY OF February, 1998.
[Signature]
DEVELOPMENT DIRECTOR

APPROVED BY THE CITY COUNCIL OF CHEYENNE, WYOMING, THIS 23rd DAY OF
February, 1998.
[Signature]
CITY CLERK



SHERIDAN STREET AND DRY CREEK CHANNEL RIGHTS-OF-WAY

A REPLAT OF
PORTIONS OF BLOCKS 1 & 2, FRONTIER GARDENS
FIRST FILING AND BLOCKS 2 & 5, FRONTIER GARDENS
SECOND FILING AND PORTIONS OF SHERIDAN ST., PINERIDGE AVE
AND HILTOP AVE, FIRST FILING AND PORTIONS OF SAGEBRUSH AVE, MORAN AVE
AND MAPLE WAY, SECOND FILING AND PORTIONS OF SAGEBRUSH AVE AND HILTOP AVE,
ALL BEING PORTIONS OF THE SHERIDAN STREET AND DRY CREEK CHANNEL
RIGHTS-OF-WAY IN THE CITY OF CHEYENNE,
SECTION 01 T. 18 N. R. 6 W. S. 38 E. P. 1.
LARAMIE COUNTY, WYOMING



CERTIFICATE OF SURVEYOR

I, BECKY J. BRAMAN, A PROFESSIONAL LAND SURVEYOR IN THE STATE OF WYOMING, DO HEREBY CERTIFY THAT THE ABOVE DESCRIBED PARCELS AND BOUNDARIES SHOWN ON THE MAP HEREON WERE PREPARED FROM THE FIELD BY ME OR UNDER MY CLOSE PERSONAL SUPERVISION AND I HAVE ACCURATELY AND CORRECTLY REPRESENTED THE SAME ON THE MAP. I HAVE ALSO VERIFIED THAT THE SURVEY DATA AND CALCULATIONS SHOWN ON THE MAP ARE CORRECT AND ACCURATE. I HAVE ALSO VERIFIED THAT THE BOUNDARIES SHOWN ON THE MAP ARE CORRECT AND ACCURATE. I HEREBY CERTIFY THAT THE PROPERTY CORNERS AS INDICATED HEREON HAVE BEEN SET AT THIS TIME.

Becky J. Braman
BECKY J. BRAMAN, A PROFESSIONAL LAND SURVEYOR
STATE OF WYOMING
DATED: April 2, 1998

VACATION STATEMENT

THIS PLAN REFERRED TO MAPS 18, 19, 20, 21, 22, 23, 24, 25, 26, 27, 28, 29, 30, 31, 32, 33, 34, 35, 36, 37, 38, 39, 40, 41, 42, 43, 44, 45, 46, 47, 48, 49, 50, 51, 52, 53, 54, 55, 56, 57, 58, 59, 60, 61, 62, 63, 64, 65, 66, 67, 68, 69, 70, 71, 72, 73, 74, 75, 76, 77, 78, 79, 80, 81, 82, 83, 84, 85, 86, 87, 88, 89, 90, 91, 92, 93, 94, 95, 96, 97, 98, 99, 100, 101, 102, 103, 104, 105, 106, 107, 108, 109, 110, 111, 112, 113, 114, 115, 116, 117, 118, 119, 120, 121, 122, 123, 124, 125, 126, 127, 128, 129, 130, 131, 132, 133, 134, 135, 136, 137, 138, 139, 140, 141, 142, 143, 144, 145, 146, 147, 148, 149, 150, 151, 152, 153, 154, 155, 156, 157, 158, 159, 160, 161, 162, 163, 164, 165, 166, 167, 168, 169, 170, 171, 172, 173, 174, 175, 176, 177, 178, 179, 180, 181, 182, 183, 184, 185, 186, 187, 188, 189, 190, 191, 192, 193, 194, 195, 196, 197, 198, 199, 200, 201, 202, 203, 204, 205, 206, 207, 208, 209, 210, 211, 212, 213, 214, 215, 216, 217, 218, 219, 220, 221, 222, 223, 224, 225, 226, 227, 228, 229, 230, 231, 232, 233, 234, 235, 236, 237, 238, 239, 240, 241, 242, 243, 244, 245, 246, 247, 248, 249, 250, 251, 252, 253, 254, 255, 256, 257, 258, 259, 260, 261, 262, 263, 264, 265, 266, 267, 268, 269, 270, 271, 272, 273, 274, 275, 276, 277, 278, 279, 280, 281, 282, 283, 284, 285, 286, 287, 288, 289, 290, 291, 292, 293, 294, 295, 296, 297, 298, 299, 300, 301, 302, 303, 304, 305, 306, 307, 308, 309, 310, 311, 312, 313, 314, 315, 316, 317, 318, 319, 320, 321, 322, 323, 324, 325, 326, 327, 328, 329, 330, 331, 332, 333, 334, 335, 336, 337, 338, 339, 340, 341, 342, 343, 344, 345, 346, 347, 348, 349, 350, 351, 352, 353, 354, 355, 356, 357, 358, 359, 360, 361, 362, 363, 364, 365, 366, 367, 368, 369, 370, 371, 372, 373, 374, 375, 376, 377, 378, 379, 380, 381, 382, 383, 384, 385, 386, 387, 388, 389, 390, 391, 392, 393, 394, 395, 396, 397, 398, 399, 400, 401, 402, 403, 404, 405, 406, 407, 408, 409, 410, 411, 412, 413, 414, 415, 416, 417, 418, 419, 420, 421, 422, 423, 424, 425, 426, 427, 428, 429, 430, 431, 432, 433, 434, 435, 436, 437, 438, 439, 440, 441, 442, 443, 444, 445, 446, 447, 448, 449, 450, 451, 452, 453, 454, 455, 456, 457, 458, 459, 460, 461, 462, 463, 464, 465, 466, 467, 468, 469, 470, 471, 472, 473, 474, 475, 476, 477, 478, 479, 480, 481, 482, 483, 484, 485, 486, 487, 488, 489, 490, 491, 492, 493, 494, 495, 496, 497, 498, 499, 500, 501, 502, 503, 504, 505, 506, 507, 508, 509, 510, 511, 512, 513, 514, 515, 516, 517, 518, 519, 520, 521, 522, 523, 524, 525, 526, 527, 528, 529, 530, 531, 532, 533, 534, 535, 536, 537, 538, 539, 540, 541, 542, 543, 544, 545, 546, 547, 548, 549, 550, 551, 552, 553, 554, 555, 556, 557, 558, 559, 560, 561, 562, 563, 564, 565, 566, 567, 568, 569, 570, 571, 572, 573, 574, 575, 576, 577, 578, 579, 580, 581, 582, 583, 584, 585, 586, 587, 588, 589, 590, 591, 592, 593, 594, 595, 596, 597, 598, 599, 600, 601, 602, 603, 604, 605, 606, 607, 608, 609, 610, 611, 612, 613, 614, 615, 616, 617, 618, 619, 620, 621, 622, 623, 624, 625, 626, 627, 628, 629, 630, 631, 632, 633, 634, 635, 636, 637, 638, 639, 640, 641, 642, 643, 644, 645, 646, 647, 648, 649, 650, 651, 652, 653, 654, 655, 656, 657, 658, 659, 660, 661, 662, 663, 664, 665, 666, 667, 668, 669, 670, 671, 672, 673, 674, 675, 676, 677, 678, 679, 680, 681, 682, 683, 684, 685, 686, 687, 688, 689, 690, 691, 692, 693, 694, 695, 696, 697, 698, 699, 700, 701, 702, 703, 704, 705, 706, 707, 708, 709, 710, 711, 712, 713, 714, 715, 716, 717, 718, 719, 720, 721, 722, 723, 724, 725, 726, 727, 728, 729, 730, 731, 732, 733, 734, 735, 736, 737, 738, 739, 740, 741, 742, 743, 744, 745, 746, 747, 748, 749, 750, 751, 752, 753, 754, 755, 756, 757, 758, 759, 760, 761, 762, 763, 764, 765, 766, 767, 768, 769, 770, 771, 772, 773, 774, 775, 776, 777, 778, 779, 780, 781, 782, 783, 784, 785, 786, 787, 788, 789, 790, 791, 792, 793, 794, 795, 796, 797, 798, 799, 800, 801, 802, 803, 804, 805, 806, 807, 808, 809, 810, 811, 812, 813, 814, 815, 816, 817, 818, 819, 820, 821, 822, 823, 824, 825, 826, 827, 828, 829, 830, 831, 832, 833, 834, 835, 836, 837, 838, 839, 840, 841, 842, 843, 844, 845, 846, 847, 848, 849, 850, 851, 852, 853, 854, 855, 856, 857, 858, 859, 860, 861, 862, 863, 864, 865, 866, 867, 868, 869, 870, 871, 872, 873, 874, 875, 876, 877, 878, 879, 880, 881, 882, 883, 884, 885, 886, 887, 888, 889, 890, 891, 892, 893, 894, 895, 896, 897, 898, 899, 900, 901, 902, 903, 904, 905, 906, 907, 908, 909, 910, 911, 912, 913, 914, 915, 916, 917, 918, 919, 920, 921, 922, 923, 924, 925, 926, 927, 928, 929, 930, 931, 932, 933, 934, 935, 936, 937, 938, 939, 940, 941, 942, 943, 944, 945, 946, 947, 948, 949, 950, 951, 952, 953, 954, 955, 956, 957, 958, 959, 960, 961, 962, 963, 964, 965, 966, 967, 968, 969, 970, 971, 972, 973, 974, 975, 976, 977, 978, 979, 980, 981, 982, 983, 984, 985, 986, 987, 988, 989, 990, 991, 992, 993, 994, 995, 996, 997, 998, 999, 1000

NOTES

- 1) BASES OF AZIMUTH - CITY OF CHEYENNE DATUM (1984) BY CLOSED TRAVERSE THROUGH "DELL RANGE #3" AND "DELL RANGE #2". AZIMUTHS ARE ANGLES RIGHT FROM NORTH.
- 2) COORDINATES SHOWN ARE GROUND DATUM BASED ON CONTROL STATION "DELL RANGE #3".
- 3) FOUND MONUMENT - REBAR WITH 1.5" ALUMINUM CAP (EXCEPT AS NOTED OTHERWISE).
- 4) SET 5/8" x 24" REBAR WITH 2" ALUMINUM CAP. (STAMPED "MPS - LS 3887")
- 5) SET 5/8" x 24" REBAR WITH 1.2" ALUMINUM CAP. (STAMPED "MPS - LS 3887")
- 6) PEGGS - 100% = 4.14 Acres (63.07 Ac. N/4 / 23.07 Ac. S/4 + 2.00 Ac. Storage Eastment)
- 7) 207233F - 4767Z (0)

PROJECT: 3032
DATE: 12/02/97
SURVEYOR: JAG/BJB
DRAWN BY: WDB

INTERMOUNTAIN PROFESSIONAL SERVICES, INC.
5801 OSAGE AVENUE CHEYENNE, WYOMING 82009 PHONE: (307) 632-3138

SHERIDAN STREET & DRY CREEK CHANNEL RIGHTS-OF-WAY
FINAL PLAT
PROJECT: 3032
Sheet 1
of 1