

CERTIFICATE of SURVEYOR

State of Wyoming } ss.
County of Laramie }

I, R.L. Hudson, a Land Surveyor registered in the State of Wyoming, do hereby certify that this plat of Skyline View has been prepared from the field notes of surveys made by me during January and December, 1976, and that it correctly and accurately represents said surveys of the block, lots and easements as shown hereon.

I further certify that said Skyline View is a subdivision embracing all the following described land situated in Laramie County, Wyoming; to wit:

Beginning at a point from which the the northwest corner of Tract 7, Skyline Tracts, bears S 89° 42' 30" E, 30.00 feet distant; thence N 89° 42' 30" W, a distance of 124.85 feet; thence S 89° 57' 30" W, a distance of 169.69 feet; thence S 0° 00' 30" E, a distance of 340.00 feet; thence S 89° 53' E, a distance of 294.68 feet; thence N 0° 02' W, a distance of 340.09 feet to the point of beginning; situate in the SE 1/4 of Section 18, T. 14 N., R. 66 W., 6th P.M. and containing 2.301 acres, more or less.



R.L. Hudson
Wyoming L.S. No. 519

DECLARATION

KNOW ALL MEN BY THESE PRESENTS; that Mary L. Tuttle and Robert W. Holmquist, owners in fee simple of the land embraced in this subdivision, do hereby declare the subdivision of the aforescribed lands, as appears on this plat, to be their free and voluntary act and deed and in accordance with their desires do hereby grant, for the specified purpose, the easements shown hereon.

Attest: *Thomas D. Newman*, *Mary L. Tuttle*
Mary L. Tuttle

Attest: *Thomas D. Newman*, *Robert W. Holmquist*
Robert W. Holmquist

ACKNOWLEDGEMENT

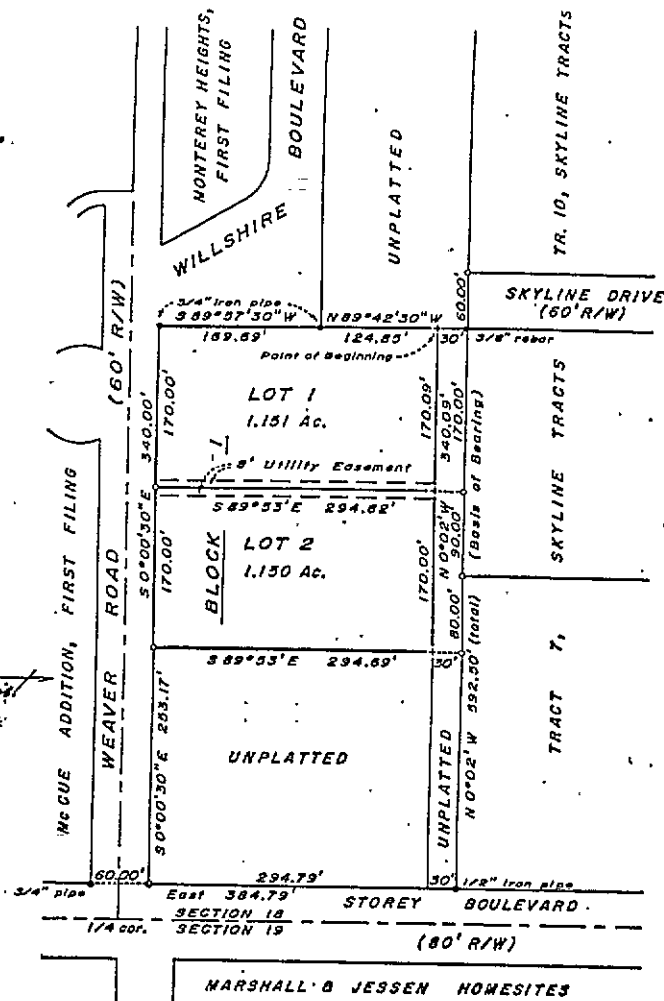
State of Wyoming } ss.
County of Laramie }

The foregoing Declaration was acknowledged before me by *Mary L. Tuttle* and *Robert W. Holmquist* this 22 day of February, 1977.

IN WITNESS WHEREOF, I have hereunto set my hand and official seal of my office.

My commission expires 2-15-80.

Loraine Wilson
Notary Public



APPROVALS

Approved by the Cheyenne-Laramie County Regional Planning Commission this 22 day of February, 1977.

Clayton Dennis
Secretary

Thomas D. Newman
Chairman

Approved by the City Council of the City of Cheyenne this 25 day of April, 1977.

Jane Crawford
City Clerk

Don Erickson
Mayor

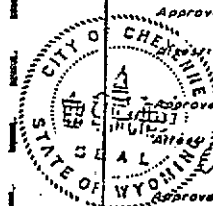
Approved by the Board of County Commissioners of Laramie County this 3rd day of April, 1977.

Attest: *Janet C. Whitcomb*
County Clerk

Don Lewis
VICE-Chairman of the Board

NOTES

1. e denotes monument found, as shown.
2. o denotes 3/8" x 24" long rebar w/ SurvKAP set.
3. Basis of Bearing - As shown, call of official plat of Skyline Tracts.
4. Distances based on measurements by electronic means.



FILING RECORD

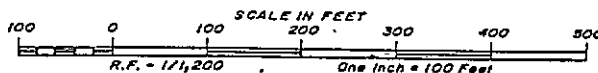
439019
The State of Wyoming } ss.
County of Laramie }

This instrument was filed for record at 10:23 o'clock P. M. on the 19th day of May, A.D. 1977 and duly recorded in Platbook # 10 on page 23A.

Janet C. Whitcomb
County Clerk - Recording Division at Cheyenne
Christina Guyer

PLAT OF
Skyline View

A SUBDIVISION SITUATE IN THE SE 1/4 OF SEC. 18,
T. 14 N., R. 66 W., 6th P.M.
LARAMIE COUNTY, WYOMING



R.L. HUDSON - LAND SURVEYOR
Cheyenne, Wyoming
February 1977
Job No. 76-703