

DEDICATION

Know all men by these presents,

That Ricky D. Smith and Autha Jean Smith, one owners in fee simple of the land embraced in this plat, do hereby declare the subdivision of said land to be their act and deed and in accordance with their desires and hereby grant the easements as shown for the purposes indicated herein.

Ricky D. Smith
Ricky D. Smith

ACKNOWLEDGMENTS

State of Wyoming
County of Laramie

The foregoing instrument was acknowledged before me by Ricky D. Smith and Autha Jean Smith on this 6th day of June, 1998, witness my hand and official seal.

Maurya E. Hinkle
Notary Public

My Commission Expires June 14, 1999

SURVEYOR'S CERTIFICATE

I, S.D. Dawson, a registered land surveyor in the State of Wyoming, do hereby certify that the survey of the Final Plat of Survey Subdivided by me during the month of November, 1997, and that it correctly represents the subdivision and monuments found during this survey, and monuments to be set following the approval of this plat by the governing authorities.



S.D. Dawson, Wyoming RLS No. 555

APPROVALS

Approved by the Cheyenne-Laramie County Regional Planning Commission

This 22nd day of February, 1998
[Signature]
Development Director

Approved by the County Commissioners of Laramie County, Wyoming, This 22nd day of February, 1998

[Signature]
Chairman
County Clerk

Approved by the City Council of the City of Cheyenne, Wyoming, This 22nd day of February, 1998

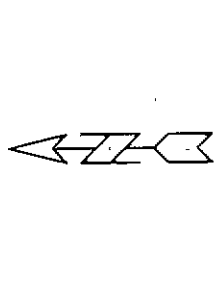
[Signature]
Mayor
City Clerk

**FINAL PLAT
SMITH SUBDIVISION
A PORTION OF THE W1/2
OF TRACT 23,
ALLISON TRACTS,
SECTION 8, T13N, R66W, 6th P.M.,
LARAMIE COUNTY, WYOMING**

Date of Preparation: January 3, 1998

FILED
LARAMIE COUNTY, WYOMING
RECORDED
INDEXED
JAN 13 1998
BY [Signature]

FINAL PLAT
SMITH SUBDIVISION
SECTION 8, T13N, R66W, 6th P.M.
LARAMIE COUNTY, WYOMING



LEGAL DESCRIPTION

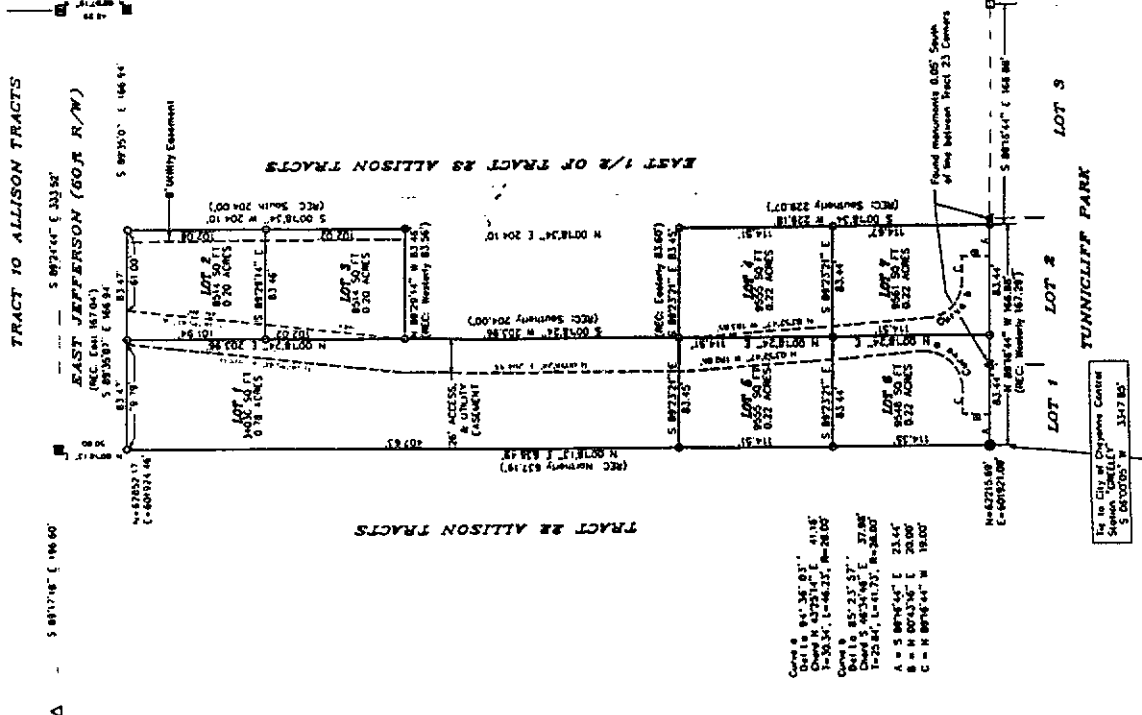
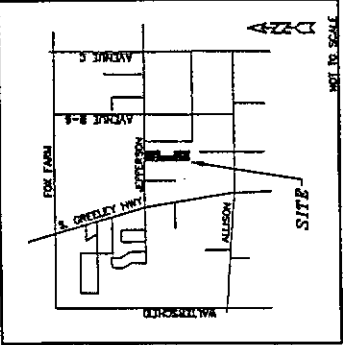
Per Book 1233 Page 857 Laramie County, Corri's Record
Beginning at the Northwest Corner of Tract 23 in Allison Tracts, located in Section 8, T13N, R66W, 6th P.M., Laramie County, Wyoming, thence East along the northern boundary of Tract 23 a distance of 167.04', thence South along a line intersecting Tract 23 a distance of 204.00' to a point, thence North along a line intersecting Tract 23 a distance of 204.00' to a point, thence East along a line intersecting the W1/2 of Tract 23 a distance of 63.60' to a point, thence South along the Eastern boundary of the W1/2 of Tract 23 a distance of 229.07', thence West along the southern boundary of Tract 23 a distance of 167.29', thence North along the Western boundary of Tract 23 a distance of 637.19' to the point of beginning, said parcel lying within the W1/2 of Tract 23 in Allison Tracts, Laramie County, Wyoming.

NO PUBLIC MAINTENANCE OF PRIVATE ROAD

LEGEND

- △ - Found Aluminum Capped Rebar
- - Found 1" Smooth Rod
- - Found 3/4" Rebar with Damaged Aperture Cap 15423 Street
- - Found 3/4" Rebar
- - Found 1/2" Rebar
- - Set 1-1/2" Aluminum Cap on Survey Point and Initial Substation on the South Line of Tract 23 of S. 8662330' (33346 S.D. Dawson W15 305

VICINITY SKETCH



CORNERSTONE SURVEYING COMPANY
4006 Snyder Avenue
Cheyenne, Wyoming 82001
307-321-8800

Surveyed by S.A.
Plat No. 100
S.E. Cornerstone
S.A. Cornerstone