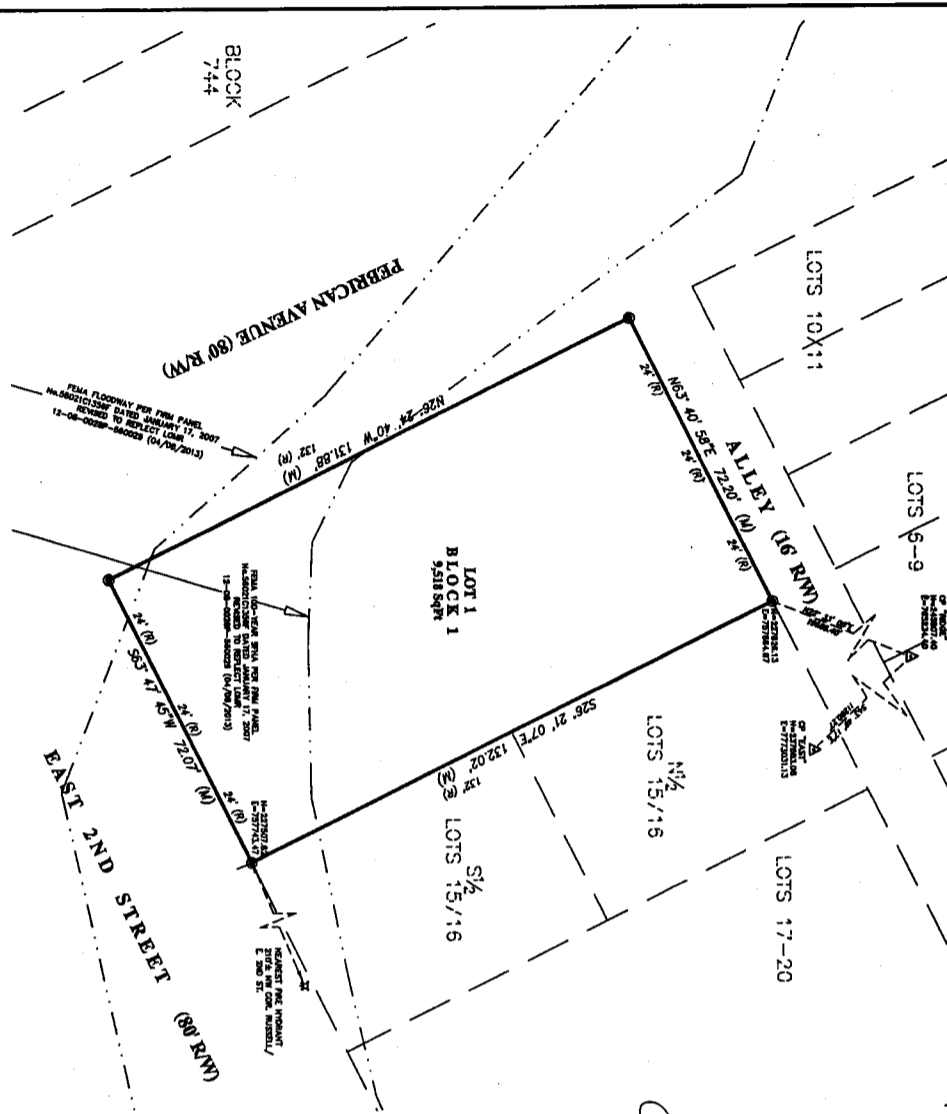
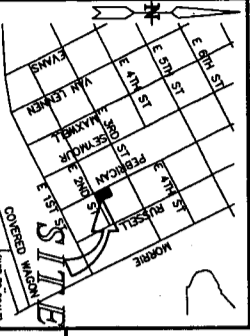


DOMESTIC WATER & SANITARY SEWER PROVIDED BY CITY OF CHEYENNE HOPU - FIRE PROTECTION TO BE PROVIDED BY CHEYENNE FIRE & RESCUE .
 THE SURFACE ESTATE OF THE LAND TO BE SUBDIVIDED IS SUBJECT TO FULL AND EFFECTIVE DEVELOPMENT OF THE MINERAL ESTATE .



VACATION STATEMENT

IT IS THE INTENT OF THIS REPORT TO VACATE ALL OF LOTS 12, 13 AND 14, BLOCK 743, SOUTH CHEYENNE, CITY OF CHEYENNE, LARAMIE COUNTY, WYOMING. ALL EXISTING EASEMENTS ARE PROPOSED TO REMAIN UNLESS NOTED OTHERWISE.



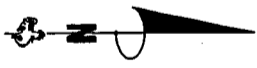
VICINITY MAP

801977
 The State of Wyoming }
 County of Laramie } SS
 The following instrument was filed for record
 at 12:25 PM on the 21st day of February,
 A.D. 2021, and duly recorded in
 Book 12, Page 17.
 Notary Public, Laramie County, Wyoming
 by *Debra L. De*
 County Clerk
 by *Debra L. De*
 County Clerk

DEDICATION

KNOW ALL PERSONS BY THESE PRESENTS THAT WALKER CONTRACTING INC, owner in fee simple of All of Lots 12, 13 and 14, Block 743, South Cheyenne, City of Cheyenne, Laramie County, Wyoming, Has caused the same to be surveyed, vacated and re-platted to be known as SOUTH CHEYENNE SECOND FILING and do hereby declare the subdivision of said land as it appears on this plat, to be their free act and deed and in accordance with their desires, and do hereby grant the easements for the purposes indicated.

Walker Contracting Inc
 by *Debra L. De*
 Doug Walker, as Owner



LEGEND
 (S) FOUND 2" ALUMINUM CAP STAMPED "L.S. 3047"
 (M) DENOTES MEASURED DATA THIS SURVEY
 (R) DENOTES RECORDED DATA

NOTES

1. BASIS OF BEARINGS - WYOMING STATE PLANE COORDINATES, EAST ZONE, NAD83-2011, US SURVEY FEET, GRID DISTANCES. MERIDIAN CONVERSION FACTOR = 0.9999984156.
2. A PORTION OF THE SUBJECT PROPERTY FALLS WITHIN COVERED PERMITTING DISTRICT 17, 2007.
3. ALL UNAPPORTIONED LOT CORNER ANGLE POINTS AND POINTS OF CHANGING TO BE MONUMENTED WITH 1/2" ALUMINUM CAP STAMPED "SS P.L.S. 3810" ON 1/2" x 1/2" REBAR.
4. EXISTING DOMESTIC WATER AND SANITARY SEWER SERVICES WILL CONTINUE TO BE PROVIDED BY CITY OF CHEYENNE BOARD OF PUBLIC UTILITIES (BOPU).
5. THE PURPOSE OF THIS ADMINISTRATIVE REPLAT IS TO COMBINE THE EXISTING (3) PLATTED LOTS FOR A SINGLE RESIDENTIAL USE.

ACKNOWLEDGEMENT

The foregoing instrument was acknowledged before me this 21st day of February, 2021 by Doug Walker, as Owner, for Walker Contracting Inc, County of Laramie }
 SS

My Commission Expires: April 30, 2022
 Notary Public, Laramie County, Wyoming

CERTIFICATE OF SURVEYOR

I, Jeffrey B. Jones, a Professional Land Surveyor in the State of Wyoming, for and on behalf of Steel Surveying & Development Specialists, LLC hereby state, to the best of my knowledge, information and belief, that this map was prepared from field notes taken during an actual survey made by me or under my direct supervision; and that this map correctly shows the results of said survey and that the monuments found or set are as shown.



Jeffrey B. Jones, A Professional Land Surveyor in the State of Wyoming, for and on behalf of Steel Surveying & Development Specialists, LLC hereby state, to the best of my knowledge, information and belief, that this map was prepared from field notes taken during an actual survey made by me or under my direct supervision; and that this map correctly shows the results of said survey and that the monuments found or set are as shown.

SOUTH CHEYENNE SECOND FILING

AN ADMINISTRATIVE REPLAT OF ALL OF LOTS 12, 13 AND 14, BLOCK 743, SOUTH CHEYENNE, CITY OF CHEYENNE, LARAMIE COUNTY, WYOMING.
 PREPARED DECEMBER, 2020

APPROVALS
 Approved by the Planning & Development Director this 21st day of February, 2021.
Debra L. De
 Planning & Development Director, City of Cheyenne, Wyoming
 Approved by the City Engineer this 21st day of February, 2021.
Debra L. De
 City Engineer, City of Cheyenne, Wyoming

FILING RECORD

RECORDED 2/12/2021 AT 8:42 AM BY COUNTY CLERK
 DEBRA L. DE, CLERK OF LARAMIE COUNTY, WY 82001
 REC'D #: 8021377

REVISED: 12/23/2020
 20200323 ZONE CHANGE DWG
 © COPYRIGHT 2020 STEEL SURVEYING SERVICES, LLC ALL RIGHTS RESERVED

STEEL SURVEYING SERVICES, LLC
 PROFESSIONAL LAND SURVEYORS
 PLANNING & DEVELOPMENT SPECIALISTS
 1108 WEST 18th ST. CHEYENNE, WY. 82001 • (307) 634-7879
 756 GILCHRIST ST. WHEATLAND, WY. 82201 • (307) 523-9788
 www.steelsurvey.com • info@steelsurvey.com