

UNPLATTED

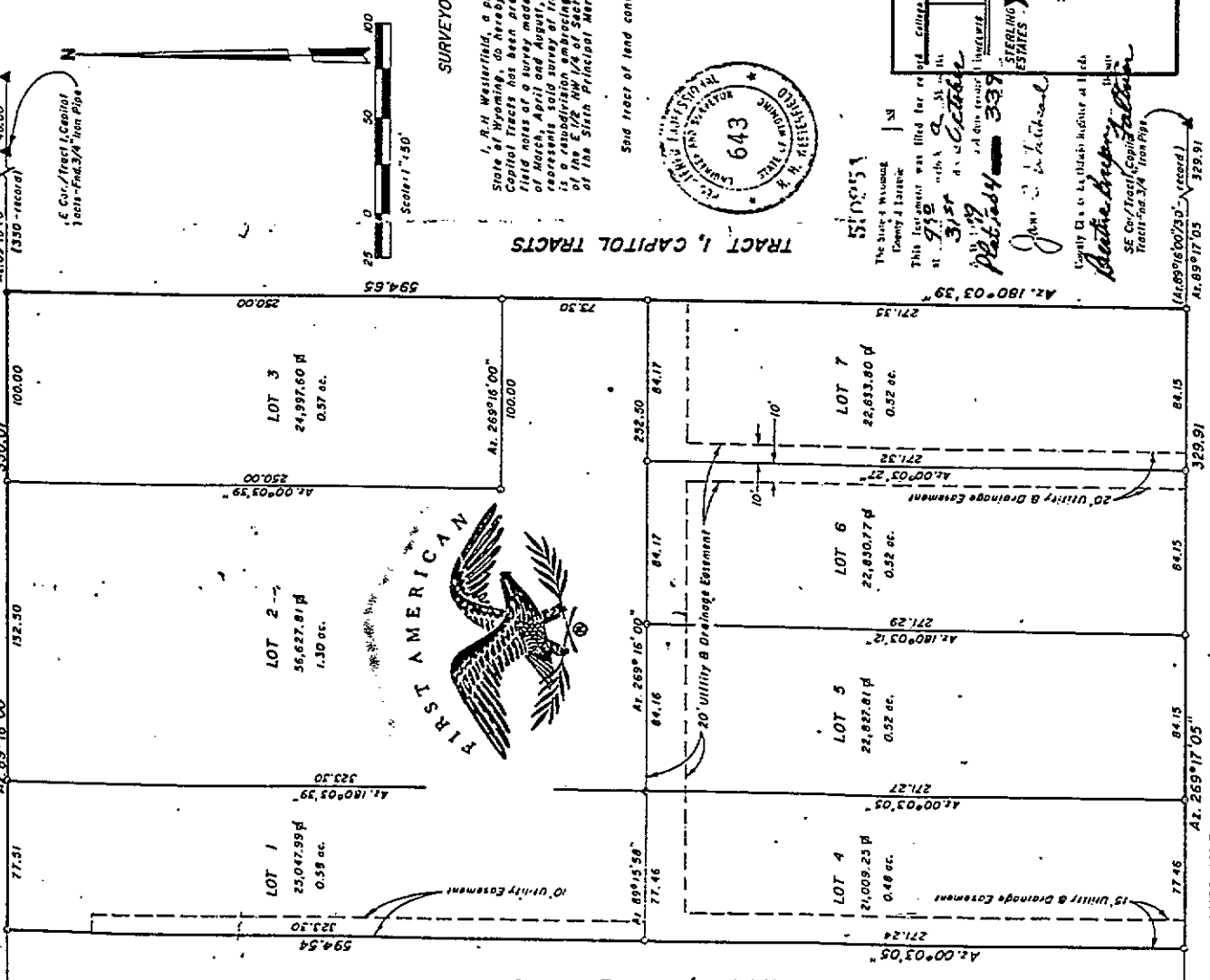
N 1/4 C. Sec 10, T. 13 N., R. 66 W.

COLLEGE

(80' R/W)

DRIVE

330.01



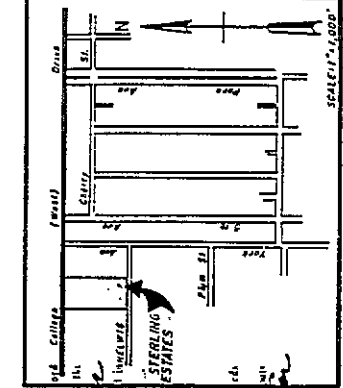
SURVEYOR'S CERTIFICATE

I, R.H. Westerfield, a professional Land Surveyor registered in the State of Wyoming, do hereby certify that this replat of Tract 2, Capitol Tracts has been prepared from recorded documents and the field notes of a survey made under my supervision during the months of March, April and August, 1979 and that it correctly and accurately represents said survey of tract as shown hereon and that said replat is a resubdivision embracing all of Tract 2, Capitol Tracts, a portion of the Sixth Principal Meridian, Township 13 North, Range 66 West of the Sixth Principal Meridian, Laramie County, Wyoming.

Said tract of land contains 4.49 acres, more or less.



R.H. Westerfield
R.H. Westerfield
Wyoming P.E. and L.S. No. 643



VICINITY MAP

DEDICATION

Know all persons by these presents:

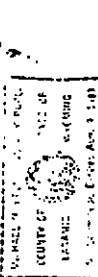
That John R. and Betty L. Vi gil, Eddy H. and Cecelia J. Schult, and Glenn A. Sterling, owners in fee simple and undivided in replat of Tract 2, Capitol Tracts, do hereby dedicate this replat of land and improvements thereon on this replat, to be their free and voluntary act and deed and in accordance with their desires.

John R. Vi gil
Betty L. Vi gil
Eddy H. Schult
Cecelia J. Schult
Glenn A. Sterling

ACKNOWLEDGMENT

State of Wyoming
County of Laramie

The dedication instrument was acknowledged before me by John R. and Betty L. Vi gil, Eddy H. and Cecelia J. Schult, and Glenn A. Sterling this 21st day of August, 1979.



Notary Public
My commission expires: August 9, 1982

APPROVALS

Approved by the Cheyenne-Laramie County Regional Planning Comm: on the 17th day of September, 1979.

Attest: *[Signature]*
Chairman

Approved by the Laramie County Board of Commissioners of Laramie County, Wyoming the 17th day of September, 1979.

Attest: *[Signature]*
Chairman

Approved by the City Council of the City of Cheyenne, Wyoming on the 17th day of September, 1979.

Attest: *[Signature]*
Mayor

STERLING ESTATES
LOTS 1, 2, 3, 4, 5, 6, & 7,
A REPLAT OF
TRACT 2, CAPITOL TRACTS

A PORTION OF THE E 1/2 NW 1/4
SECTION 18, T. 13 N., R. 66 W., 6th P.M.,
LARAMIE COUNTY, WYOMING.

WESTERFIELD ENGINEERING
P.O. BOX 2301
CHEYENNE WYOMING
PHONE (307) 632-9943

JOB NO. 79-07-201 DATE: AUG 21 1979