

**Notes:**

- The survey was made by the Surveyor in person or by a duly qualified person under his supervision.
- All corners are marked with iron pins or other permanent monuments.
- All distances are in feet and inches.
- The bearings are true bearings.
- The area of each lot is in acres and square feet.
- The area of the block is in acres and square feet.
- The area of the tract is in acres and square feet.
- The area of the section is in acres and square feet.
- The area of the township is in acres and square feet.
- The area of the range is in acres and square feet.

**Arbitration:**

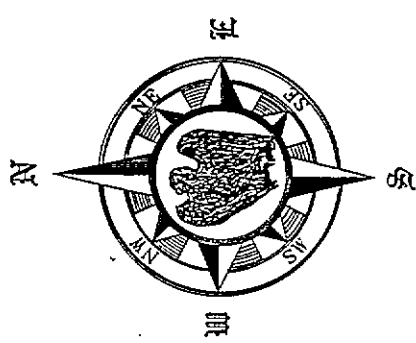
Where all the parties to a controversy have agreed in writing to submit the same to arbitration, the arbitrator's award shall be final and binding on all the parties.

**Acknowledgement:**

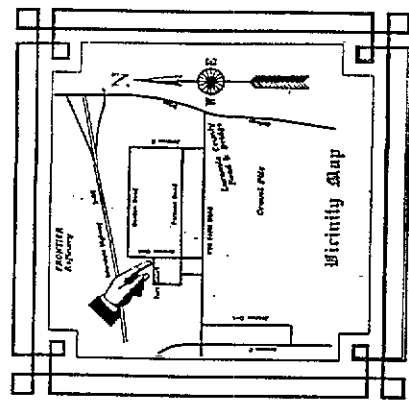
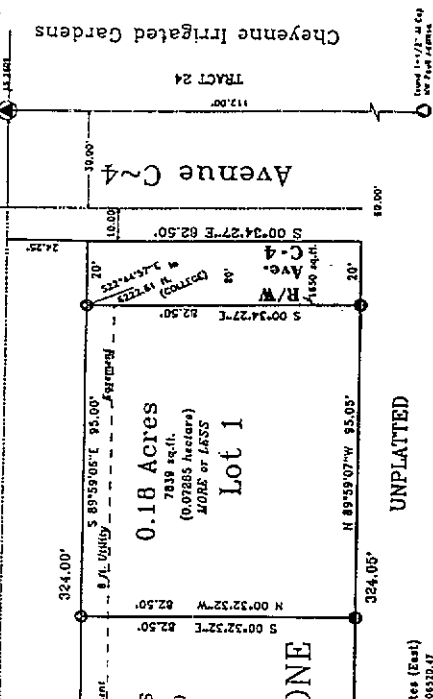
I, the undersigned, do hereby certify that this plat of Block One, containing Lots 1, 2, and 3, is a true and correct copy of the original plat on file in the office of the Surveyor.

**Certificate of Surveyor:**

I, the undersigned, do hereby certify that this plat of Block One, containing Lots 1, 2, and 3, is a true and correct copy of the original plat on file in the office of the Surveyor.



**Turk Court**



**Conversions**  
From International System of Units (SI) to American Standard  
One Foot = 0.3048 Meter  
One Meter = 3.2808 Feet

**Scale:**  
1 inch = 20 feet  
1 centimeter = 0.3937 inches

**The Final Plat**  
**of**  
**STONELEAF**  
**SUBDIVISION**  
A Parcel of Land Situate in the N 1/2 SE 1/4 SW 1/4 of Section 4 in T.13 N. R.66 W. of the Sixth Principal Meridian in Laramie County, Wyoming

**Land Description:**

Parcel of land, situate in the N 1/2 of the SE 1/4 of Section 4 in T.13 N. R.66 W. of the 6th P.M. in Laramie County, Wyoming, being more particularly shown and described as follows, to wit:  
Beginning at a Point 100.00 feet easterly of the Northerly line of said SE 1/4 SW 1/4 of Section 4 in T.13 N. R.66 W. of the 6th P.M. in Laramie County, Wyoming, and running easterly 100.00 feet to a point in the line of said SE 1/4 SW 1/4 of Section 4 in T.13 N. R.66 W. of the 6th P.M. in Laramie County, Wyoming, and running southerly 100.00 feet to a point in the line of said SE 1/4 SW 1/4 of Section 4 in T.13 N. R.66 W. of the 6th P.M. in Laramie County, Wyoming, and running westerly 100.00 feet to the point of beginning.

Corner	Description	City Coordinates (North)	City Coordinates (East)
NE Lot 1	3/8" x 32' rebar with 1-1/2" Aluminum Cap	Y65370.34	X405320.17
SE Lot 1	3/8" x 32' rebar with 1-1/2" Aluminum Cap	Y65384.24	X405314.49
NW Lot 3	3/8" x 32' rebar with 1-1/2" Aluminum Cap	Y65470.97	X405317.251
SW Lot 3	3/8" x 32' rebar with 1-1/2" Aluminum Cap	Y65386.474	X405445.47
TL	3/8" x 32' rebar with 1-1/2" Aluminum Cap	Y65470.97	X405317.251
TR	3/8" x 32' rebar with 1-1/2" Aluminum Cap	Y65386.474	X405445.47
BL	3/8" x 32' rebar with 1-1/2" Aluminum Cap	Y65370.34	X405320.17
BR	3/8" x 32' rebar with 1-1/2" Aluminum Cap	Y65384.24	X405314.49

**Approvals:**

Approved by the Cheyenne - Laramie County Regional Planning Commission on this 12th day of the month of February, 2009.

Approved by the City Council of the City of Cheyenne on this 27th day of the month of February, 2009.

Approved by the Laramie County Board of County Commissioners on this 4th day of the month of February, 2009.

**FIRE PROTECTION BY FIRE DISTRICT NUMBER ONE**  
**WATER AND SEWER SERVICE BY SOUTH CHEYENNE WATER AND SEWER DISTRICT**

Errata Printing & Mapping Co.  
1127 Terry Ranch Road  
Cheyenne, Wyoming 82007  
Phone: (307) 634-9310 Fax: (307) 775-3411