

NORTH, RANGE 67 WEST OF THE 6TH P.M., LARAMIE COUNTY, WYOMING, BEING MORE PARTICULARLY DESCRIBED AS FOLLOWS:

BEGINNING AT A POINT WHICH IS LOCATED S38°32'40"E A DISTANCE OF 211.14 FEET FROM THE NW CORNER OF SECTION 21, TOWNSHIP 12 NORTH, RANGE 67 WEST; THENCE S60°04'20"E A DISTANCE OF 681.86 FEET TO A POINT; THENCE N02°54'00"E A DISTANCE OF 1384.84 FEET TO A POINT; THENCE N87°12'30"E A DISTANCE OF 1523.80 FEET TO A POINT; THENCE N00°00'00"E A DISTANCE OF 441.89 FEET TO A POINT; THENCE N00°00'00"W A DISTANCE OF 180.00 FEET TO A POINT; THENCE S00°00'00"W A DISTANCE OF 293.33 FEET TO A POINT; THENCE S11°09'00"E A DISTANCE OF 92.42 FEET TO A POINT; THENCE N82°29'44"W A DISTANCE OF 1466.54 FEET TO A POINT ON THE WEST RIGHT OF WAY BOUNDARY OF I-25; THENCE S00°57'00"W ALONG THE WEST RIGHT OF WAY BOUNDARY OF I-25, A DISTANCE OF 603.86 FEET TO A POINT; THENCE S00°58'31"W, A DISTANCE OF 631.55 FEET TO THE POINT OF BEGINNING, WITH SAID TRACT CONTAINING 27,192 ACRES, MORE OR LESS.

COUNTY OF LARAMIE, S.S. STATE OF WYOMING THE FOREGOING DECLARATION OF "TERRY BISON RANCH" WAS ACKNOWLEDGED BEFORE ME BY JANCIE C. THIEL & RONALD A. THIEL THIS 21<sup>ST</sup> DAY OF JULY, 1993. IN WITNESS WHEREOF, I HAVE HEREUNTO SET MY HAND AND AFFIXED THE SEAL OF MY OFFICE THE DAY AND YEAR HEREIN WRITTEN ABOVE.



*[Signature]*  
NOTARY PUBLIC

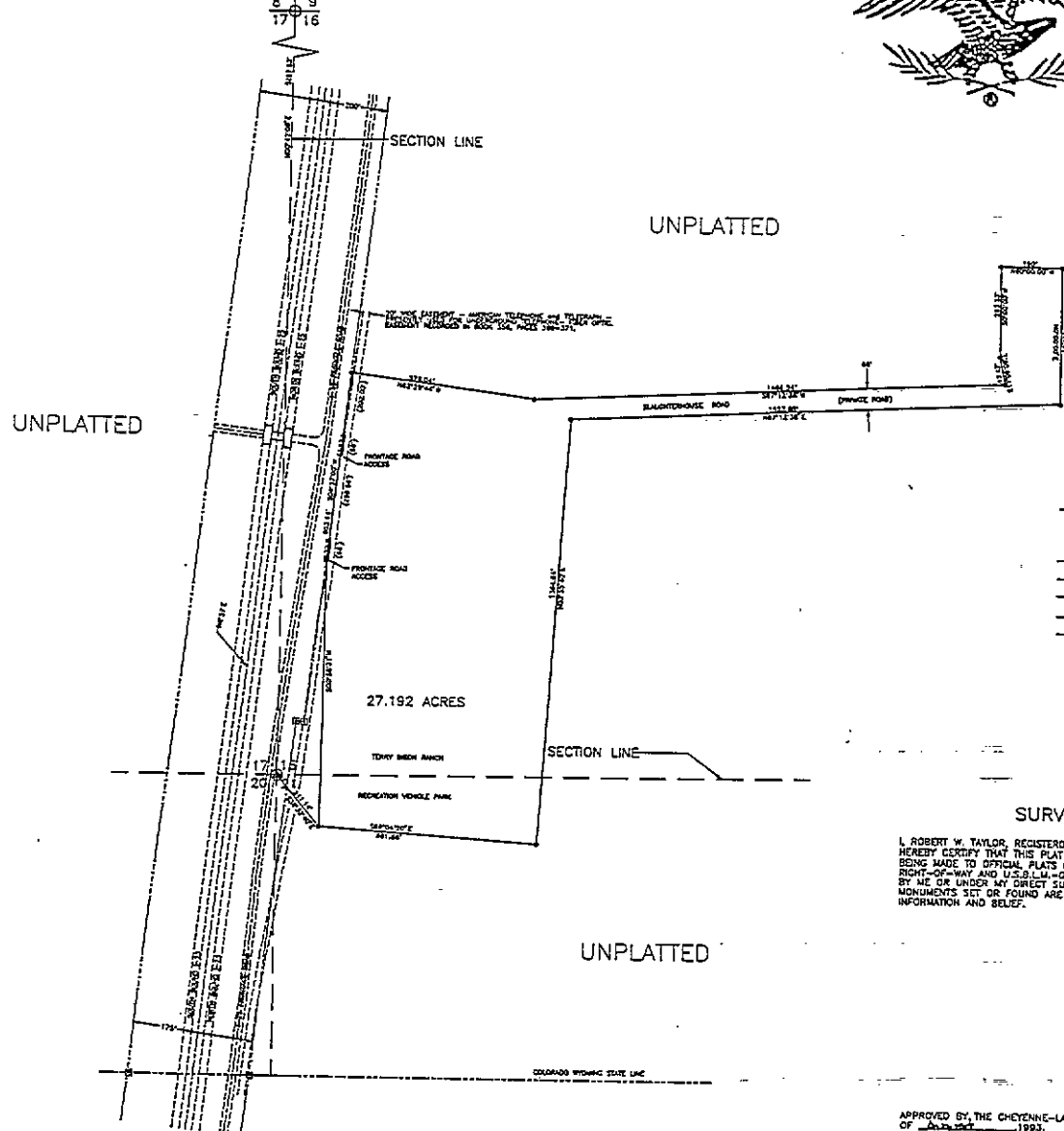
MY COMMISSION EXPIRES ON 11/22/96

HAVE CAUSED THE SAME TO BE SURVEYED, PLATTED AND KNOWN AS THE "TERRY BISON RANCH". DO HEREBY DECLARE THE SUBDIVISION OF SAID LANDS AS IT APPEARS ON THIS PLAT, TO BE THEIR FREE ACT AND DEED IN ACCORDANCE WITH THEIR DESIRES.

*Jancie C. Thiel* and *Ronald A. Thiel*  
JANCIE C. THIEL AND RONALD A. THIEL



SCALE: 1" = 200'  
0' 100' 200' 300' 400'



- LEGEND**
- ⊙ WYOMING DOT R.O.W. MON.
  - FRONTAGE ROAD CENTER LINE
  - 2" DIAMETER ALUMINUM CAP MARKED PLS 3891 SET ON 30' LONG STEEL PIPE
  - STATE LINE
  - SECTION LINE
  - SUBDIVISION BOUNDARY
  - HIGHWAY LANES
  - HIGHWAY R.O.W.
  - ⊙ SECTION CORNER COMMON TO 16, 17, 20 & 21, T12N, R67W MONUMENTED WITH 2"X30" STEEL PIPE WITH ALUMINUM CAP, P.L.S. #3891.
  - ⊕ FOUND STONE AS REFERENCED ON WYOMING DEPARTMENT OF TRANSPORTATION RIGHT-OF-WAY PLATS AT THE NW CORNER OF SECTION 16.
  - FRONTAGE ROAD ACCESS

**SURVEYORS CERTIFICATE**

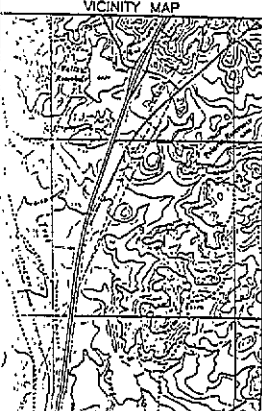
I, ROBERT W. TAYLOR, REGISTERED PROFESSIONAL LAND SURVEYOR IN THE STATE OF WYOMING, HEREBY CERTIFY THAT THIS PLAT OF "TERRY BISON RANCH" WAS PREPARED WITH REFERENCE BEING MADE TO OFFICIAL PLATS OF RECORD (WYOMING DEPARTMENT OF TRANSPORTATION RIGHT-OF-WAY AND U.S. B.L.M.-G.L.O.) AND FROM NOTES OF A FIELD SURVEY CONDUCTED BY ME OR UNDER MY DIRECT SUPERVISION DURING THE MONTH OF JUNE, 1993, THAT THE MONUMENTS SET OR FOUND ARE AS SHOWN HEREON TO THE BEST OF MY KNOWLEDGE, INFORMATION AND BELIEF.



**APPROVALS**

APPROVED BY THE CHEYENNE-LARAMIE COUNTY REGIONAL PLANNING COMMISSION THIS 12<sup>TH</sup> DAY OF July, 1993.  
*[Signature]*  
DEVELOPMENT DIRECTOR

APPROVED BY THE BOARD OF COUNTY COMMISSIONERS OF LARAMIE COUNTY, WYOMING, THIS 12<sup>TH</sup> DAY OF July, 1993.  
*[Signature]* ATTEST *[Signature]*  
CHAIRMAN COUNTY CLERK



- NO PUBLIC MAINTENANCE OF PRIVATE ROADS
- NO ORGANIZED FIRE PROTECTION
- NO PUBLIC DOMESTIC WATER SOURCE
- NO PUBLIC WASTEWATER SYSTEM

NOTE: ALL BEARINGS SHOWN HEREON ARE BASED ON THE SURVEY CENTER LINE BEARING OF I-25 AS IT PASSES THROUGH SECTION 16, T12N, R67W (NEPTE). AS SHOWN ON WYOMING DEPARTMENT OF TRANSPORTATION PLANS, PROJECT NO. 1-25-(24)0, WITH SURVEY TIES BEING MADE TO 8 WOOD R-O-W MARKERS TO VERIFY POSITION AND CONGRUENCY OF BEARING BASE.

AZIMUTH	FILING RECORD
AZ=00°00'00" N BRG=NORTH	
AZ=270°00'00" BRG=WEST	

FINAL PLAT OF **TERRY BISON RANCH**

A PORTION OF SECTION 16 & 21, T12N, R67W LARAMIE COUNTY, WYOMING