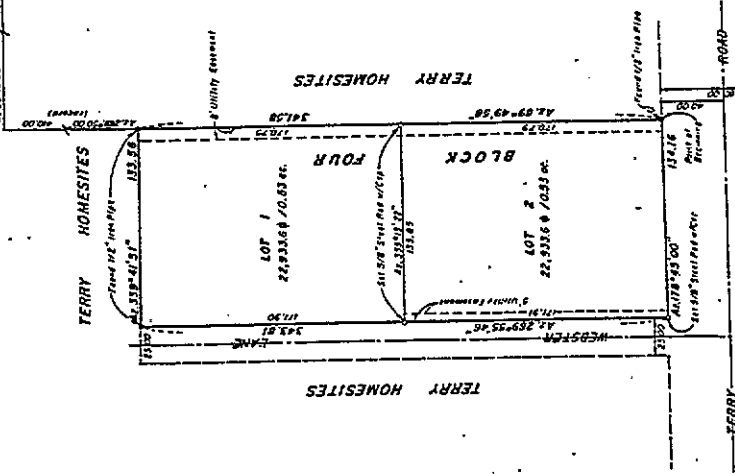




REGISTERED BY THE STATE OF WYOMING, 1917, U.S. PAT. NO. 1,000,000



**SURVEYOR'S CERTIFICATE**

I, R. M. Westering, a professional land surveyor, registered in the State of Wyoming, do hereby certify that the above was lawfully surveyed and the plat thereon duly recorded in the office of the County Clerk of Laramie County, Wyoming, on the 17th day of August, 1939, and that I correctly represented and surveyed the same in accordance with the laws of the State of Wyoming, and that the same comply with the requirements of a subdivision of a part of the NE 1/4 Section 17, Township 13 North, Range 66 West, of the 3rd Principal Meridian, Laramie County, Wyoming, and being more particularly described as follows:

Containing the west right-of-way line of Terry Road to bear an azimuth of 174° 45' 00" and a distance of 1033 feet to the Point of Beginning, and with all lengths contained in the plat thereon.

Beginning at point on the west right-of-way line of Terry Road from the southwest corner of Block 4, Terry Homesites, an azimuth of 174° 45' 00" and a distance of 1033 feet to a distance of 1033 feet, thence on an azimuth of 174° 45' 00" along the west right-of-way of Terry Road a distance of 132.16 feet to a point which I have designated as the Point of Beginning; thence on an azimuth of 174° 45' 00" along the west right-of-way of Terry Road a distance of 132.16 feet to a point which I have designated as the Point of Beginning; thence on an azimuth of 174° 45' 00" along the west right-of-way of Terry Road a distance of 132.16 feet to a point which I have designated as the Point of Beginning; thence on an azimuth of 174° 45' 00" along the west right-of-way of Terry Road a distance of 132.16 feet to a point which I have designated as the Point of Beginning; thence on an azimuth of 174° 45' 00" along the west right-of-way of Terry Road a distance of 132.16 feet to a point which I have designated as the Point of Beginning.

Said tract of one combine 1033 acres, more or less.



*R. M. Westering*  
R. M. Westering  
Wyoming, P.E. and L.S. No. 643

**APPROVALS**

Approved by the Cheyenne-Laramie County Regional Planning Commission on the 17th day of August, 1939.

Attest:  
Secretary  
Cheyenne

Approved by the Laramie County Board of Commissioners of Laramie County, Wyoming on the 17th day of August, 1939.

Attest:  
County Clerk  
Cheyenne

**DEDICATION**

Know all parties by these presents: That Mary G. and Beverly M. Roper, parties in the title of all the land embraced in the report of a portion of Block 4, Terry Homesites, does hereby declare, as report of the above described land, as appears on this report to be their intended voluntary act and deed and in accordance with their intent,

Mary G. Roper  
Beverly M. Roper

**ACKNOWLEDGMENT**

This dedication instrument was acknowledged before me by Mary G. and Beverly M. Roper on the 17th day of August, 1939.

Notary Public

My commission expires

**TERRY HOMESITES**

14  
1939  
336

*Beth Ann Roper*

NOTE: NO PUBLIC MAINTENANCE OF WESTER LANE

**TERRY HOMESITES, THIRD FILING**

A PART OF THE NE 1/4 SW 1/4 SECTION 17, T.13 N., R.66 W., 6th P.M., LARAMIE COUNTY, WYOMING.

**WESTERFIELD ENGINEERING**  
CIVIL ENGINEERS  
PO BOX 10318  
CHEYENNE, WYOMING

JANUARY 15, 1941 DATE: AUGUST 1, 1939 SHEET NO. 111-M.P.