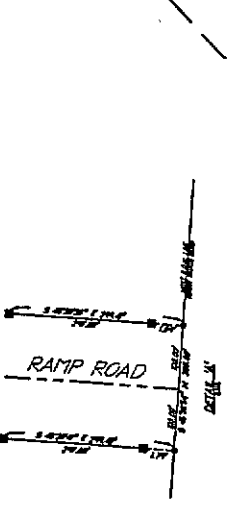
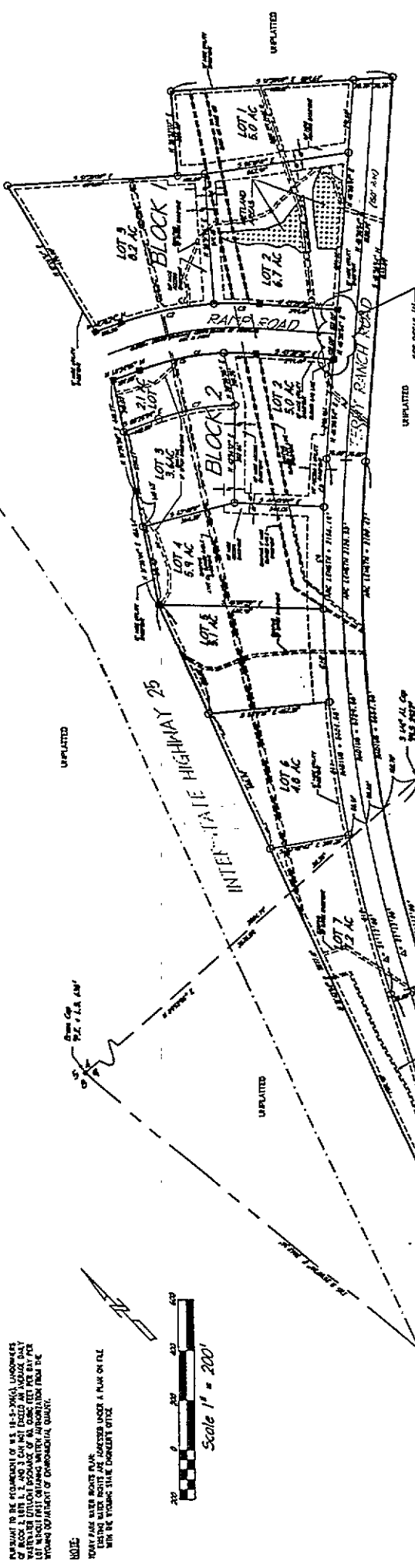
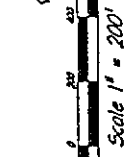


TERRY PARK
A SUBDIVISION OF A PORTION OF
SECTIONS 4 & 9, TOWNSHIP 12 NORTH,
RANGE 67 WEST, 6TH P.M.
LARARIE COUNTY, WYOMING



NOTE:
TERRY PARK SHALL BE BUILT IN ACCORDANCE WITH THE WYOMING SUBDIVISION ACT AND THE WYOMING STATE ENGINEERING ACT.



APPROVED BY THE BOARD OF COUNTY COMMISSIONERS OF THE COUNTY OF LARAMIE, WYOMING
DATE: 11/1/98

APPROVED BY THE BOARD OF COUNTY COMMISSIONERS OF THE COUNTY OF LARAMIE, WYOMING
DATE: 11/1/98

APPROVED BY THE BOARD OF COUNTY COMMISSIONERS OF THE COUNTY OF LARAMIE, WYOMING
DATE: 11/1/98

APPROVED BY THE BOARD OF COUNTY COMMISSIONERS OF THE COUNTY OF LARAMIE, WYOMING
DATE: 11/1/98

APPROVED BY THE BOARD OF COUNTY COMMISSIONERS OF THE COUNTY OF LARAMIE, WYOMING
DATE: 11/1/98

LEGAL DESCRIPTION
A portion of the land described in portions of Sections 4 and 9 of Township 12 North, Range 67 West, 6th P.M., Lararrie County, Wyoming, and being more particularly described as follows:

SURVEYOR'S STATEMENT
I, JAMES A. GARDNER, a Registered Professional Land Surveyor in the State of Wyoming, having been duly sworn to the honor and integrity of my office, do hereby certify that the foregoing plat is a true and correct representation of the land described therein, and that the same has been surveyed and located in accordance with the laws of the State of Wyoming.

NOTE:
NO PUBLIC MAINTENANCE OF PRIVATE ROADS
NO PUBLIC DOMESTIC SEWER SYSTEMS ARE PROPOSED
NO PUBLIC DOMESTIC WATER SYSTEMS ARE PROPOSED
SUBDIVISION LOCATED IN COUNTY FIRE DISTRICT NO. 1

FILED RECORD
LARAMIE COUNTY, WYOMING
RECORDED 11/1/98

ASIMUTH
AZIMUTH