

**DEDICATION**

STATE OF WYOMING, County of Laramie, ss. I, *[Signature]*, Clerk of the County, do hereby certify that the following is a true and correct copy of the original as the same appears in the office of the Clerk of the County.

Witness my hand and seal of office this 11th day of April, 2009.

*[Signature]*  
Clerk of the County

**ACKNOWLEDGEMENTS**

STATE OF WYOMING }  
COUNTY OF LARAMIE } ss.  
I, *[Signature]*, Surveyor, do hereby certify that the following is a true and correct copy of the original as the same appears in the office of the Surveyor.



STATE OF WYOMING }  
COUNTY OF LARAMIE } ss.  
I, *[Signature]*, Commissioner of the State Lands Department, do hereby certify that the following is a true and correct copy of the original as the same appears in the office of the Commissioner of the State Lands Department.



STATE OF WYOMING }  
COUNTY OF LARAMIE } ss.  
I, *[Signature]*, Clerk of the District Court, do hereby certify that the following is a true and correct copy of the original as the same appears in the office of the Clerk of the District Court.

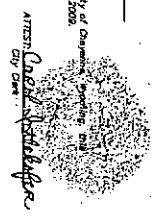


**APPROVALS**

Approved by the City of Cheyenne Planning Commission this 11th day of April, 2009.

*[Signature]*  
Development Director

Approved by the City Council of the City of Cheyenne this 11th day of April, 2009.



*[Signature]*  
City Clerk

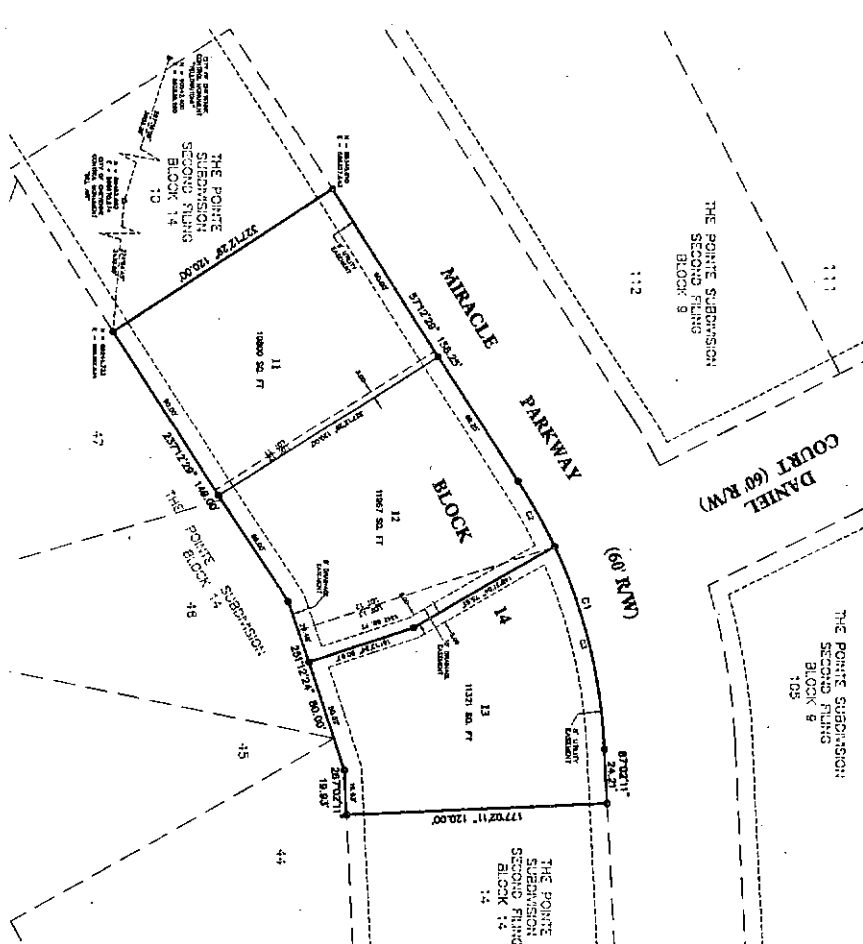
**CERTIFICATE OF SURVEYOR**

I, John A. Steel, Registered Professional Land Surveyor in the State of Wyoming, do hereby certify that the following is a true and correct copy of the original as the same appears in the office of the Surveyor.

**STEEL POINTS POWER PLANT**  
A REPLAY OF LOTS 11, 12 & 13, BLOCK 14, THE POINT SECOND FILING, LARAMIE COUNTY, WYOMING.

PREPARED MAY 2009

**STEEL SURVEYING SERVICES, LLC**  
PROFESSIONAL LAND SURVEYORS  
1102 WEST 14TH STREET, R.O. BOX 8078  
LARAMIE, WYOMING 82002



**VACATION STATEMENT**

IT IS THE INTENT OF THIS REPLAY TO VACATE THE LOT LINES AND THE EXISTING 100 FOOT EASEMENT ON THE WEST LINE OF SAID LOT 11, BLOCK 14, THE POINT SECOND FILING.

**LEGEND**

- 5/16" x 3/8" UPR NAIL WITH 1/4" ALUMINUM CAP
- 5/16" x 3/8" UPR NAIL WITH 1/4" ALUMINUM CAP
- △ CITY OF CHEYENNE CORNER MARKERS

**NOTES**

- 1) BASE OF CURBLINE - EXTENDING FROM CITY OF CHEYENNE CORNER MARKERS TO CENTERLINE AND 1/4" DIA.
- 2) REAR SET PROPERTY BOUNDARY LINE TO BE SET AT 100' FROM THE CENTERLINE OF THE DRAINAGE DITCH ON JANUARY 12, 2009.

**RECORDING RECORD**

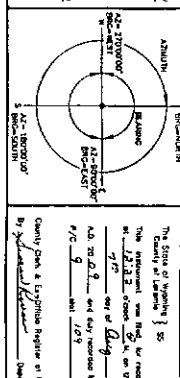
RECORDED IN THE DISTRICT CLERK'S OFFICE OF LARAMIE COUNTY, WYOMING, ON THIS 11th DAY OF APRIL, 2009.

**FILING RECORD**

FILED IN THE DISTRICT CLERK'S OFFICE OF LARAMIE COUNTY, WYOMING, ON THIS 11th DAY OF APRIL, 2009.

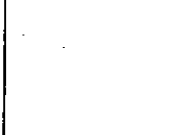


**VICINITY MAP**



**AZIMUTH**

Table with 4 columns: Station, Scribe, Angle, Distance. Includes a curve table below.



**STEEL SURVEYING SERVICES, LLC**  
PROFESSIONAL LAND SURVEYORS  
1102 WEST 14TH STREET, R.O. BOX 8078  
LARAMIE, WYOMING 82002

# SUBDIVISION SETUP FORM



Subdivision Proper Name           POINTE FOURTH FILING          

Received from           STEIL SURVEYING          

W C BUILDERS LLC

Grantor           MICHAEL T FULLMER, JEFFCO CONSTRUCTION INC.           Document Date           07/27/2009          

Grantee           IN RE POINTE FOURTH FILING          

Legal Description           L11-13 BL14 POINTE 02F          

## SUBDIVISION INFORMATION

Short Alpha Name           POINTE 04F           Number           3110          

Block Name           BLOCK           Lot Name           LOT          

Replats Previous Platting           Y/N           Defunct Subdivision           Y/N          

Covenants Book/Page                                    Old Hard Copy Book/Number           COMP          

## ABSTRACTING INFORMATION

For suffix 40-69 (Existing Parcels Affected)

TWN/SUBD	RNG/BLOCK	BEGIN SEC/LOT	END SEC/LOT	RV SW
<u>          2950          </u>	<u>          14          </u>	<u>          11          </u>	<u>          13          </u>	<u>          R          </u>

For suffix 70-99 (New Parcels Created)

BLOCK #	BEGIN LOT	END LOT	BLOCK #	BEGIN LOT	END LOT
<u>          3110          </u>	<u>          14          </u>	<u>          11          </u>	<u>                        </u>	<u>                        </u>	<u>                        </u>
		<u>          13          </u>			