

**ADMINISTRATIVE PLAT SETUP FORM**

Subdivision Proper Name THE POINTE REFINEMENT B  
 Received from STEIL SURVEYING  
 Grantor THE POINTE LLC Document Date 8/8/13  
 Grantee RE POINTE REF B  
 Legal Description L17,18 BL2 POINTE

**SUBDIVISION INFORMATION**

Short Alpha Name POINTE REF B Number 3238  
 Block Name BLOCK Lot Name LOT  
 Replats Previous Platting Y/N Defunct Subdivision Y/N  
 Covenants Book/Page \_\_\_\_\_ Old Hard Copy Book/Number COMP

**ABSTRACTING INFOFRMATION**

For suffix 40-69(Existing Parcels Affected)

TWN/SUBD	RING/BLOCK	BEGIN SEC/LOT	END SEC/LOT	R/V SW
2858	2	17	18	R

For suffix 70-99 (New Parcels Created)

BLOCK #	BEGIN LOT	END LOT	BLOCK #	BEGIN LOT	END LOT
3238	2	17	18		

**APPROVALS**

Approved by the City of Cheyenne Planning & Development Director this 20 day of August 2013.

*[Signature]*  
 Planning and Development Director, City of Cheyenne, Wyoming

Approved by the City of Cheyenne City Engineer this 20 day of August 2013.

*[Signature]*  
 City Engineer, City of Cheyenne, Wyoming

**DEDICATION**

KNOW ALL PERSONS BY THESE PRESENTS THAT: The Pointe LLC, a Wyoming Limited Liability Company, owner in fee simple of Lots 17 & 18, Block 2, The Pointe, City of Cheyenne, Laramie County, Wyoming.

Has caused the same to be surveyed, vacated, replatted and known as REFINEMENT "B" THE POINTE, does hereby declare the subdivision of said land as it appears on this plat, to be their free act and deed in accordance with their desires, and do hereby grant the easements for the purposes indicated hereon.

The Pointe LLC, a Wyoming Limited Liability Company

*[Signature]*  
 David L. Royer, member

**ACKNOWLEDGEMENT**

STATE OF WYOMING } SS  
 COUNTY OF LARAMIE }

On this 19 day of July 2013, before me personally appeared David L. Royer, member, The Pointe LLC, a Wyoming Limited Liability Company.

*[Signature]*  
 Notary Public, Laramie County, Wyoming

My Commission Expires: APR 20 2014



**ACKNOWLEDGEMENT**

STATE OF WYOMING } SS  
 COUNTY OF LARAMIE }

The foregoing instrument was acknowledged before me this 18 day of August 2013, by David L. Royer and Robert G. Gerlinger of the City of Cheyenne, Wyoming.

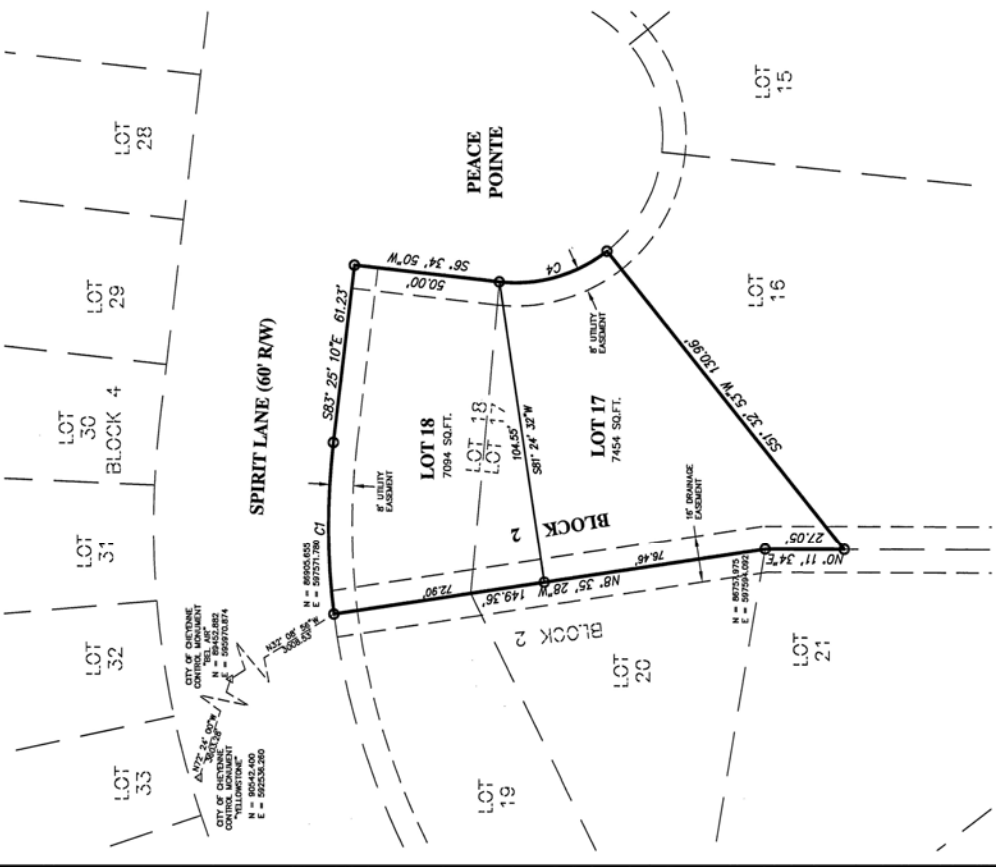
*[Signature]*  
 Notary Public, Laramie County, Wyoming

My Commission Expires: Dec 21, 2015



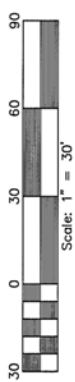
**CERTIFICATE OF SURVEYOR**

Jeffrey B. Jones, Registered Professional Land Surveyor in the State of Wyoming, for and on behalf of Steel Surveying Services, LLC, hereby states, to the best of my knowledge, information and belief, that this map was prepared from field notes taken during the course of a personal and direct survey and that the results of said survey and that the monuments found or set are as shown.



**CURVE TABLE**

CURVE #	DELTA	RADIUS	CHORD BEARING	CHORD LENGTH	ARC LENGTH
C1	13° 35' 31"	250.00'	N89° 47' 05"E	58.17'	58.31'
C4	45° 01' 58"	50.00'	S19° 56' 09"E	38.29'	39.30'



**LEGEND**

- SET 3" X 24" LUMBER BEARS WITH 1" ALUMINUM CAP STAMPED "SSS P.L.S. 5910"
- △ CITY CONTROL MONUMENTS

**NOTES**

- 1) BASIS OF BEARINGS - CITY OF CHEYENNE DATUM REFERENCED FROM CITY CONTROL MONUMENTS "YELLOWSTONE" & "BEL AIR".
- 2) SUBJECT PROPERTY DOES NOT FALL WITHIN SPECIAL 100-YEAR FLOOD HAZARD AREA AS SHOWN ON FEMA FLOOD PANEL NO. 86687G0017 DATED JANUARY 17, 2007.
- 3) ALL UN-MONUMENTED LOT CORNERS TO BE SET WITH 1" X 12" ALUMINUM CAP STAMPED "SSS PLS 5910" ON A 5/8" X 24" LONG BEAR.
- 4) WATER AND SEWER SERVICE WILL BE PROVIDED BY THE CITY OF CHEYENNE BOARD OF PUBLIC UTILITIES.
- 5) ALL UTILITY EASEMENTS LIMITED TO CHEYENNE LIGHT, FUEL AND POWER, CENTURY LINK AND/OR CASSIDY ONLY AND THEIR SUCCESSORS OR ASSIGNS.
- 6) IT IS THE INTENT OF THIS PLAT TO VACATE AND RE-ALIGN THE PREVIOUSLY PLATTED LOT LINE DIVIDING LOTS 17 & 18, BLOCK 2, THE POINTE (RECORDED MARCH 6TH, 2003)
- 7)

Reception 621529  
 The State of Wyoming } SS  
 County of Laramie }

This instrument was filed for record at 3:54 o'clock P. M. on the 18 day of August 2013, and duly returned in book 10 on page 40.

*[Signature]*  
 County Clerk & Ex-Officio Registrar of Records  
 City of Laramie, Wyoming

**FILING RECORD**



**STEEL SURVEYING SERVICES, LLC**  
 PROFESSIONAL LAND SURVEYORS

1102 W. 18th ST. CHEYENNE, WY. 82001 (307) 634-7273  
 756 GILCHRIST ST. WHEATLAND, WY. 82201 (307) 352-8789

Prepared MAY 2013