

# Surveyor's Certificate

I, Betty J. Brown, a Professional Land Surveyor registered in the State of Wyoming, hereby certify that this plat was prepared from the field notes of an actual survey made by me during the month of July, 1983, and that it correctly and accurately shows the location, extent, and boundary of the addition as shown herein to the best of my knowledge.



## Dedication

KNOW ALL MEN BY THESE PRESENTS THAT:

Carroll M. Vye and Myrna J. Vye, husband and wife; owners in fee simple of the land hereinafter described in this plat of the addition, do hereby declare the land hereinafter described to be their free, set and deed and in accordance with their desires.

Carroll M. Vye  
Myrna J. Vye

## Acknowledgment

State of Wyoming  
County of Laramie

The dedication instrument was acknowledged before me by Carroll M. Vye and Myrna J. Vye this 28th day of July, 1983, Witness my hand and official seal.

Notary Public: Michael J. ...  
My commission expires: August 7, 1985

## Approvals

Approved by the Cheyenne-Laramie County Regional Planning Commission this 28th day of July, 1983.

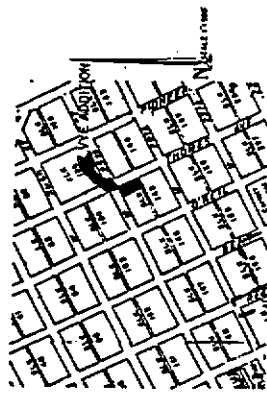
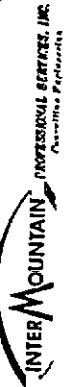
Attest: Judy Sells  
Secretary

Approved by the City Council of the City of Cheyenne, Wyoming this 28th day of August, 1983.

Attest: James ...  
City Clerk

## WYE ADDITION

A REPLAT OF  
LOT 1, BLOCK 145,  
ORIGINAL CITY OF CHEYENNE,  
WYOMING.



Vicinity Map

## Notes:

- 1.) BASIS OF ALIGNMENT - City of Cheyenne Control Network
- 2.) 611.576' Rebar and Sure-Step
- 3.) Lot will be reworked after completion of construction.

