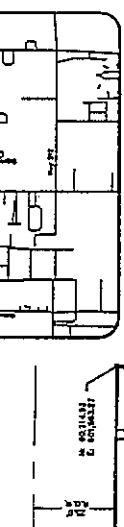
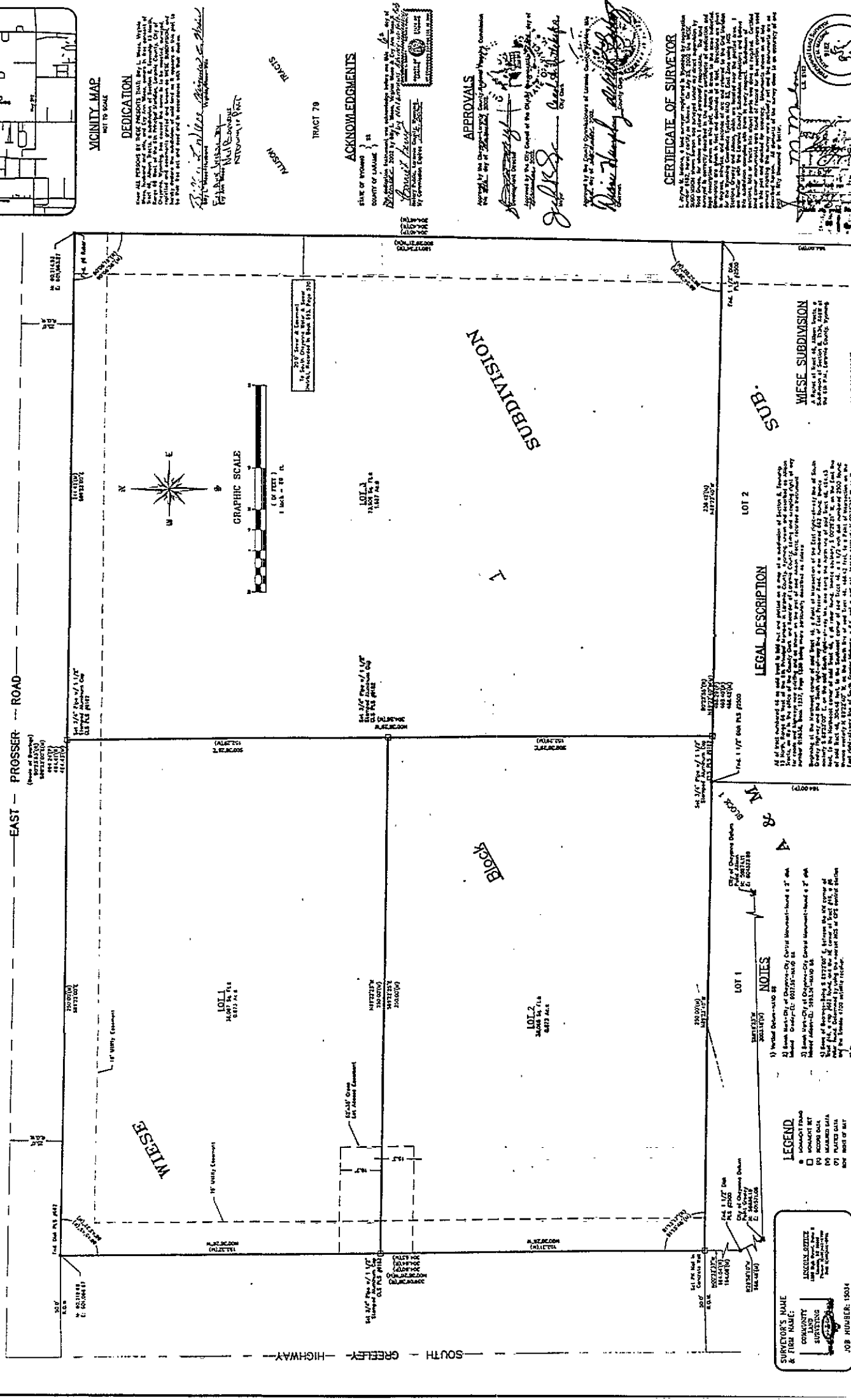


FINAL PLAT OF  
**WIESE SUBDIVISION, A REPLAT OF TRACT 46, ALLISON TRACTS,  
 A SUBDIVISION OF SECTION 8, TOWNSHIP 13 NORTH, RANGE 66 WEST, OF THE  
 6TH PRINCIPAL MERIDIAN, LARAMIE COUNTY, WYOMING**



**DEDICATION**  
 I, the undersigned, do hereby dedicate to the City of Cheyenne, Wyoming, the following described land, to be used as a public street, and the same shall be subject to the laws and ordinances of said city.

*Richard F. Wiese*  
 Registered Professional Surveyor  
 Laramie, Wyoming

**ACKNOWLEDGMENTS**  
 STATE OF WYOMING }  
 COUNTY OF LARAMIE } ss  
 I, the undersigned, do hereby acknowledge the foregoing plat as my own deed, and the same as correct and true to the best of my knowledge and belief, and I have signed the same at the City of Cheyenne, Wyoming, this 23rd day of July, 1954.

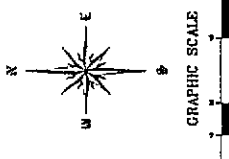
*Richard F. Wiese*  
 Registered Professional Surveyor

**APPROVALS**  
 I, the City Engineer of Cheyenne, Wyoming, do hereby approve the foregoing plat, and the same as correct and true to the best of my knowledge and belief, and I have signed the same at the City of Cheyenne, Wyoming, this 23rd day of July, 1954.

*John W. Dyer*  
 City Engineer

**CERTIFICATE OF SURVEYOR**  
 I, the undersigned, do hereby certify that the foregoing plat is a true and correct representation of the land shown thereon, and that the same has been surveyed and platted in accordance with the laws and ordinances of the State of Wyoming, and the City of Cheyenne, Wyoming, and that the same is correct and true to the best of my knowledge and belief, and I have signed the same at the City of Cheyenne, Wyoming, this 23rd day of July, 1954.

*Richard F. Wiese*  
 Registered Professional Surveyor



**SUBDIVISION**

**WIESE SUBDIVISION**  
 A REPLAT OF TRACT 46, ALLISON TRACTS, A SUBDIVISION OF SECTION 8, TOWNSHIP 13 NORTH, RANGE 66 WEST, OF THE 6TH PRINCIPAL MERIDIAN, LARAMIE COUNTY, WYOMING.

**WIESE**

**LEGAL DESCRIPTION**  
 That certain Lot 1, 3.17 Acres, more or less, as shown on the attached plat, is a portion of Section 8, Township 13 North, Range 66 West, of the 6th Principal Meridian, Laramie County, Wyoming, and is bounded on the north by the public street known as Prosper Road, on the east by the public street known as Greely Highway, on the south by the public street known as Greely Highway, and on the west by the public street known as Greely Highway.

**NOTES**  
 1) Vertical Curve - 1000 ft.  
 2) Block North of Cheyenne City, City of Cheyenne, Wyoming, bounded by East 27th Street, West 27th Street, and East 28th Street.  
 3) Block West of Cheyenne City, City of Cheyenne, Wyoming, bounded by East 27th Street, West 27th Street, and East 28th Street.  
 4) Block East of Cheyenne City, City of Cheyenne, Wyoming, bounded by East 27th Street, West 27th Street, and East 28th Street.  
 5) The portion to be surveyed by Laramie County, Wyoming.

**LEGEND**

- HOUSEHOLD TRACT
- HOUSEHOLD LOT
- HOUSEHOLD TRACT
- HOUSEHOLD LOT
- HOUSEHOLD TRACT
- HOUSEHOLD LOT

**SURVEYOR'S NAME & FIRM NAME:**  
 RICHARD F. WIESE  
 LARAMIE OFFICE  
 1405 W. 10TH STREET  
 LARAMIE, WYOMING

**JOB NUMBER:** 1504

**WIESE SUBDIVISION**  
 A REPLAT OF TRACT 46, ALLISON TRACTS, A SUBDIVISION OF SECTION 8, TOWNSHIP 13 NORTH, RANGE 66 WEST, OF THE 6TH PRINCIPAL MERIDIAN, LARAMIE COUNTY, WYOMING.

**WIESE**