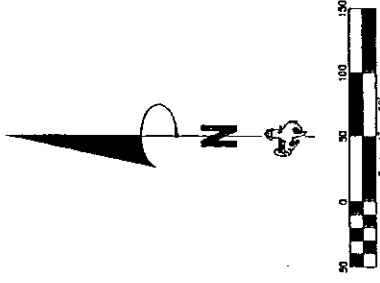


**DEDICATION**

KNOW ALL PERSONS BY THESE PRESENTS THAT COMPASSION LAND COMPANY, L.L.C., a Wyoming Limited Liability Company, owning in fee simple Lots 1, 2, 3, 4, Block 4, Campstool Addition, Third Flung, City of Cheyenne, Laramie County, Wyoming, and all other interests therein, do hereby dedicate and convey to the City of Cheyenne, Wyoming, the easements for the purposes stated herein.

COMPASSION LAND COMPANY, L.L.C., a Wyoming Limited Liability Company

John York, President



**ACKNOWLEDGEMENTS**

STATE OF WYOMING )  
 COUNTY OF LARAMIE ) SS  
 The dedication instrument was acknowledged before me this 21<sup>st</sup> day of MARCH, 2012, by John York, President, Compassion Land Company, L.L.C., a Wyoming Limited Liability Company,  
 Notary Public, Laramie County, Wyoming



My Commission Expires: 2013 05 31

**APPROVALS**

Approved by the CITY OF Cheyenne, Wyoming  
 Commission this 21<sup>st</sup> day of MARCH, 2012.  
 \_\_\_\_\_  
 Development Director

Approved by the CITY OF Cheyenne, Wyoming, Ordinance  
 No. 2012-005, passed and adopted by the City Council on the  
21<sup>st</sup> day of MARCH, 2012.  
 \_\_\_\_\_  
 City Clerk

**VACATION STATEMENT**

1) IN THE INTEREST OF THIS REPORT TO VACATE,  
 THE FOLLOWING CONTAINED WITHIN THE REPORT,  
 1) THE LOTS (NOT COURTS AND UTILITY EASEMENTS)  
 CAMPSTOOL ADDITION, THIRD FLUNG, BLOCK 4, LOT 1, 2,  
 3, 4, AND LOT 3, INDUSTRIAL COURT, THIRD FLUNG,  
 BLOCK 4, AND THE UTILITY EASEMENTS THEREON;  
 2) THE LOTS (NOT COURTS AND UTILITY EASEMENTS)  
 CAMPSTOOL ADDITION, THIRD FLUNG, BLOCK 4, LOT 1,  
 2, 3, 4, AND LOT 3, INDUSTRIAL COURT, THIRD FLUNG,  
 BLOCK 4, AND THE UTILITY EASEMENTS THEREON;  
 3) THE LOTS (NOT COURTS AND UTILITY EASEMENTS)  
 CAMPSTOOL ADDITION, THIRD FLUNG, BLOCK 4, LOT 1,  
 2, 3, 4, AND LOT 3, INDUSTRIAL COURT, THIRD FLUNG,  
 BLOCK 4, AND THE UTILITY EASEMENTS THEREON.

**CERTIFICATE OF SURVEYOR**

I, John A. Slav, Registered Professional Land Surveyor in the State of Wyoming, hereby state that the part of my professional survey of Campstool Addition, Third Flung, Block 4, Cheyenne, Wyoming, and the part of my professional survey of Industrial Court, Third Flung, Block 4, Cheyenne, Wyoming, shown on this plat were surveyed during the month of December, 2011, that the measurements shown thereon were taken from permanent monuments and the plat is a true and correct representation of the land described hereon to the best of my knowledge.



**WYDIGS PROPERTIES  
 SUBDIVISION  
 AND FILING**

A REPLAT OF LOTS  
 2 & 4, BLOCK 4,  
 CAMPSTOOL ADDITION, THIRD FLUNG,  
 CITY OF CHEYENNE,  
 LARAMIE COUNTY, WYOMING.

PREPARED DECEMBER, 2011

**STEEL SURVEYING SERVICES, LLC**

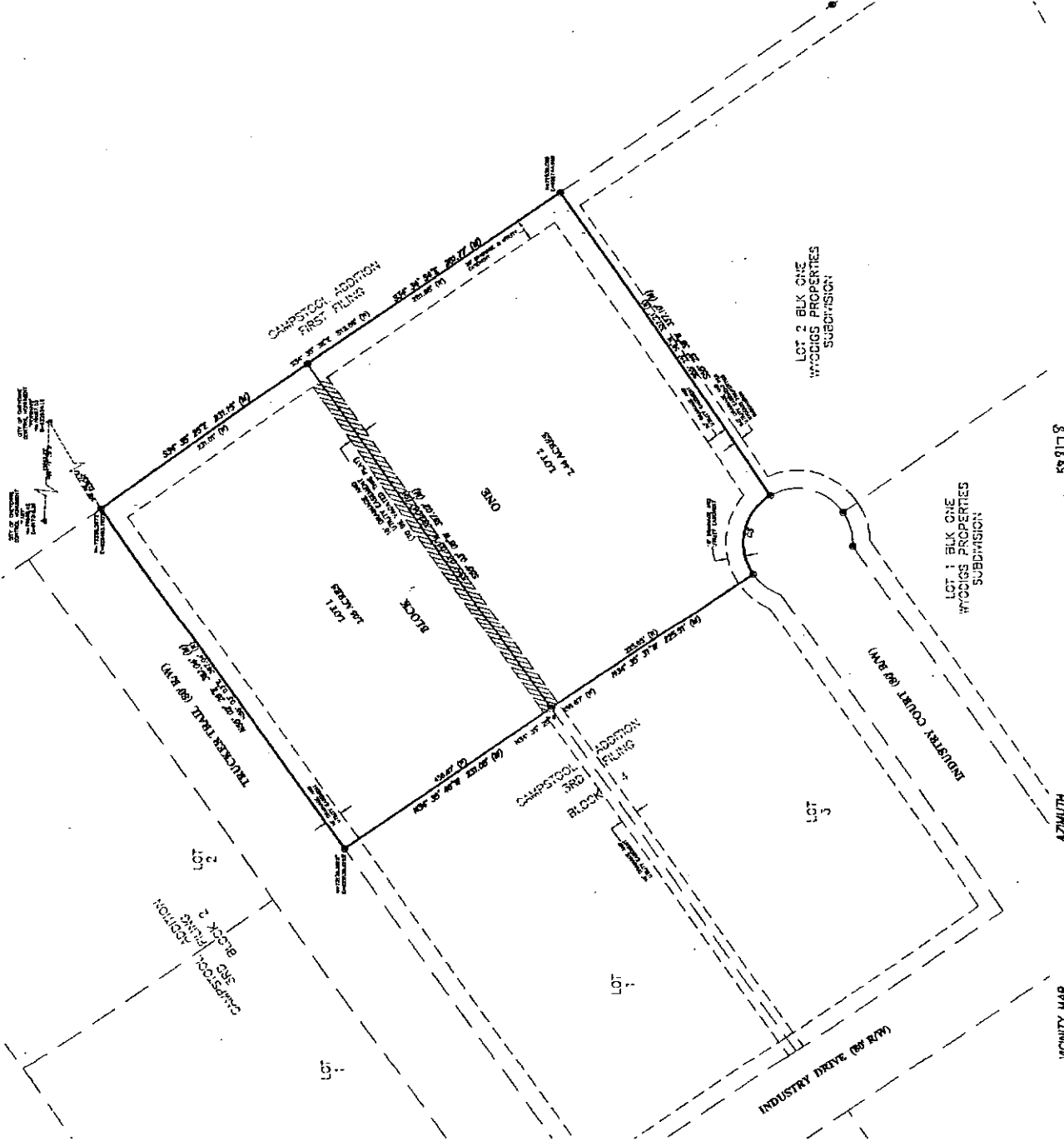
PROFESSIONAL LAND SURVEYORS  
 1101 S. 1915 ST., CHEYENNE, WY. 82001 (307)654-7973  
 766 GILCHRIST ST. WHEATLAND, WY. 82001 (307)328-9789



**LEGEND**

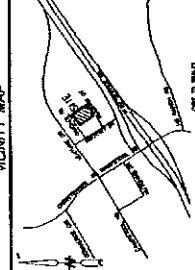
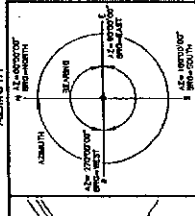
- ▬ ROAD (4" WIDE) CAP STRENGTH T-15 2117
  - ▬ ROAD (4" WIDE)
  - ▬ 6" CONC. CURB WITH 12" STORM DWP
  - ▬ 8" CONC. CURB WITH 12" STORM DWP
  - ▬ (1) DEPICTED DATA HAS SURVEY
  - ▬ (2) DEPICTED DATA HAS BEEN ADJUSTED BY CONTROL ADJUSTION THIS PLUNG
  - ▬ IF CHANGE AND UTILITY EASEMENT TO BE VACATED THIS PLUNG
- NOTES**
- 1) BASE OF CURB AND CURB EASEMENT SHALL BE APPROVED
  - 2) ROAD EASEMENT DOES NOT FALL WITHIN CROWN OF ROAD
  - 3) ROAD EASEMENT DOES NOT FALL WITHIN CROWN OF ROAD
  - 4) ROAD EASEMENT DOES NOT FALL WITHIN CROWN OF ROAD
  - 5) ROAD EASEMENT DOES NOT FALL WITHIN CROWN OF ROAD

CURVE #	DATA	STATION	CURVE BEARING	CURVE LENGTH	ARC LENGTH	CHORD
1	5° 12' 30"	242.95	107° 22' 30"	15.47'	15.47'	15.47'



Survey No. **589178**  
 The City of Cheyenne, Wyoming  
 has accepted this plat and the survey shown thereon for filing in the City of Cheyenne, Wyoming, on this 21<sup>st</sup> day of MARCH, 2012.

FILED RECORD  
 JOHN A. SLAV  
 REGISTERED PROFESSIONAL LAND SURVEYOR  
 STATE OF WYOMING  
 LICENSE NO. 6951



2011 10 20 10:11 AM / 11:05 AM PAUL WOODS DCLD

## SUBDIVISION SETUP FORM

Subdivision Proper Name WYODIGS PROPERTIES SUBDIVISION 2ND FILING

Received from STEIL SURVEYING

Grantor CAMPSTOOL LAND CO, LLC Document Date 2/27/12

Grantee IN RE WYODIGS PROPERTIES SUBD 2F

Legal Description L2,4 BL4 CAMPSTOOL ADD 03F

### SUBDIVISION INFORMATION

Short Alpha Name WYODIGS PROPERTIES SUBD 02F Number 3179

Block Name BLOCK Lot Name LOT

Replats Previous Platting Y/N Defunct Subdivision Y/N

Covenants Book/Page \_\_\_\_\_ Old Hard Copy Book/Number COMP

### ABSTRACTING INFORMATION

For suffix 40-69 (Existing Parcels Affected)

TWN/SUBD	RNG/BLOCK	BEGIN SEC/LOT	END SEC/LOT	R/V SW
<u>2898</u>	<u>4</u>	<u>2</u>	_____	<u>R</u>
<u>2898</u>	<u>4</u>	<u>4</u>	_____	<u>R</u>
_____	_____	_____	_____	_____
_____	_____	_____	_____	_____
_____	_____	_____	_____	_____
_____	_____	_____	_____	_____
_____	_____	_____	_____	_____
_____	_____	_____	_____	_____
_____	_____	_____	_____	_____

For suffix 70-99 (New Parcels Created)

BLOCK #	BEGIN LOT	END LOT	BLOCK #	BEGIN LOT	END LOT
<u>3179</u>	<u>1</u>	<u>2</u>	_____	_____	_____
_____	_____	_____	_____	_____	_____
_____	_____	_____	_____	_____	_____
_____	_____	_____	_____	_____	_____
_____	_____	_____	_____	_____	_____
_____	_____	_____	_____	_____	_____
_____	_____	_____	_____	_____	_____
_____	_____	_____	_____	_____	_____
_____	_____	_____	_____	_____	_____