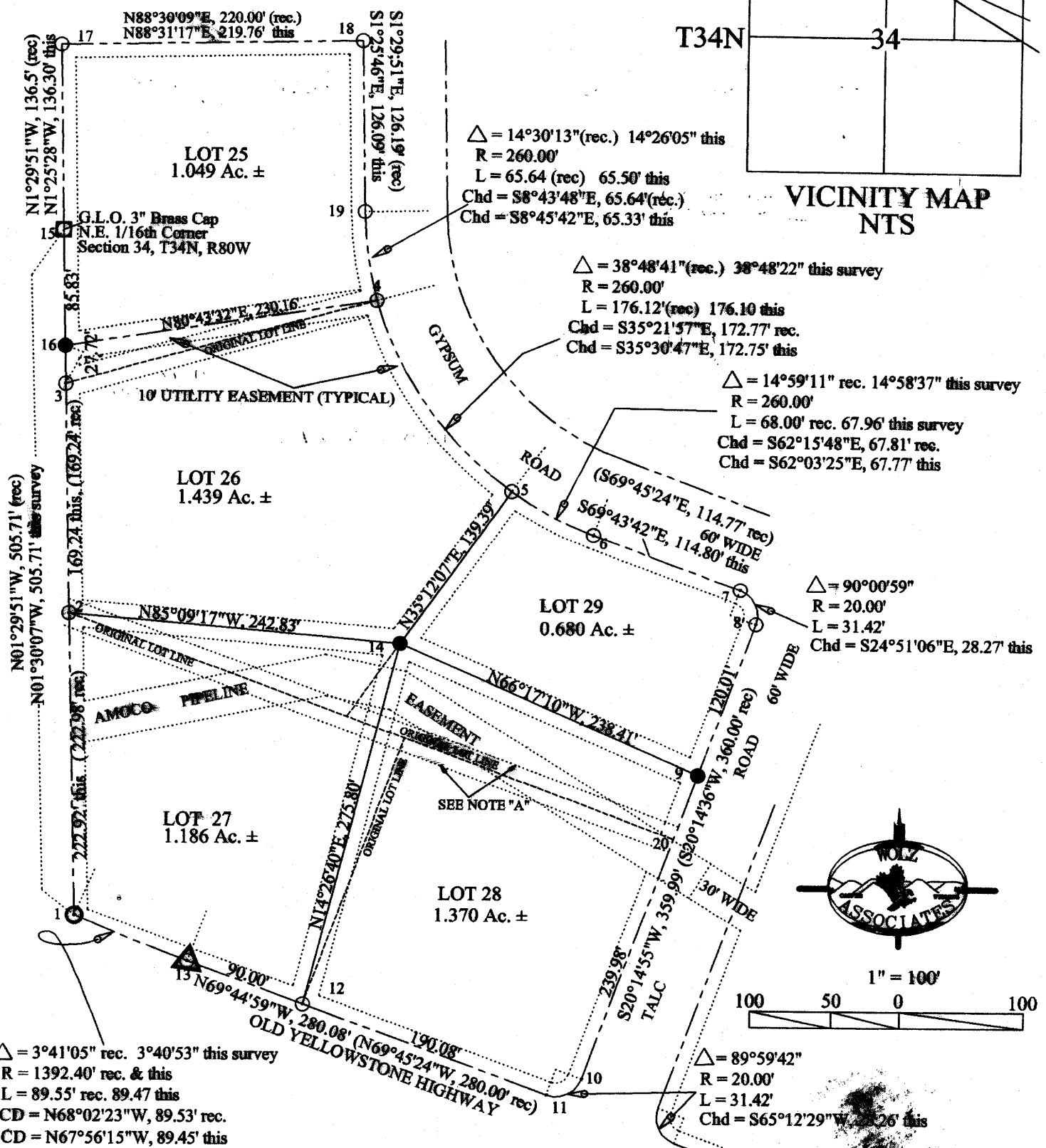
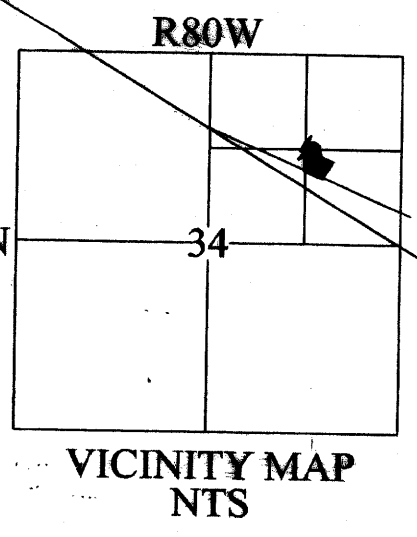


792967



$\Delta = 3^{\circ}41'05''$ rec. $3^{\circ}40'53''$ this survey
 R = 1392.40' rec. & this
 L = 89.55' rec. 89.47 this
 CD = N68°02'23"W, 89.53' rec.
 CD = N67°56'15"W, 89.45' this

$\Delta = 14^{\circ}30'13''$ (rec.) $14^{\circ}26'05''$ this
 R = 260.00'
 L = 65.64 (rec) 65.50' this
 Chd = S8°43'48"E, 65.64'(rec.)
 Chd = S8°45'42"E, 65.33' this

$\Delta = 38^{\circ}48'41''$ (rec.) $38^{\circ}48'22''$ this survey
 R = 260.00'
 L = 176.12'(rec) 176.10 this
 Chd = S35°21'57"E, 172.77' rec.
 Chd = S35°30'47"E, 172.75' this

$\Delta = 14^{\circ}59'11''$ rec. $14^{\circ}58'37''$ this survey
 R = 260.00'
 L = 68.00' rec. 67.96' this survey
 Chd = S62°15'48"E, 67.81' rec.
 Chd = S62°03'25"E, 67.77' this

$\Delta = 90^{\circ}00'59''$
 R = 20.00'
 L = 31.42'
 Chd = S24°51'06"E, 28.27' this

$\Delta = 89^{\circ}59'42''$
 R = 20.00'
 L = 31.42'
 Chd = S65°12'29"W, 28.26' this

NOTE "A" ALL ORIGINAL EASEMENTS ON THE PLAT OF AIR RAIL INDUSTRIAL PARK HAVE BEEN RETAINED AT REQUEST OF UTILITIES

OLD NORTH LOT CORNERS OF LOT 28 ARE UNDER ASPHALT PAVING, AND WERE NOT REMOVED. CNR #3 WILL BE REMOVED.

CORNER	DESCRIPTION
1	FOUND 4" BRASS CAP BY L.S. 520
2-8	FOUND 5/8" REBARS BY W.L.C.
10-12	
17-19	
20	MAGNETIC SIGNAL UNDER ASPHALT
13	FOUND W.Y.D.O.T. RIGHT-OF-WAY MONUMENT
9,14, & 16	SET 5/8" REBAR THIS SURVEY
15	STD. G.L.O. 3" BRASS CAP NE1/16TH CORNER

AMENDED PLAT OF
 LOTS 25, 26, 27, 28, AND 29
 OF AIR-RAIL INDUSTRIAL PARK
 IN THE SE1/4NE1/4 OF SECTION 34
 T34N, R80W, 6th P.M.
 NATRONA COUNTY, WYOMING

CERTIFICATE OF OWNER

C. C. Cowboys Inc. and RussLee Properties LLC, owners and proprietors, hereby certify that the following replat of lots 25, 26, 27, 28, and 29 of the "Air Rail Industrial Park", being a portion of the SE1/4NE1/4 of Section 34, Township 34 North, Range 80 West of the Sixth Principal Meridian in Natrona County, Wyoming as it appears on this replat is with the free consent and in accordance with the desires of the above named and undersigned owners and proprietors of said lands. Dated at Casper, Wyoming, this 22nd day of May, 2006.

C. C. Cowboys Inc., Lots 27 and 28 as amended:
by Sonny A. Pilcher
Sonny A. Pilcher, President

Barbara E. Gerlock
Attest: Barbara E. Gerlock Secretary

RussLee Properties L.L.C., Lots 25, 26, and 29, as amended:
by Wayne R. Riggs
Wayne R. Riggs, partner

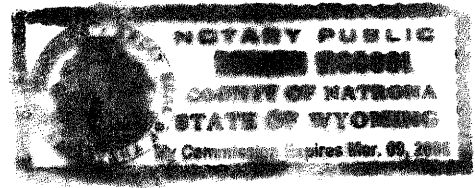
Donald L. Meyer
Donald L. Meyer, partner

STATE OF WYOMING }
COUNTY OF NATRONA } SS.

The foregoing instrument was acknowledged before me by Sonny A. Pilcher, Barbara E. Gerlock, Wayne R. Riggs, and Donald L. Meyer on this 22nd day of May, 2006.

Reedna McCool
Witness my hand and official seal.

My commission expires: March 9, 2008
NOTARY PUBLIC



APPROVALS:

APPROVED THIS 21 DAY OF May, 2006
Jatsy Horton
County Development Director

APPROVED THIS 19th DAY OF MAY, 2006
Mark [unclear]
County Surveyor

APPROVED THIS 30th DAY OF May, 2006
John E. Jewell
County Health Department

FILED IN THE OFFICE OF THE COUNTY CLERK:

**AMENDED PLAT OF
LOTS 25, 26, 27, 28, AND 29
OF AIR-RAIL INDUSTRIAL PARK
IN THE SE1/4NE1/4 OF SECTION 34
T34N, R80W, 6th P.M.
NATRONA COUNTY, WYOMING**

DESCRIPTION

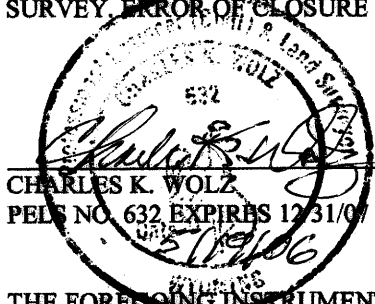
A PARCEL OF LAND IN THE SE1/4NE1/4 OF SECTION 34, T34N, R80W, 6th P.M., NATRONA COUNTY, WYOMING, BEING MORE PARTICULARLY DESCRIBED AS LOTS 25 THROUGH 29 INCLUSIVE, OF THE AIR-RAIL INDUSTRIAL PARK, AS FOLLOWS:

BEGINNING AT THE NE1/16TH CORNER OF SAID SECTION 34 MONUMENTED BY A G.L.O. BRASS CAP;
THENCE N1°25'28"W, 136.30 FEET TO THE NORTHWEST CORNER OF LOT 25;
THENCE N88°31'17"E, 219.76 FEET ALONG THE NORTH LINE OF SAID LOT 25 TO A POINT;
THENCE S1°25'46"E, 126.09 FEET ALONG THE EAST LINE OF SAID LOT 25 TO A POINT;
THENCE ALONG THE ARC OF A TRUE TANGENTIAL CURVE TO THE LEFT, THROUGH A CENTRAL ANGLE OF 14°26'05", A RADIUS OF 260.00 FEET, AN ARC DISTANCE OF 65.50 FEET TO A POINT, THE LONG CHORD LYING S8°45'42"E, 65.33 FEET;
THENCE ALONG THE ARC OF A TRUE TANGENTIAL CURVE TO THE LEFT THROUGH A CENTRAL ANGLE OF 38°48'22", A RADIUS OF 260 FEET, AN ARC DISTANCE OF 176.10 FEET TO A POINT, THE LONG CHORD LYING S35°30'47"E, 172.75 FEET TO A POINT;
THENCE ALONG THE ARC OF A TRUE TANGENTIAL CURVE TO THE LEFT, THROUGH A CENTRAL ANGLE OF 14°58'37", A RADIUS OF 260 FEET, AND ARC DISTANCE OF 67.96 FEET TO A POINT, THE LONG CHORD LYING S62°03'25"E, 67.77 FEET;
THENCE ALONG THE NORTH LINE OF SAID LOT 29, S69°43'42"E, 114.80 FEET TO A POINT;
THENCE ALONG THE ARC OF A TRUE TANGENTIAL CURVE TO THE RIGHT, THROUGH A CENTRAL ANGLE OF 90°00'59", A RADIUS OF 20.00 FEET, AN ARC DISTANCE OF 31.42 FEET TO A POINT, THE LONG CHORD LYING S24°51'06"E, 28.27 FEET;
THENCE ALONG THE EASTERLY LINE OF SAID LOTS 29 AND 28, S20°14'55"W, 359.99 FEET TO A POINT;
THENCE ALONG THE ARC OF A TRUE TANGENTIAL CURVE TO THE RIGHT, THROUGH A CENTRAL ANGLE OF 89°59'42", A RADIUS OF 20.00 FEET, AN ARC DISTANCE OF 31.42 FEET, TO A POINT, THE LONG CHORD LYING S65°12'29"W, 28.26 FEET;
THENCE ALONG THE SOUTH LINE OF SAID LOTS 28 AND 27, N69°44'59"W, 280.08 FEET TO A POINT;
THENCE ALONG THE ARC OF A TRUE TANGENTIAL CURVE TO THE RIGHT, THROUGH A CENTRAL ANGLE OF 3°40'53", A RADIUS OF 1392.40 FEET, AN ARC DISTANCE OF 89.47 FEET, TO A POINT, THE LONG CHORD LYING N68°02'23"W, 89.53 FEET,
THENCE N1°30'07"W, 505.71 FEET TO THE POINT OF BEGINNING, AND CONTAINING 5.724 ACRES, MORE OR LESS. CLOSURE IS 1:19,234

STATE OF WYOMING }
COUNTY OF NATRONA } SS.

CERTIFICATE OF SURVEYOR

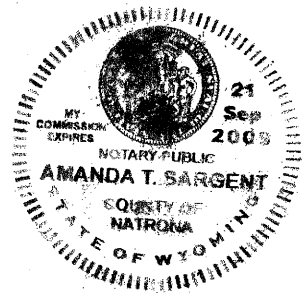
I, CHARLES K. WOLZ, A REGISTERED PROFESSIONAL ENGINEER AND LAND SURVEYOR, LICENSE NO. P.E.L.S. 632, HEREBY CERTIFY THAT THIS MAP WAS DRAWN FROM ELECTRONIC NOTES TAKEN DURING AN ACTUAL SURVEY MADE BY ME ON FEBRUARY 2, 2006, AND THAT THIS MAP, TO THE BEST OF MY KNOWLEDGE AND BELIEF, CORRECTLY AND ACCURATELY REPRESENTS SAID SURVEY. ERROR OF CLOSURE EXCEEDS 1:106,500



THE FOREGOING INSTRUMENT WAS ACKNOWLEDGED BEFORE ME BY CHARLES K. WOLZ, THIS 19 DAY OF May 2006.

WITNESS MY HAND AND OFFICIAL SEAL.

Amanda T. Sargent MY COMMISSION EXPIRES:
NOTARY PUBLIC



AMENDED PLAT OF
LOTS 25, 26, 27, 28, AND 29
OF AIR-RAIL INDUSTRIAL PARK
IN THE SE1/4NE1/4 OF SECTION 34
T34N, R80W, 6th P.M.
NATRONA COUNTY, WYOMING