

**CERTIFICATE OF DEDICATION**

STATE OF WYOMING  
 COUNTY OF NATRONA

THE UNDERSIGNED BOTTOM ROCK, LLC, DO HEREBY CERTIFY THAT THEY ARE THE OWNERS AND PROPRIETORS OF THE FOREGOING PLAT OF ANTLER RIDGE SUBDIVISION BEING ALL OF THE EISENHEI AND A PORTION OF THE SWERSEL OF SECTION 14, T4N, 21S, R12W, EAST AND WEST PARTS, IN SECTION 14 AND 15, T4N, 21S, R12W, EAST AND WEST PARTS, SUBDIVISION AND BEING PARTICULARLY ASSIGNED AS FOLLOWS:

LOT 21, 5.00 ACRES, S40°51'56"E 633.00' TO THE WEST CORNER OF SAID SECTION 14, MONUMENTED BY A BRASS CAP AND BEING THE NORTHEAST CORNER OF THE PARCEL AND THE POINT OF BEGINNING.

THENCE S00°30'14"W ALONG THE EAST LINE OF SAID SECTION 14, A DISTANCE OF 128.19' TO THE POINT OF BEGINNING OF SAID SECTION 14, MONUMENTED BY AN ALUMINUM CAP.

THENCE S00°30'14"W ALONG THE SOUTH LINE OF SAID SECTION 14, A DISTANCE OF 670.00 FEET TO THE SOUTHWEST CORNER OF THE PARCEL, MONUMENTED BY AN ALUMINUM CAP.

THENCE S00°30'14"W ALONG THE WEST LINE OF SAID SECTION 14, A DISTANCE OF 670.00 FEET TO THE NORTHWEST CORNER OF THE PARCEL, MONUMENTED BY AN ALUMINUM CAP.

THENCE S00°30'14"W ALONG THE WEST LINE OF SAID SECTION 14, A DISTANCE OF 489.19 FEET TO THE NORTHEAST CORNER OF THE PARCEL, MONUMENTED BY AN ALUMINUM CAP.

THENCE S00°30'14"W ALONG THE SOUTH LINE OF SAID SECTION 14, A DISTANCE OF 670.00 FEET TO THE POINT OF BEGINNING.

THENCE S00°30'14"W ALONG THE EAST LINE OF SAID SECTION 14, A DISTANCE OF 128.19' TO THE POINT OF BEGINNING OF SAID SECTION 14, MONUMENTED BY AN ALUMINUM CAP.

THENCE S00°30'14"W ALONG THE SOUTH LINE OF SAID SECTION 14, A DISTANCE OF 670.00 FEET TO THE SOUTHWEST CORNER OF THE PARCEL, MONUMENTED BY AN ALUMINUM CAP.

THENCE S00°30'14"W ALONG THE WEST LINE OF SAID SECTION 14, A DISTANCE OF 670.00 FEET TO THE NORTHWEST CORNER OF THE PARCEL, MONUMENTED BY AN ALUMINUM CAP.

THENCE S00°30'14"W ALONG THE WEST LINE OF SAID SECTION 14, A DISTANCE OF 489.19 FEET TO THE NORTHEAST CORNER OF THE PARCEL, MONUMENTED BY AN ALUMINUM CAP.

THENCE S00°30'14"W ALONG THE SOUTH LINE OF SAID SECTION 14, A DISTANCE OF 670.00 FEET TO THE POINT OF BEGINNING.

THENCE S00°30'14"W ALONG THE EAST LINE OF SAID SECTION 14, A DISTANCE OF 128.19' TO THE POINT OF BEGINNING OF SAID SECTION 14, MONUMENTED BY AN ALUMINUM CAP.

THENCE S00°30'14"W ALONG THE SOUTH LINE OF SAID SECTION 14, A DISTANCE OF 670.00 FEET TO THE SOUTHWEST CORNER OF THE PARCEL, MONUMENTED BY AN ALUMINUM CAP.

THENCE S00°30'14"W ALONG THE WEST LINE OF SAID SECTION 14, A DISTANCE OF 670.00 FEET TO THE NORTHWEST CORNER OF THE PARCEL, MONUMENTED BY AN ALUMINUM CAP.

THENCE S00°30'14"W ALONG THE WEST LINE OF SAID SECTION 14, A DISTANCE OF 489.19 FEET TO THE NORTHEAST CORNER OF THE PARCEL, MONUMENTED BY AN ALUMINUM CAP.

THENCE S00°30'14"W ALONG THE SOUTH LINE OF SAID SECTION 14, A DISTANCE OF 670.00 FEET TO THE POINT OF BEGINNING.

THENCE S00°30'14"W ALONG THE EAST LINE OF SAID SECTION 14, A DISTANCE OF 128.19' TO THE POINT OF BEGINNING OF SAID SECTION 14, MONUMENTED BY AN ALUMINUM CAP.

THENCE S00°30'14"W ALONG THE SOUTH LINE OF SAID SECTION 14, A DISTANCE OF 670.00 FEET TO THE SOUTHWEST CORNER OF THE PARCEL, MONUMENTED BY AN ALUMINUM CAP.

THENCE S00°30'14"W ALONG THE WEST LINE OF SAID SECTION 14, A DISTANCE OF 670.00 FEET TO THE NORTHWEST CORNER OF THE PARCEL, MONUMENTED BY AN ALUMINUM CAP.

THENCE S00°30'14"W ALONG THE WEST LINE OF SAID SECTION 14, A DISTANCE OF 489.19 FEET TO THE NORTHEAST CORNER OF THE PARCEL, MONUMENTED BY AN ALUMINUM CAP.

THENCE S00°30'14"W ALONG THE SOUTH LINE OF SAID SECTION 14, A DISTANCE OF 670.00 FEET TO THE POINT OF BEGINNING.

THENCE S00°30'14"W ALONG THE EAST LINE OF SAID SECTION 14, A DISTANCE OF 128.19' TO THE POINT OF BEGINNING OF SAID SECTION 14, MONUMENTED BY AN ALUMINUM CAP.

THENCE S00°30'14"W ALONG THE SOUTH LINE OF SAID SECTION 14, A DISTANCE OF 670.00 FEET TO THE SOUTHWEST CORNER OF THE PARCEL, MONUMENTED BY AN ALUMINUM CAP.

THENCE S00°30'14"W ALONG THE WEST LINE OF SAID SECTION 14, A DISTANCE OF 670.00 FEET TO THE NORTHWEST CORNER OF THE PARCEL, MONUMENTED BY AN ALUMINUM CAP.

THENCE S00°30'14"W ALONG THE WEST LINE OF SAID SECTION 14, A DISTANCE OF 489.19 FEET TO THE NORTHEAST CORNER OF THE PARCEL, MONUMENTED BY AN ALUMINUM CAP.

THENCE S00°30'14"W ALONG THE SOUTH LINE OF SAID SECTION 14, A DISTANCE OF 670.00 FEET TO THE POINT OF BEGINNING.

THENCE S00°30'14"W ALONG THE EAST LINE OF SAID SECTION 14, A DISTANCE OF 128.19' TO THE POINT OF BEGINNING OF SAID SECTION 14, MONUMENTED BY AN ALUMINUM CAP.

THENCE S00°30'14"W ALONG THE SOUTH LINE OF SAID SECTION 14, A DISTANCE OF 670.00 FEET TO THE SOUTHWEST CORNER OF THE PARCEL, MONUMENTED BY AN ALUMINUM CAP.

THENCE S00°30'14"W ALONG THE WEST LINE OF SAID SECTION 14, A DISTANCE OF 670.00 FEET TO THE NORTHWEST CORNER OF THE PARCEL, MONUMENTED BY AN ALUMINUM CAP.

THENCE S00°30'14"W ALONG THE WEST LINE OF SAID SECTION 14, A DISTANCE OF 489.19 FEET TO THE NORTHEAST CORNER OF THE PARCEL, MONUMENTED BY AN ALUMINUM CAP.

THENCE S00°30'14"W ALONG THE SOUTH LINE OF SAID SECTION 14, A DISTANCE OF 670.00 FEET TO THE POINT OF BEGINNING.

THENCE S00°30'14"W ALONG THE EAST LINE OF SAID SECTION 14, A DISTANCE OF 128.19' TO THE POINT OF BEGINNING OF SAID SECTION 14, MONUMENTED BY AN ALUMINUM CAP.

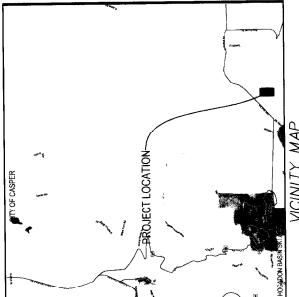
THENCE S00°30'14"W ALONG THE SOUTH LINE OF SAID SECTION 14, A DISTANCE OF 670.00 FEET TO THE SOUTHWEST CORNER OF THE PARCEL, MONUMENTED BY AN ALUMINUM CAP.

THENCE S00°30'14"W ALONG THE WEST LINE OF SAID SECTION 14, A DISTANCE OF 670.00 FEET TO THE NORTHWEST CORNER OF THE PARCEL, MONUMENTED BY AN ALUMINUM CAP.

THENCE S00°30'14"W ALONG THE WEST LINE OF SAID SECTION 14, A DISTANCE OF 489.19 FEET TO THE NORTHEAST CORNER OF THE PARCEL, MONUMENTED BY AN ALUMINUM CAP.

THENCE S00°30'14"W ALONG THE SOUTH LINE OF SAID SECTION 14, A DISTANCE OF 670.00 FEET TO THE POINT OF BEGINNING.

THENCE S00°30'14"W ALONG THE EAST LINE OF SAID SECTION 14, A DISTANCE OF 128.19' TO THE POINT OF BEGINNING OF SAID SECTION 14, MONUMENTED BY AN ALUMINUM CAP.



APPROVALS

APPROVED BY THE NATRONA COUNTY BOARD OF COUNTY COMMISSIONERS THIS 5TH DAY OF November 2019.

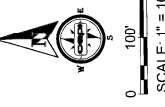
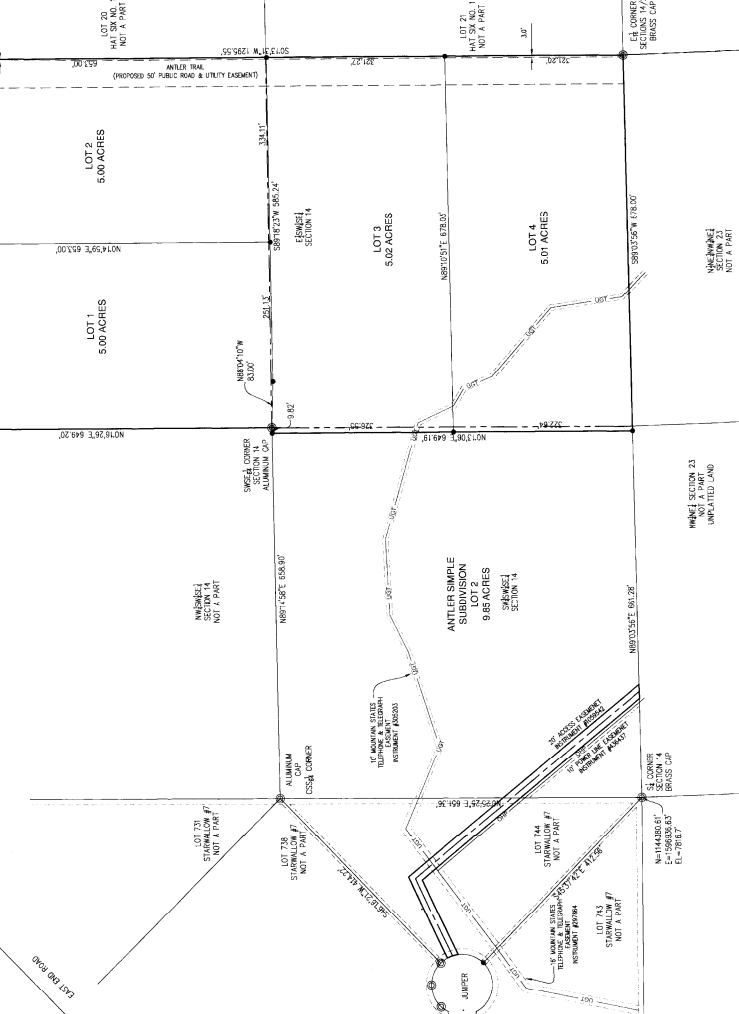
ATTEST: *Joy Red* COUNTY CLERK

INSPECTED AND APPROVED THIS 11th DAY OF October 2019. *Edward Schuman* COUNTY ENGINEER

INSPECTED AND APPROVED THIS 21st DAY OF October 2019. *[Signature]* COUNTY SURVEYOR

ASPECTED AND APPROVED THIS 24th DAY OF October 2019. *[Signature]* COUNTY HEALTH INSPECTOR

- NOTES**
1. REFERENCE TO PLAT IS 11021344.
  2. ZONE AND 183.076.
  3. THE COMPOUNDED ANGLE AT THE POINT OF BEGINNING IS 004250.787, AND THE COMPOUND FACTOR IS 0.99945994.
  4. DISTANCES U.S. SURVEY FEET/ROUND.
  5. ELEVATIONS ARE HAD IN FEET AND NOT MEANT TO BE USED AS DIMENSIONS.
  6. MANDATED SPECIFIC SYSTEMS CONFORMING TO THE REQUIREMENTS OF 2010 CHAPTER 25, STANDARD CODES, SHALL BE INSTALLED AND MAINTAINED. THE INSTALLATION OF SUCH SYSTEMS SHALL BE THE RESPONSIBILITY OF THE SUBDIVISION SYSTEM INSTALLERS. CONSULT WITH A WYOMING LICENSED PROFESSIONAL ENGINEER FOR DESIGN OF MANDATED SPECIFIC SYSTEMS.
  7. SEWER SYSTEMS SHALL NOT BE CONSTRUCTED WHERE THE GROUND SLOPE EQUALS OR EXCEEDS 2% AND WHERE PRECIPITATION RATES ARE 5 MINUTES PER INCH TO 15 MINUTES PER INCH OR WHERE GROUND SLOPE EQUALS OR EXCEEDS 5% AND WHERE PRECIPITATION RATES ARE 16 TO 60 MINUTES PER INCH.
  8. WASTEWATER DISPOSAL SYSTEMS ARE TO BE LOCATED AT LEAST 100 FEET UPDRAIN OF NEIGHBORING PROPERTIES.
  9. GROUNDWATER PROTECTION SHALL BE OBSERVED AT THE TIME OF WAIVER. GROUNDWATER PROTECTION SHALL BE OBSERVED AT LEAST 100 FEET AND RESIDENTIAL WAIVER SHALL HAVE TO HAVE WATER QUALITY MONITORING.
  10. ANY ON-SITE WELLS DELIVERED FOR DOMESTIC USE SHOULD BE SAMPLED AND TESTED FOR NITRATE AND NITROGEN. WATER QUALITY MONITORING SHOULD BE CONDUCTED. ADDITIONAL TREATMENT OF THE WATER SUPPLY MAY BE NECESSARY.
  11. POTENTIAL BUYERS/LOT OWNERS ARE ADVISED TO HIRE A REPUTABLE WELL DRILLING CONTRACTOR AND CONSTRUCT COMPLETE WATER WELLS WITH QUALITIES DESCRIBED IN AN APPROVED REPORT FROM THE WYOMING GEO SURVEY PRIOR TO THE DRILLING OF A WATER WELL.



**CEPI** Civil Engineering Professionals, Inc.  
 668 South Broadway, Suite 207  
 Casper, Wyoming 82401  
 Phone: 307.256.6346 Fax: 307.266.9103  
 www.cepi.org

LEGEND

- SET BRASS CAP
- SET MONUMENT 5/8" REBAR & ALUMINUM CAP
- FOUND MONUMENT AS NOTED

THE FOREGOING INSTRUMENT WAS ACKNOWLEDGED BEFORE ME BY WILLIAM R. THUNDER AND JESSICA ANN THUNDER, VENDOR AND WIFE AND HUSBAND OF SAID VENDOR, COUNTY OF NATRONA, WYOMING.

WITNESS MY HAND AND OFFICIAL SEAL NOTARY PUBLIC

*[Signature]* Notary Public

WITNESSES BY HAND AND OFFICIAL SEAL COUNTY COMMISSIONER *[Signature]*

PLAT OF  
**ANTLER RIDGE SUBDIVISION**

A SUBDIVISION WITHIN NATRONA COUNTY, WYOMING  
 BEING ALL OF THE EISENHEI &  
 A PORTION OF THE SWERSEL OF  
 SECTION 14, T4N, 21S, R12W, EAST AND WEST PARTS,  
 NATRONA COUNTY, WYOMING.

W.D. #B-719