

CERTIFICATE OF SURVEYOR
STATE OF WYOMING)
COUNTY OF NATRONA)
I, Steve M. Castle, Wyoming hereby state that this plat was prepared from notes taken during actual surveys made by me or others under my direct supervision during the month of July, 2011 and that this map correctly represents said surveys. All corners are well shown and marked with iron pins or other suitable material. All dimensions are in feet and decimals thereof and are referred to the true meridian, all being true and correct to the best of my knowledge and belief.

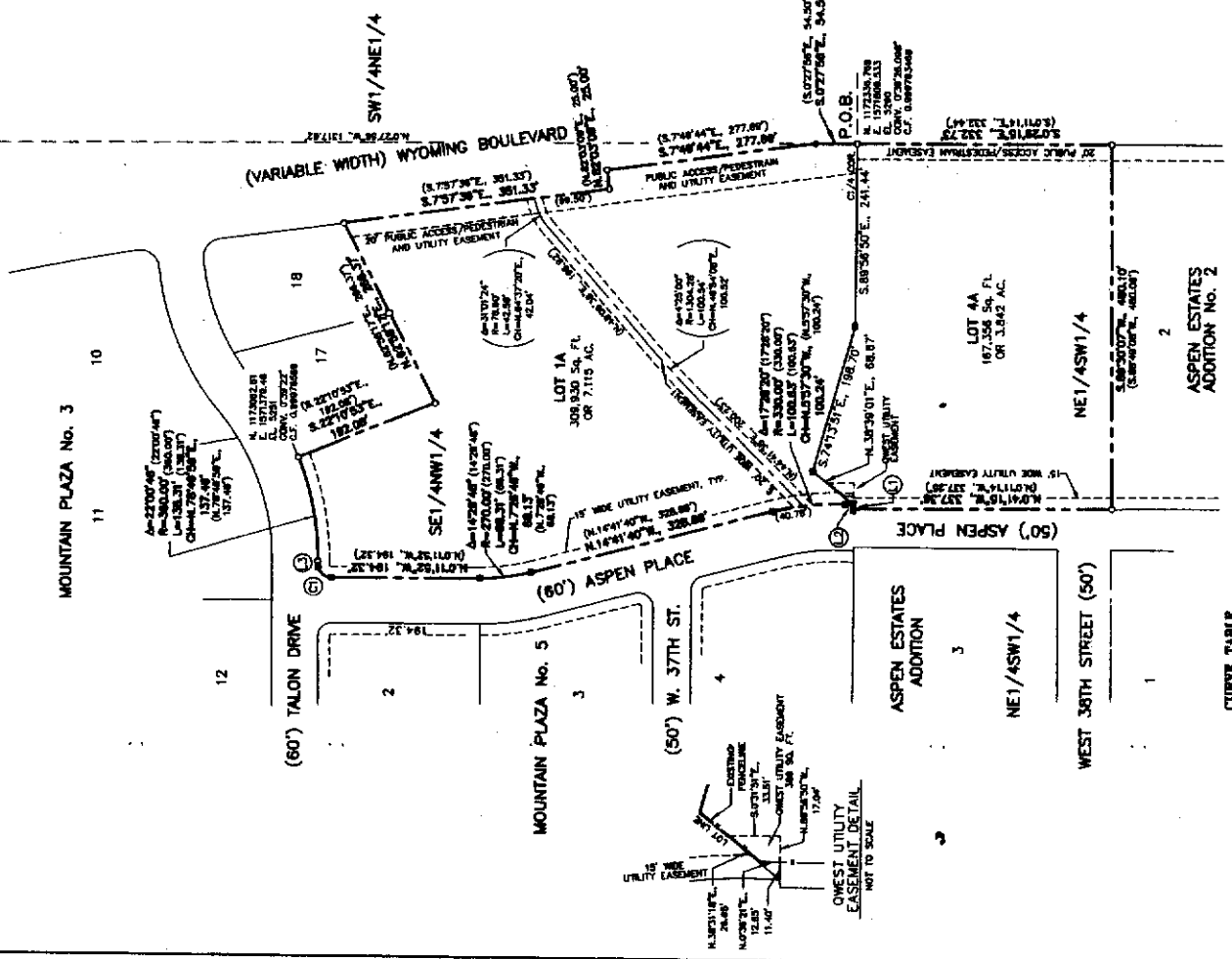
Wyoming Registration No. 0010 L.S.
The foregoing instrument was acknowledged before me by Steve M. Castle this 27th day of August, 2011.
Witness my hand and official seal.
My commission expires: _____



APPROVALS
INSPECTED AND APPROVED on this 18th day of October, 2011.
INSPECTED AND APPROVED on the 18th day of October, 2011.
INSPECTED AND APPROVED on the 18th day of October, 2011.

Filed for Record in the Office of the County Clerk of Natrona County, Wyoming this 18th day of October, 2011.
My term of office expires: _____

DATUM
GROUND BENCHMARK - U.S. SURVEY FEET
COORDINATES REFER TO CITY OF CASPER OR DATUM WYOMING STATE PLANE
ELEVATIONS ARE FOR REFERENCE ONLY AND NOT FOR USE AS A BENCHMARK



CURVE TABLE

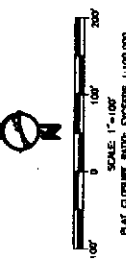
CURVE	DELTA	RADIUS	LENGTH	CHORD
C1	90°00'10"	17.50'	27.48'	N.44°48'13"E, 24.75'

LINE TABLE (RECORD)

LINE	MEASURED	RECORD
L1	5.8935650'E, 5.63'	(N.2°48'40"E, 6.59')
L2	N.2°48'40"E, 6.59'	(N.89°48'18"E, 4.91')
L3	N.89°48'18"E, 4.91'	(N.89°48'18"E, 4.91')



LEGEND
RECORDED BRASS CAP
RECOVERED 5/8" REBAR W/AL CAP
RECOVERED 1/2" REBAR W/AL CAP
WITNESS CORNER
SUBDIVISION BOUNDARY
EASEMENT



ACKNOWLEDGEMENTS
State of Wyoming)
County of Natrona)
day of _____, 2011.
Witness my hand and official seal.
My commission expires: _____

State of Wyoming)
County of Natrona)
day of _____, 2011.
Witness my hand and official seal.
My commission expires: _____

State of Wyoming)
County of Natrona)
day of _____, 2011.
Witness my hand and official seal.
My commission expires: _____

The foregoing instrument was acknowledged before me by _____, 2011.
President, this _____ day of _____, 2011.

The foregoing instrument was acknowledged before me by _____, 2011.
President, this _____ day of _____, 2011.

The foregoing instrument was acknowledged before me by _____, 2011.
President, this _____ day of _____, 2011.