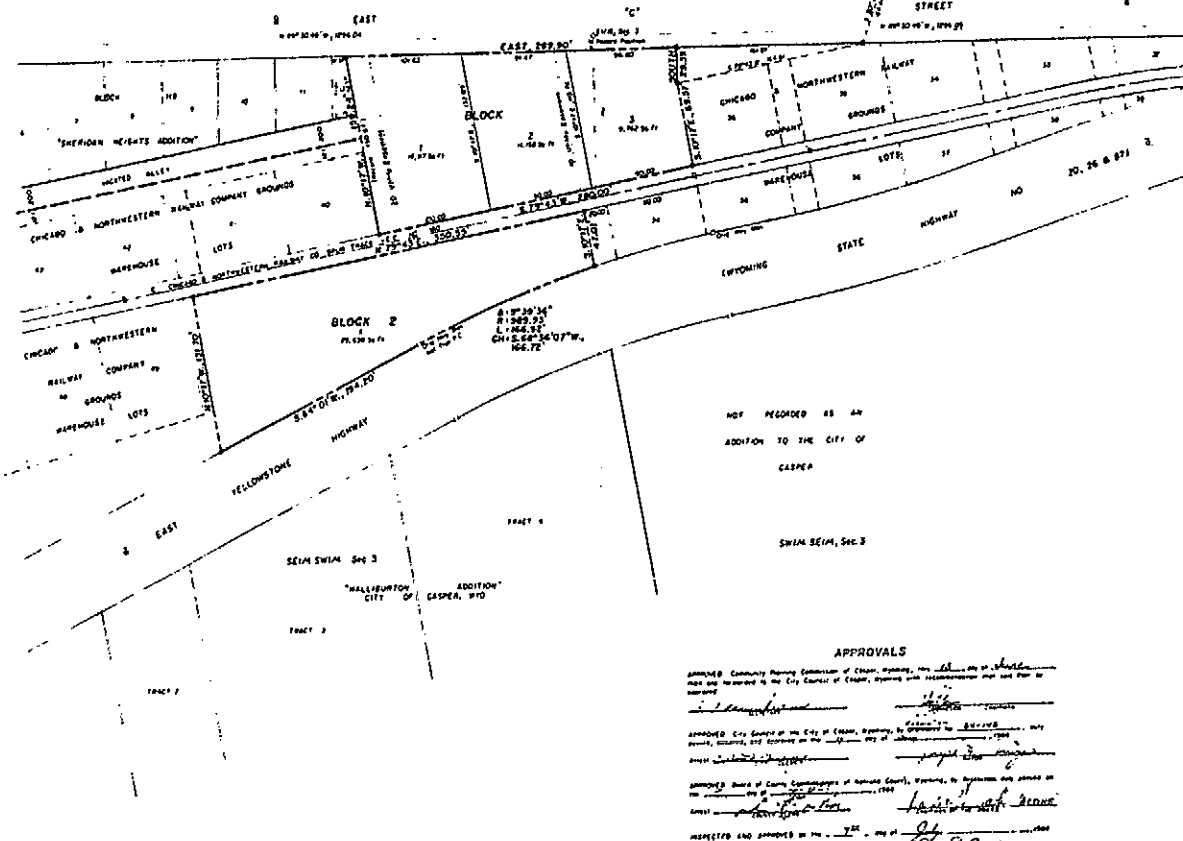
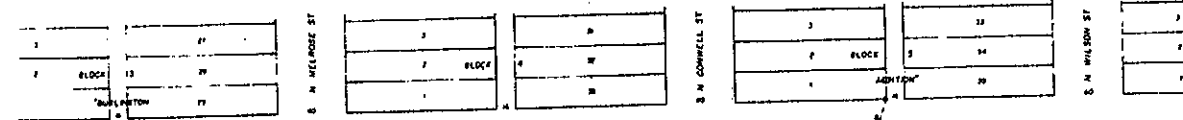


377818



PLAT OF
"B R S ADDITION"
TO THE CITY OF CASPER, WYOMING
A REPEAT OF A PORTION OF
"SHERIDAN HEIGHTS ADDITION"
TO THE CITY OF CASPER, WYOMING
AND
A SUBDIVISION OF PORTIONS OF THE
CHICAGO & NORTHWESTERN RAILWAY COMPANY GROUNDS
ALL IN
THE SE1/4 SW1/4 AND SW1/4 SW1/4, SECTION 3
TOWNSHIP 33 NORTH, RANGE 79 WEST
SIXTH PRINCIPAL MERIDIAN
NATRONA COUNTY, WYOMING
SCALE 1" = 40'

CERTIFICATE OF DEDICATION

Frank Schultz, an individual, being duly sworn, do hereby certify that he is the owner and proprietor of the foregoing plat and that it was prepared by him and that the same complies with the provisions of the Act to Incorporate the City of Casper, Wyoming, as amended, and that the same is a true and correct copy of the original plat as the same appears on the files of the County Clerk of Natrona County, Wyoming.

BLOCK 1

Containing the southeast corner of lot 2, block 2 of Sheridan Heights Addition to the City of Casper, Wyoming, Section 3 Township 33 North, Range 79 West, Sixth Principal Meridian, Natrona County, Wyoming, and the northwest corner of lot 3 of said block 2, containing 1.9523 acres, more or less.

BLOCK 2

Containing the southeast corner of lot 2, block 2 of Sheridan Heights Addition to the City of Casper, Wyoming, Section 3 Township 33 North, Range 79 West, Sixth Principal Meridian, Natrona County, Wyoming, and the northwest corner of lot 3 of said block 2, containing 1.9523 acres, more or less.

APPROVALS

APPROVED: Community Planning Commission of Casper, Wyoming, this 10th day of March, 1954, by its members...

APPROVED: City Council of the City of Casper, Wyoming, this 10th day of March, 1954, by its members...

APPROVED: Board of County Commissioners of Natrona County, Wyoming, this 10th day of March, 1954, by its members...

ACKNOWLEDGEMENT

STATE OF WYOMING, COUNTY OF NATRONA

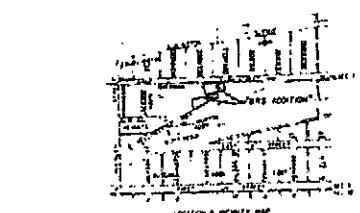
The foregoing plat was acknowledged before me by Frank Schultz on this 10th day of March, 1954.

STATE OF WYOMING, COUNTY OF NATRONA

The foregoing plat was acknowledged before me by Frank Schultz on this 10th day of March, 1954.

CERTIFICATE OF SURVEYOR

I, Surveyor of Casper, Wyoming, hereby certify that this plat was prepared by me and that it is a true and correct copy of the original plat as the same appears on the files of the County Clerk of Natrona County, Wyoming.



SCALE OF FEET

LEGEND
 Area: Red
 Right of Way: Blue
 Easement: Green
 Survey Line: Black
 Subdivision Boundary: Dotted
 Elevation: Contour lines
 North Arrow
 Surveyor's Name: WASHINGTON LEAHY CARPENTER & JOHNSON, INC.