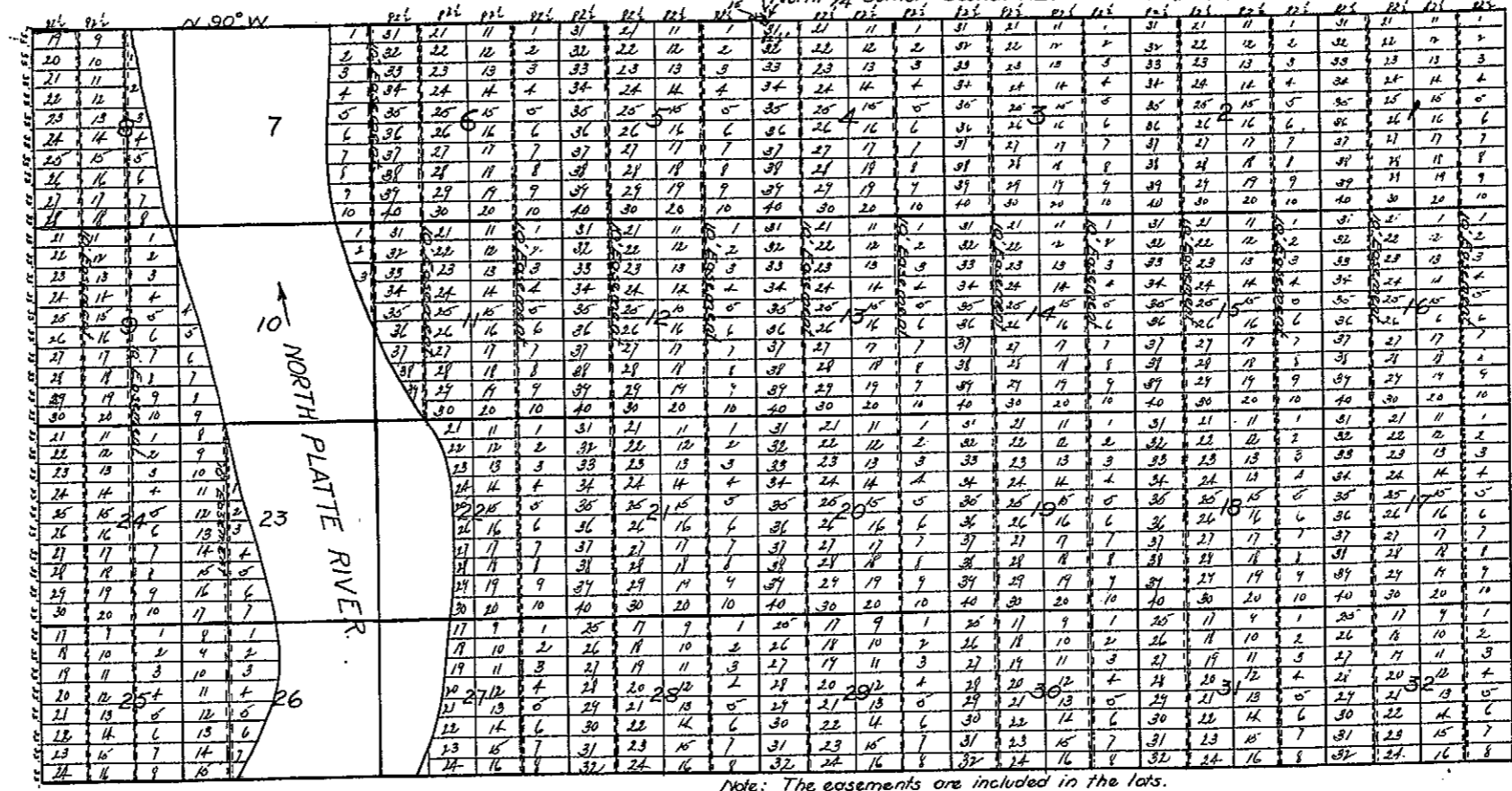


FIRST ADDITION
TRUSTEES SUBDIVISION
BESSEMER BEND DOME
Parts of Sec 22 T32N R81W
Scale 1 in = 150 ft

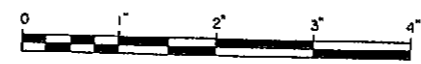
Mag. Vari. 16°30' E

North 1/4 Corner, Section 22, T32N, R81W, of 6PM, Govt. stone.



Note: The easements are included in the lots.

14733



ATLAS REPRODUCTION

AFFIDAVIT OF OWNER

State of Wyoming } ss
 County of Natrona }

This is to certify that the subdivisions shown hereon as parts of the Northeast Quarter of the North West Quarter (NE 1/4 NW 1/4) and the North West Quarter of the North East Quarter (NW 1/4 NE 1/4) of Section 22 T.32N. R.81W. of 6 P.M. as the same appears on this map and designated as blocks 1 to 32 inclusive, is with free consent and in accordance with the desire of the undersigned owner.

Robert A. McHenry
Trustee owner

Witness Karl A. Hamilton

Dated 10th day of June - 1920

Subscribed and sworn to before me this 12 day of June 1920.

My Commission expires 2. 27 1921 W. B. Howland
Notary Public.

CERTIFICATE OF SURVEYOR

State of Wyoming } ss
 County of Natrona }

I, W. B. Howland, of Parkerton Wyoming hereby certify that this map was made from notes taken during an actual survey made by me on Sept. 4, to Nov. 28, 1920. that all blocks, lots and easements for the necessary ingress and egress of lot owners in said subdivision as per recorded plat are as shown on the plat and that all bearings and distances were accurately determined and are as shown on the plat.

W. B. Howland
Surveyor

Dec. 13, 1930
9:40
140
H. Carlson

