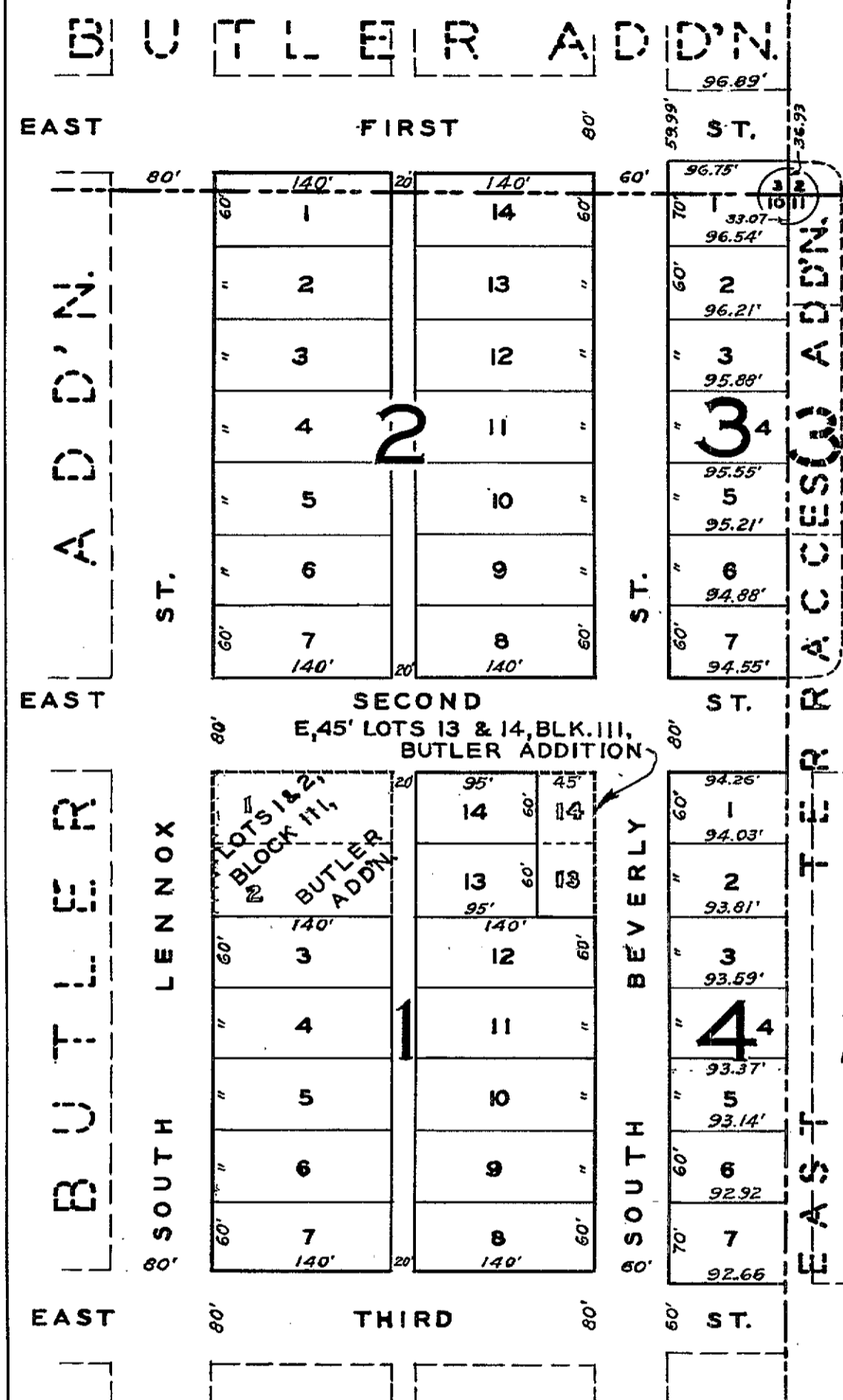


90/102

BEVERLY ADDITION **Folder**



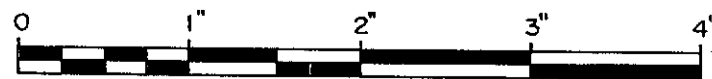
ENGINEER'S CERTIFICATE  
 I, Karl S. Albert, hereby certify that this map was made from notes taken on the survey made under my direction Aug. 9-10, 1938, staking out these Lots and Blocks, and that it correctly shows the location and dimensions of said Lots and Blocks.

*Karl S. Albert*  
 KARL S. ALBERT

WYOMING ENGINEER'S LICENSE NO. 232

**BEVERLY ADDITION  
 TO THE CITY OF CASPER  
 WYOMING**

SCALE: 1" = 100'



ATLAS REPRODUCTION

STATE OF WYOMING, }  
 County of Natrona }  
 This instrument was filed for record  
 August 31 1938  
 at 2:45 P. M., and duly Recorded  
 in Book 90 of *Deeds* page 102  
 \_\_\_\_\_  
 County Clerk

