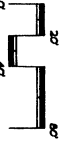


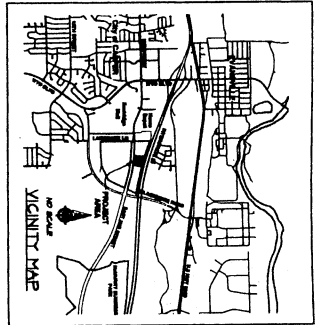
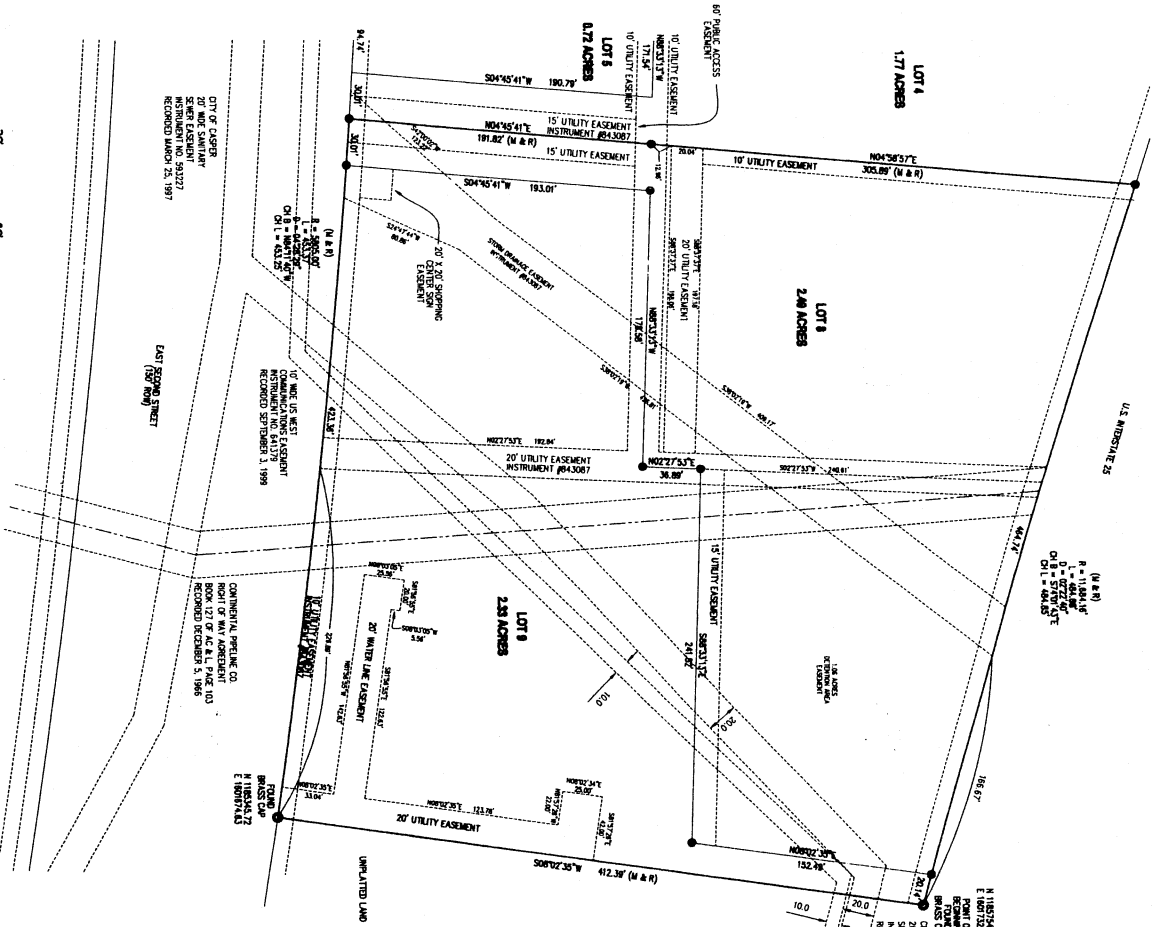


SCALE: 1" = 40'



LEGEND

- ▲ SET BRASS CAP
- SET ALUMINUM 5/8" NEMA
- FOUND MONUMENT AS NOTED



(N & R)
R = 1/8 INCH
D = 1/4 INCH
O = 1/2 INCH
O = 3/4 INCH

APPROVALS
APPROVED BY THE CITY OF CASPER COMMUNITY DEVELOPMENT DIRECTOR THIS 14TH DAY OF APRIL, 2009.
Deirdre Williams
COMMUNITY DEVELOPMENT DIRECTOR

INSPECTED AND APPROVED THIS 14TH DAY OF APRIL, 2009.
David J. ...
CITY ENGINEER

INSPECTED AND APPROVED THIS 14TH DAY OF APRIL, 2009.
David J. ...
CITY SURVEYOR

RECORDED
FILED FOR RECORD IN THE OFFICE OF THE COUNTY CLERK OF NATRONA COUNTY, WYOMING THIS 23RD DAY OF NOVEMBER, 2009.
INSTRUMENT NO. 58115
Wanda ...
COUNTY CLERK

CERTIFICATE OF SURVEYOR
STATE OF WYOMING
COUNTY OF NATRONA
By term of office expires January 1, 2011

I, WILLIAM R. FERHNER, A REGISTERED PROFESSIONAL LAND SURVEYOR, LICENSE NO. 5238, DO HEREBY CERTIFY THAT THIS PLAN WAS MADE FROM NOTES TAKEN DURING AN ACTUAL SURVEY MADE UNDER MY DIRECT SUPERVISION IN JANUARY, 2009, AND THAT THIS PLAN IS TO THE BEST OF MY KNOWLEDGE AND BELIEF CORRECT. THE PLOTTING AND COMPILING OF THIS PLAN WERE PERFORMED BY ME OR UNDER MY CLOSE PERSONAL SUPERVISION AND I AM NOT PROVIDING ANY WARRANTIES, EXPRESS OR IMPLIED, AS TO THE ACCURACY OF THE INFORMATION CONTAINED HEREIN. ALL BEING TRUE AND CORRECT TO THE BEST OF MY KNOWLEDGE AND BELIEF.

William R. Ferhner
WYOMING SURVEYOR

THE FOREGOING INSTRUMENT WAS ACKNOWLEDGED BEFORE ME BY WILLIAM R. FERHNER THIS 5TH DAY OF NOVEMBER, 2009.



BLACKMORE MARKETPLACE ADDITION NO. 2
LOTS 8 & 9

TO THE CITY OF CASPER, WYOMING
BEING A PORTION OF THE
NW/4 CORNER OF SECTION 7
T.33N., R.78W., 6TH P.M.
NATRONA COUNTY WYOMING

CERTIFICATE OF DEDICATION

STATE OF WYOMING }
COUNTY OF NATRONA }

THE UNDERSIGNED, FORWARD DEVELOPMENT, LLC, COUNTY CLERK, HEREBY CERTIFY THAT THE CITY AND TOWNSHIP OF THE DISTRICTS OF NATRONA COUNTY, WYOMING, HAS RECEIVED THE DEDICATION OF THE FOREGOING TRACT OF LAND TO THE CITY OF CASPER, WYOMING, AS SHOWN AS LOTS 8 & 9 OF BLACKMORE MARKETPLACE ADDITION NO. 2, TO THE CITY OF CASPER, WYOMING, AS SHOWN ON THIS PLAN. ALL BORDERS AND DISTANCES ARE SHOWN AS NOTED HEREON.

FORWARD DEVELOPMENT, LLC
P.O. BOX 3003
CASPER, WYOMING 82402

Nel A. Hammarly
NEL A. HAMMARLY - MANAGING PARTNER

Wanda ...
COUNTY CLERK

NOTES
1. ERROR OF CLOSURE EXCEEDS 1:171,355.
2. BASIS OF BEARINGS IS THE WYOMING STATE PLANE COPERNICAN SYSTEM, EAST CENTRAL ZONE, NAD 1983/86.
3. THE CONVERGENCE ANGLE AT THE POINT OF BEGINNING IS 00°14'02.28", AND THE COMBINED FACTOR IS 0.989790.

