

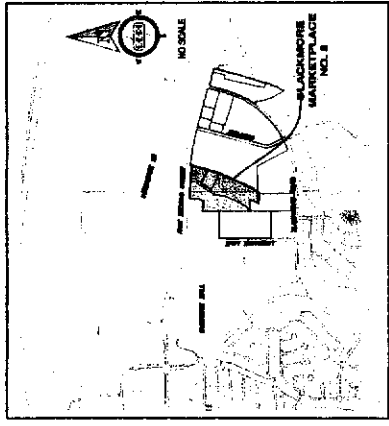
CERTIFICATE OF DEDICATION

STATE OF WYOMING
 COUNTY OF NATRONA

BLACKMORE MARKETPLACE ADDITION NO. 8
 BEING A PORTION OF THE
 NW1/4 SECTION 7, T.33N., R.76W., 6TH P.M.
 NATRONA COUNTY WYOMING
 FEBRUARY, 2013

BEING A PORTION OF THE
 NW1/4 SECTION 7, T.33N., R.76W., 6TH P.M.
 NATRONA COUNTY WYOMING
 FEBRUARY, 2013

BEING A PORTION OF THE
 NW1/4 SECTION 7, T.33N., R.76W., 6TH P.M.
 NATRONA COUNTY WYOMING
 FEBRUARY, 2013



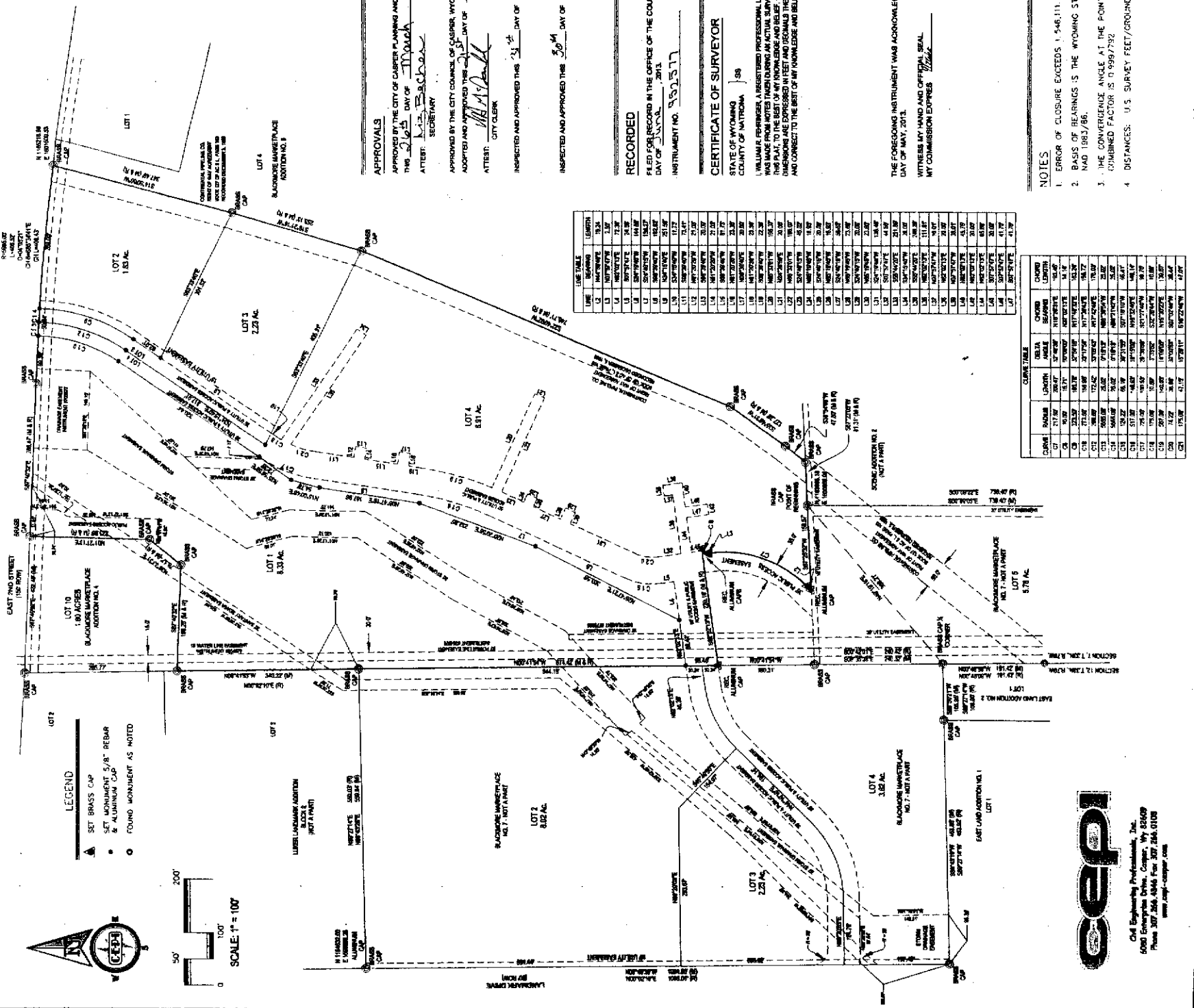
VICINITY MAP



APPROVED BY THE CITY OF CASPER PLANNING AND ZONING COMMISSION ON FEBRUARY 1, 2013.
 APPROVED BY THE CITY COUNCIL OF CASPER, WYOMING ON FEBRUARY 1, 2013.
 APPROVED BY THE COUNTY CLERK OF NATRONA COUNTY, WYOMING ON FEBRUARY 1, 2013.

SEAL OF THE CITY OF CASPER, WYOMING

SEAL OF NATRONA COUNTY, WYOMING



LINE TABLE

LINE	BEARING	LENGTH
L1	N 73° 05' 00" W	26.89
L2	S 73° 05' 00" E	26.89
L3	N 73° 05' 00" W	26.89
L4	S 73° 05' 00" E	26.89
L5	N 73° 05' 00" W	26.89
L6	S 73° 05' 00" E	26.89
L7	N 73° 05' 00" W	26.89
L8	S 73° 05' 00" E	26.89
L9	N 73° 05' 00" W	26.89
L10	S 73° 05' 00" E	26.89
L11	N 73° 05' 00" W	26.89
L12	S 73° 05' 00" E	26.89
L13	N 73° 05' 00" W	26.89
L14	S 73° 05' 00" E	26.89
L15	N 73° 05' 00" W	26.89
L16	S 73° 05' 00" E	26.89
L17	N 73° 05' 00" W	26.89
L18	S 73° 05' 00" E	26.89
L19	N 73° 05' 00" W	26.89
L20	S 73° 05' 00" E	26.89
L21	N 73° 05' 00" W	26.89
L22	S 73° 05' 00" E	26.89
L23	N 73° 05' 00" W	26.89
L24	S 73° 05' 00" E	26.89
L25	N 73° 05' 00" W	26.89
L26	S 73° 05' 00" E	26.89
L27	N 73° 05' 00" W	26.89
L28	S 73° 05' 00" E	26.89
L29	N 73° 05' 00" W	26.89
L30	S 73° 05' 00" E	26.89
L31	N 73° 05' 00" W	26.89
L32	S 73° 05' 00" E	26.89
L33	N 73° 05' 00" W	26.89
L34	S 73° 05' 00" E	26.89
L35	N 73° 05' 00" W	26.89
L36	S 73° 05' 00" E	26.89
L37	N 73° 05' 00" W	26.89
L38	S 73° 05' 00" E	26.89
L39	N 73° 05' 00" W	26.89
L40	S 73° 05' 00" E	26.89
L41	N 73° 05' 00" W	26.89
L42	S 73° 05' 00" E	26.89
L43	N 73° 05' 00" W	26.89
L44	S 73° 05' 00" E	26.89
L45	N 73° 05' 00" W	26.89
L46	S 73° 05' 00" E	26.89
L47	N 73° 05' 00" W	26.89
L48	S 73° 05' 00" E	26.89
L49	N 73° 05' 00" W	26.89
L50	S 73° 05' 00" E	26.89
L51	N 73° 05' 00" W	26.89
L52	S 73° 05' 00" E	26.89
L53	N 73° 05' 00" W	26.89
L54	S 73° 05' 00" E	26.89
L55	N 73° 05' 00" W	26.89
L56	S 73° 05' 00" E	26.89
L57	N 73° 05' 00" W	26.89
L58	S 73° 05' 00" E	26.89
L59	N 73° 05' 00" W	26.89
L60	S 73° 05' 00" E	26.89
L61	N 73° 05' 00" W	26.89
L62	S 73° 05' 00" E	26.89
L63	N 73° 05' 00" W	26.89
L64	S 73° 05' 00" E	26.89
L65	N 73° 05' 00" W	26.89
L66	S 73° 05' 00" E	26.89
L67	N 73° 05' 00" W	26.89
L68	S 73° 05' 00" E	26.89
L69	N 73° 05' 00" W	26.89
L70	S 73° 05' 00" E	26.89
L71	N 73° 05' 00" W	26.89
L72	S 73° 05' 00" E	26.89
L73	N 73° 05' 00" W	26.89
L74	S 73° 05' 00" E	26.89
L75	N 73° 05' 00" W	26.89
L76	S 73° 05' 00" E	26.89
L77	N 73° 05' 00" W	26.89
L78	S 73° 05' 00" E	26.89
L79	N 73° 05' 00" W	26.89
L80	S 73° 05' 00" E	26.89
L81	N 73° 05' 00" W	26.89
L82	S 73° 05' 00" E	26.89
L83	N 73° 05' 00" W	26.89
L84	S 73° 05' 00" E	26.89
L85	N 73° 05' 00" W	26.89
L86	S 73° 05' 00" E	26.89
L87	N 73° 05' 00" W	26.89
L88	S 73° 05' 00" E	26.89
L89	N 73° 05' 00" W	26.89
L90	S 73° 05' 00" E	26.89
L91	N 73° 05' 00" W	26.89
L92	S 73° 05' 00" E	26.89
L93	N 73° 05' 00" W	26.89
L94	S 73° 05' 00" E	26.89
L95	N 73° 05' 00" W	26.89
L96	S 73° 05' 00" E	26.89
L97	N 73° 05' 00" W	26.89
L98	S 73° 05' 00" E	26.89
L99	N 73° 05' 00" W	26.89
L100	S 73° 05' 00" E	26.89

CHORD TABLE

CHORD BEARING	CHORD LENGTH	CHORD AREA
S 73° 05' 00" E	26.89	1.00
N 73° 05' 00" W	26.89	1.00
S 73° 05' 00" E	26.89	1.00
N 73° 05' 00" W	26.89	1.00
S 73° 05' 00" E	26.89	1.00
N 73° 05' 00" W	26.89	1.00

cepi
 CEPI Engineering Professionals, Inc.
 5000 Enterprise Drive, Casper, WY 82409
 Phone 307.566.4846 Fax 307.566.0108
 www.cepi-casper.com

NOTES
 1. ERROR OF CLOSURE EXCEEDS 1:546,111.
 2. BASIS OF BEARINGS IS THE WYOMING STATE PLANE COORDINATE SYSTEM, EAST CENTRAL ZONE, NAD 1983/86.
 3. THE CONVERGENCE ANGLE AT THE POINT OF BEGINNING IS 0°43'53.893", AND THE COMBINED FACTOR IS 0.9997392
 4. DISTANCES: U.S. SURVEY FEET/GROUND