

CERTIFICATE OF DEDICATION

898871

STATE OF WYOMING COUNTY OF NATRONA

THE UNDERSIGNED, FORWARD DEVELOPMENT, LLC, DOES HEREBY CERTIFY THAT THEY ARE THE OWNERS AND PROPRIETORS OF THE FOLLOWING DESCRIBED PARCELS OF LAND SITUATE IN THE NW1/4, SW1/4, SW1/4 AND THE SW1/4 OF SECTION 7, T.33N., R.78W., 6TH P.M., NATRONA COUNTY, WYOMING, BEING MORE PARTICULARLY DESCRIBED AS FOLLOWS:

PARCEL #1: COMMENCING AT THE WEST 1/4 CORNER OF SAID SECTION 7, MONUMENTED BY A BRASS CAP;

THENCE SOUTH 50°00'00" ALONG THE WEST LINE OF SAID SECTION 7, A DISTANCE OF 240.00 FEET, TO THE NORTHWEST CORNER OF THE SAID SECTION 7; THENCE WEST 90°00'00" ALONG THE WEST LINE OF SAID SECTION 7, A DISTANCE OF 240.00 FEET, TO THE POINT OF BEGINNING, MONUMENTED BY A BRASS CAP;

THENCE NORTH 50°00'00" ALONG THE WEST LINE OF SAID SECTION 7, A DISTANCE OF 240.00 FEET, TO THE POINT OF BEGINNING, MONUMENTED BY A BRASS CAP;

THENCE SOUTH 50°00'00" ALONG THE WEST LINE OF SAID SECTION 7, A DISTANCE OF 240.00 FEET, TO THE POINT OF BEGINNING, MONUMENTED BY A BRASS CAP;

THENCE SOUTH 50°00'00" ALONG THE WEST LINE OF SAID SECTION 7, A DISTANCE OF 240.00 FEET, TO THE POINT OF BEGINNING, MONUMENTED BY A BRASS CAP;

THENCE SOUTH 50°00'00" ALONG THE WEST LINE OF SAID SECTION 7, A DISTANCE OF 240.00 FEET, TO THE POINT OF BEGINNING, MONUMENTED BY A BRASS CAP;

THENCE SOUTH 50°00'00" ALONG THE WEST LINE OF SAID SECTION 7, A DISTANCE OF 240.00 FEET, TO THE POINT OF BEGINNING, MONUMENTED BY A BRASS CAP;

THENCE SOUTH 50°00'00" ALONG THE WEST LINE OF SAID SECTION 7, A DISTANCE OF 240.00 FEET, TO THE POINT OF BEGINNING, MONUMENTED BY A BRASS CAP;

THENCE SOUTH 50°00'00" ALONG THE WEST LINE OF SAID SECTION 7, A DISTANCE OF 240.00 FEET, TO THE POINT OF BEGINNING, MONUMENTED BY A BRASS CAP;

THENCE SOUTH 50°00'00" ALONG THE WEST LINE OF SAID SECTION 7, A DISTANCE OF 240.00 FEET, TO THE POINT OF BEGINNING, MONUMENTED BY A BRASS CAP;

THENCE SOUTH 50°00'00" ALONG THE WEST LINE OF SAID SECTION 7, A DISTANCE OF 240.00 FEET, TO THE POINT OF BEGINNING, MONUMENTED BY A BRASS CAP;

THENCE SOUTH 50°00'00" ALONG THE WEST LINE OF SAID SECTION 7, A DISTANCE OF 240.00 FEET, TO THE POINT OF BEGINNING, MONUMENTED BY A BRASS CAP;

THENCE SOUTH 50°00'00" ALONG THE WEST LINE OF SAID SECTION 7, A DISTANCE OF 240.00 FEET, TO THE POINT OF BEGINNING, MONUMENTED BY A BRASS CAP;

THENCE SOUTH 50°00'00" ALONG THE WEST LINE OF SAID SECTION 7, A DISTANCE OF 240.00 FEET, TO THE POINT OF BEGINNING, MONUMENTED BY A BRASS CAP;

THENCE SOUTH 50°00'00" ALONG THE WEST LINE OF SAID SECTION 7, A DISTANCE OF 240.00 FEET, TO THE POINT OF BEGINNING, MONUMENTED BY A BRASS CAP;

THENCE SOUTH 50°00'00" ALONG THE WEST LINE OF SAID SECTION 7, A DISTANCE OF 240.00 FEET, TO THE POINT OF BEGINNING, MONUMENTED BY A BRASS CAP;

THENCE SOUTH 50°00'00" ALONG THE WEST LINE OF SAID SECTION 7, A DISTANCE OF 240.00 FEET, TO THE POINT OF BEGINNING, MONUMENTED BY A BRASS CAP;

THENCE SOUTH 50°00'00" ALONG THE WEST LINE OF SAID SECTION 7, A DISTANCE OF 240.00 FEET, TO THE POINT OF BEGINNING, MONUMENTED BY A BRASS CAP;

THENCE SOUTH 50°00'00" ALONG THE WEST LINE OF SAID SECTION 7, A DISTANCE OF 240.00 FEET, TO THE POINT OF BEGINNING, MONUMENTED BY A BRASS CAP;

THENCE SOUTH 50°00'00" ALONG THE WEST LINE OF SAID SECTION 7, A DISTANCE OF 240.00 FEET, TO THE POINT OF BEGINNING, MONUMENTED BY A BRASS CAP;

THENCE SOUTH 50°00'00" ALONG THE WEST LINE OF SAID SECTION 7, A DISTANCE OF 240.00 FEET, TO THE POINT OF BEGINNING, MONUMENTED BY A BRASS CAP;

THENCE SOUTH 50°00'00" ALONG THE WEST LINE OF SAID SECTION 7, A DISTANCE OF 240.00 FEET, TO THE POINT OF BEGINNING, MONUMENTED BY A BRASS CAP;

THENCE SOUTH 50°00'00" ALONG THE WEST LINE OF SAID SECTION 7, A DISTANCE OF 240.00 FEET, TO THE POINT OF BEGINNING, MONUMENTED BY A BRASS CAP;

THENCE SOUTH 50°00'00" ALONG THE WEST LINE OF SAID SECTION 7, A DISTANCE OF 240.00 FEET, TO THE POINT OF BEGINNING, MONUMENTED BY A BRASS CAP;

THENCE SOUTH 50°00'00" ALONG THE WEST LINE OF SAID SECTION 7, A DISTANCE OF 240.00 FEET, TO THE POINT OF BEGINNING, MONUMENTED BY A BRASS CAP;

THENCE SOUTH 50°00'00" ALONG THE WEST LINE OF SAID SECTION 7, A DISTANCE OF 240.00 FEET, TO THE POINT OF BEGINNING, MONUMENTED BY A BRASS CAP;

THENCE SOUTH 50°00'00" ALONG THE WEST LINE OF SAID SECTION 7, A DISTANCE OF 240.00 FEET, TO THE POINT OF BEGINNING, MONUMENTED BY A BRASS CAP;

THENCE SOUTH 50°00'00" ALONG THE WEST LINE OF SAID SECTION 7, A DISTANCE OF 240.00 FEET, TO THE POINT OF BEGINNING, MONUMENTED BY A BRASS CAP;

THENCE SOUTH 50°00'00" ALONG THE WEST LINE OF SAID SECTION 7, A DISTANCE OF 240.00 FEET, TO THE POINT OF BEGINNING, MONUMENTED BY A BRASS CAP;

THENCE SOUTH 50°00'00" ALONG THE WEST LINE OF SAID SECTION 7, A DISTANCE OF 240.00 FEET, TO THE POINT OF BEGINNING, MONUMENTED BY A BRASS CAP;

THENCE SOUTH 50°00'00" ALONG THE WEST LINE OF SAID SECTION 7, A DISTANCE OF 240.00 FEET, TO THE POINT OF BEGINNING, MONUMENTED BY A BRASS CAP;

THENCE SOUTH 50°00'00" ALONG THE WEST LINE OF SAID SECTION 7, A DISTANCE OF 240.00 FEET, TO THE POINT OF BEGINNING, MONUMENTED BY A BRASS CAP;

THENCE SOUTH 50°00'00" ALONG THE WEST LINE OF SAID SECTION 7, A DISTANCE OF 240.00 FEET, TO THE POINT OF BEGINNING, MONUMENTED BY A BRASS CAP;

THENCE SOUTH 50°00'00" ALONG THE WEST LINE OF SAID SECTION 7, A DISTANCE OF 240.00 FEET, TO THE POINT OF BEGINNING, MONUMENTED BY A BRASS CAP;

THENCE SOUTH 50°00'00" ALONG THE WEST LINE OF SAID SECTION 7, A DISTANCE OF 240.00 FEET, TO THE POINT OF BEGINNING, MONUMENTED BY A BRASS CAP;

THENCE SOUTH 50°00'00" ALONG THE WEST LINE OF SAID SECTION 7, A DISTANCE OF 240.00 FEET, TO THE POINT OF BEGINNING, MONUMENTED BY A BRASS CAP;

THENCE SOUTH 50°00'00" ALONG THE WEST LINE OF SAID SECTION 7, A DISTANCE OF 240.00 FEET, TO THE POINT OF BEGINNING, MONUMENTED BY A BRASS CAP;

THENCE SOUTH 50°00'00" ALONG THE WEST LINE OF SAID SECTION 7, A DISTANCE OF 240.00 FEET, TO THE POINT OF BEGINNING, MONUMENTED BY A BRASS CAP;

THENCE SOUTH 50°00'00" ALONG THE WEST LINE OF SAID SECTION 7, A DISTANCE OF 240.00 FEET, TO THE POINT OF BEGINNING, MONUMENTED BY A BRASS CAP;

THENCE SOUTH 50°00'00" ALONG THE WEST LINE OF SAID SECTION 7, A DISTANCE OF 240.00 FEET, TO THE POINT OF BEGINNING, MONUMENTED BY A BRASS CAP;

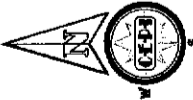
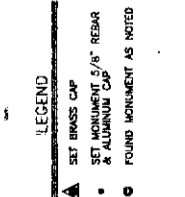
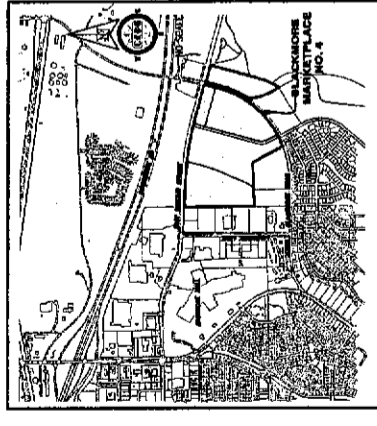
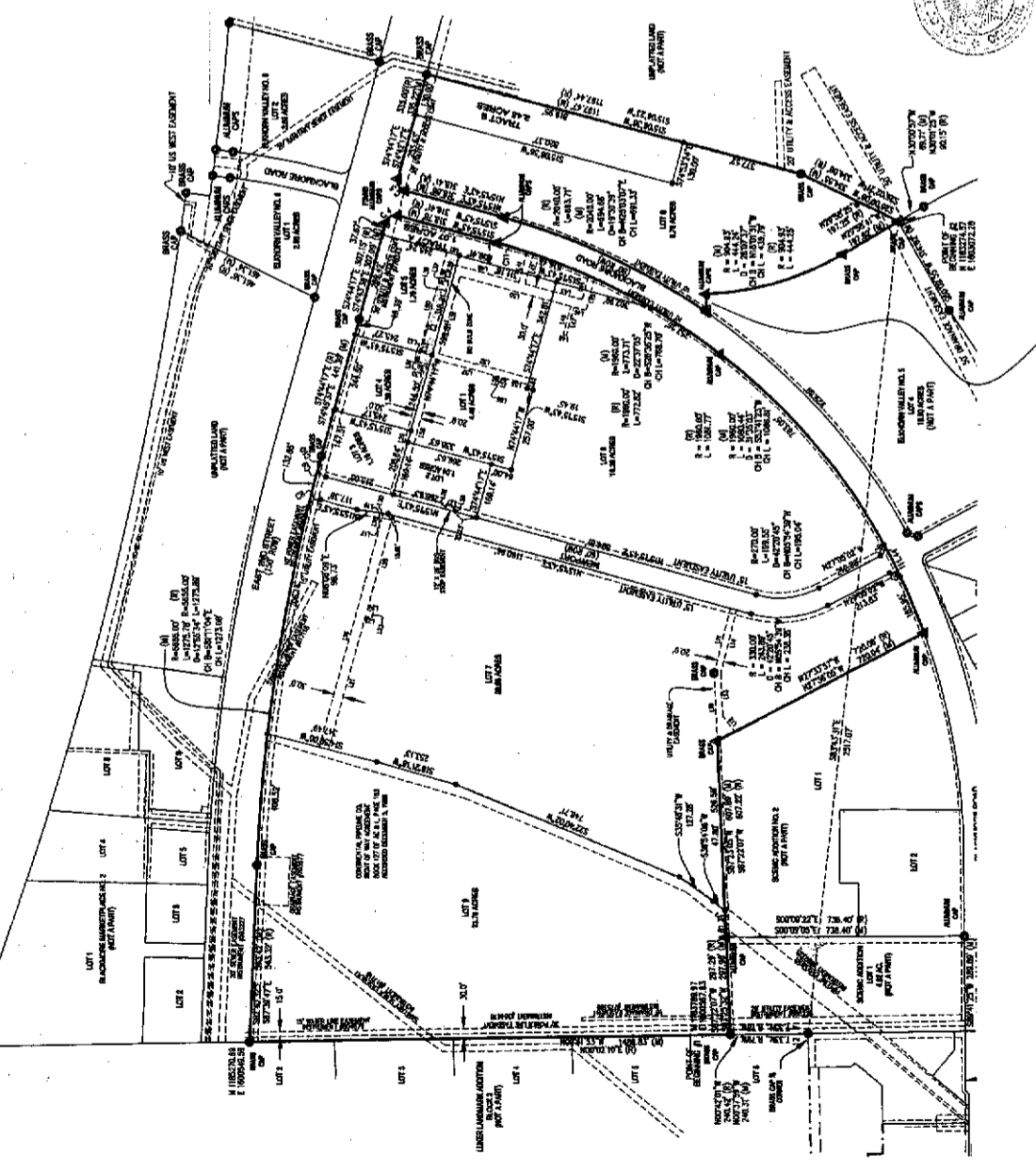
THENCE SOUTH 50°00'00" ALONG THE WEST LINE OF SAID SECTION 7, A DISTANCE OF 240.00 FEET, TO THE POINT OF BEGINNING, MONUMENTED BY A BRASS CAP;

THENCE SOUTH 50°00'00" ALONG THE WEST LINE OF SAID SECTION 7, A DISTANCE OF 240.00 FEET, TO THE POINT OF BEGINNING, MONUMENTED BY A BRASS CAP;

THENCE SOUTH 50°00'00" ALONG THE WEST LINE OF SAID SECTION 7, A DISTANCE OF 240.00 FEET, TO THE POINT OF BEGINNING, MONUMENTED BY A BRASS CAP;

Table with columns: CURVE, RADIUS, LENGTH, DELTA ANGLE, CHORD LENGTH, CHORD BEARING. Rows 01 through 07.

Table with columns: LINE, BEARING, LENGTH. Rows 01 through 152.



APPROVALS APPROVED BY THE CITY OF CASPER PLANNING AND ZONING COMMISSION OF CASPER, WYOMING THIS 21st DAY OF OCTOBER, 2010. ATTEST: [Signature] SECRETARY. APPROVED BY THE CITY COUNCIL OF CASPER, WYOMING BY ORDINANCE NO. 2010-20, DAILY PASSED, THIS 21st DAY OF OCTOBER, 2010. ATTEST: [Signature] MAYOR. APPROVED BY THE CITY ENGINEER: [Signature] CITY ENGINEER. APPROVED BY THE CITY SURVEYOR: [Signature] CITY SURVEYOR. INSPECTED AND APPROVED THIS 21st DAY OF OCTOBER, 2010. INSPECTED AND APPROVED THIS 21st DAY OF OCTOBER, 2010.

CERTIFICATE OF SURVEYOR STATE OF WYOMING COUNTY OF NATRONA WILLIAM R. FERRINGER, LICENSE NO. 10001, BEING THE SURVEYOR, DO HEREBY CERTIFY THAT THIS PLAT IS THE BEST OF MY KNOWLEDGE AND BELIEF, AND ACCORDING TO THE RECORDS AND SURVEY. ALL DIMENSIONS ARE EXPRESSED IN FEET AND DECIMALS THEREOF AND CORRECTED TO THE TRUE MEASUREMENT, BEING TRUE, AND CORRECT TO THE BEST OF MY KNOWLEDGE AND BELIEF. THE FOREGOING INSTRUMENT WAS ACKNOWLEDGED BEFORE ME BY WILLIAM R. FERRINGER THIS 21st DAY OF OCTOBER, 2010. WITNESS MY HAND AND OFFICIAL SEAL AT COMMISSION EXPIRES: JUNE 30, 2012. NOTARY PUBLIC. RECORDED IN THE OFFICE OF THE COUNTY CLERK OF NATRONA COUNTY, WYOMING THIS 21st DAY OF OCTOBER, 2010. INSTRUMENT NO. 898871. COUNTY CLERK. NOTES: 1. PARCEL #1: ERROR OF CLOSURE EXCEEDS 1:374,983. 2. PARCEL #2: ERROR OF CLOSURE EXCEEDS 1:139,519. 3. THE CONVERGENCE ANGLE AT THE SOUTHWEST CORNER OF PARCEL #1 IS 00°43'51.66\"/>



BLACKMORE MARKETPLACE ADDITION NO. 3 ELKHORN VALLEY ADDITION NO. 6, LOTS 3 & 4 LOT 3, SCENIC ADDITION AS VACATION AND REPLAT OF BLACKMORE MARKETPLACE ADDITION NO. 3 ELKHORN VALLEY ADDITION NO. 6, LOTS 3 & 4 TO THE CITY OF CASPER, WYOMING BEING A PORTION OF THE NW1/4, SW1/4, SW1/4 AND THE SW1/4 OF SECTION 7, T.33N., R.78W., 6TH P.M., NATRONA COUNTY WYOMING