

CERTIFICATE OF DEDICATION
STATE OF WYOMING } SS
COUNTY OF NATRONA

8939903
NATRONA COUNTY CLERK, BY
Maura V. Little, County Clerk
Aug 29, 2010 03:12:28 PM
Page: 3 of 3
City of Casper

THE UNDERSIGNED, FURNISHING THE FOLLOWING DESCRIBED PARCELS OF LAND, BEING PART OF THE P.M. NATRONA COUNTY, WYOMING, ALSO KNOWN AS LOTS 14A, 14B, 28A, 28B, BLOCK 2, BLACKMORE VISTA ADDITION TO THE CITY OF CASPER, BEING PART OF THE FOLLOWING COMMISSION AT THE WEST 1/4 CORNER OF SAID SECTION 7, MONUMENTED BY A BRASS CAP:

THENCE S17°30'00"E, A DISTANCE OF 251.33 FEET TO A POINT, ALSO BEING THE SOUTHWEST CORNER OF SAID LOT 22A, LOCATED ON THE NORTH LINE OF CENTER STREET, MONUMENTED BY A BRASS CAP;

THENCE S07°15'00"E, A DISTANCE OF 251.33 FEET TO A POINT, ALSO BEING THE NORTHWEST CORNER OF LOT 8, BLACKMORE VISTA ADDITION, MONUMENTED BY A BRASS CAP AND BEING THE POINT OF BEGINNING;

THENCE S07°15'00"E, A DISTANCE OF 251.33 FEET TO A POINT, ALSO BEING THE NORTHWEST CORNER OF LOT 8, BLACKMORE VISTA ADDITION, MONUMENTED BY A BRASS CAP, A DISTANCE OF 251.33 FEET TO A POINT, ALSO BEING THE NORTHWEST CORNER OF LOT 8, BLACKMORE VISTA ADDITION, MONUMENTED BY A BRASS CAP;

THENCE S07°15'00"E, A DISTANCE OF 251.33 FEET TO A POINT, ALSO BEING THE NORTHWEST CORNER OF LOT 8, BLACKMORE VISTA ADDITION, MONUMENTED BY A BRASS CAP, A DISTANCE OF 251.33 FEET TO A POINT, ALSO BEING THE NORTHWEST CORNER OF LOT 8, BLACKMORE VISTA ADDITION, MONUMENTED BY A BRASS CAP;

THENCE S07°15'00"E, A DISTANCE OF 251.33 FEET TO A POINT, ALSO BEING THE NORTHWEST CORNER OF LOT 8, BLACKMORE VISTA ADDITION, MONUMENTED BY A BRASS CAP, A DISTANCE OF 251.33 FEET TO A POINT, ALSO BEING THE NORTHWEST CORNER OF LOT 8, BLACKMORE VISTA ADDITION, MONUMENTED BY A BRASS CAP;

THENCE S07°15'00"E, A DISTANCE OF 251.33 FEET TO A POINT, ALSO BEING THE NORTHWEST CORNER OF LOT 8, BLACKMORE VISTA ADDITION, MONUMENTED BY A BRASS CAP, A DISTANCE OF 251.33 FEET TO A POINT, ALSO BEING THE NORTHWEST CORNER OF LOT 8, BLACKMORE VISTA ADDITION, MONUMENTED BY A BRASS CAP;

THENCE S07°15'00"E, A DISTANCE OF 251.33 FEET TO A POINT, ALSO BEING THE NORTHWEST CORNER OF LOT 8, BLACKMORE VISTA ADDITION, MONUMENTED BY A BRASS CAP, A DISTANCE OF 251.33 FEET TO A POINT, ALSO BEING THE NORTHWEST CORNER OF LOT 8, BLACKMORE VISTA ADDITION, MONUMENTED BY A BRASS CAP;

THENCE S07°15'00"E, A DISTANCE OF 251.33 FEET TO A POINT, ALSO BEING THE NORTHWEST CORNER OF LOT 8, BLACKMORE VISTA ADDITION, MONUMENTED BY A BRASS CAP, A DISTANCE OF 251.33 FEET TO A POINT, ALSO BEING THE NORTHWEST CORNER OF LOT 8, BLACKMORE VISTA ADDITION, MONUMENTED BY A BRASS CAP;

THENCE S07°15'00"E, A DISTANCE OF 251.33 FEET TO A POINT, ALSO BEING THE NORTHWEST CORNER OF LOT 8, BLACKMORE VISTA ADDITION, MONUMENTED BY A BRASS CAP, A DISTANCE OF 251.33 FEET TO A POINT, ALSO BEING THE NORTHWEST CORNER OF LOT 8, BLACKMORE VISTA ADDITION, MONUMENTED BY A BRASS CAP;

THENCE S07°15'00"E, A DISTANCE OF 251.33 FEET TO A POINT, ALSO BEING THE NORTHWEST CORNER OF LOT 8, BLACKMORE VISTA ADDITION, MONUMENTED BY A BRASS CAP, A DISTANCE OF 251.33 FEET TO A POINT, ALSO BEING THE NORTHWEST CORNER OF LOT 8, BLACKMORE VISTA ADDITION, MONUMENTED BY A BRASS CAP;

THENCE S07°15'00"E, A DISTANCE OF 251.33 FEET TO A POINT, ALSO BEING THE NORTHWEST CORNER OF LOT 8, BLACKMORE VISTA ADDITION, MONUMENTED BY A BRASS CAP, A DISTANCE OF 251.33 FEET TO A POINT, ALSO BEING THE NORTHWEST CORNER OF LOT 8, BLACKMORE VISTA ADDITION, MONUMENTED BY A BRASS CAP;

THENCE S07°15'00"E, A DISTANCE OF 251.33 FEET TO A POINT, ALSO BEING THE NORTHWEST CORNER OF LOT 8, BLACKMORE VISTA ADDITION, MONUMENTED BY A BRASS CAP, A DISTANCE OF 251.33 FEET TO A POINT, ALSO BEING THE NORTHWEST CORNER OF LOT 8, BLACKMORE VISTA ADDITION, MONUMENTED BY A BRASS CAP;

THENCE S07°15'00"E, A DISTANCE OF 251.33 FEET TO A POINT, ALSO BEING THE NORTHWEST CORNER OF LOT 8, BLACKMORE VISTA ADDITION, MONUMENTED BY A BRASS CAP, A DISTANCE OF 251.33 FEET TO A POINT, ALSO BEING THE NORTHWEST CORNER OF LOT 8, BLACKMORE VISTA ADDITION, MONUMENTED BY A BRASS CAP;

THENCE S07°15'00"E, A DISTANCE OF 251.33 FEET TO A POINT, ALSO BEING THE NORTHWEST CORNER OF LOT 8, BLACKMORE VISTA ADDITION, MONUMENTED BY A BRASS CAP, A DISTANCE OF 251.33 FEET TO A POINT, ALSO BEING THE NORTHWEST CORNER OF LOT 8, BLACKMORE VISTA ADDITION, MONUMENTED BY A BRASS CAP;

THENCE S07°15'00"E, A DISTANCE OF 251.33 FEET TO A POINT, ALSO BEING THE NORTHWEST CORNER OF LOT 8, BLACKMORE VISTA ADDITION, MONUMENTED BY A BRASS CAP, A DISTANCE OF 251.33 FEET TO A POINT, ALSO BEING THE NORTHWEST CORNER OF LOT 8, BLACKMORE VISTA ADDITION, MONUMENTED BY A BRASS CAP;

THENCE S07°15'00"E, A DISTANCE OF 251.33 FEET TO A POINT, ALSO BEING THE NORTHWEST CORNER OF LOT 8, BLACKMORE VISTA ADDITION, MONUMENTED BY A BRASS CAP, A DISTANCE OF 251.33 FEET TO A POINT, ALSO BEING THE NORTHWEST CORNER OF LOT 8, BLACKMORE VISTA ADDITION, MONUMENTED BY A BRASS CAP;

THENCE S07°15'00"E, A DISTANCE OF 251.33 FEET TO A POINT, ALSO BEING THE NORTHWEST CORNER OF LOT 8, BLACKMORE VISTA ADDITION, MONUMENTED BY A BRASS CAP, A DISTANCE OF 251.33 FEET TO A POINT, ALSO BEING THE NORTHWEST CORNER OF LOT 8, BLACKMORE VISTA ADDITION, MONUMENTED BY A BRASS CAP;

THENCE S07°15'00"E, A DISTANCE OF 251.33 FEET TO A POINT, ALSO BEING THE NORTHWEST CORNER OF LOT 8, BLACKMORE VISTA ADDITION, MONUMENTED BY A BRASS CAP, A DISTANCE OF 251.33 FEET TO A POINT, ALSO BEING THE NORTHWEST CORNER OF LOT 8, BLACKMORE VISTA ADDITION, MONUMENTED BY A BRASS CAP;

THENCE S07°15'00"E, A DISTANCE OF 251.33 FEET TO A POINT, ALSO BEING THE NORTHWEST CORNER OF LOT 8, BLACKMORE VISTA ADDITION, MONUMENTED BY A BRASS CAP, A DISTANCE OF 251.33 FEET TO A POINT, ALSO BEING THE NORTHWEST CORNER OF LOT 8, BLACKMORE VISTA ADDITION, MONUMENTED BY A BRASS CAP;

THENCE S07°15'00"E, A DISTANCE OF 251.33 FEET TO A POINT, ALSO BEING THE NORTHWEST CORNER OF LOT 8, BLACKMORE VISTA ADDITION, MONUMENTED BY A BRASS CAP, A DISTANCE OF 251.33 FEET TO A POINT, ALSO BEING THE NORTHWEST CORNER OF LOT 8, BLACKMORE VISTA ADDITION, MONUMENTED BY A BRASS CAP;

THENCE S07°15'00"E, A DISTANCE OF 251.33 FEET TO A POINT, ALSO BEING THE NORTHWEST CORNER OF LOT 8, BLACKMORE VISTA ADDITION, MONUMENTED BY A BRASS CAP, A DISTANCE OF 251.33 FEET TO A POINT, ALSO BEING THE NORTHWEST CORNER OF LOT 8, BLACKMORE VISTA ADDITION, MONUMENTED BY A BRASS CAP;

THENCE S07°15'00"E, A DISTANCE OF 251.33 FEET TO A POINT, ALSO BEING THE NORTHWEST CORNER OF LOT 8, BLACKMORE VISTA ADDITION, MONUMENTED BY A BRASS CAP, A DISTANCE OF 251.33 FEET TO A POINT, ALSO BEING THE NORTHWEST CORNER OF LOT 8, BLACKMORE VISTA ADDITION, MONUMENTED BY A BRASS CAP;

THENCE S07°15'00"E, A DISTANCE OF 251.33 FEET TO A POINT, ALSO BEING THE NORTHWEST CORNER OF LOT 8, BLACKMORE VISTA ADDITION, MONUMENTED BY A BRASS CAP, A DISTANCE OF 251.33 FEET TO A POINT, ALSO BEING THE NORTHWEST CORNER OF LOT 8, BLACKMORE VISTA ADDITION, MONUMENTED BY A BRASS CAP;

THENCE S07°15'00"E, A DISTANCE OF 251.33 FEET TO A POINT, ALSO BEING THE NORTHWEST CORNER OF LOT 8, BLACKMORE VISTA ADDITION, MONUMENTED BY A BRASS CAP, A DISTANCE OF 251.33 FEET TO A POINT, ALSO BEING THE NORTHWEST CORNER OF LOT 8, BLACKMORE VISTA ADDITION, MONUMENTED BY A BRASS CAP;

THENCE S07°15'00"E, A DISTANCE OF 251.33 FEET TO A POINT, ALSO BEING THE NORTHWEST CORNER OF LOT 8, BLACKMORE VISTA ADDITION, MONUMENTED BY A BRASS CAP, A DISTANCE OF 251.33 FEET TO A POINT, ALSO BEING THE NORTHWEST CORNER OF LOT 8, BLACKMORE VISTA ADDITION, MONUMENTED BY A BRASS CAP;

THENCE S07°15'00"E, A DISTANCE OF 251.33 FEET TO A POINT, ALSO BEING THE NORTHWEST CORNER OF LOT 8, BLACKMORE VISTA ADDITION, MONUMENTED BY A BRASS CAP, A DISTANCE OF 251.33 FEET TO A POINT, ALSO BEING THE NORTHWEST CORNER OF LOT 8, BLACKMORE VISTA ADDITION, MONUMENTED BY A BRASS CAP;

THENCE S07°15'00"E, A DISTANCE OF 251.33 FEET TO A POINT, ALSO BEING THE NORTHWEST CORNER OF LOT 8, BLACKMORE VISTA ADDITION, MONUMENTED BY A BRASS CAP, A DISTANCE OF 251.33 FEET TO A POINT, ALSO BEING THE NORTHWEST CORNER OF LOT 8, BLACKMORE VISTA ADDITION, MONUMENTED BY A BRASS CAP;

THENCE S07°15'00"E, A DISTANCE OF 251.33 FEET TO A POINT, ALSO BEING THE NORTHWEST CORNER OF LOT 8, BLACKMORE VISTA ADDITION, MONUMENTED BY A BRASS CAP, A DISTANCE OF 251.33 FEET TO A POINT, ALSO BEING THE NORTHWEST CORNER OF LOT 8, BLACKMORE VISTA ADDITION, MONUMENTED BY A BRASS CAP;

THENCE S07°15'00"E, A DISTANCE OF 251.33 FEET TO A POINT, ALSO BEING THE NORTHWEST CORNER OF LOT 8, BLACKMORE VISTA ADDITION, MONUMENTED BY A BRASS CAP, A DISTANCE OF 251.33 FEET TO A POINT, ALSO BEING THE NORTHWEST CORNER OF LOT 8, BLACKMORE VISTA ADDITION, MONUMENTED BY A BRASS CAP;

THENCE S07°15'00"E, A DISTANCE OF 251.33 FEET TO A POINT, ALSO BEING THE NORTHWEST CORNER OF LOT 8, BLACKMORE VISTA ADDITION, MONUMENTED BY A BRASS CAP, A DISTANCE OF 251.33 FEET TO A POINT, ALSO BEING THE NORTHWEST CORNER OF LOT 8, BLACKMORE VISTA ADDITION, MONUMENTED BY A BRASS CAP;

THENCE S07°15'00"E, A DISTANCE OF 251.33 FEET TO A POINT, ALSO BEING THE NORTHWEST CORNER OF LOT 8, BLACKMORE VISTA ADDITION, MONUMENTED BY A BRASS CAP, A DISTANCE OF 251.33 FEET TO A POINT, ALSO BEING THE NORTHWEST CORNER OF LOT 8, BLACKMORE VISTA ADDITION, MONUMENTED BY A BRASS CAP;

THENCE S07°15'00"E, A DISTANCE OF 251.33 FEET TO A POINT, ALSO BEING THE NORTHWEST CORNER OF LOT 8, BLACKMORE VISTA ADDITION, MONUMENTED BY A BRASS CAP, A DISTANCE OF 251.33 FEET TO A POINT, ALSO BEING THE NORTHWEST CORNER OF LOT 8, BLACKMORE VISTA ADDITION, MONUMENTED BY A BRASS CAP;

THENCE S07°15'00"E, A DISTANCE OF 251.33 FEET TO A POINT, ALSO BEING THE NORTHWEST CORNER OF LOT 8, BLACKMORE VISTA ADDITION, MONUMENTED BY A BRASS CAP, A DISTANCE OF 251.33 FEET TO A POINT, ALSO BEING THE NORTHWEST CORNER OF LOT 8, BLACKMORE VISTA ADDITION, MONUMENTED BY A BRASS CAP;

THENCE S07°15'00"E, A DISTANCE OF 251.33 FEET TO A POINT, ALSO BEING THE NORTHWEST CORNER OF LOT 8, BLACKMORE VISTA ADDITION, MONUMENTED BY A BRASS CAP, A DISTANCE OF 251.33 FEET TO A POINT, ALSO BEING THE NORTHWEST CORNER OF LOT 8, BLACKMORE VISTA ADDITION, MONUMENTED BY A BRASS CAP;

THENCE S07°15'00"E, A DISTANCE OF 251.33 FEET TO A POINT, ALSO BEING THE NORTHWEST CORNER OF LOT 8, BLACKMORE VISTA ADDITION, MONUMENTED BY A BRASS CAP, A DISTANCE OF 251.33 FEET TO A POINT, ALSO BEING THE NORTHWEST CORNER OF LOT 8, BLACKMORE VISTA ADDITION, MONUMENTED BY A BRASS CAP;

THENCE S07°15'00"E, A DISTANCE OF 251.33 FEET TO A POINT, ALSO BEING THE NORTHWEST CORNER OF LOT 8, BLACKMORE VISTA ADDITION, MONUMENTED BY A BRASS CAP, A DISTANCE OF 251.33 FEET TO A POINT, ALSO BEING THE NORTHWEST CORNER OF LOT 8, BLACKMORE VISTA ADDITION, MONUMENTED BY A BRASS CAP;

THENCE S07°15'00"E, A DISTANCE OF 251.33 FEET TO A POINT, ALSO BEING THE NORTHWEST CORNER OF LOT 8, BLACKMORE VISTA ADDITION, MONUMENTED BY A BRASS CAP, A DISTANCE OF 251.33 FEET TO A POINT, ALSO BEING THE NORTHWEST CORNER OF LOT 8, BLACKMORE VISTA ADDITION, MONUMENTED BY A BRASS CAP;

THENCE S07°15'00"E, A DISTANCE OF 251.33 FEET TO A POINT, ALSO BEING THE NORTHWEST CORNER OF LOT 8, BLACKMORE VISTA ADDITION, MONUMENTED BY A BRASS CAP, A DISTANCE OF 251.33 FEET TO A POINT, ALSO BEING THE NORTHWEST CORNER OF LOT 8, BLACKMORE VISTA ADDITION, MONUMENTED BY A BRASS CAP;

THENCE S07°15'00"E, A DISTANCE OF 251.33 FEET TO A POINT, ALSO BEING THE NORTHWEST CORNER OF LOT 8, BLACKMORE VISTA ADDITION, MONUMENTED BY A BRASS CAP, A DISTANCE OF 251.33 FEET TO A POINT, ALSO BEING THE NORTHWEST CORNER OF LOT 8, BLACKMORE VISTA ADDITION, MONUMENTED BY A BRASS CAP;

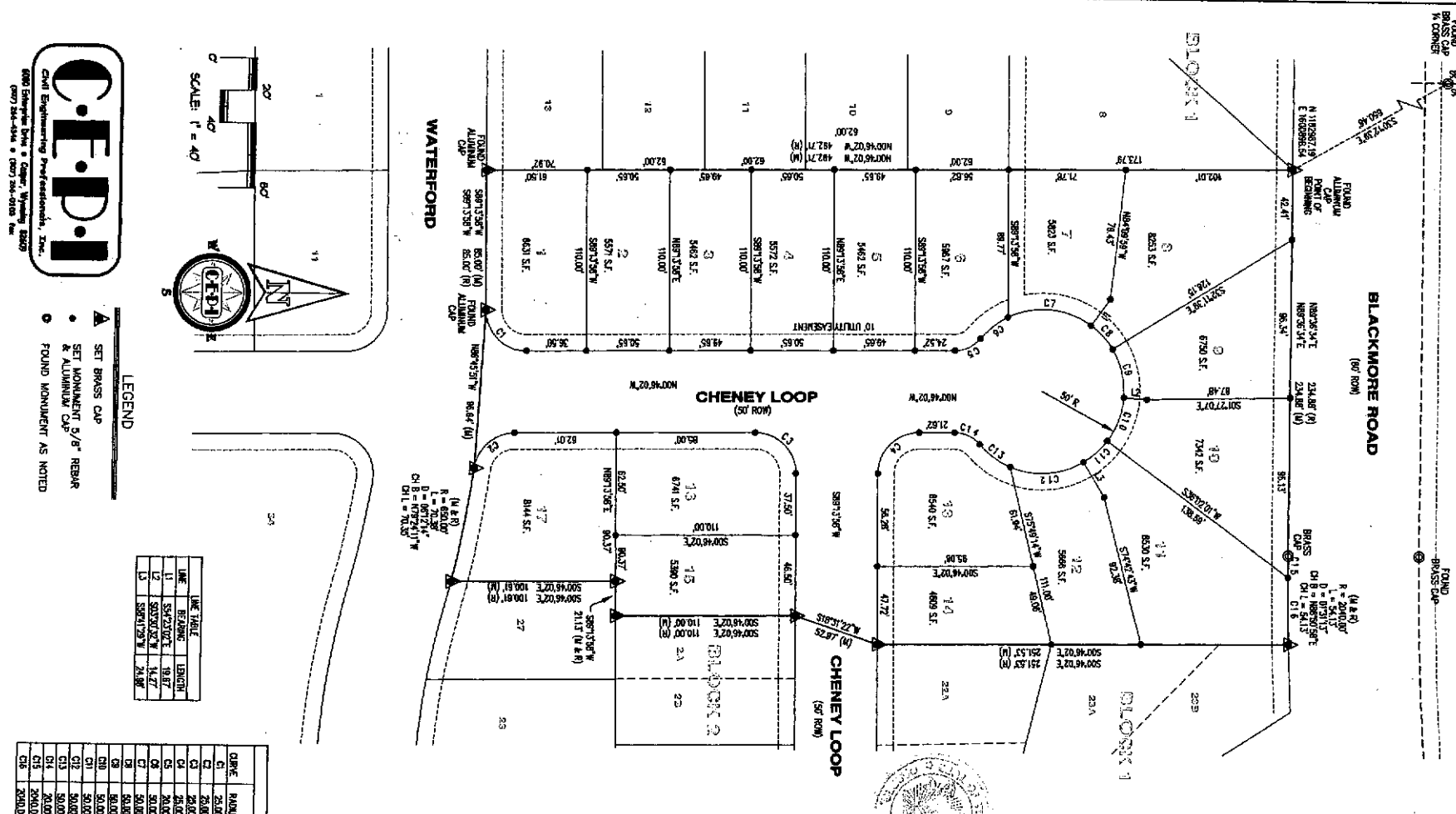
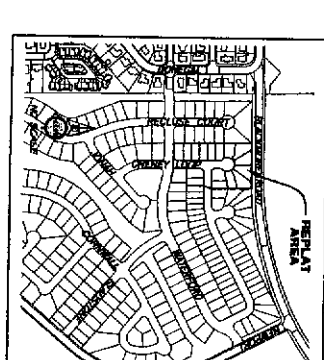
THENCE S07°15'00"E, A DISTANCE OF 251.33 FEET TO A POINT, ALSO BEING THE NORTHWEST CORNER OF LOT 8, BLACKMORE VISTA ADDITION, MONUMENTED BY A BRASS CAP, A DISTANCE OF 251.33 FEET TO A POINT, ALSO BEING THE NORTHWEST CORNER OF LOT 8, BLACKMORE VISTA ADDITION, MONUMENTED BY A BRASS CAP;

THENCE S07°15'00"E, A DISTANCE OF 251.33 FEET TO A POINT, ALSO BEING THE NORTHWEST CORNER OF LOT 8, BLACKMORE VISTA ADDITION, MONUMENTED BY A BRASS CAP, A DISTANCE OF 251.33 FEET TO A POINT, ALSO BEING THE NORTHWEST CORNER OF LOT 8, BLACKMORE VISTA ADDITION, MONUMENTED BY A BRASS CAP;

THENCE S07°15'00"E, A DISTANCE OF 251.33 FEET TO A POINT, ALSO BEING THE NORTHWEST CORNER OF LOT 8, BLACKMORE VISTA ADDITION, MONUMENTED BY A BRASS CAP, A DISTANCE OF 251.33 FEET TO A POINT, ALSO BEING THE NORTHWEST CORNER OF LOT 8, BLACKMORE VISTA ADDITION, MONUMENTED BY A BRASS CAP;

THENCE S07°15'00"E, A DISTANCE OF 251.33 FEET TO A POINT, ALSO BEING THE NORTHWEST CORNER OF LOT 8, BLACKMORE VISTA ADDITION, MONUMENTED BY A BRASS CAP, A DISTANCE OF 251.33 FEET TO A POINT, ALSO BEING THE NORTHWEST CORNER OF LOT 8, BLACKMORE VISTA ADDITION, MONUMENTED BY A BRASS CAP;

THENCE S07°15'00"E, A DISTANCE OF 251.33 FEET TO A POINT, ALSO BEING THE NORTHWEST CORNER OF LOT 8, BLACKMORE VISTA ADDITION, MONUMENTED BY A BRASS CAP, A DISTANCE OF 251.33 FEET TO A POINT, ALSO BEING THE NORTHWEST CORNER OF LOT 8, BLACKMORE VISTA ADDITION, MONUMENTED BY A BRASS CAP;



APPROVALS

APPROVED BY THE CITY OF CASPER PLANNING AND ZONING COMMISSION OF CASPER, WYOMING
THIS 20th DAY OF MAY, 2010.
ATTEST: *Paula Anderson* SECRETARY
Eric Felt CHAIRMAN

APPROVED BY THE CITY COUNCIL OF CASPER, WYOMING BY RESOLUTION NO. LD-10, DULY PASSED,
ADOPTED AND APPROVED THIS 21st DAY OF MAY, 2010.
ATTEST: *Michelle* CITY CLERK

INSPECTED AND APPROVED THIS 21st DAY OF August, 2010.
CITY ENGINEER *Andrew S. Deaton*

INSPECTED AND APPROVED THIS 21st DAY OF August, 2010.
CITY SUPERVISOR *Michelle*

RECORDED
FILED FOR RECORD IN THE OFFICE OF THE COUNTY CLERK OF NATRONA COUNTY, WYOMING THIS
DAY OF August, 2010.
INSTRUMENT NO. 8939903
Rebecca Wills COUNTY CLERK

NOTES
1. ERROR OF CLOSURE EXCEEDS 1:1,472,830.
2. BASIS OF BEARINGS IS THE WYOMING STATE PLANE COORDINATE SYSTEM, EAST CENTRAL ZONE, NAD 1983/96, CITY OF CASPER DATUM.
3. THE CONVERGENCE ANGLE AT THE NORTHWEST CORNER OF THE PARCEL IS 0°43'53.963", AND THE CORRECTION FACTOR IS 0.9997814.

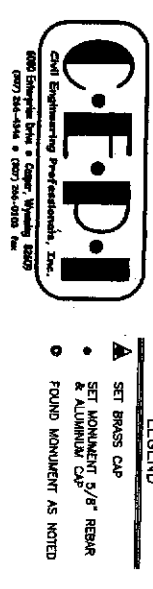
CERTIFICATE OF SURVEYOR
STATE OF WYOMING)
COUNTY OF NATRONA) SS
I, WILLIAM R. FERHINGER, A REGISTERED PROFESSIONAL LAND SURVEYOR, LICENSE NO. 5524, DO HEREBY
CERTIFY THAT THIS PLAT WAS MADE FROM NOTES TAKEN DURING AN ACTUAL SURVEY MADE UNDER MY
PERSONAL SUPERVISION IN APRIL, 2010, AND THAT THIS PLAT, TO THE BEST OF MY KNOWLEDGE AND
BELIEF, CORRECTLY AND ACCURATELY REPRESENTS SAID SURVEY. ALL DIMENSIONS ARE EXPRESSED
IN FEET AND DECIMALS THEREOF, AND ANGLES ARE EXPRESSED IN DEGREES, MINUTES AND SECONDS
CORRECT TO THE BEST OF MY KNOWLEDGE AND BELIEF.

THE FOREGOING INSTRUMENT WAS ACKNOWLEDGED BEFORE ME BY WILLIAM R. FERHINGER THIS 01st
DAY OF JULY, 2010.
WITNESS MY HAND AND OFFICIAL SEAL,
MY COMMISSION EXPIRES June 1, 2011.
Deborah NOTARY PUBLIC

LEGEND

- ▲ SET BRASS CAP
- SET MONUMENT 5/8" REBAR
- SET ALUMINUM CAP
- FOUND MONUMENT AS NOTED

LINE	BEARING	LENGTH
1	S89°21'00"W	14.87
2	S89°21'00"W	21.88
3	S89°21'00"W	21.88
4	S89°21'00"W	21.88
5	S89°21'00"W	21.88



VACATION AND REPLAT OF
LOTS 14A - 21B, BLOCK 1 & LOTS 1A, 1B, 28A & 28B, BLOCK 2
BLACKMORE VISTA ADDITION
AS
BLACKMORE VISTA ADDITION NO. 3
TO THE CITY OF CASPER, WYOMING
BEING A PORTION OF THE
NW/4SW/4 OF SECTION 7
T.33N., R.78W., 6TH P.M.
NATRONA COUNTY WYOMING