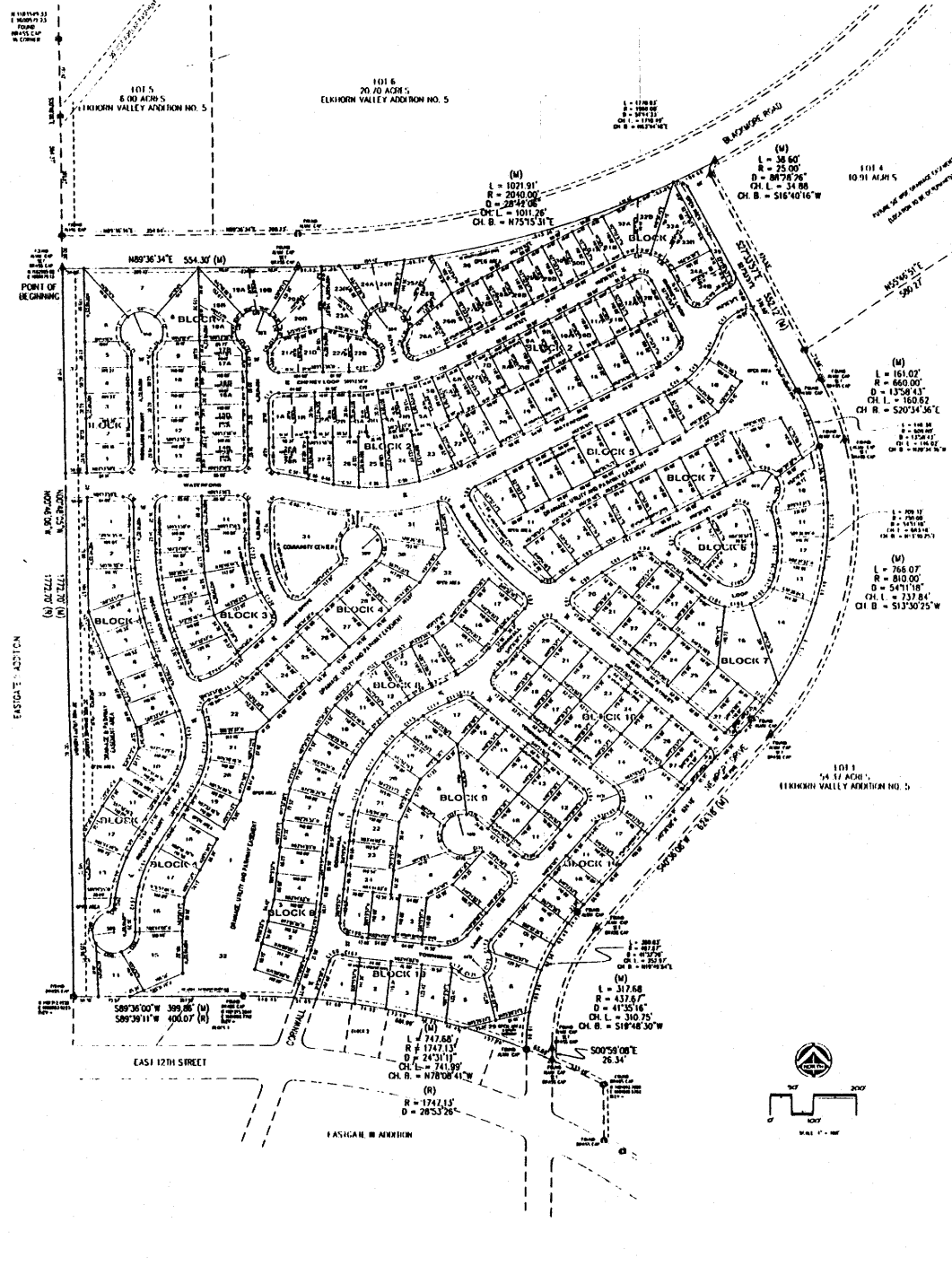


#748-A

Replat of Lot 2 Elk Horn Valley Addition No. 5
 as
 Blackmore Vista Addition
 Plat No. 2-22-95 Instrument 074227

CURVE TABLE

Station	Curve Data	Station	Curve Data	Station	Curve Data
100+00	L = 100.00 R = 200.00 D = 200.00 Ch.L. = 100.00 Ch.B. = 175.00	100+50	L = 100.00 R = 200.00 D = 200.00 Ch.L. = 100.00 Ch.B. = 175.00	101+00	L = 100.00 R = 200.00 D = 200.00 Ch.L. = 100.00 Ch.B. = 175.00



- LEGEND**
- SET BRASS CAP
 - SET MONUMENT 5/8" PLUMB & ATTACHED CAP
 - FRAMED MONUMENT AS NOTED

776279

REPLAT OF
 LOT 2, ELK HORN VALLEY ADDITION NO. 5
 AS
 BLACKMORE VISTA ADDITION

TO THE CITY OF CASPER, WYOMING
 BEING A PORTION OF THE
 S.W. 1/4 SECTION 7
 T.33N. R. 27W. G4EPM
 NATRONA COUNTY WYOMING.
 SHEET 1 OF 7
 PLSWSD 04 21 05



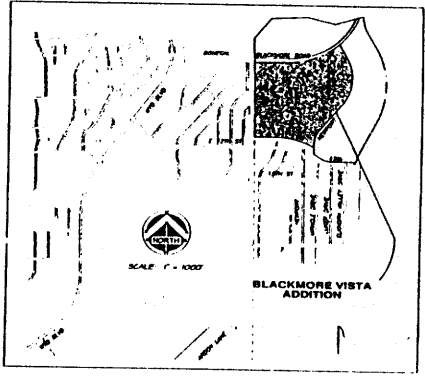
2025 04 21 05

CERTIFICATE OF DEDICATION

STATE OF WYOMING
COUNTY OF NATRONA

THE UNDERSIGNED PARTIES, HALL, MANAGING PARTNER OF BLACKMORE VISTA, INC., DO HEREBY CERTIFY THAT THE PLAN AND DIMENSIONS AND THE POINTS OF BEGINNING AND THE POINTS OF TERMINATION OF THE PLAT ARE CORRECT AND ACCURATE AND THAT THE PLAT IS A TRUE AND CORRECT REPRESENTATION OF THE LAND AS SHOWN ON THE PLAT AND THAT THE PLAT IS A TRUE AND CORRECT REPRESENTATION OF THE LAND AS SHOWN ON THE PLAT AND THAT THE PLAT IS A TRUE AND CORRECT REPRESENTATION OF THE LAND AS SHOWN ON THE PLAT.

THE UNDERSIGNED PARTIES, HALL, MANAGING PARTNER OF BLACKMORE VISTA, INC., DO HEREBY CERTIFY THAT THE PLAN AND DIMENSIONS AND THE POINTS OF BEGINNING AND THE POINTS OF TERMINATION OF THE PLAT ARE CORRECT AND ACCURATE AND THAT THE PLAT IS A TRUE AND CORRECT REPRESENTATION OF THE LAND AS SHOWN ON THE PLAT AND THAT THE PLAT IS A TRUE AND CORRECT REPRESENTATION OF THE LAND AS SHOWN ON THE PLAT AND THAT THE PLAT IS A TRUE AND CORRECT REPRESENTATION OF THE LAND AS SHOWN ON THE PLAT.



IN WITNESS WHEREOF, I, the undersigned, have hereunto set my hand and official seal at Casper, Wyoming, this 22nd day of August, 2005.

WILLIAM R. FEINBERG
NOTARY PUBLIC

RECORDED
FILED FOR RECORD IN THE OFFICE OF THE COUNTY CLERK OF NATRONA COUNTY, WYOMING, THIS 23rd DAY OF September, 2005.
INSTRUMENT NO. 776229

Mary Ann Colwell
COUNTY CLERK

APPROVED BY THE CITY OF CASPER IN ACCORDANCE WITH THE CITY CHARTER OF CASPER, WYOMING, THIS 22nd DAY OF August, 2005.
ATTEST: *[Signature]*
CITY CLERK

APPROVED BY THE CITY ENGINEER OF CASPER, WYOMING, THIS 22nd DAY OF August, 2005.
ATTEST: *[Signature]*
CITY ENGINEER

APPROVED AND APPROVED THIS 7th DAY OF September, 2005.
ATTEST: *[Signature]*
CITY ENGINEER

APPROVED AND APPROVED THIS 15th DAY OF September, 2005.
ATTEST: *[Signature]*
CITY ENGINEER

APPROVED AND APPROVED THIS 21st DAY OF September, 2005.
ATTEST: *[Signature]*
CITY ENGINEER

- NOTES
1. ERROR OF CLOSURE EXCEPTS 1:2,982,500
 2. BASIS OF BEARINGS IS THE WYOMING STATE PLANE COORDINATE SYSTEM, EAST CENTRAL ZONE, NAD 1983/86.
 3. THE CONVERGENCE ANGLE AT THE WEST 1/4 CORNER OF SECTION 7 IS 00°43'51.130", AND THE COMBINATION SCALE FACTOR IS 0.99978.
 4. A 10' WIDE UTILITY EASEMENT SHALL BE PROVIDED ALONG THE FRONT OF ALL LOTS AS SHOWN ON THE PLAT.

CERTIFICATE OF SURVEY
STATE OF WYOMING
COUNTY OF NATRONA

I, WILLIAM R. FEINBERG, A REGISTERED PROFESSIONAL LAND SURVEYOR, LICENSE NO. 5528, DO HEREBY CERTIFY THAT THIS PLAT WAS MADE FROM NOTES TAKEN DURING AN ACTUAL SURVEY MADE UNDER MY DIRECT SUPERVISION IN MARCH, 2005, AND THAT THIS PLAT, TO THE BEST OF MY KNOWLEDGE AND BELIEF, CORRECTLY AND ACCURATELY REPRESENTS SAID SURVEY. ALL DIMENSIONS ARE GIVEN IN FEET AND DECIMALS THEREOF AND COURSES REFERRED TO THE TRUE MERIDIAN. ALL BEING TRUE AND CORRECT TO THE BEST OF MY KNOWLEDGE AND BELIEF.

THE FOREGOING INSTRUMENT WAS ACKNOWLEDGED BEFORE ME BY WILLIAM R. FEINBERG THIS 22nd DAY OF AUGUST, 2005.
WITNESS MY HAND AND OFFICIAL SEAL.
MY COMMISSION EXPIRES 08/31/2010.

WILLIAM R. FEINBERG
NOTARY PUBLIC

REPLAT OF
LOT 2, ELKHORN VALLEY ADDITION NO. 5
AS
BLACKMORE VISTA ADDITION
TO THE CITY OF CASPER, WYOMING
BEING A PORTION OF THE
SW1/4 OF SECTION 7
T.33N., R.77W., 6TH P.M.
NATRONA COUNTY WYOMING
SHEET 2 OF 2
REVISED: 04-21-05

