

**CERTIFICATE OF DEDICATION**

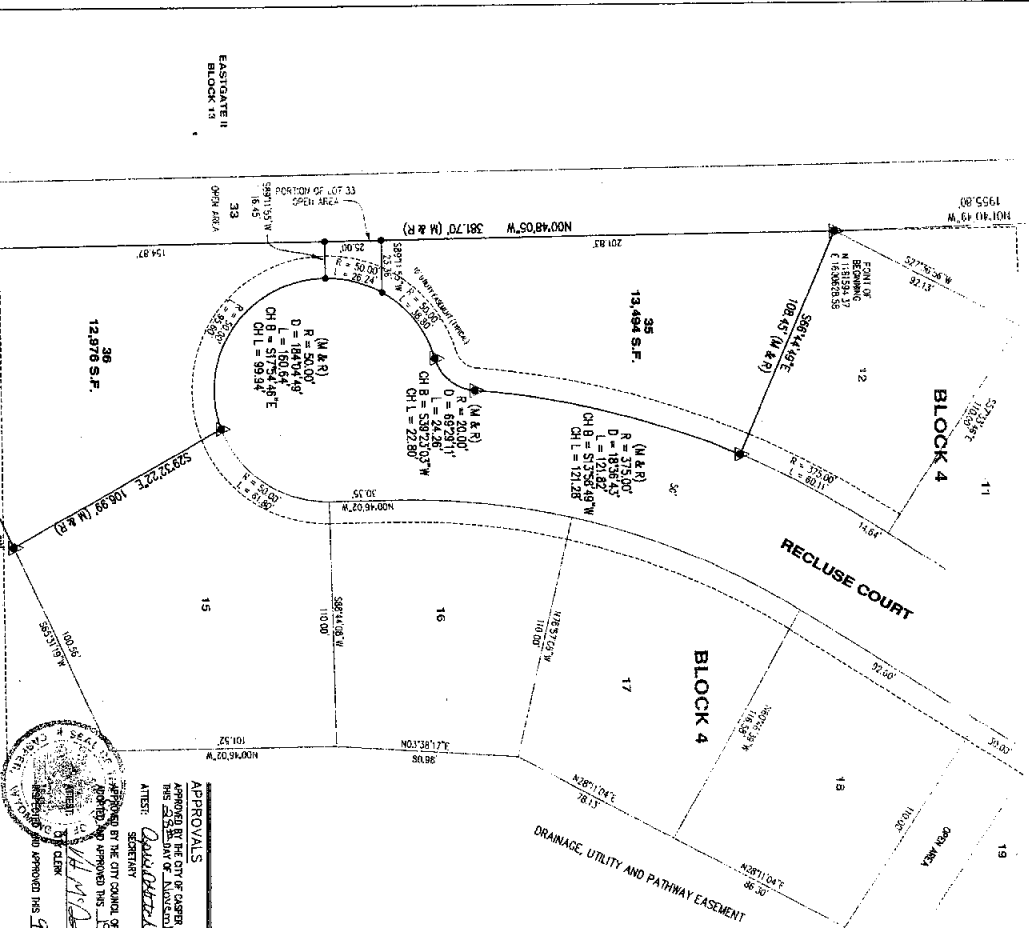
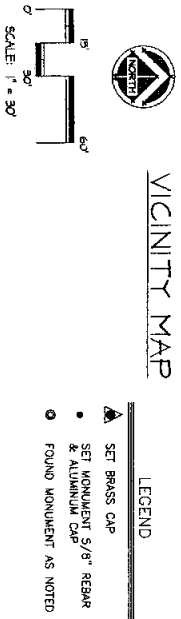
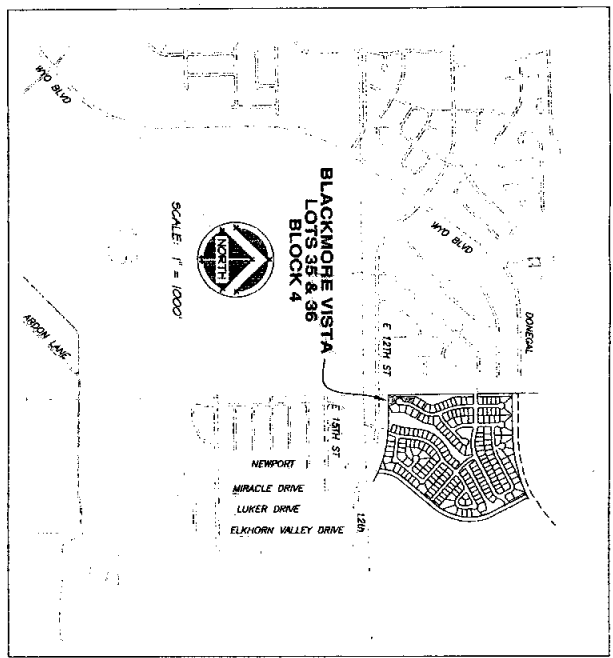
STATE OF WYOMING } SS  
 COUNTY OF NATRONA

10/14/2008

813742

WYOMING COUNTY CLERK, NATRONA COUNTY  
 Office 310 S. 28th St., Natrona, WY 82401  
 Phone 307.237.2121 Fax 307.237.2122

THE UNDERSIGNED, BLACKMORE HOMES, INC., DOES HEREBY CERTIFY THAT THEY ARE THE OWNERS AND PROPRIETORS OF THE FOLLOWING DESCRIBED PARCELS OF LAND, A PORTION OF LAND STATE IN THE SW 1/4 OF SECTION 7, T.33N., R.78W., BLACKMORE VISTA ADDITION, TO THE CITY OF CASPER, BEING MORE PARTICULARLY DESCRIBED AS FOLLOWS:



**APPROVALS**

APPROVED BY THE CITY OF CASPER PLANNING AND ZONING COMMISSIONER OF CASPER, WYOMING  
 THIS 23rd DAY OF November, 2008.

ATTEST: *Donna Dethlefsen* Secretary

APPROVED BY THE CITY COUNCIL OF CASPER, WYOMING BY RESOLUTION NO. 2008-218, PASSED  
 AND APPROVED THIS 23rd DAY OF December, 2008.

APPROVED BY THE CITY CLERK  
 THIS 23rd DAY OF December, 2008.

APPROVED BY THE CITY ENGINEER  
 THIS 23rd DAY OF December, 2008.

**CERTIFICATE OF SURVEYOR**

STATE OF WYOMING } SS  
 COUNTY OF NATRONA

I, WILLIAM R. SPINBERG, A REGISTERED PROFESSIONAL LAND SURVEYOR, LICENSE NO. 5529, DO HEREBY CERTIFY THAT THIS PLAT WAS MADE FROM NOTES TAKEN DURING AN ACTUAL SURVEY MADE UNDER MY DIRECT SUPERVISION IN OCTOBER, 2008, AND THAT THIS PLAT IS THE BEST OF MY KNOWLEDGE AND BELIEF IN ACCORDANCE WITH THE REQUIREMENTS OF THE WYOMING SURVEYING ACT AND THE WYOMING PROFESSIONAL LAND SURVEYOR ACT. ALL BEING TRUE AND CORRECT TO THE BEST OF MY KNOWLEDGE AND BELIEF.

THE FOREGOING INSTRUMENT WAS ACKNOWLEDGED BEFORE ME BY WILLIAM R. SPINBERG THIS 19th DAY OF January, 2007.

WITNESS MY HAND AND OFFICIAL SEAL  
 AT CASPER, WYOMING  
 BY COMMISSIONER SPINBERG

*William R. Spinberg*  
 LAND SURVEYOR

**RECORDED**

FILED FOR RECORD IN THE OFFICE OF THE COUNTY CLERK OF NATRONA COUNTY, WYOMING THIS 19th DAY OF January, 2007.

INSTRUMENT NO. 813740

*Russell White*  
 COUNTY CLERK

**NOTES**

1. ERROR OF CLOSURE EXCEEDS 1:18,248.

2. BASIS OF BEARING IS THE WYOMING STATE PLANE COORDINATE SYSTEM - EAST CENTRAL ZONE, AND 1983/86.

3. POINT OF BEGINNING: CONFORMANCE ANGLE = 00°45'51.148" COMPASS FACTOR = 0.999746.

**BLACKMORE VISTA ADDITION, LOTS 35 & 36, BLOCK 4**

TO THE CITY OF CASPER, WYOMING

BEING A PORTION OF THE SW 1/4 OF SECTION 7 AND 19A/96.

T.33N., R.78W., 6TH P.M.

NATRONA COUNTY WYOMING

**REPLAT OF LOTS 13 & 14, & A PORTION OF LOT 33 BLOCK 4 BLACKMORE VISTA ADDITION AS**

BLACKMORE HOMES, INC.  
 333 SOUTH BEECH STREET  
 CASPER, WYOMING 82501

*George Brock*  
 PRESIDENT

THE FOREGOING INSTRUMENT WAS ACKNOWLEDGED BEFORE ME BY GEORGE BROCK, THIS 19th DAY OF January, 2007.

*William R. Spinberg*  
 WYOMING SURVEYOR AND OFFICIAL SEAL

AT COMMISSIONER SPINBERG'S OFFICE PUBLIC 10/14/2008

