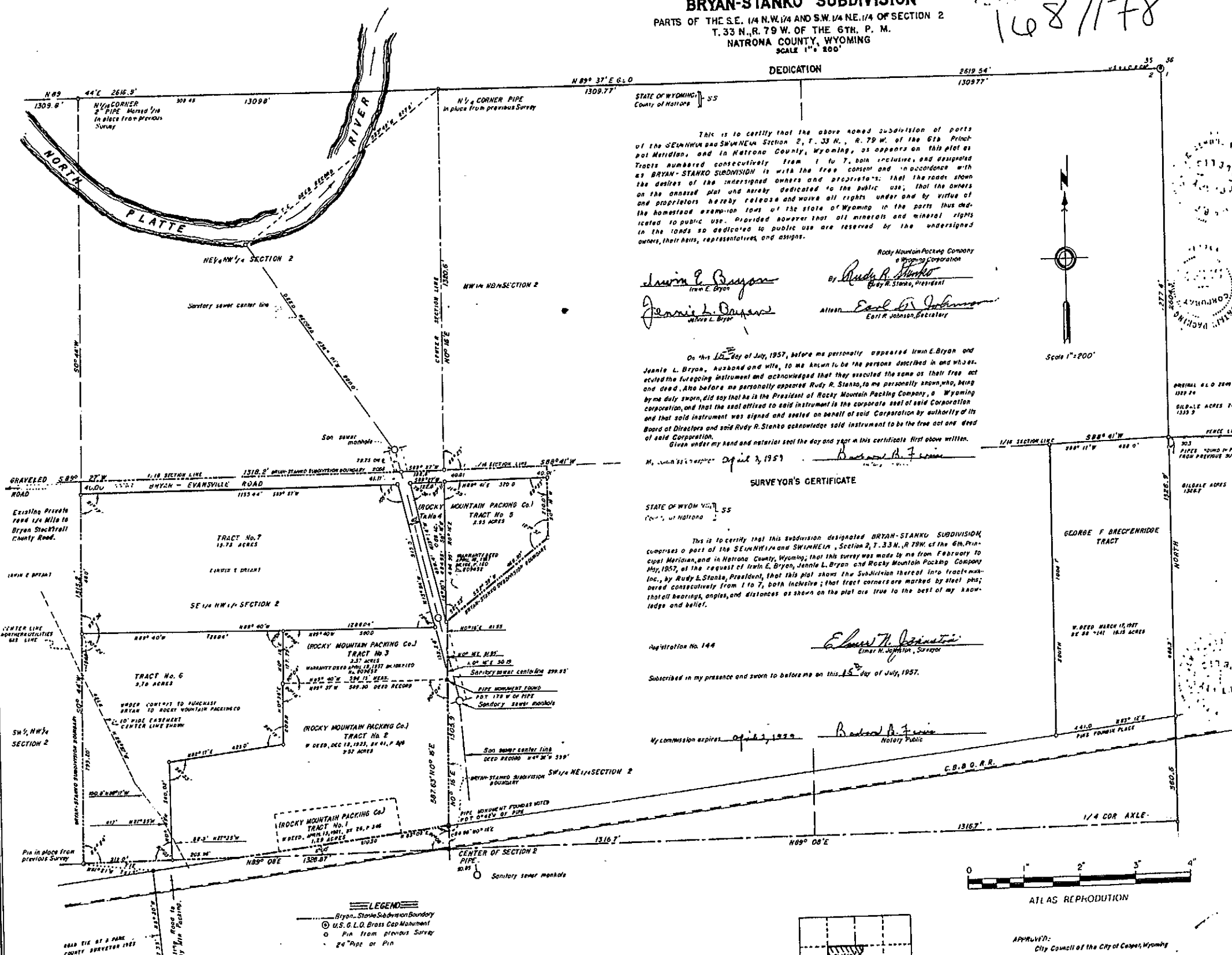


MAP OF  
**BRYAN-STANKO SUBDIVISION**  
 PARTS OF THE S.E. 1/4 N.W. 1/4 AND S.W. 1/4 NE. 1/4 OF SECTION 2  
 T. 33 N., R. 79 W. OF THE 6TH. P. M.  
 NATRONA COUNTY, WYOMING  
 SCALE 1" = 200'

168/178  
 Folded 3  
 275



This is to certify that the above named subdivision of parts of the S.E. 1/4 N.W. 1/4 and S.W. 1/4 NE. 1/4 of the 6th Principal Meridian, and in Natrona County, Wyoming, as appears on this plat as Tracts numbered consecutively from 1 to 7, both inclusive, and designated as BRYAN-STANKO SUBDIVISION is with the free consent and in accordance with the desires of the undersigned owners and proprietors; that the roads shown on the annexed plat and hereby dedicated to the public use; that the owners and proprietors hereby release and waive all rights under and by virtue of the homestead exemption laws of the state of Wyoming in the parts thus dedicated to public use. Provided however that all minerals and mineral rights in the lands so dedicated to public use are reserved by the undersigned owners, their heirs, representatives, and assigns.

Rocky Mountain Packing Company  
 a Wyoming Corporation  
 By Rudy R. Stanko  
 Rudy R. Stanko, President  
 Attest Earl R. Johnson  
 Earl R. Johnson, Secretary

On this 12th day of July, 1957, before me personally appeared Irwin E. Bryan and Jennie L. Bryan, husband and wife, to me known to be the persons described in and whose executed the foregoing instrument and acknowledged that they executed the same as their free act and deed. Also before me personally appeared Rudy R. Stanko, to me personally known, who, being by me duly sworn, did say that he is the President of Rocky Mountain Packing Company, a Wyoming corporation, and that the seal affixed to said instrument is the corporate seal of said Corporation and that said instrument was signed and sealed on behalf of said Corporation by authority of its Board of Directors and said Rudy R. Stanko acknowledge said instrument to be the true act and deed of said Corporation.  
 Given under my hand and material seal the day and year in this certificate first above written.  
 My Commission expires April 2, 1957

**SURVEYOR'S CERTIFICATE**  
 STATE OF WYOMING ss  
 I, Edward H. Johnston,  
 Surveyor

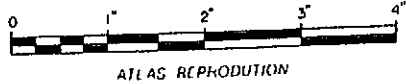
This is to certify that this subdivision designated BRYAN-STANKO SUBDIVISION comprises a part of the S.E. 1/4 N.W. 1/4 and S.W. 1/4 NE. 1/4 of the 6th Principal Meridian, and in Natrona County, Wyoming; that this survey was made by me from February to May, 1957, at the request of Irwin E. Bryan, Jennie L. Bryan and Rocky Mountain Packing Company Inc., by Rudy R. Stanko, President, that this plat shows the Subdivision thereof into tracts numbered consecutively from 1 to 7, both inclusive; that tract corners are marked by steel pins; that all bearings, angles, and distances as shown on the plat are true to the best of my knowledge and belief.

Registration No. 144  
 Subscribed in my presence and sworn to before me on this 12th day of July, 1957.  
 My Commission expires April 2, 1959  
Edward H. Johnston  
 Edward H. Johnston, Surveyor

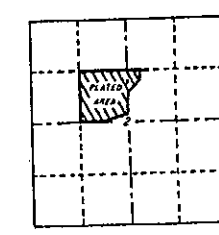
APPROVED: Albert M. Zwill  
 County Surveyor

APPROVED:  
 Board of County Commissioners of Natrona County, Wyoming  
W.C. McCallister  
 Chairman  
Earl R. Johnson  
 County Clerk

APPROVED:  
 City Council of the City of Casper, Wyoming  
Tommy Nicholas  
 Mayor  
Harold Chapman  
 President of Council  
 Dated August 12, 1957



ATLAS REPRODUCTION



- LEGEND**
- Bryan-Stanko Subdivision Boundary
  - ⊙ U.S. G.L.O. Brass Cap Monument
  - P.M. from previous Survey
  - 2" Pipe or Pin

954  
 100

106

