

MINOR BOUNDARY ADJUSTMENT
OF
LOT 1 & LOT 2A, BLOCK 37
BUTLER HEIGHTS ADDITION

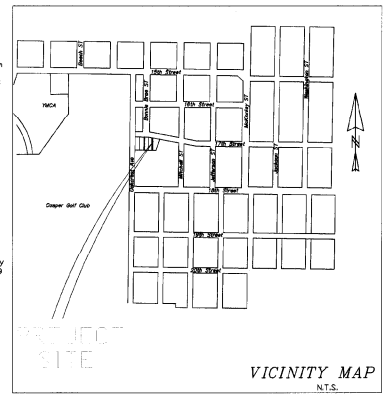
TO BECOME
LOT 1A & LOT 2B, BLOCK 37,
BUTLER HEIGHTS ADDITION
CITY OF CASPER, WYOMING

12/15/2020 10:23:40 AM
Page: 1
1093819
NATRONA COUNTY CLERK
TREC DIST #3
RECORDS
CITY OF CASPER

SURVEYOR'S CERTIFICATE

STATE OF WYOMING) ss
COUNTY OF NATRONA)

I, Richard T. Boyle, A Professional Land Surveyor, License No. 2333, do hereby certify that this plat was made from notes taken during an actual survey made under my direct supervision in May 2019, and this plat, to the best of my knowledge and belief, correctly and accurately represents said survey. All dimensions are expressed in feet and decimals thereof. Courses are referred to the Wyoming State Plane Coordinate System, each control zone, NAD 1983/88, City of Casper GIS System all being true and correct to the best of my knowledge and belief.



The foregoing instrument was acknowledged before me by Richard Boyle this 3rd day of November, AD, 2019. Witness my hand and official seal.



Notary Public Karl L. Priel
My Commission Expires 03/31/2022

CERTIFICATE OF DEDICATION

STATE OF WYOMING) ss
COUNTY OF NATRONA)

The undersigned CLIFFORD BARTON LOUNDAGIN, does hereby certify that he is the owner and proprietor in the following designated Minor Adjustment Plat creating two newly configured Lots within Lot 1 and Lot 2A, Block 37, Butler Heights Addition (Instrument No. 1865067 and Instrument No. 1072750) designated as LOT 1A and LOT 2B, BLOCK 37, BUTLER HEIGHTS ADDITION, situate within the NW1/4 of Section 15, T30N, R79W of the Sixth Principal Meridian, Natrona County, Wyoming, being more particularly described as follows:

Commencing at the northeast corner of lot 1, said corner is monumented with a bent rebar, THE POINT OF BEGINNING. Thence S18°40'19"W a distance of 132.73 to a point monumented by aluminum cap; thence N89°23'08"W a distance of 30.00 feet to a point monumented by aluminum cap; thence N89°23'08"W a distance of 50.00 feet to a point monumented by aluminum cap; thence N0°38'00"E a distance of 147.79 to a point monumented by aluminum cap; thence S75°15'57"E a distance of 51.02 feet to a point monumented by aluminum cap; thence S75°15'57"E a distance of 71.56 feet to the point of beginning.

All utility easements, as designated on the plat are hereby dedicated to the public and private utility companies for the purpose of installing, repairing, reinstalling, replacing and maintaining sewer lines, water lines, gas lines, electric lines, telephone lines, cable television lines and other forms and types of public utilities now or hereafter generally utilized by the public.

CLIFFORD BARTON LOUNDAGIN
4640 E. 24th ST
Casper, WY 82509

Clifford Barton Loundagin
CLIFFORD BARTON LOUNDAGIN - OWNER

APPROVALS

This plat approved by the Community Development Director this 15th day of December, 2020.

His Becha
Community Development Director

Inspected and Approved this 15th day of December, 2020, AD, by the City Engineer of Casper, Wyoming.

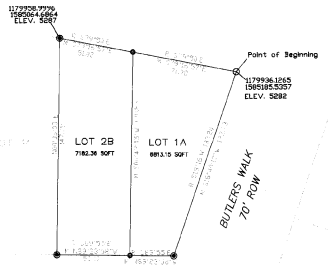
[Signature]
City Engineer

FIND PLAN	
LOT 1A & 2B, BLOCK 37, BUTLER HEIGHTS ADDITION	
PREPARED BY	RECORDED BY
CLIFFORD B. LOUNDAGIN	SHIRLEY M. HARRIS
12/15/2020	12/15/2020
1093819	1093819
1093819	1093819



17th Street
60' ROW

BONNIE BRAE ST.
80' ROW



SUMMARY
TOTAL LOTS = 2
AREA 13,993.12 SF
R.O.V. AREA N/A
CIRCUIT #2

- NOTES
1. Error of closure exceeds 1/46,000.
 2. Basis of Bearing is Wyoming State Plane Coordinate System, East Central NAD 1983/88.
 3. Distances: U.S. Survey Foot
 4. Convergence Angle for Northeast corner: 00°41'28.624"
 5. Combined Scale Factor for Northeast corner: 999747

The foregoing instrument was acknowledged before me by CLIFFORD BARTON LOUNDAGIN this 4th day of December, AD, 2019. Witness my hand and official seal.

Clifford Barton Loundagin
Notary Public
My Commission Expires 03/31/2022



- LEGEND
- FOUND 5/8" REBAR WITH SURVEY CAP
 - SET 24" LONG 5/8" REBAR WITH ALUMINUM SURVEY CAP MARKED "RLS 2333"
 - FOUND 5/8" BENT REBAR AND REPLACED WITH ALUMINUM SURVEY CAP MARKED "RLS 2333"