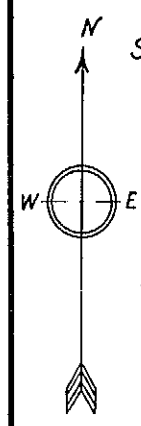


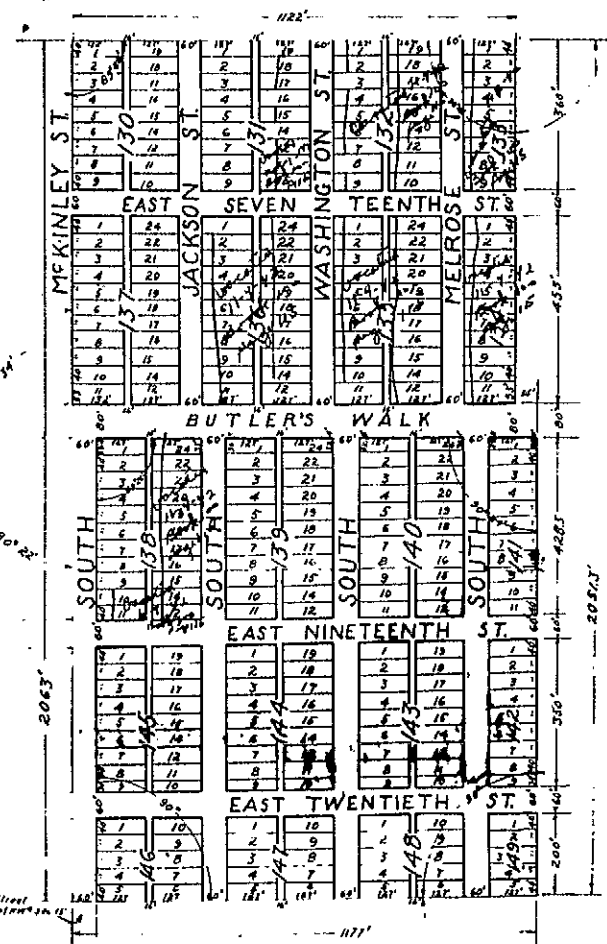
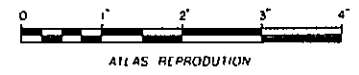
331

BUTLER'S ADDITION

TO THE CITY OF CASPER,
NATRONA COUNTY, STATE OF WYOMING



SCALE-1 inch = 200 feet



THE STATE OF WYOMING }
County of Natrona }
This is to certify that the above subdivision shown hereon as part of the East Half (E 1/2) of the Northwest Quarter (NW 1/4) of Section Fifteen (15) Township Thirty-three (33) North; Range Seventy-nine (79) West of the Sixth Principal Meridian, as appears on this plat as blocks number 130 to 149, both inclusive, each block containing lots numbered as shown, said subdivision being known as "BUTLER'S ADDITION TO THE CITY OF CASPER, NATRONA COUNTY STATE OF WYOMING, is with the free consent and in accordance with the desires of the undersigned owner and proprietor, The Mountain Realty and Title Corporation, a corporation duly organized and existing under and by virtue of the laws of the State of Wyoming

In Witness Whereof the said The Mountain Realty and Title Corporation has caused these presents to be signed and its corporate seal to be duly affixed by authority of its Board of Directors this 9th day of June, A.D. 1921

In presence of
E.R. Schiff
John Goodrich

The Mountain Realty and Title Corporation
by *M. Elma Butler-Cromer*
Its President
Attest *John Goodrich*
Its Secretary

THE STATE OF WYOMING }
County of Natrona }
On this 9th day of June A.D. 1921 before me appeared M. Elma Butler-Cromer and J.M. Cromer, to me personally known, who being by me duly sworn, did say that they are the president and secretary respectively of The Mountain Realty and Title Corporation, a Wyoming corporation, and that said instrument was signed and sealed in behalf of said corporation by authority of its Board of Directors, and said M. Elma Butler-Cromer and J.M. Cromer acknowledged said instrument to be the free act and deed of said corporation.

Given under my hand and Notarial Seal this 9th day of June A.D. 1921

My Commission expires Jan. 9, 1923
E.R. Schiff
Notary Public
81929

29/329

THE STATE OF WYOMING }
County of Natrona }
On this 9th day of June A.D. 1921, before me, personally appeared Millin M. Butler, of lawful age and to me personally known, who being by me first duly sworn, did depose and say and certify as follows, to-wit:

That said Millin M. Butler is and was during all times herein set forth a Surveyor duly licensed as such under the laws of the State of Wyoming;
That the foregoing map, plat and subdivision was made with reference to known monuments by giving and indicating the dimensions and length and breadth of the subdivision and the breadth and courses of all the streets and alleys established in said subdivision from notes taken during an actual survey made by me on May 20, 1921, at the request of The Mountain Realty and Title Corporation, a corporation duly organized and existing under and by virtue of the laws of the State of Wyoming, and that said map and plat correctly represents and accurately describes the said subdivision of a portion of the E 1/2 of the NW 1/4 of Sec. 15 T. 33 N.; R. 79 W. of the 6th Principal Meridian, said subdivision to be known as "Butler's Addition to the City of Casper, Natrona County, State of Wyoming" into blocks, lots, streets and alleys as actually staked on the ground and tied to Government corner on East line of said section 15, block corners of South Addition and to apparent South Boundary of Kenwood Addition. Unless otherwise indicated lots are parallel to streets. Block corners are "Hubs" and the lot corners are 2"x2" stakes. North and south lines have more weight than east and west lines.

Subscribed in my presence and sworn to before me this 9th day of June A.D. 1921
E.R. Schiff
Notary Public
My Commission Expires Jan. 9, 1923

