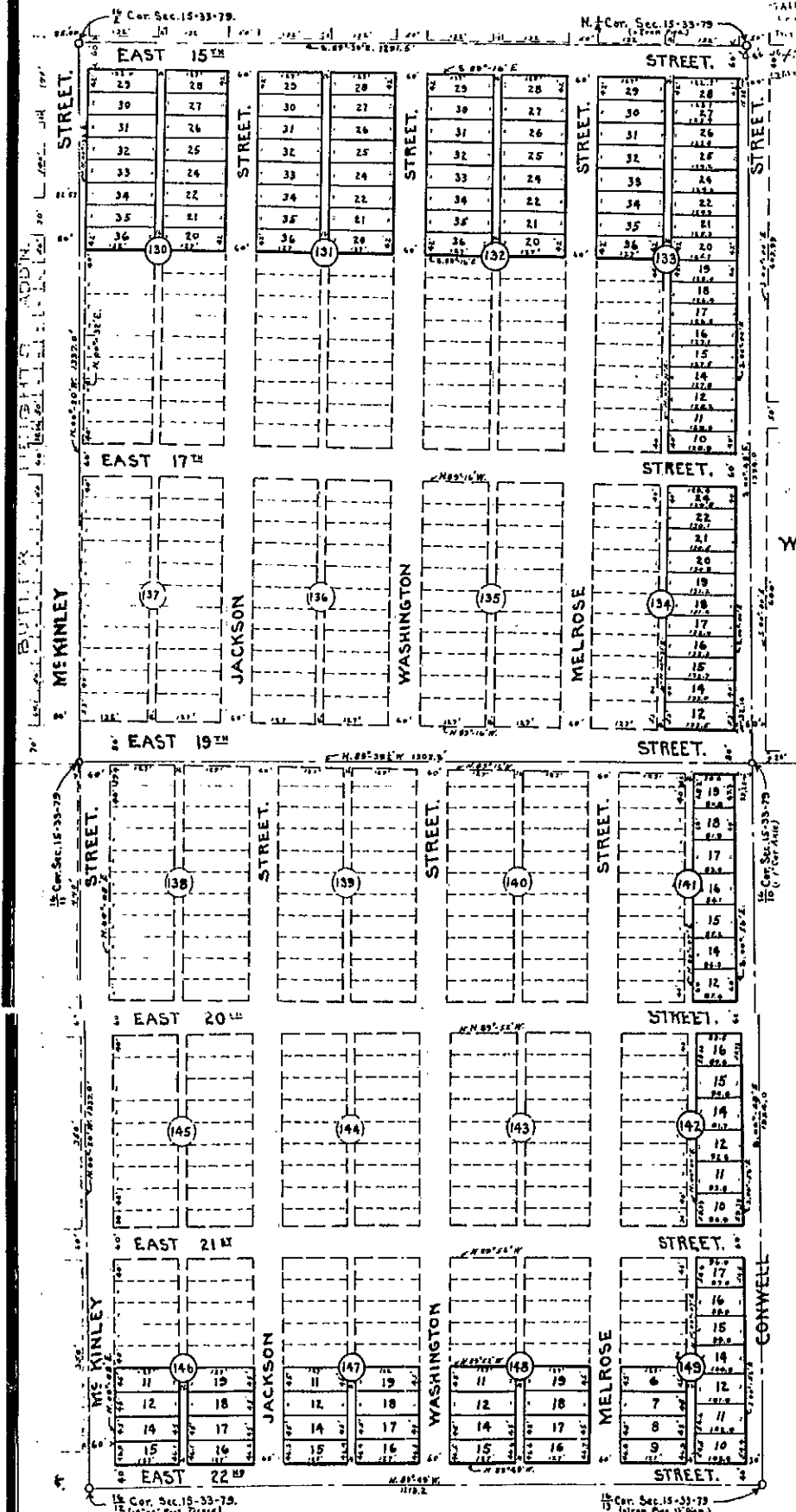


39/183

# SUPPLEMENTAL PLAT OF BUTLER'S ADDITION TO THE CITY OF CASPER, WYOMING.

SCALE: 1 INCH = 150 FEET.

A SUBDIVISION OF A PART OF THE EAST 1/2 OF SECTION 15, TOWNSHIP 33 NORTH, RANGE 79 WEST OF 6TH P.M., NATRONA COUNTY, WYOMING.



STATE OF WYOMING. } ss.  
COUNTY OF NATRONA. }

This is to certify that the above named subdivision of a part of the East One-half of the Northwest One-quarter (E. 1/2 N.W. 1/4) of Section Fifteen (15), Township Thirty-three North (T. 33N.), Range Seventy-nine West (R. 79 W.) of the Sixth Principal Meridian (6th P.M.), as appears on the annexed plat as portions of Blocks: Numbered 130, 131, 132, 133, 134, 141, 142, 146, 147, 148, and 149, said portions of said Blocks being represented by solidly inked lines, and each containing Lots numbered as shown on plat, said subdivision being known as "BUTLER'S ADDITION TO THE CITY OF CASPER" and located in County of Natrona, State of Wyoming, is with the free consent and in accordance with the desires of the undersigned owner and proprietor, The Mountain Realty and Title Corporation, a corporation duly organized and existing under, and by virtue of, the laws of the State of Wyoming.

In witness whereof, said "The Mountain Realty and Title Corporation" has caused these presents signed in its corporate name by its president, to be attested by its secretary, and its corporate seal to be duly affixed, by authority of its board of directors, this 3rd day of May, A.D. 1923.

THE MOUNTAIN REALTY AND TITLE CORPORATION,

By: *M. Elma Butler-Cromer*  
Its President.

Attested: *J.M. Cromer*  
Its Secretary.

Signed in presence of: *Wilbur H. Fisher*  
*Chloe L. Beaman*

STATE OF WYOMING. } ss.  
COUNTY OF NATRONA. }

On this 3rd day of May, A.D. 1923, before me appeared M. Elma Butler-Cromer and J.M. Cromer, both to me personally known, who being by me first duly sworn, did depose and say, that they are the president and secretary respectively of "The Mountain Realty and Title Corporation", a Wyoming corporation, and that the foregoing instrument was signed and sealed by authority of its board of directors, and the said M. Elma Butler-Cromer and J.M. Cromer acknowledge the said instrument to be the free and voluntary act of said corporation.

Given under my hand and seal, this 3rd day of May, A.D. 1923.

My commission expires: January 23rd, 1926.

*[Signature]*  
NOTARY PUBLIC.

STATE OF WYOMING. } ss.  
COUNTY OF NATRONA. }

This is to certify that the survey and subdivision of "BUTLER'S ADDITION TO THE CITY OF CASPER" as shown hereon, and comprising a part of the East One-half of the Northwest One-quarter (E. 1/2 N.W. 1/4) of Section Fifteen (15), Township 33 North, Range 79 West of the 6th Principal Meridian, was made by me during April, A.D. 1923, for "The Mountain Realty and Title Corporation", at the request of M. Elma Butler, its president.

The annexed plat shows the actual results of this survey which includes supplemental additions to those Blocks: Numbered 130, 131, 132, 133, 134, 141, 142, 146, 147, 148 and 149, shown by solidly inked lines, and including Lots, numbered in each Block, as shown on plat. The blocks and lots shown in dotted lines represent surveys of previous record-plats. The lot numbers used on this survey in each block affected, are consecutive to those used in that block as shown on previous record-plat of this Addition, except that in all cases, on both this and previous plate, lots numbered 13 and 23 have purposely been omitted.

This survey was executed with a "Buff" transit and a 100-ft. steel tape. Each block-corner of this survey, at street intersections, was marked on the ground by a 4"x30" pine post, set 20" in the ground, tacked, painted white, and with the appropriate block-numbers painted thereon in black; with exception of those block-corners located along the south line of East 15th Street at its intersections with Jackson, Washington, Melrose and Conwell Streets, where the block-corners were marked with unpainted 4"x20" posts, tacked, but with tops set 6" underground, due to existing traveled road along this line.

A 3"x24" pine post, tacked and painted white, was set 16" in ground, to mark each alley-line intersecting the north line of East 22nd Street, also at all points where the east line of the alley between Melrose and Conwell Streets intersects 17th, 19th, 20th and 21st Streets. Along the south line of East 15th Street, at its intersections with all alley-lines, 1"x14" oak stakes were set, tacked and driven flush with ground surface. All other lot-corners were marked by oak stakes, 1"x14" 17", driven 13" into ground and painted white; those bordering streets were also tacked and painted with the appropriate lot numbers in black. The original corner-stakes of the previous plat which abutts this survey were in no cases disturbed or replaced by new stakes.

The 16-Corners shown were all previously established from the recognized monuments marking the corners and 1/4-corners of Sec. 15-33-79, as shown on previously filed record-plats, and following the procedure of the U.S. Land Office.

All bearings and distances shown were measured with care, and are correct as shown, to the best of my knowledge and belief.

Witness my hand and seal, this 3rd day of May, A.D. 1923.

Engineer's License No. 90, State of Wyoming.

*Wilbur H. Fisher*  
Surveyor.

STATE OF WYOMING. } ss.  
COUNTY OF NATRONA. }

On this 3rd day of May, A.D. 1923, before me appeared Wilbur H. Fisher, to me personally known, who being by me first duly sworn, did depose and say that he is a surveyor, duly licensed under the laws of the State of Wyoming, that his bond as provided by law is now in force, and that he signed the foregoing instrument as his free and voluntary act.

Given under my hand and seal, this 3rd day of May, A.D. 1923.

My commission expires: January 23rd, 1926.

*[Signature]*  
NOTARY PUBLIC.