

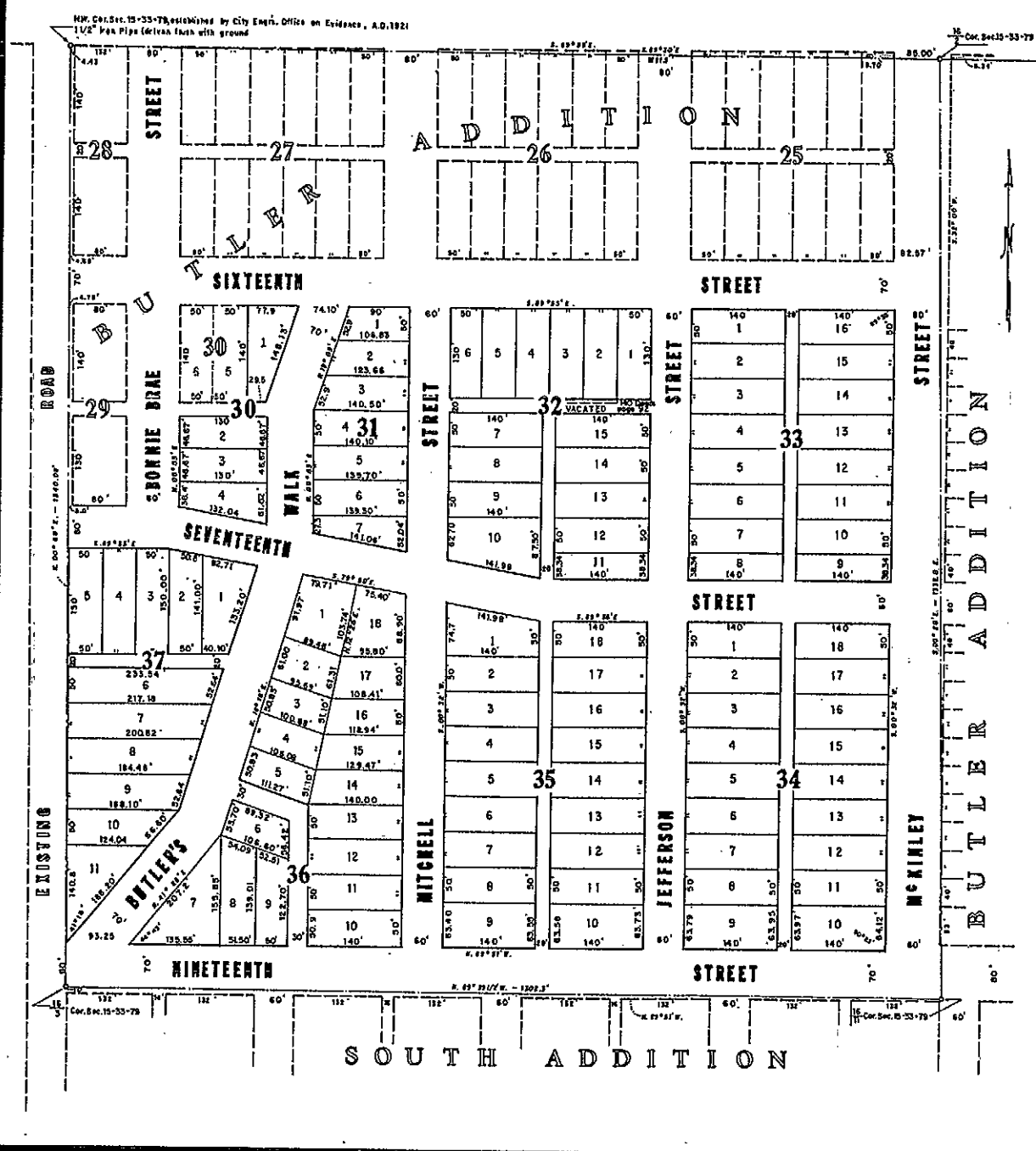
# MAP OF BUTLER HEIGHTS ADDITION TO THE CITY OF CASPER, WYOMING

Scale: 1 inch = 100 feet

STATE OF WYOMING }  
COUNTY OF NATRONA }  
This instrument was filed for Record  
Mar. 31st, 1923, at 3:40 o'clock P.M.,  
and duly recorded in Book 39 of Deeds,  
at page 40.  
Signed: Alvin F. Hawley, County Clerk.

39/40

NOTE: This is a copy of the original BUTLER HEIGHTS ADDITION plat prepared for the convenience of the users. Every effort has been made to insure its accuracy, however errors may exist, please check against the original plat.



## A SUBDIVISION OF A PART OF NW1/4NW1/4 OF SECTION 15, TOWNSHIP 33 NORTH - RANGE 79 WEST OF 6th P.M., NATRONA COUNTY, WYOMING

STATE OF WYOMING }  
COUNTY OF NATRONA }  
SS

This is to certify that the above named subdivision of a part of the Northwest one-quarter of the Northwest one-quarter (NW1/4NW1/4) of Section Fifteen (15), Township Thirty-Three North (T.33N.) Range Seventy-nine West (R.79W.) of the Sixth Principal Meridian (6th P.M.), as appears on the annexed plat as Blocks numbered consecutively from 30 to 37, both inclusive, shown by solid ink lines, each block containing Lots numbered consecutively upward from 1 inclusive, said subdivision being known as "BUTLER HEIGHTS ADDITION TO THE CITY OF CASPER" located in County of Natrona, State of Wyoming, is with the free consent and in accordance with the desires of the undersigned owner and proprietor, "The Mountain Realty and Title Corporation," a corporation duly organized and existing under, and by virtue of, the laws of the State of Wyoming.

In witness whereof, said "The Mountain Realty and Title Corporation" has caused these presents to be signed in its corporate name by its president, to be attested by its secretary, and its corporate seal to be duly affixed, by authority of its board of directors, this 31st day of March A.D. 1923:

THE MOUNTAIN REALTY AND TITLE CORPORATION,  
By M. Elma Butler-Cromer  
ITS PRESIDENT  
Attested: L. M. Cromer  
ITS SECRETARY

STATE OF WYOMING }  
COUNTY OF NATRONA }  
SS

On this 31st day of March A.D. 1923, before me appeared M. Elma Butler-Cromer and J.M. Cromer both to me personally known, who by me first duly sworn, did depose and say, that they are the president and secretary respectively of "The Mountain Realty and Title Corporation," a Wyoming corporation, and that the seal affixed to the foregoing instrument was signed and sealed by authority of its board of directors; and the said M. Elma Butler-Cromer and J.M. Cromer acknowledge the said instrument to be the free and voluntary act of said corporation.

Given under my hand and seal, this 31st day of March A.D. 1923.  
My commission expires: Sept. 2nd 1923.

John M. England  
NOTARY PUBLIC

STATE OF WYOMING }  
COUNTY OF NATRONA }  
SS

This is to certify that the survey and subdivision of "BUTLER HEIGHTS ADDITION TO THE CITY OF CASPER" as shown hereon and comprising a part of the Northwest One-quarter of the Northwest One-quarter (NW1/4NW1/4) of Section Fifteen (15) Township 33 North (T.33N.) Range 79 West (R.79W.) of the Sixth Principal Meridian (6th P.M.) was made by me during March, A.D. 1923, for "The Mountain Realty and Title Corporation" at the request of Elma Butler-Cromer, its President. The annexed plat shows the actual results of this survey which includes only those Blocks (Numbers 30 to 37 inclusive) shown by solid-inked lines. The blocks and lots shown by dotted lines represent surveys of previous record plats.

This survey was executed with a "Buff" transit and 100 ft. steel tape. Each block-Corner was marked by a 4"x4"x30" pine stake set 20" in the ground, tacked and painted white with appropriate block-numbers in black. All angle-points of alleys or their intersections with streets were marked by 3"x3"x24" pine stakes set 18" in ground, tacked and painted white.

All lot-corners were marked by 1"x1-3/4"x17" oak stakes, not tacked, set 12" in ground, and painted white. Those lot-stakes along streets were marked with proper numbers in black point.

The 16-Corners shown were determined from the previously established and recognized monuments marking the corners and quarter-corners of Sec. 15-33-79, as shown on existing record plats, previously filed.

All dimensions and angles on this survey were measured with care, and as shown hereon, are correct to the best of my knowledge and belief.

Witness my hand and seal, this 31st day of March, A.D. 1923  
Engineers License No. 90  
State of Wyoming.

Wilbur H. Fisher  
SURVEYOR

STATE OF WYOMING }  
COUNTY OF NATRONA }  
SS

On this 31st day of March A.D. 1923, before me appeared Wilbur H. Fisher, to me personally known, who being by me first duly sworn, did depose and say that he is a surveyor, duly licensed under the laws of the State of Wyoming, that his bond as provided by law is now in force, and that he signed the above instrument as his free and voluntary act.

Given under my hand and seal, this 31st day of March A.D. 1923.  
My Commission expires: Sept. 2, 1923.

John M. England  
NOTARY PUBLIC