

CAPSHAW ADDITION #347  
 Recorded August 16, 1983  
 Instrument #356645

356645

356645

PLAT TO ACCOMPANY ANNEXATION PETITION FOR

**CAPSHAW ADDITION**

RECORDED IN THE PUBLIC RECORDS OF NATRONA COUNTY, WYOMING  
 INSTRUMENT NO. 356645  
 BOOK 100 PAGE 11

RECEIVED  
 AUG 16 1983

SECTION 8 & A PART OF SECTION 9, T34N, R79W, 6th P.M.  
 TOWN OF BAR NUNN, NATRONA COUNTY, WYOMING

**CERTIFICATE OF DEDICATION:**

The undersigned, Capshaw Properties, a Wyoming Partnership, do hereby certify that it is the owner and proprietor of a tract of land consisting of all of Section 8 and a portion of the West one half of Section 9, T34N, R79W, 6th P.M., Natrona County, Wyoming, being more particularly described as follows:  
 Beginning at the Northwest corner of Section 8, T34N, R79W, 6th P.M., Natrona County, Wyoming, thence along the North line of said Section 8, N89°00'27"E, 1330.75 feet to the West 1/4 corner between Sections 8 and 9; thence, continuing along the North line of said Section 8, N88°58'02"E, 1322.06 feet to the North 1/4 corner of Section 8; thence, continuing along the North line of said Section 8, N89°00'16"E, 1323.24 feet to the East 1/4 corner between Sections 8 and 9; thence, continuing along the North line of said Section 8, N88°59'07"E, 1322.07 feet to the Northeast corner of Section 8; thence, along the North line of said Section 9, N89°54'41"E, 692.29 feet to the West right-of-way line of the Salt Creek Highway; thence, along said right-of-way line, S06°47'10"W, 5250.86 feet to a point on the South line of Section 9; thence, along the South line of said Section 9, N88°36'49"W, 133.49 feet to the Southwest corner of Section 9; thence, along the South line of said Section 8, S87°44'26"W, 2612.80 feet to the South 1/4 corner of Section 8; thence, continuing along the South line of said Section 8, S57°46'39"W, 2613.80 feet to the Southwest corner of Section 8; thence, along the West line of Section 8, N00°05'52"W, 2658.89 feet to the West 1/4 corner of Section 8; thence, continuing along the West line of said Section 8, N00°15'06"W, 1330.47 feet to the North 1/4 corner between Section 8 and 9; thence, continuing along the West line of said Section 8, N00°06'56"W, 1331.56 feet to the Point of Beginning.

Described tract of land contains 685.091 Acres, more or less, and it also certifies that this dedication is made with the free consent and desires of the undersigned and that the annexed area, as shown on this plat, shall be known as "Capshaw Addition" to the town of Bar Nunn, Wyoming, and that it hereby relinquishes any and all rights granted under the Homestead Exemption Laws of Wyoming.

**CAPSHAW PROPERTIES**  
 a Wyoming Partnership  
 Jim L. Capshaw, Fred G. Capshaw, Michael Wass, L.T. Parkins  
 431 No. Elk, 431 No. Elk, 119 Crescent Drive, 1501 Nottingham Dr.  
 Casper, Wyo. Casper, Wyo. Mtn. View, Wyo. Cooper, Wyo.

STATE OF WYOMING }  
 COUNTY OF NATRONA } SS  
 The foregoing instrument was acknowledged before me by Jim L. Capshaw, Fred G. Capshaw, Michael Wass and L.T. Parkins this 17th day of May, 1983.  
 Witness my hand and official seal.  
 My commission expires \_\_\_\_\_  
 Dennis B. Knaege  
 Notary Public.

**CERTIFICATE OF SURVEYOR:**  
 STATE OF WYOMING }  
 COUNTY OF NATRONA } SS  
 I, Charles K. Wolt, of Casper, Wyoming, hereby certify that this plat was made from notes taken during an actual survey made by me or under my direction during April, 1981, and that this plat correctly and accurately represents that survey and that the error of closure exceeds 1:10,000.  
 Charles K. Wolt  
 Charles K. Wolt, Reg. P.S. Wyo Lic. No. 632

The foregoing instrument was acknowledged before me by Charles K. Wolt this 5th day of May, 1983.  
 Witness my hand and official seal.  
 My commission expires Sept. 18, 1984.  
 Patricia Don Francisco  
 Notary Public

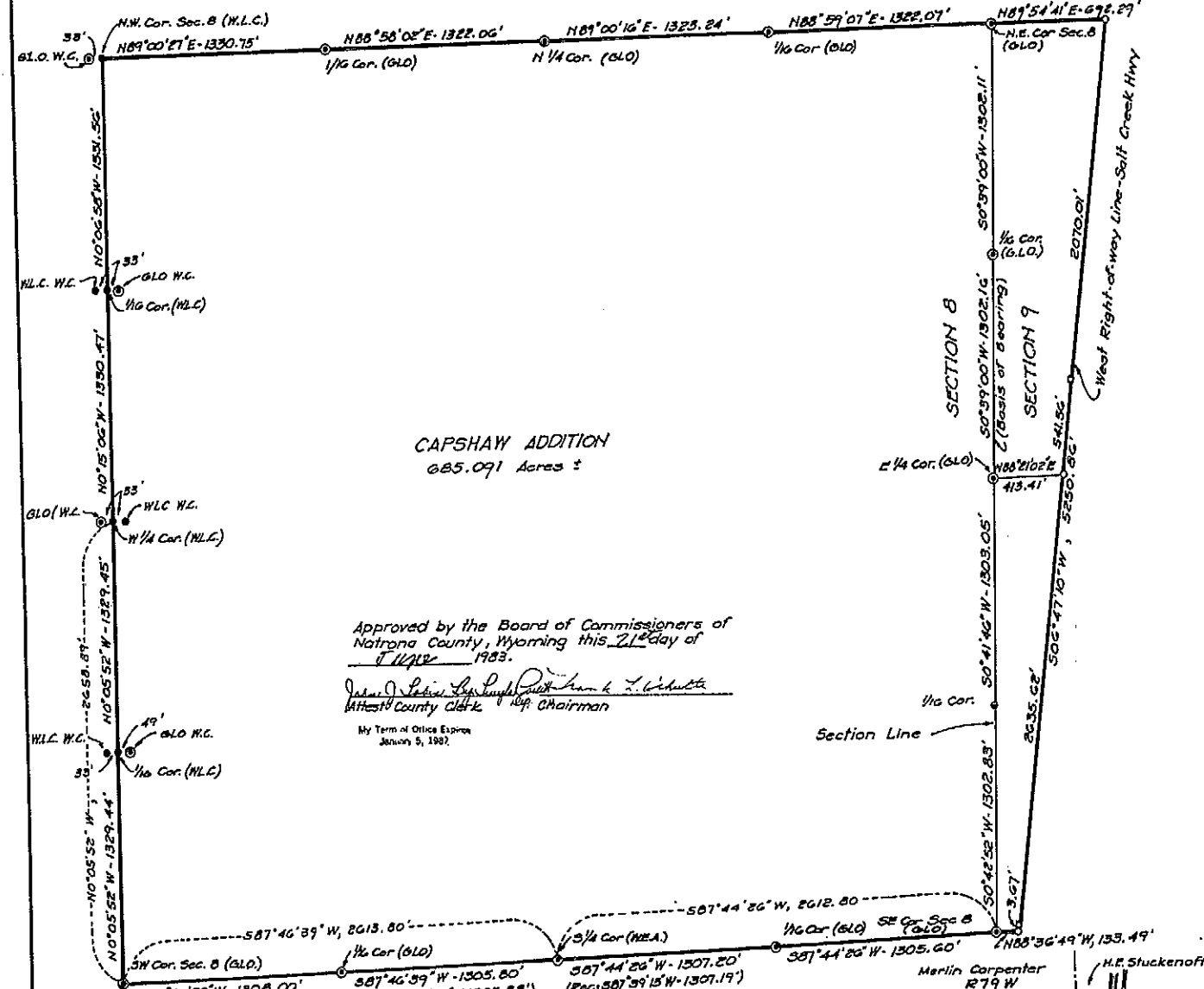
**APPROVALS:**  
 Approved by the Bar Nunn Planning and Zoning Commission this 23rd day of June, 1983  
 Linda Baxsa, Chairman  
 ATTEST: Secretary

Approved by the Town Council of Bar Nunn Wyoming by Ordinance No. 83-05 duly passed, adopted and approved this 21st day of June, 1983.  
 ATTEST: Town Clerk  
 Russ L. Petty  
 Mayor

Inspected and Approved this 9th day of August, 1983  
 Russell L. Donley  
 Town Engineer

Inspected and Approved this 3rd day of May, 1983  
 Ed L. Rote Jr.  
 Wardwell Water and Sewer District

**RECORDED:**  
 Filed for Record in the Office of the County Clerk of Natrona County, Wyoming this 16th day of August, 1983  
 Book \_\_\_\_\_ Page \_\_\_\_\_  
 Order: J. P. Smith, By: L. J. Smith, Clerk



Approved by the Board of Commissioners of Natrona County, Wyoming this 21st day of May, 1983.  
 James D. Selig, Chairman  
 Western County Clerk  
 My Term of Office Expires  
 January 5, 1987

**PLATTED SURVEY NOTES**

**LEGEND**

- GLO (C) Brass Cap By Gov't Land Office
- GLO W.C. (C) Brass Cap Witness Corner By Gov't Land Office.
- WEA (C) Brass Cap By Western Engineers-Architects Inc.
- WLC (C) Rebar & Alum. Cap By Worthington, Lenhart & Carpenter.
- WLC W.C. (C) Rebar & Alum. Cap Witness Corner By Worthington, Lenhart & Carpenter.
- (C) Unmarked Rebar
- (C) Highway Right-of-way Marker
- (C) Rebar & Alum. Cap By Wolt & Associates, Inc.

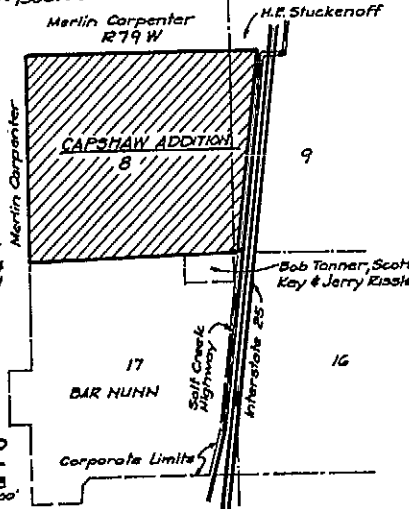
SCALE: 0 200' 400' 600'



PLAT PREPARED BY:  
**WOLT & ASSOCIATES, INC.**  
 935 W. 14th St., Casper, Wyo.  
 DATED: APRIL, 1983

**VICINITY MAP**

SCALE: 0 1000' 2000' 4000'



**NOTE:**  
 Bench Mark Datum - 1933 Coast & Geodetic Survey  
 B.M. Q-32-5340.278