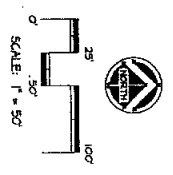
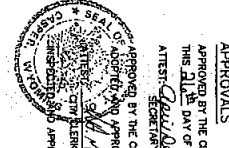
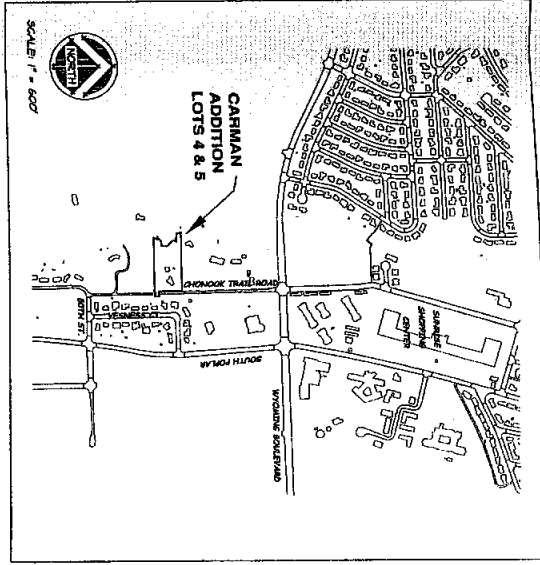
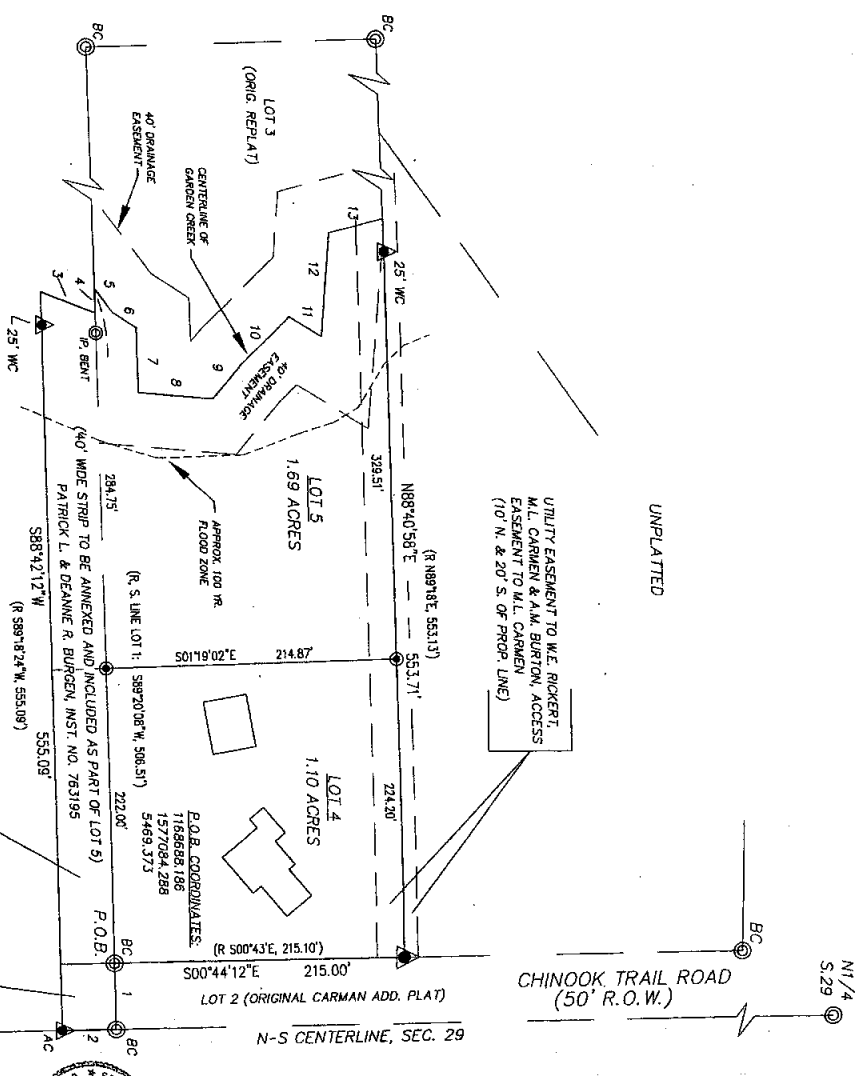




- LEGEND**
- ▲ SET BRASS CAP
 - SET MONUMENT 5/8" REBAR & ALUMINUM CAP
 - FOUND MONUMENT AS NOTED



THIS SURVEY	RECORD
1	N89°18'24"E 50.00'
2	S00°44'39"E 39.93'
3	N22°30'57"E 43.52'
4	S89°18'24"W 18.54'
5	N33°46'52"E 20.09'
6	N53°02'17"E 23.04'
7	N89°18'03"E 48.73'
8	N05°25'40"E 55.28'
9	N50°02'37"W 50.00'
10	N43°44'18"W 50.00'
11	N33°21'17"E 27.98'
12	N69°15'18"W 78.00'
13	N14°28'19"W 41.11'
	N3°41'08"W 41.11'



APPROVALS

APPROVED BY THE CITY OF CASPER PLANNING AND ZONING COMMISSION OF CASPER, WYOMING THIS 21ST DAY OF SEPTEMBER, 2008.

ATTEST: *[Signature]* SECRETARY

APPROVED BY THE CITY CLERK OF CASPER, WYOMING BY ORDINANCE NO. 3-01, JULY 14TH 2008.

[Signature] CITY CLERK

APPROVED THIS 9TH DAY OF FEBRUARY, 2008. *[Signature]* CITY ENGINEER

INSPECTED AND APPROVED THIS 9TH DAY OF FEBRUARY, 2008. *[Signature]* CITY SURVEYOR

INSPECTED AND APPROVED THIS 27TH DAY OF FEBRUARY, 2007. *[Signature]* CITY SURVEYOR

RECORDED

FILED FOR RECORD IN THE OFFICE OF THE COUNTY CLERK OF NATRONA COUNTY, WYOMING THIS 26TH DAY OF FEBRUARY, 2008.

INSTRUMENT NO. 812601

[Signature] COUNTY CLERK

NOTES

1. ERROR OF CLOSURE IS 1:141,870.
2. BASIS OF BEARINGS IS THE WYOMING STATE PLANE COORDINATE SYSTEM, EAST CENTRAL ZONE, NAD 1983/1986.
3. THE CONVERGENCE ANGLE AT THE SOUTHWEST CORNER OF SUBDIVISION IS 0°0'13.3", AND THE CONVERSION SCALE FACTOR IS 0.999750031.

By term of office expires January 9, 2011

CERTIFICATE OF SURVEYOR

STATE OF WYOMING)
COUNTY OF NATRONA) ss

I, JAMES F. JONES, A REGISTERED PROFESSIONAL LAND SURVEYOR, LICENSE NO. 5520, DO HEREBY CERTIFY THAT THE FOREGOING INSTRUMENT WAS MADE UNDER MY DIRECT SUPERVISION AND BELIEVE IT TO BE CORRECT AND ACCURATE IN ALL DIMENSIONS AND BELIEVE THE TRUE MERIDIAN, ALL BEING TRUE AND CORRECT TO THE BEST OF MY KNOWLEDGE AND BELIEF.

THE FOREGOING INSTRUMENT WAS ACKNOWLEDGED BEFORE ME BY JAMES F. JONES THIS 25TH DAY OF FEBRUARY, 2008.

WITNESS MY HAND AND OFFICIAL SEAL, THIS 25TH DAY OF FEBRUARY, 2008.

[Signature] COUNTY CLERK

CERTIFICATE OF DEDICATION

STATE OF WYOMING) ss

THE FOREGOING INSTRUMENT WAS ACKNOWLEDGED BEFORE ME BY PATRICK L. AND DEANNE R. BURGEN THIS 23RD DAY OF FEBRUARY, 2008.

WITNESS MY HAND AND OFFICIAL SEAL, THIS 23RD DAY OF FEBRUARY, 2008.

[Signature] COUNTY CLERK

REPLAT OF LOT 1 OF THE REPLAT OF LOT 1, CARMAN ADDITION AND ANNEXATION AND SUBDIVISION OF AN UNPLATTED STRIP OF LAND LOCATED IN THE NEQUANIN SECTION 29, 135N., R.79W., AS

CARMAN ADDITION LOTS 4 AND 5

TO THE CITY OF CASPER, WYOMING NATRONA COUNTY WYOMING



PATRICK L. AND DEANNE R. BURGEN

[Signature] PATRICK L. BURGEN

[Signature] DEANNE R. BURGEN

NOTARY PUBLIC



812601

REPLAT OF LOT 1 OF THE REPLAT OF LOT 1, CARMAN ADDITION AND ANNEXATION AND SUBDIVISION OF AN UNPLATTED STRIP OF LAND LOCATED IN THE NEQUANIN SECTION 29, 135N., R.79W., AS

CARMAN ADDITION LOTS 4 AND 5

TO THE CITY OF CASPER, WYOMING NATRONA COUNTY WYOMING