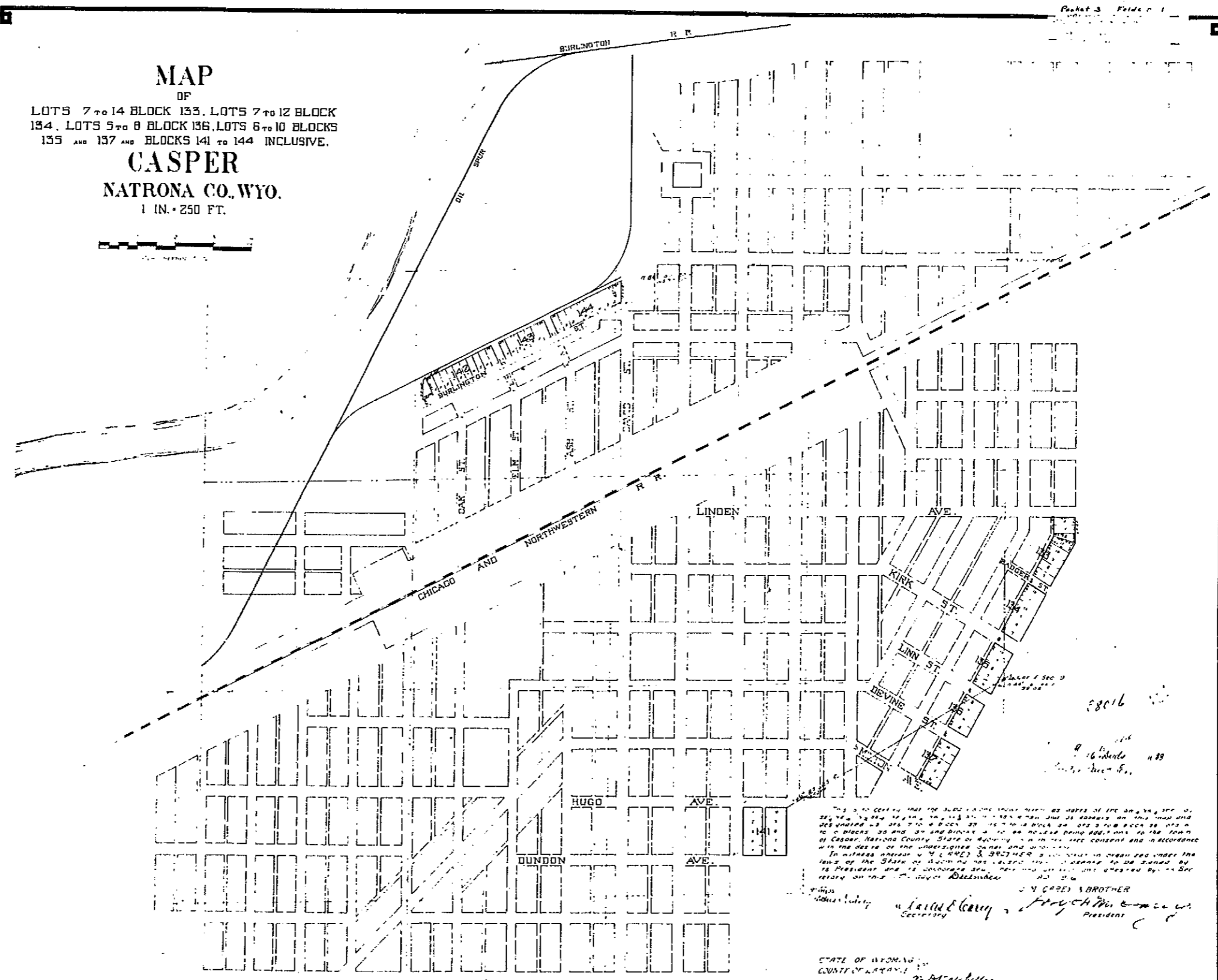
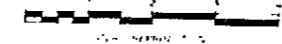


16/488

MAP  
OF  
LOTS 7 TO 14 BLOCK 133, LOTS 7 TO 12 BLOCK  
134, LOTS 5 TO 8 BLOCK 136, LOTS 6 TO 10 BLOCKS  
135 AND 137 AND BLOCKS 141 TO 144 INCLUSIVE.  
**CASPER**  
NATRONA CO., WYO.  
1 IN. = 250 FT.



This is to certify that the above is a true and correct copy of the map as shown on this map and as shown on the ground. It is made this 1st day of August, 1911, at Casper, Natrona County, State of Wyoming, in the presence of the undersigned Charles D. Carey and Secretary of the State of Wyoming and the same being made under the laws of the State of Wyoming and in accordance with the provisions of the laws of the State of Wyoming and in accordance with the provisions of the laws of the State of Wyoming and in accordance with the provisions of the laws of the State of Wyoming.

W. CAREY & BROTHER  
Secretary  
President

STATE OF WYOMING  
COUNTY OF NATRONA  
I, W. B. Ketchum, Clerk of the County of Natrona, State of Wyoming, do hereby certify that the above is a true and correct copy of the map as shown on this map and as shown on the ground. It is made this 1st day of August, 1911, at Casper, Natrona County, State of Wyoming, in the presence of the undersigned Charles D. Carey and Secretary of the State of Wyoming and the same being made under the laws of the State of Wyoming and in accordance with the provisions of the laws of the State of Wyoming and in accordance with the provisions of the laws of the State of Wyoming.

My commission expires 7-1-11