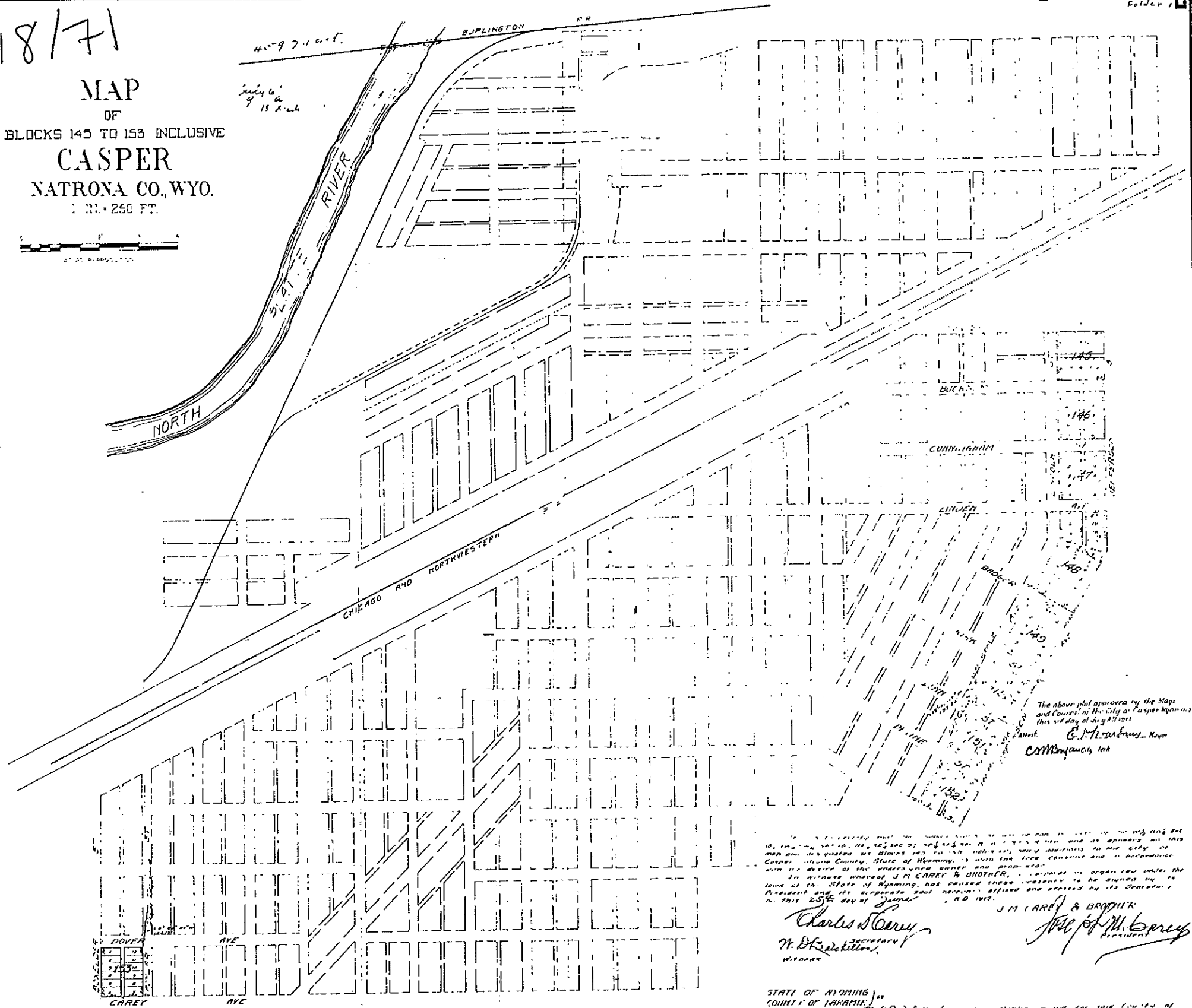
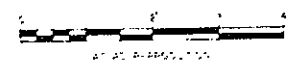


18171

MAP
OF
BLOCKS 145 TO 153 INCLUSIVE
CASPER
NATRONA CO., WYO.
1 IN. = 250 FT.



The above plat approved by the Mayor and Council of the City of Casper Wyoming this 25th day of June 1917
E. M. Williams Mayor
City of Casper

I, J. M. Carey & Brother, a corporation organized under the laws of the State of Wyoming, has caused these plat to be printed by its President and its corporate seal hereunto affixed and attested by its Secretary on this 25th day of June, A.D. 1917.
Charles D. Carey Secretary
W. D. Beckellon Witness
J. M. Carey & Brother
President

STATE OF WYOMING)
COUNTY OF LARAMIE)
I, W. D. Beckellon, a notary public in and for said County of Laramie and State of Wyoming, do hereby certify that J. M. Carey and Charles D. Carey, who are personally known to me to be the President and Secretary respectively of J. M. Carey & Brother, a corporation organized under the laws of the State of Wyoming, and the same persons whose names are subscribed to the foregoing instrument as such President and Secretary, respectively appeared before me this day in person and severally acknowledged that they signed sealed and delivered said instrument in behalf of said corporation and that said instrument and subscriptions are the free and voluntary acts of said corporation for the uses and purposes therein set forth.
Given under my hand and notarial seal this 25th day of June, A.D. 1917.
W. D. Beckellon
Notary Public

STATE OF WYOMING)
COUNTY OF PLATTE)
I, J. A. Elliot, of Wheatland Wyoming hereby certify that this map was made from the notes taken by me during an actual survey made on May 31st & including 1917. That all blocks, streets and alleys are well and accurately platted and marked by course and in accordance with the true bearings, that all angles between adjacent corners as shown on the plat were determined by transit corner plate readings. The total area of the addition is 3048 Acres

J. A. Elliot
Surveyor