

PLAT OF 20410.607  
**CASPER COMMUNITY COLLEGE**  
 AN ADDITION TO THE CITY OF CASPER  
 NATRONA COUNTY WYOMING  
 BEING PORTIONS OF  
 THE W<sup>1</sup>/<sub>2</sub> NE<sup>1</sup>/<sub>4</sub> & THE E<sup>1</sup>/<sub>2</sub> NW<sup>1</sup>/<sub>4</sub>, SECTION 16  
 T.33 N., R.79 W. OF THE 6th P. M., WYOMING.  
 SCALE: 1" = 160'

**CERTIFICATE OF PLATTING**

CASPER COMMUNITY COLLEGE DISTRICT, STATE OF WYOMING, a Body Corporate, does hereby certify that the foregoing parts of the W<sup>1</sup>/<sub>2</sub> NE<sup>1</sup>/<sub>4</sub> and the E<sup>1</sup>/<sub>2</sub> NW<sup>1</sup>/<sub>4</sub> of Section 16, T.33 N., R.79 W. of the 6th Principal Meridian, Natrona County, Wyoming, as shown on this plat is with the free consent and in accordance with our desires, the undersigned owners and proprietors of said lands, that the said parts of the W<sup>1</sup>/<sub>2</sub> NE<sup>1</sup>/<sub>4</sub> and E<sup>1</sup>/<sub>2</sub> NW<sup>1</sup>/<sub>4</sub> of Section 16, shall be named CASPER COMMUNITY COLLEGE, an addition to the City of Casper, Natrona County, Wyoming; a Metes and Bounds description of said CASPER COMMUNITY COLLEGE follows:

Beginning at the southeasterly corner of the foregoing parcel, which corner and point marks the intersection of the westerly Right of Way line of Wyoming State Secondary Highway No. 1301 with the southerly line of said E<sup>1</sup>/<sub>2</sub> NW<sup>1</sup>/<sub>4</sub>, Section 16, and being located at S. 89° 34' W., 267.20 feet from the Center One-Quarter (C<sub>1</sub>) corner of said Section 16; thence S. 89° 34' W., 935.86 feet along the southerly line of said parcel and E<sup>1</sup>/<sub>2</sub> NW<sup>1</sup>/<sub>4</sub>, Section 16 to an intersection with the easterly Right of Way line of College Drive, City of Casper, Natrona County, Wyoming; thence Northeasterly along said easterly Right of Way line of College Drive and along the arc of a true curve to the left, having a radius of 1186.00 feet, 790.03 feet to a point of tangency; thence along said Right of Way, N. 0° 31' E., 171.84 feet to a point of curve; thence Northeasterly along the arc of a true curve to the right, having a radius of 531.15 feet, 466.91 feet to a point in the easterly line of Community Drive, as said Community Drive is set out by the Official Plat of Community Park Addition to said City of Casper; thence N. 50° 53' E., 1.55 feet along said line to a point of curve; thence Northeasterly from said point of curve and along the easterly line of said Community Drive, now designated as College Drive and hereinafter referred to as College Drive, and along the arc of a true curve to the left, having a radius of 544.60 feet, 374.66 feet to a point which marks the southwesterly corner of Lot One (1), Block 9, of said Community Park Addition; thence continuing along the southeasterly line of said College Drive and the northwesterly and front line of said Block 9, Community Park Addition, N. 11° 28' E., 182.2 feet to a point of curve; thence Northeasterly along the arc of a true curve to the right, having a radius of 342.1 feet, 377.65 feet to a point of tangency; thence N. 74° 43' E., 445.40 feet along said College Drive to a point marking an intersection with the southerly projection of the easterly line of South David Street of said Community Park Addition; thence N. 0° 07' E., 307 feet to a point in the southerly line of said College Drive in said Community Park Addition; thence S. 89° 53' E., along the southerly line of said College Drive, 652.66 feet to an intersection with the westerly Right of Way line of Wyoming State Secondary Highway No. 1301; thence along said Right of Way line and easterly line of the parcel being described, Southerly along the arc of a true curve to the right, having a radius of 1934.86 feet, 1069.36 feet to a point of tangency; thence along said Right of Way line, S. 36° 22' W., 698.42 feet to a point of curve; thence Southwesterly along the arc of a true curve to the left, having a radius of 1984.86 feet, 698.61 feet to the point of beginning and containing 55.52 acres more or less.

CASPER COMMUNITY COLLEGE DISTRICT, STATE OF WYOMING, a Body Corporate:

ATTEST: *Charles P. Johnson* SECRETARY  
*Percy M. Cooper* PRESIDENT, BOARD OF TRUSTEES

STATE OF WYOMING }  
 COUNTY OF NATRONA } ss  
 On this 12 day of November, 1964, before me personally appeared Percy M. Cooper and Charles P. Johnson, President of the Board of Trustees and Secretary respectively of Casper Community College District, State of Wyoming, a Body Corporate, and to me personally known and who executed the foregoing instrument and acknowledged that they executed the same in accordance with a Resolution of the Board of Trustees and as the free act and deed of said Board of Trustees, and did affix hereto the seal of said Body Corporate.

Given under my hand and notarial seal the 12 day of November, 1964.  
 My Commission expires on the 14 day of July, 1967. *Francis J. Shea* NOTARY PUBLIC

**CERTIFICATE OF SURVEYOR**

STATE OF WYOMING }  
 COUNTY OF NATRONA } ss  
 I, E. C. Lenhart of Casper, Wyoming do hereby certify that this plat was prepared from notes taken during actual surveys made by me, commencing January 17, 1964 and completed May 1, 1964 and that such plat correctly represents such surveys and the Casper Community College, an addition to the City of Casper, Natrona County, Wyoming; all dimensions are expressed in feet and decimals thereof and all courses referred to the true meridian; such surveys as represented hereon are correct to the best of my knowledge and belief and in conformance with Ordinance No. 1366 A City of Casper, Wyoming. Wyoming Registration No. 520 P. E. & L. S. *E. C. Lenhart*

Subscribed in my presence and sworn to before me this 30 day of July, 1964.  
 My Commission expires: May 27, 1965 *Anna J. Jennings* NOTARY PUBLIC

**PLAT APPROVED**

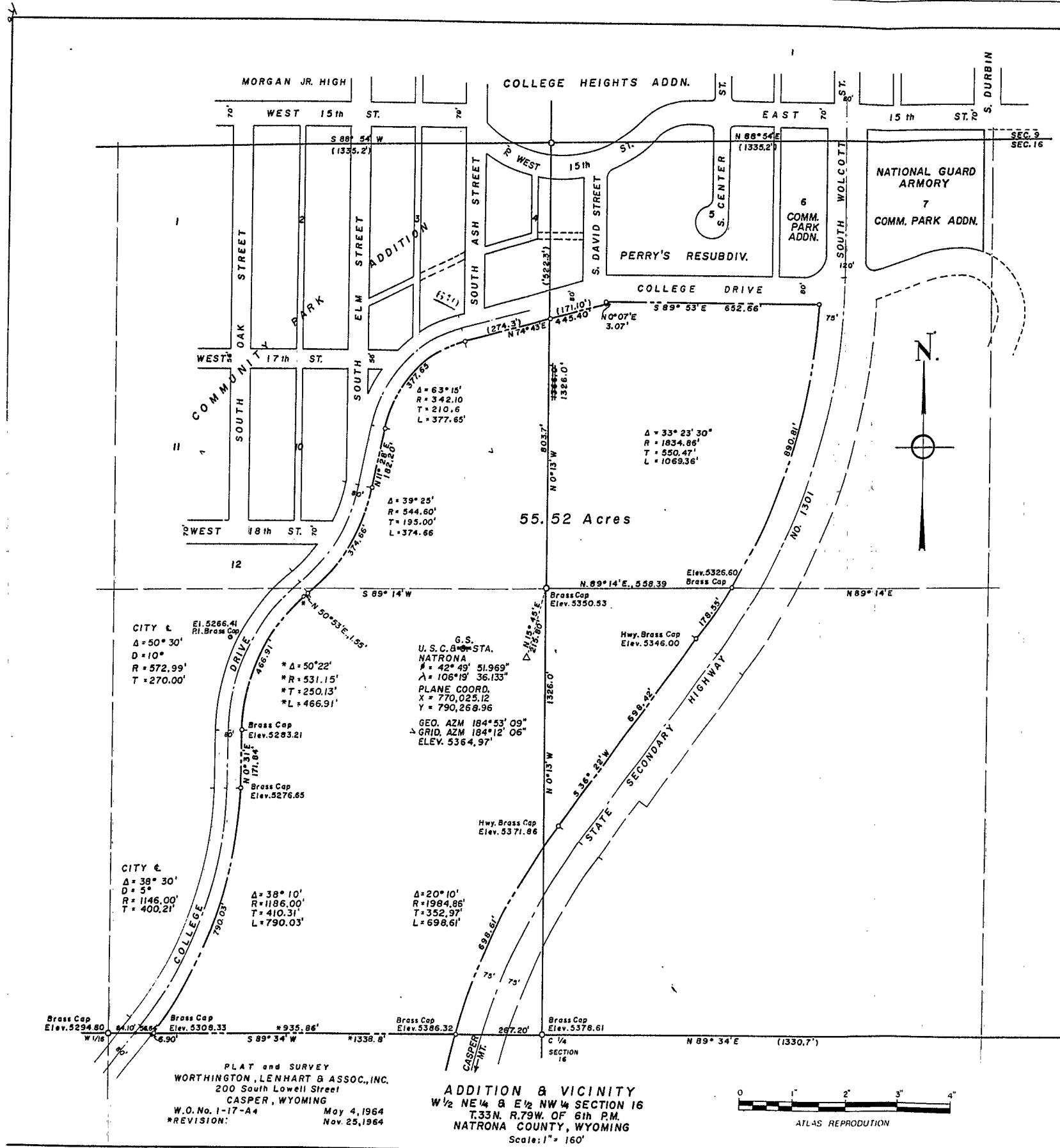
Plat approved by the COMMUNITY PLANNING COMMISSION of Casper, Wyoming and forwarded to the City Council of Casper, Wyoming, this 15 day of Nov, 1964, with recommendation that said plat be approved.

ATTEST: *William P. Buhle* SECRETARY  
*W. J. ...* CHAIRMAN OF COMMISSION

CITY COUNCIL, City of Casper, Wyoming, by Ordinance No. 1464-A, duly passed, adopted and approved on the 20 day of Dec, 1964.  
*W. J. ...* MAYOR

ATTEST: *...* CITY CLERK  
*...* PRESIDENT OF COUNCIL  
*...* COUNTY CLERK

Inspected and approved: *...* CITY ENGINEER  
 Inspected and approved: *George R. Hughes* COUNTY SURVEYOR  
 Filed for record in the Office of the County Clerk of Natrona County, Wyoming this ... day of ..., 1964. *...* COUNTY CLERK



PLAT and SURVEY  
 WORTHINGTON, LENHART & ASSOC., INC.  
 200 South Lowell Street  
 CASPER, WYOMING  
 W.O. No. 1-17-A4 May 4, 1964  
 \*REVISION: Nov. 25, 1964

ADDITION & VICINITY  
 W<sup>1</sup>/<sub>2</sub> NE<sup>1</sup>/<sub>4</sub> & E<sup>1</sup>/<sub>2</sub> NW<sup>1</sup>/<sub>4</sub> SECTION 16  
 T.33 N. R.79 W. OF 6th P.M.  
 NATRONA COUNTY, WYOMING  
 Scale: 1" = 160'

