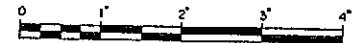


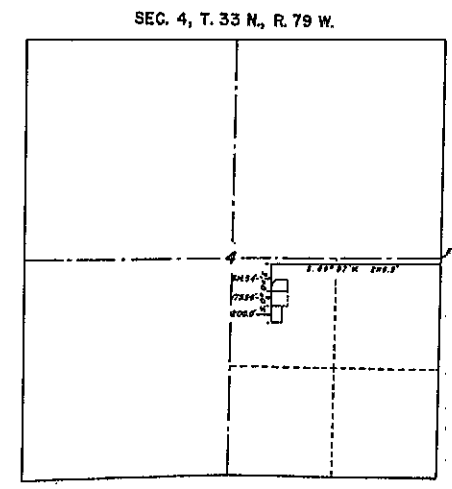
PART OF NW 1/4 SE 1/4 SECTION 4, T. 33 N., R. 79 W.

LEGEND

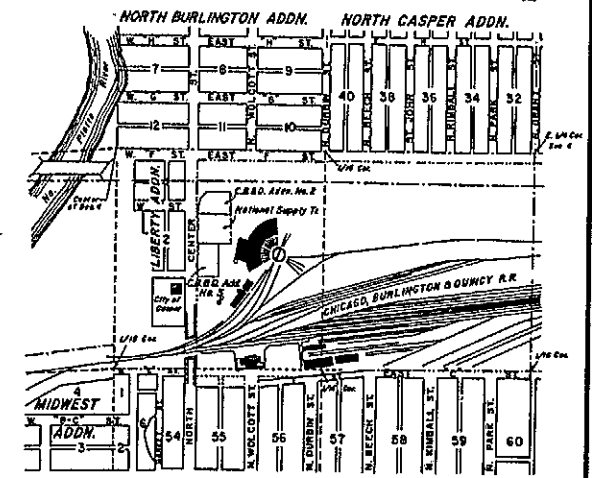
- Subdivision Boundary
- Other Surveyed Boundaries
- Other Surveyed Lines
- Street Center Lines
- Section Center Lines
- Brass Cop Monuments and Property Markers
- Brass Cop Monuments and Property Markers Established from 1880 Survey
- Other Corners



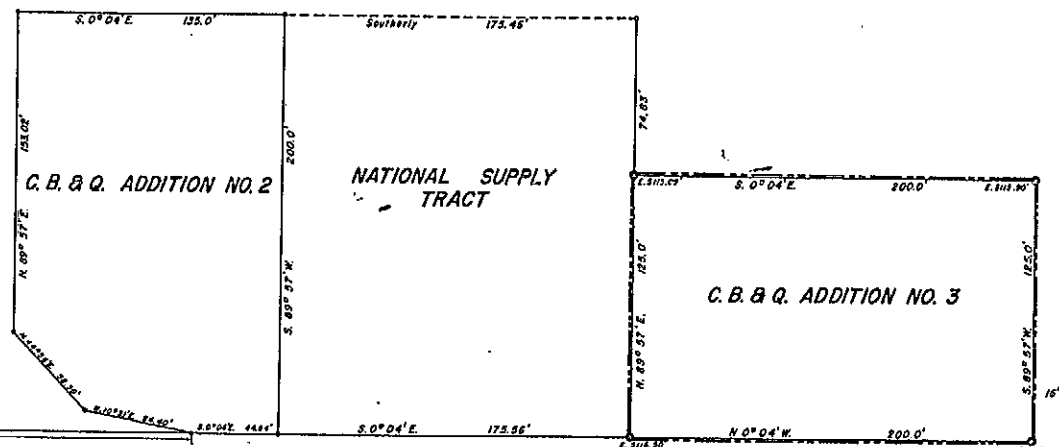
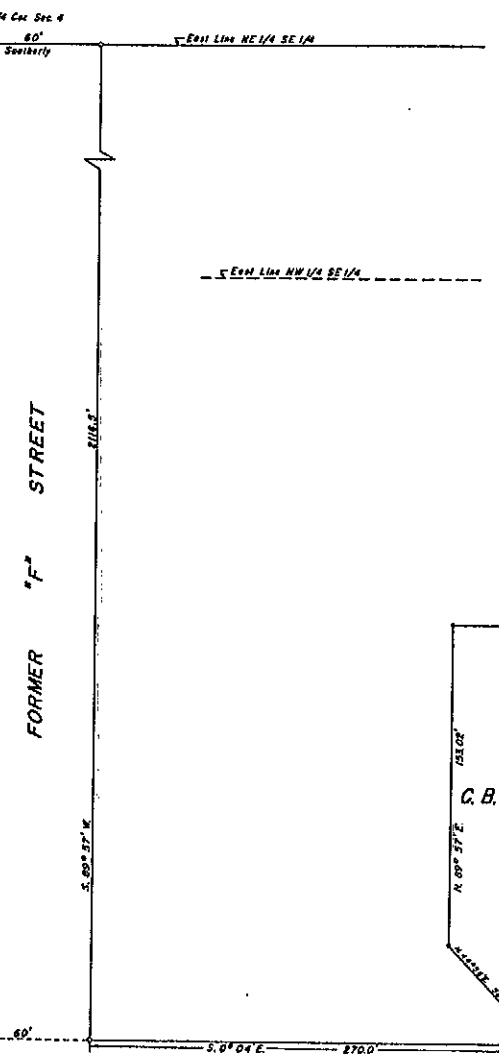
ATLAS REPRODUCTION



LOCATION IN SECTION SCALE: 1" = 1000'



VICINITY MAP SCALE: 1" = 500'



CB&Q ADDITION NO. 3 TO THE CITY OF CASPER
 BEING A PORTION OF THE NW 1/4 SE 1/4, SECTION 4, T. 33 N., R. 79 W. OF 6TH PRINCIPAL MERIDIAN
 NATRONA COUNTY, WYOMING

252/330

CERTIFICATE OF PLATTING

STATE OF ILLINOIS
 COUNTY OF COOK

This is to certify that the Addition shown on this plat is to be known as C.B. & Q. ADDITION NO. 3 and more particularly described as follows:
 A parcel of land in the NW 1/4 SE 1/4 Section 4, T. 33 N., R. 79 W., 6th Principal Meridian, Natrona County, Wyoming located east of Center Street, City of Casper, Wyoming, south of Highway U.S. 87 and south of C.B. & Q. ADDITION NO. 2 and National Supply Tract, described as:
 Commencing on the east line of the NE 1/4 SE 1/4 Section 4, and at the intersection of what was formerly the south line of "F" Street, City of Casper, which point is 60 feet southerly of the northeast corner of NE 1/4 SE 1/4, thence S. 89° 57' W. along former south line of East "F" Street a distance of 2182.5 feet to the intersection of the east line of Center Street, thence S. 0° 04' E. along east line of Center Street a distance of 1145.4 feet to the southeast corner of the C.B. & Q. ADDITION NO. 2, a brass cop monument and property marker (same S. 0° 04' E. along east line of Center Street a distance of 176.56 feet to the southeast corner of the National Supply Tract, a property monument (first of this corner), a brass cop property marker has been established from this survey, which point is the point of beginning for C.B. & Q. ADDITION NO. 3; thence N. 89° 57' E. a distance of 125.0 feet to a point, which point bears S. 89° 57' W. a distance of 174.83 feet to a point which point was established from projecting this southerly from the brass cop property monuments on the east side of the C.B. & Q. ADDITION NO. 2 a distance of 174.83 feet to the southeast corner of the C.B. & Q. ADDITION NO. 3; thence S. 89° 57' W. a distance of 125.0 feet to the southeast corner, which point is located on the east line of Center Street, thence N. 0° 04' W. along the east line of Center Street a distance of 200.0 feet to the point of beginning comprising an area of 0.574 acres, more or less.

CHICAGO, BURLINGTON & QUINCY RAILROAD CO.
 BY: *[Signature]*
 Director, Industrial Development and Real Estate.

STATE OF ILLINOIS
 COUNTY OF COOK

On this 31 day of December, 1927, before me personally appeared G. F. Deibel to me personally known, who, being by me duly sworn, did say that he is Director, Industrial Development and Real Estate, Chicago, Burlington & Quincy Railroad Company and that he executed the foregoing plat in behalf of said corporation and said G. F. Deibel in his capacity as Director, Chicago, Burlington & Quincy Railroad Company, and that the instrument to be the true and valid deed of said corporation.

My Commission expires: May 31, 1929

CERTIFICATE OF SURVEYOR

STATE OF WYOMING,
 County of Natrona

I, Elmer H. Johnston, of Casper, Wyoming, doing business as Johnston, Inc., Engineering Surveys, hereby certify that this map was made from notes taken during an actual survey made by me during May, 1927, which notes correctly show the location of the C.B. & Q. ADDITION NO. 3 in the NW 1/4 SE 1/4 Section 4, T. 33 N., R. 79 W., 6th P.M., Natrona County, Wyoming, as monumented on the ground during said survey.

Witness my hand and seal at Casper, Wyoming, this 31 day of December, 1927.

[Signature]
 Surveyor

Subscribed in my presence and sworn to me this 1st day of January, 1927.
 My commission expires September 27, 1929

[Signature]
 Notary Public

MAP AND SURVEY
 BY
 JOHNSTON'S, INC.
 ENGINEERING SURVEYS
 234 WEST 1st STREET
 CASPER, WYOMING
 Phone 234-4058 F.B. No. 45 P. 6-14
 Job No. 67-10 Map No. 67-616-445

PLAT APPROVED

APPROVED by the Board of County Commissioners of Natrona County, Wyoming by Resolution duly passed on the 26 day of April, 1927.

ATTEST: *[Signature]*
 COUNTY CLERK SECRETARY OF BOARD
 BY: *[Signature]*
 CHAIRMAN OF BOARD

Inspected and approved on the 26 day of April, 1927.

[Signature]
 COUNTY SURVEYOR

PLAT APPROVED

APPROVED by the City Council of Casper, Wyoming by Resolution (Ordinance) No. 67-31, duly passed, adopted, and approved on the 18th day of December, 1927.

ATTEST: *[Signature]*
 CITY CLERK
 BY: *[Signature]*
 MAYOR, CITY OF CASPER

Inspected and approved on the 22 day of JANUARY, 1928

[Signature]
 CITY ENGINEER

PLAT APPROVED

APPROVED by the Community Planning Commission of Casper, Wyoming this 13 day of March, 1928, and forwarded to the City Council of Casper, Wyoming with recommendation that said be approved.

Chairman: *[Signature]* Secretary: *[Signature]*

CHICAGO, BURLINGTON & QUINCY RAILROAD CO.
 CHICAGO, ILLINOIS
 C.B. & Q. ADDITION NO. 3

SURVEY BY
 JOHNSTON'S, INC., ENGINEERING SURVEYS 234 W. 1st STREET, CASPER, WYO.

PROPERTY SURVEY
 IN NW 1/4 SE 1/4, SECTION 4, T. 33 N., R. 79 W.
 6TH P.M., NATRONA COUNTY, WYOMING

DATE: MAY, 1927 SCALE: 1" = 40'

FILED FOR RECORD in the Office of the County Clerk of Natrona County, Wyoming this 24 day of April, 1928.

[Signature]