

NORTH FACE CORNER
SEC. 17, T.16N, R.20W

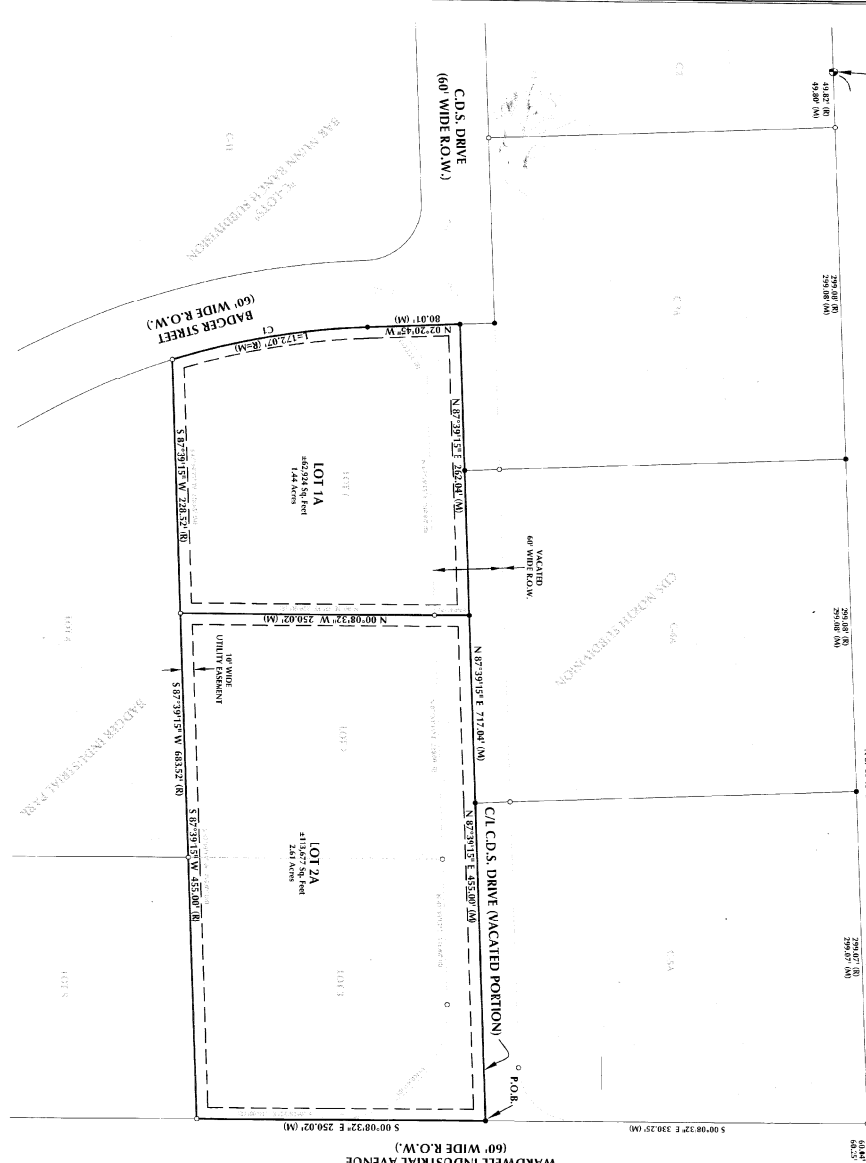
MC MURRY BOULEVARD
(60' WIDE R.O.W.)

NORTH LINE OF THE NW1/4 NE1/4
OF SECTION 17

960111

EAST FACE CORNER
SEC. 9, T.17, R.20W

WARDWELL INDUSTRIAL AVENUE
(60' WIDE R.O.W.)



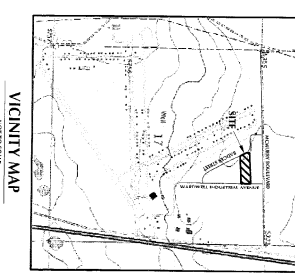
CURVE	ARC LENGTH	RADIUS	BEHALF ANGLE	CHORD BEARING	CHORD LENGTH
C1	172.00'	617.30'	157°29'22"	N 15°21'58" W	171.51'

NOTES:

- BEARINGS ARE BASED ON THE NORTH LINE OF THE NORTHEAST 1/4 OF SECTION 17 AS SHOWN ON THE PLAT OF THE SECTION 17 AS SUBDIVISION.
- BEARINGS AND DISTANCES ARE GIVEN IN FEET AND DECIMALS THEREOF.
- BEARINGS AND DISTANCES ARE GIVEN IN METERS AND DECIMALS THEREOF.
- BEARINGS AND DISTANCES ARE GIVEN IN FEET AND DECIMALS THEREOF.
- BEARINGS AND DISTANCES ARE GIVEN IN METERS AND DECIMALS THEREOF.
- BEARINGS AND DISTANCES ARE GIVEN IN FEET AND DECIMALS THEREOF.
- BEARINGS AND DISTANCES ARE GIVEN IN METERS AND DECIMALS THEREOF.

DECLARATION OF VACATION

THE PLATS ARE PART OF LOTS 1, 2, AND 3 OF BADGER INDUSTRIAL PARK, AS RECORDED IN RECORDS OF THE COUNTY CLERK OF THE COUNTY OF NATRONA, WYOMING, UNDER RECORD NO. 2013-1-12. THE PLATS ARE PART OF THE SECTION 17 AS SHOWN ON THE PLAT OF THE SECTION 17 AS SUBDIVISION.



RECORDS COUNTY CLERK, NATRONA COUNTY, WYOMING
 REC'D
 Oct 7, 2013 04:04:32 PM
 Fee: \$75.00

CERTIFICATE OF SURVEYOR

STATE OF WYOMING
 I, Richard L. Doherty, being a duly licensed and qualified Surveyor in the State of Wyoming, do hereby certify that this plat is a true and correct copy of the original plat as shown to me by the client, and that the same was made from an accurate survey of land properly conducted and reduced to a true scale, and that the same is in compliance with the provisions of the laws of the State of Wyoming governing the subdivision of land.

Richard L. Doherty
 Surveyor
 PROFESSIONAL SEAL AND SIGNATURE
 WYOMING REGISTERED SURVEYOR
 LICENSE NO. 1234

RECORDED

Filed for record in the office of the County Clerk of Natrona County, Wyoming, this 7th day of October, 2013.
 Registered No. 960111
 Kevin Velle
 County Clerk

Department of State Records
 January 2, 2015

CERTIFICATE OF DEDICATION

STATE OF WYOMING
 NATRONA COUNTY, WYOMING

I, Richard L. Doherty, being a duly licensed and qualified Surveyor in the State of Wyoming, do hereby certify that this plat is a true and correct copy of the original plat as shown to me by the client, and that the same was made from an accurate survey of land properly conducted and reduced to a true scale, and that the same is in compliance with the provisions of the laws of the State of Wyoming governing the subdivision of land.

Richard L. Doherty
 Surveyor
 PROFESSIONAL SEAL AND SIGNATURE
 WYOMING REGISTERED SURVEYOR
 LICENSE NO. 1234

APPROVED BY THE TOWN OF BAR NUNN PLANNING COMMISSION THIS 12th day of August, 2013
 and forwarded to the Town Council of Bar Nunn, Wyoming, with recommendation that said plat be approved.

Chairman: Kevin Velle Secretary: Richard L. Doherty

Approved by the Town of Bar Nunn Planning Commission this 12th day of August, 2013
 and forwarded to the Town Council of Bar Nunn, Wyoming, with recommendation that said plat be approved.

Chairman: Kevin Velle Secretary: Richard L. Doherty

APPROVALS

Approved by the Town of Bar Nunn Planning Commission this 12th day of August, 2013
 and forwarded to the Town Council of Bar Nunn, Wyoming, with recommendation that said plat be approved.

Chairman: Kevin Velle Secretary: Richard L. Doherty

CDS SOUTH SUBDIVISION
 A REPEAT OF LOTS 1, 2, AND 3 OF
 BADGER INDUSTRIAL PARK
 TOWN OF BAR NUNN, NATRONA COUNTY, WYOMING