

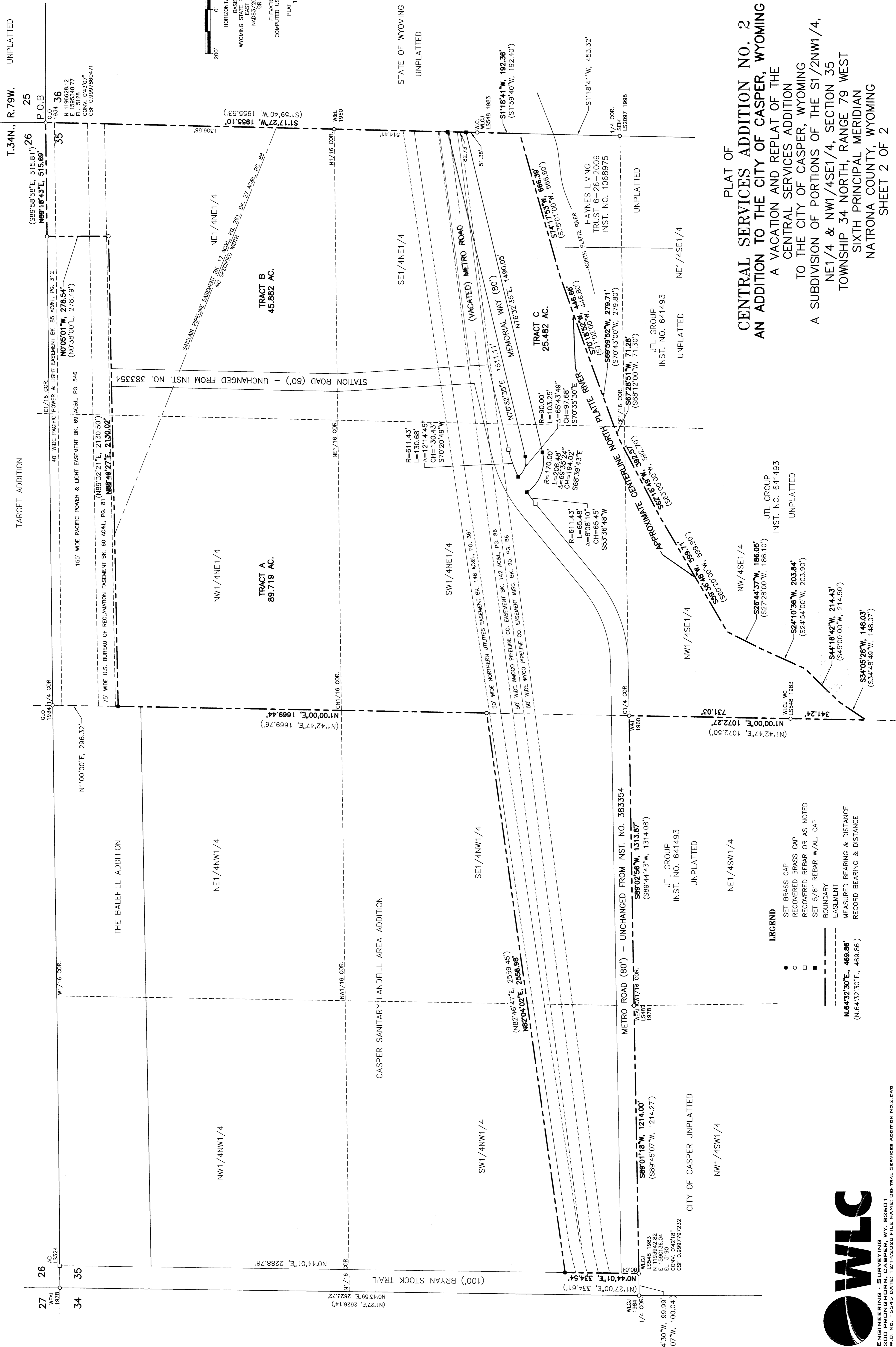
HORIZONTAL SCALE: 1"=200'  
BASIS OF BEARING:  
WYOMING STATE PLANE COORDINATE SYSTEM  
NAD83/2011 CENTRAL ZONE  
INDICATED BEARING AND DISTANCES  
ELEVATIONS ARE NAVD83  
COMPUTED USING GEOID 12A CONUS  
PLAT CLOSURE RATIO  
1:5894:36

T.34N., R.79W. UNPLATTED

TARGET ADDITION

STATE OF WYOMING  
UNPLATTED

PLAT OF  
**CENTRAL SERVICES ADDITION NO. 2**  
AN ADDITION TO THE CITY OF CASPER, WYOMING  
A VACATION AND REPLAT OF THE  
CENTRAL SERVICES ADDITION  
TO THE CITY OF CASPER, WYOMING  
A SUBDIVISION OF PORTIONS OF THE S1/2NW1/4,  
NE1/4 & NW1/4SE1/4, SECTION 35  
TOWNSHIP 34 NORTH, RANGE 79 WEST  
SIXTH PRINCIPAL MERIDIAN  
NATRONA COUNTY, WYOMING  
SHEET 2 OF 2



**LEGEND**  
● SET BRASS CAP  
○ RECOVERED BRASS CAP  
□ RECOVERED REBAR OR AS NOTED  
■ SET 5/8" REBAR W/AL. CAP  
--- BOUNDARY  
- - - EASEMENT  
- - - MEASURED BEARING & DISTANCE  
- - - RECORD BEARING & DISTANCE  
N.64°32'30"E, 469.86'  
(N.64°32'30"E, 469.86')

