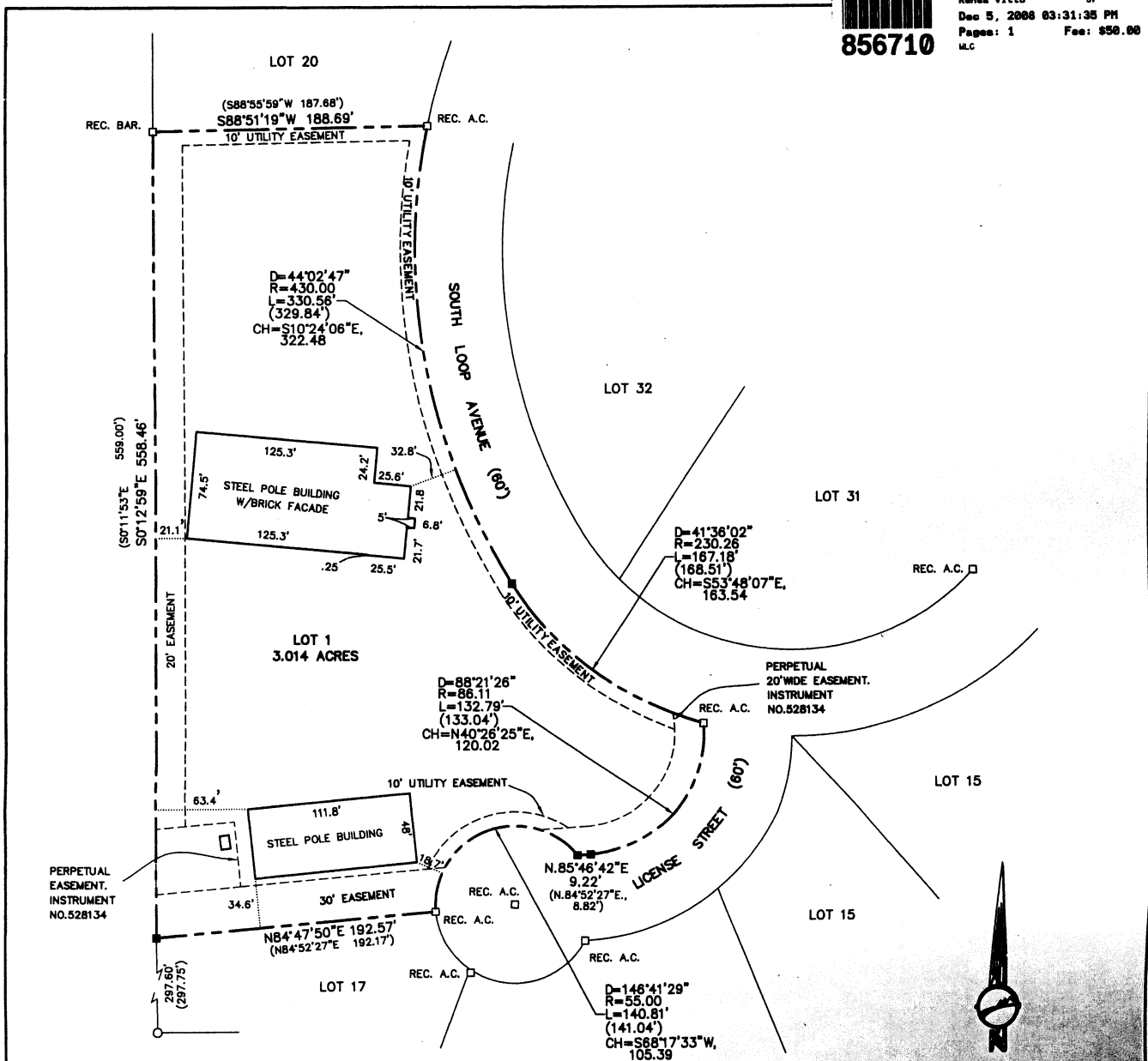


856710

NATRONA COUNTY CLERK, WYOMING
Rena Villa JF
Dec 5, 2008 03:31:35 PM
Pages: 1 Fee: \$50.00
M.C.



CERTIFICATE OF APPROVAL
STATE OF WYOMING)
COUNTY OF NATRONA) ss
I, do hereby certify that this record of survey has been examined by me and found to comply with the regulations for Natrona County, Wyoming, and is approved for recording.
William R. Johnson COUNTY SURVEYOR/DATE 12-3-08
Robert E. Hertz MSASBMS
Mr. M.R. Dowell, MD COUNTY HEALTH OFFICER/DATE

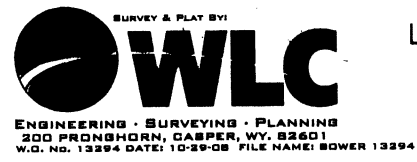
Filed for record in the office of the county clerk of Natrona County, Wyoming on this 5th day of December, 2008.
Rena Villa COUNTY CLERK
My term of office expires **January 6, 2011**

CERTIFICATE OF SURVEYOR
I, Steve M. Castle, a registered professional land surveyor, License No. 6010, do hereby certify that this plat was made from notes taken during an actual survey made by me or under my direct supervision during the month of October, 2008 and that this plat, to the best of my knowledge and belief, correctly and accurately represents said survey.

LEGEND
○ RECOVERED BRASS CAP
□ RECOVERED CORNER (AS NOTED)
■ SET 5/8" REBAR WITH ALUMINUM CAP
W.C. WITNESS CORNER
(N.89°49'14"E., 184.79') RECORDED
N.89°49'14"E., 184.79' EASEMENT
SUBDIVISION BOUNDARY

CERTIFICATE OF OWNER
CMI INC. hereby certifies that the above or foregoing subdivision, "CMI Simple Subdivision", being Lots 18 and 19 of the Amended Plat of Interstate Industrial Park, Portions of Section 32 Township 34 North, Range 79 West of the Sixth Principal Meridian, Natrona County, Wyoming as it appears on this plat is with the free consent and in accordance with the desires of the above named and undersigned owners and proprietors of said lands, the name of said subdivision shall be "CMI Simple Subdivision". Dated at Casper, Wyoming this 1st day of DECEMBER, 2008.
Chuck Bower OWNER

STATE OF WYOMING)
COUNTY OF NATRONA) ss
The foregoing instrument was acknowledged before me by *Chuck Bower, Owner, CMI INC. & CASPER MANUFACTURING INC.* on this 1st day of DECEMBER, 2008.
Witness my hand and official seal.
My commission expires: 12/31/2008
Donna L. Moore Notary Public



PLAT OF
CMI SIMPLE SUBDIVISION
A VACATION AND REPLAT OF
LOTS 18 & 19 OF AMENDED INTERSTATE INDUSTRIAL PARK
SECTION 32, TOWNSHIP 34 NORTH, RANGE 79 WEST
SIXTH PRINCIPAL MERIDIAN
NATRONA COUNTY, WYOMING