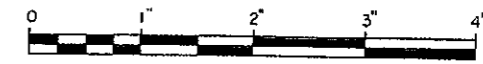


192/552

PLAT OF  
**C & NW ADDITION NO. 1**  
 TO THE CITY OF CASPER  
 BEING A PORTION OF  
 THE NE<sup>1</sup>/<sub>4</sub> SE<sup>1</sup>/<sub>4</sub>, SECTION 8  
 T. 33 N., R. 79 W., 6TH P. M.  
 NATRONA COUNTY, WYOMING



ATLAS REPRODUCTION  
 CERTIFICATE OF DEDICATION

STATE OF WYOMING  
 SS  
 COUNTY OF NATRONA

This is to certify that the addition shown on the annexed plat is to be known as C & NW ADDITION NO. 1 and more particularly described as follows:

Commencing at a point marked by a Brass Cap Monument which is the common quarter corner between Section 8 and Section 9, Township 33 North, Range 79 West of the Sixth Principal Meridian, Natrona County, Wyoming; Thence South 155.68 feet, along the line common to said Sections 8 and 9, to the point of beginning and northeast corner of said addition; Thence South 155.72 feet, along the line common to said Sections 8 and 9, to a point; Thence South 64°02' West, along the northwesterly line of West Railroad Avenue, a distance of 300 feet to a point; Thence North 25°58' West, 140 feet to a point; Thence North 64°02' East a distance of 368.18 feet to the point of beginning, containing 1.074 acres; is made with the free consent and in accordance with the desires of the undersigned owner and proprietor thereof.

ATTEST: CHICAGO AND NORTH WESTERN RAILWAY COMPANY  
 ASSISTANT SECRETARY By: PRESIDENT

STATE OF ILLINOIS  
 SS  
 COUNTY OF COOK

On this 9th day of August, 1960, before personally appeared C. J. Fitzpatrick, to me personally known, who, being by me duly sworn, did say that he is the President of Chicago and North Western Railway Company and that the seal affixed to said instrument is the corporate seal of said corporation, and that said instrument was signed and sealed on behalf of said corporation by authority of its Board of Directors and said C. J. Fitzpatrick acknowledged said instrument to be the free act and deed of said corporation.

My Commission expires: NOTARY PUBLIC

CERTIFICATE OF SURVEYOR

I, E. C. Lenhart, Professional Engineer and land surveyor of Casper, Wyoming, hereby certify that during the month of June, 1960, C & NW ADDITION NO. 1 to the City of Casper, Natrona County, State of Wyoming, situate in the NE<sup>1</sup>/<sub>4</sub> SE<sup>1</sup>/<sub>4</sub>, Section 8, Township 33 North, Range 79 West, 6th P. M., was surveyed by me as shown on this Plat. Said Plat is true and correct and accurately describes the addition and the staking of same. Dimensions are given in feet and decimals thereof.

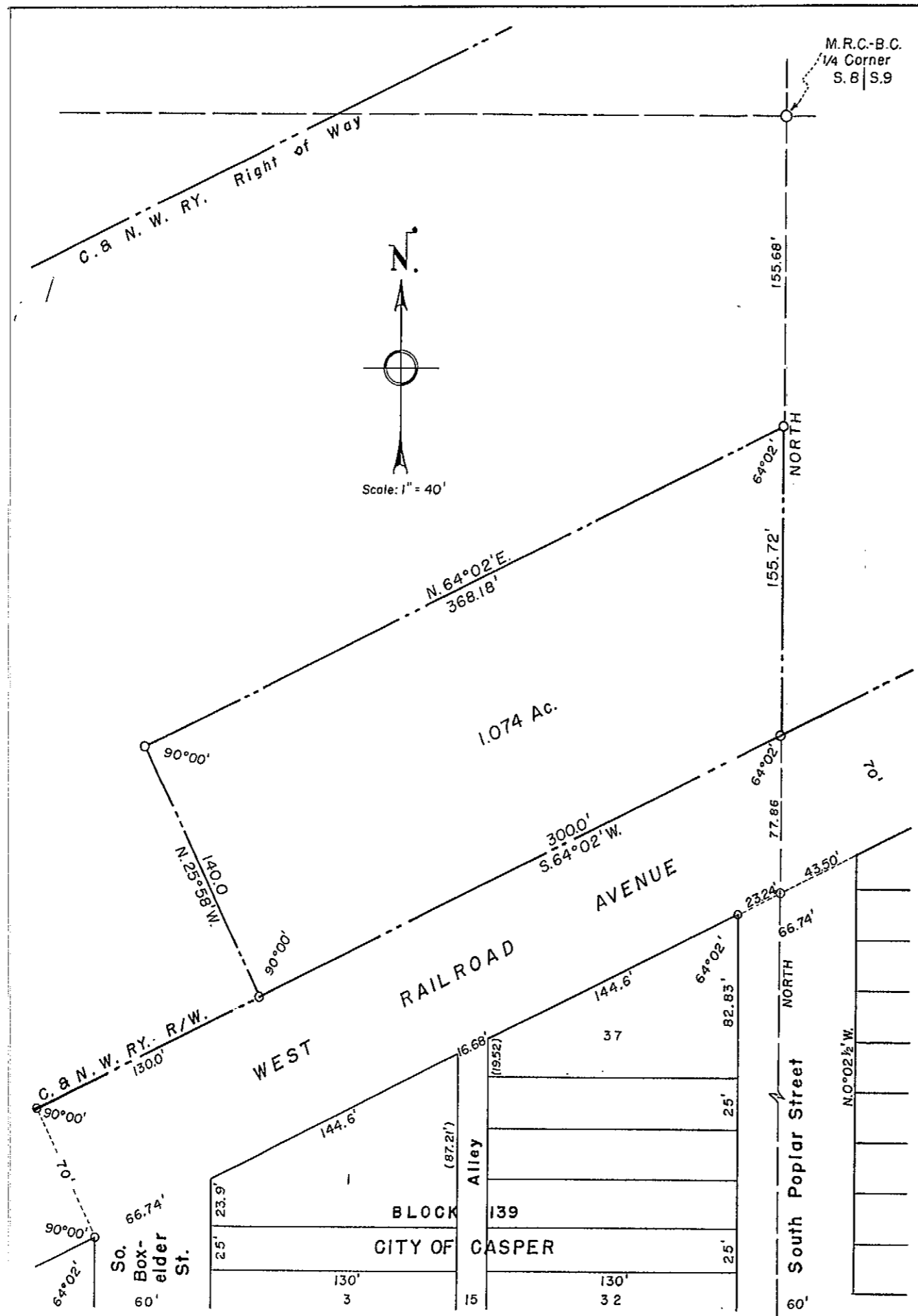
Sworn to and subscribed to before me this 18th day of July, 1960.  
 My Commission expires: MAY 27, 1961  
 NOTARY PUBLIC

APPROVED

CITY COUNCIL OF THE CITY OF CASPER, WYOMING, by Ordinance No. 111A, duly passed adopted and approved on the 17 day of July, 1960.  
 BOARD OF COUNTY COMMISSIONERS OF NATRONA COUNTY, WYOMING, by Resolution duly passed on the 10 day of August, 1960.

ATTEST: City Clerk ATTEST: County Clerk  
 Dated: Dated:

Inspected and Approved: County Surveyor



Survey & Plat by:  
 Worthington, Lenhart & Associates, Inc.  
 200 South Lowell Street, Casper, Wyoming