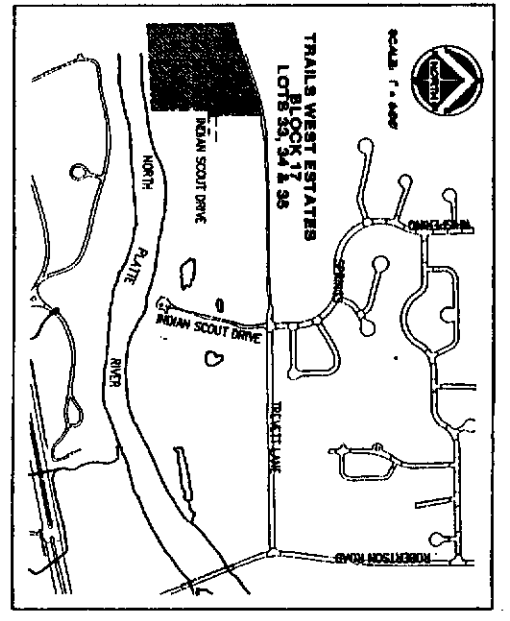
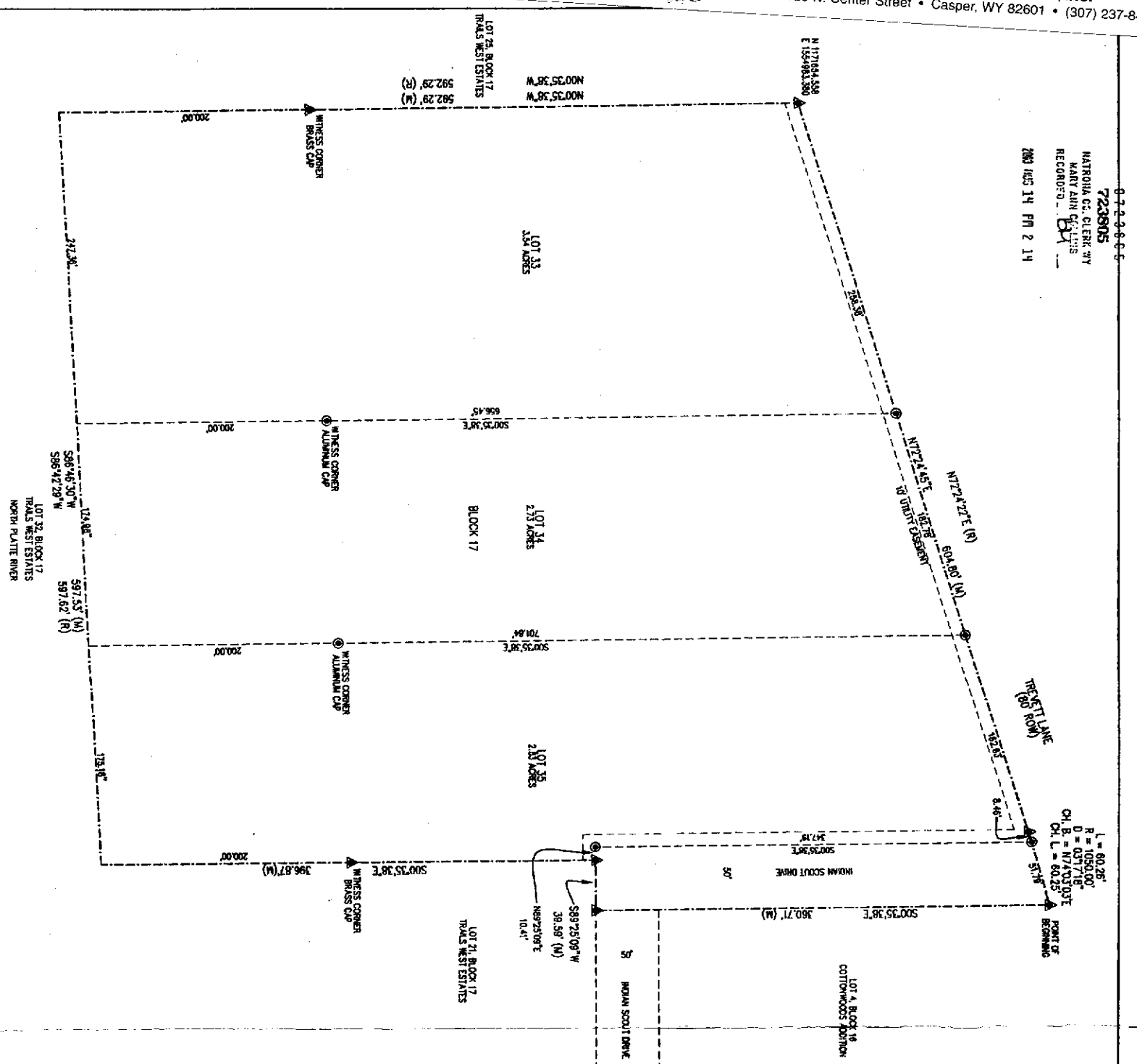


Restrictions indicating a preference, limitation or discrimination based on race, color, religion, sex, handicap, familial status, or national origin are hereby deleted to the extent such restrictions violate 42 USC 3604(c).

Compliments of:  
**FIRST AMERICAN TITLE INSURANCE CO., INC.**  
120 N. Center Street • Casper, WY 82601 • (307) 237-8486

0-2-0-0-0-0-0  
**723805**  
NATRONA CO. CLERK WY  
MARY ANN DE LUS  
RECORDED BY  
MAR 14 PM 2 14

**C.E.D.I.**  
Civil Engineering Professionals, Inc.  
317 East Lincoln Street • Casper, Wyoming 82601  
(307) 237-8486 • Fax (307) 234-4881



# 2105  
lot 5, Block 16 Cottonwood  
Addition and Lots 22, 23 & 24  
Block 17 Trails West Estates as  
Trails West Estates Block 17  
Instrument #723805  
Recorded 08-14-03

**CERTIFICATE OF DEDICATION**  
STATE OF WYOMING } ss  
COUNTY OF NATRONA } ss  
THE UNDERSIGNED, CHANG H. & PAMELA J. EVENT, BRITNEY P. BLAKE, DOROTHY L. SHARP, AND DAVID K. DUBAY, ALL OF THE COUNTY OF NATRONA, STATE OF WYOMING, DO HEREBY CERTIFY THAT THE TRACT OF LAND DESCRIBED IN THE FORGONE INSTRUMENT WAS ACQUIRED BY US AS SHOWN HEREON, AND WE HEREBY DEDICATE TO THE PUBLIC AND THE OWNERS HEREBY CONSTITUTED, THE TRACT OF LAND DESCRIBED AND SHOWN ON THIS PLAN, UNDER AND ALONG THE STRIPS OF LAND SHOWN ON THIS PLAN.  
THE TRACT OF LAND, AS IT APPEARS ON THIS PLAN, IS DESIGNATED IN THE FORGONE INSTRUMENT AND IN THE FORGONE INSTRUMENT, AND WE HEREBY DEDICATE TO THE PUBLIC AND THE OWNERS HEREBY CONSTITUTED, THE TRACT OF LAND DESCRIBED AND SHOWN ON THIS PLAN, UNDER AND ALONG THE STRIPS OF LAND SHOWN ON THIS PLAN.  
THE ABOVE DESCRIBED TRACT OF LAND CONTAINS 80 ACRES, MORE OR LESS, AND IS SUBJECT TO ANY RIGHTS AND INTERESTS, RESERVATIONS, ENCUMBRANCES AND ENCUMBRANCES WHICH HAVE BEEN LEGALLY ACQUIRED.  
THE TRACT OF LAND, AS IT APPEARS ON THIS PLAN, IS DESIGNATED IN THE FORGONE INSTRUMENT AND IN THE FORGONE INSTRUMENT, AND WE HEREBY DEDICATE TO THE PUBLIC AND THE OWNERS HEREBY CONSTITUTED, THE TRACT OF LAND DESCRIBED AND SHOWN ON THIS PLAN, UNDER AND ALONG THE STRIPS OF LAND SHOWN ON THIS PLAN.  
THE ABOVE DESCRIBED TRACT OF LAND CONTAINS 80 ACRES, MORE OR LESS, AND IS SUBJECT TO ANY RIGHTS AND INTERESTS, RESERVATIONS, ENCUMBRANCES AND ENCUMBRANCES WHICH HAVE BEEN LEGALLY ACQUIRED.  
COMING AT THE WEST W. CORNER OF SAID SECTION 22, MONUMENTED BY A BRASS CAP;  
THENCE S89°11'07"E, A DISTANCE OF 2090.74 FEET TO THE NORTHEAST CORNER OF THE PARCEL;  
THENCE S00°35'38"E, ALONG THE EAST LINE OF THE PARCEL, A DISTANCE OF 360.71 FEET TO A POINT MONUMENTED BY A BRASS CAP, AND LOCATED ON THE SOUTH LINE OF MOHAM SCOUT DRIVE;  
THENCE S89°25'09"E, ALONG THE SOUTH LINE OF MOHAM SCOUT DRIVE, A DISTANCE OF 360.71 FEET TO A POINT MONUMENTED BY A BRASS CAP;  
THENCE S89°25'09"E, A DISTANCE OF 360.71 FEET TO THE NORTHEAST CORNER OF THE PARCEL, MONUMENTED BY A BRASS CAP;  
THENCE S89°25'09"E, ALONG THE NORTHERN LINE OF THE PARCEL, A DISTANCE OF 360.71 FEET TO THE SOUTHWEST CORNER OF THE PARCEL, LOCATED WITHIN THE NORTH PLATTE RIVER AND MONUMENTED BY A BRASS CAP LOCATED 60.25 FEET FROM THE ACTUAL CORNER LOCATION;  
THENCE S89°25'09"E, ALONG THE WEST LINE OF THE PARCEL, A DISTANCE OF 597.82 FEET TO THE NORTHEAST CORNER OF THE PARCEL, MONUMENTED BY A BRASS CAP;  
THENCE N72°45'E, ALONG THE NORTHERN LINE OF THE PARCEL, A DISTANCE OF 60.25 FEET FROM THE ACTUAL CORNER LOCATION;  
THENCE N72°45'E, ALONG THE SOUTH LINE OF THE PARCEL, A DISTANCE OF 360.71 FEET TO THE NORTHEAST CORNER OF THE PARCEL, MONUMENTED BY A BRASS CAP;  
THENCE S89°25'09"E, ALONG THE NORTHERN LINE OF THE PARCEL, AND THE SOUTHERN LINE OF MOHAM SCOUT DRIVE, A DISTANCE OF 60.25 FEET TO A POINT OF CURVATURE, MONUMENTED BY A BRASS CAP;  
THENCE ALONG A CURVE TO THE RIGHT HAVING A RADIUS OF 1000 FEET, AN ARC LENGTH OF 30.44 FEET, AN INTERIOR ANGLE OF 10.41°, A CHORD BEING 597.82 FEET TO THE POINT OF BEGINNING, MONUMENTED BY A BRASS CAP;  
THENCE S89°25'09"E, A DISTANCE OF 360.71 FEET TO THE POINT OF BEGINNING.  
THE POINT OF BEGINNING IS LOCATED ON THE SOUTH LINE OF MOHAM SCOUT DRIVE, A DISTANCE OF 60.25 FEET FROM THE ACTUAL CORNER LOCATION.

**CERTIFICATE OF SURVEYOR**  
STATE OF WYOMING } ss  
COUNTY OF NATRONA } ss  
I, WILLIAM R. FRIMBERG, A REGISTERED PROFESSIONAL LAND SURVEYOR, LICENSE NO. 6524, DO HEREBY CERTIFY THAT I HAVE SURVEYED THE TRACT OF LAND DESCRIBED IN THE FORGONE INSTRUMENT AND SHOWN HEREON, AND WE HEREBY DEDICATE TO THE PUBLIC AND THE OWNERS HEREBY CONSTITUTED, THE TRACT OF LAND DESCRIBED AND SHOWN ON THIS PLAN, UNDER AND ALONG THE STRIPS OF LAND SHOWN ON THIS PLAN.  
THE FORGONE INSTRUMENT WAS ACKNOWLEDGED BEFORE ME BY WILLIAM R. FRIMBERG THIS \_\_\_\_\_ DAY OF \_\_\_\_\_, 2007.  
WITNESSES MY HAND AND OFFICIAL SEAL, THIS \_\_\_\_\_ DAY OF \_\_\_\_\_, 2007.  
WITNESSES BY HAND AND OFFICIAL SEAL:  
BY COMMISSION EXPIRES \_\_\_\_\_

**APPROVALS**  
APPROVED BY THE CITY OF CASPER PLANNING AND ZONING COMMISSION OF CASPER, WYOMING  
APPROVED BY THE CITY CLERK OF CASPER, WYOMING  
APPROVED BY THE CITY ENGINEER OF CASPER, WYOMING  
APPROVED BY THE CITY CLERK OF CASPER, WYOMING  
APPROVED BY THE CITY CLERK OF CASPER, WYOMING  
APPROVED BY THE CITY CLERK OF CASPER, WYOMING  
APPROVED BY THE CITY CLERK OF CASPER, WYOMING  
APPROVED BY THE CITY CLERK OF CASPER, WYOMING

INSPECTED AND APPROVED THIS \_\_\_\_\_ DAY OF August, 2007.  
COUNTY SURVEYOR

**LEGEND**  
▲ SET BRASS CAP  
● SET MONUMENT 5/8" REBAR  
○ FOUND MONUMENT AS NOTED

REPLAT OF  
LOT 5, BLOCK 16, COTTONWOOD ADDITION AND  
LOTS 22, 23 & 24, BLOCK 17, TRAILS WEST ESTATES  
AS  
LOTS 33, 34 & 35, BLOCK 17  
TRAILS WEST ESTATES  
TO THE CITY OF CASPER, WYOMING  
BEING A PORTION OF THE  
NEWSMA SECTION 22, T.33N., R.80W., 6TH P.M.,  
NATRONA COUNTY WYOMING