

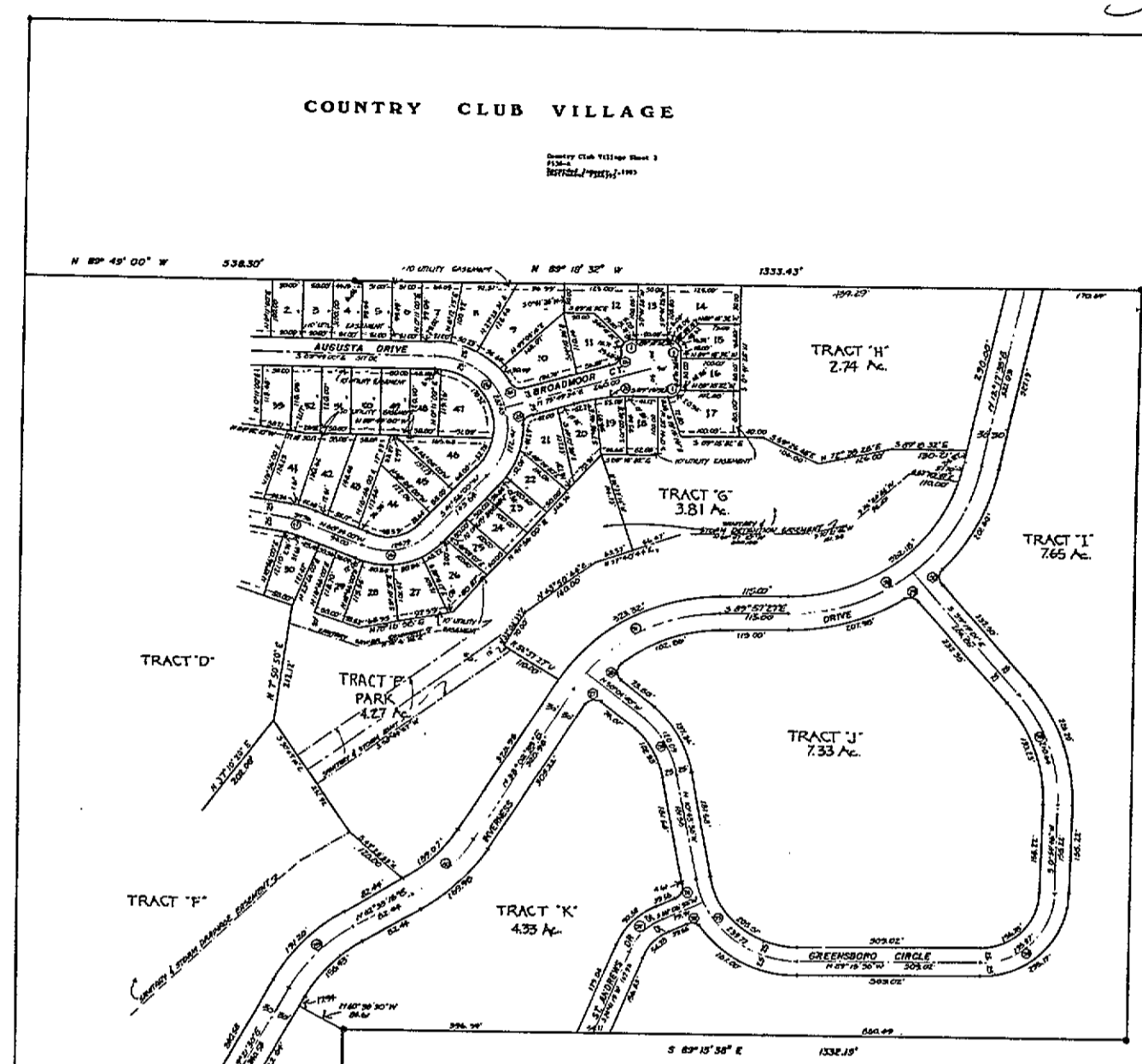
344395

COUNTRY CLUB VILLAGE

Country Club Village Sheet 2
 12/22/21, 12/23/21, 1/13/22



SCALE 1"=80'



CENTERLINE CURVE DATA

NUMBER	DELTA	RADIUS	ARC	TANGENT
1	102° 57' 28"	300.00'	339.08'	376.87'
2	75° 42' 25"	300.00'	396.41'	427.71'
3	30° 22' 30"	150.00'	79.52'	40.72'
4	30° 22' 30"	244.37'	129.85'	66.34'
5	90° 00' 00"	100.00'	157.08'	100.00'
6	90° 00' 00"	100.00'	157.08'	100.00'
7	67° 48' 00"	300.00'	328.56'	372.84'
8	54° 48' 41"	724.10'	400.76'	276.20'
9	36° 48' 00"	290.00'	469.70'	326.26'
10	36° 15' 00"	610.00'	366.24'	199.47'
11	5° 25' 20"	610.00'	57.37'	26.71'
12	35° 44' 20"	725.99'	474.40'	280.79'
13	21° 00' 00"	300.00'	102.36'	56.60'
14	39° 48' 00"	125.18'	86.84'	45.25'
15	124° 48' 00"	125.00'	287.43'	279.11'
16	71° 30' 00"	100.00'	124.79'	71.99'
17	14° 50' 00"	150.00'	37.36'	19.06'
18	35° 00' 00"	100.00'	48.65'	22.07'
19	15° 00' 00"	100.00'	36.16'	19.17'
20	14° 31' 54"	487.09'	121.17'	60.99'
21	31° 01' 34"	590.75'	333.40'	172.42'
22	119° 00' 00"	740.47'	492.34'	406.19'
23	79° 46' 00"	150.00'	123.08'	112.52'
24	134° 36' 31"	100.00'	284.86'	286.91'
25	24° 00' 00"	176.64'	73.99'	37.95'
26	44° 00' 00"	325.61'	250.05'	151.54'
27	47° 30' 00"	295.00'	249.71'	129.29'
28	31° 26' 09"	306.00'	193.23'	109.04'
29	53° 11' 48"	300.00'	178.81'	89.42'
30	27° 30' 49"	300.00'	154.82'	79.02'
31	51° 00' 00"	295.00'	273.48'	160.11'
32	77° 46' 00"	336.00'	454.99'	370.07'
33	40° 15' 47"	300.00'	210.64'	109.87'
34	89° 49' 36"	175.00'	195.97'	124.62'
35	16° 30' 00"	175.00'	239.77'	142.96'
36	39° 19' 02"	175.00'	170.09'	62.52'
37	41° 25' 34"	190.00'	72.30'	37.81'

CURB RETURN DATA

NUMBER	DELTA	RADIUS	ARC	TANGENT
1	90° 00' 00"	20.00'	31.42'	20.00'
2	95° 37' 26"	"	55.36'	22.07'
3	86° 19' 40"	"	50.10'	16.73'
4	100° 56' 30"	"	55.25'	24.25'
5	54° 06' 47"	"	29.36'	16.04'
6	85° 46' 47"	"	30.29'	16.91'
7	94° 21' 32"	"	32.94'	21.58'
8	78° 47' 19"	"	27.50'	16.48'
9	94° 23' 02"	"	32.96'	21.68'
10	87° 56' 06"	"	33.87'	19.27'
11	36° 21' 47"	"	24.34'	23.16'
12	5° 02' 05"	"	20.61'	6.99'
13	46° 20' 11"	"	16.87'	11.32'
14	98° 07' 44"	"	34.36'	23.06'
15	69° 37' 25"	"	24.20'	25.89'
16	78° 55' 40"	"	27.54'	16.44'
17	86° 50' 00"	"	30.20'	16.02'
18	74° 50' 50"	"	26.04'	15.24'
19	96° 32' 11"	"	33.30'	22.42'
20	71° 56' 12"	"	25.11'	14.51'
21	71° 56' 12"	"	25.11'	14.51'
22	89° 15' 01"	"	29.00'	17.77'
23	104° 26' 50"	"	36.46'	25.81'
24	74° 39' 02"	"	26.06'	15.25'
25	74° 39' 02"	20.00'	26.06'	15.25'
26	75° 00' 00"	22.63'	29.67'	17.41'
27	94° 52' 47"	20.00'	33.82'	22.56'
28	100° 36' 01"	"	35.11'	24.06'
29	89° 17' 16"	"	29.07'	17.76'
30	63° 11' 16"	"	23.07'	16.25'
31	78° 11' 50"	"	27.30'	16.25'
32	78° 11' 50"	20.00'	27.30'	16.25'

536 R