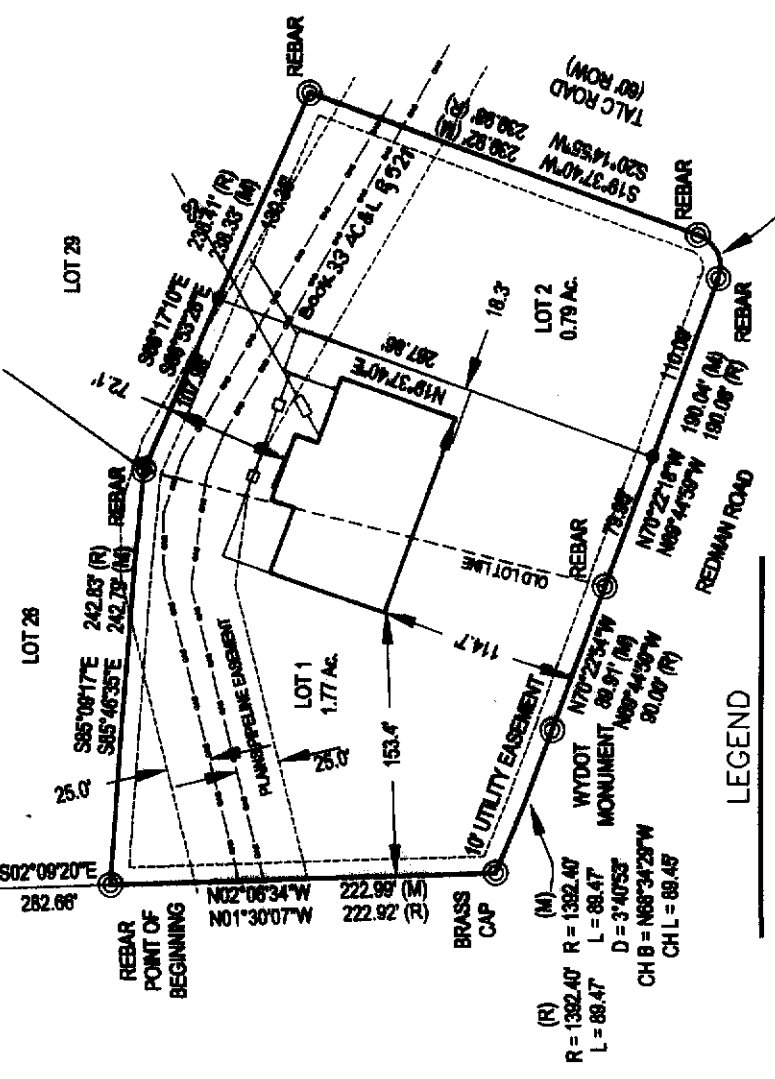


NOTE: ACCORDING TO THE PLAINS PIPELINE REPRESENTATIVE, THE EASEMENT IS 25' FROM THE SIDE OF EACH PIPELINE.



LEGEND  
 ● SET MONUMENT 5/8" REBAR & ALUMINUM CAP  
 ○ FOUND MONUMENT AS NOTED

(R) R = 1382.40' L = 88.47' D = 3°40'53" CH B = N68°34'29"W CH L = 88.45'  
 (M) R = 20.00' L = 31.42' D = 90°06'50" CH B = S64°36'56"W CH L = 28.31'

CERTIFICATE OF SIMPLE SUBDIVISION APPROVAL  
 I, DO HEREBY CERTIFY THAT THIS SIMPLE SUBDIVISION HAS BEEN EXAMINED BY ME AND FOUND TO COMPLY WITH THE REGULATIONS FOR NATRONA COUNTY, WYOMING, AND IS THEREFORE, APPROVED FOR RECORDING.  
 JAMES 1/9/12  
 COUNTY PLANNER/DATE  
 HEALTH OFFICER/DATE  
 COUNTY SURVEYOR/DATE

FILED FOR THE RECORD IN THE OFFICE OF THE COUNTY CLERK OF NATRONA COUNTY, WYOMING ON THE 27<sup>TH</sup> DAY OF NOVEMBER 2012.  
 My term of office expires January 5, 2015



**CERTIFICATE OF DEDICATION**  
 STATE OF WYOMING } SS  
 COUNTY OF NATRONA }

THE UNDERSIGNED, CC COWBOYS, INC., DOES HEREBY CERTIFY THAT THEY ARE THE OWNERS AND PROPRIETORS OF LOTS 27 & 28, OF THE AMENDED PLAT OF LOTS 25, 26, 27, 28 AND 29, AIR RAIL INDUSTRIAL PARK SITUATED WITHIN A PORTION OF THE SE 1/4 NE 1/4 OF SECTION 34, T. 34N., R. 80W., NATRONA COUNTY, WYOMING, BEING MORE PARTICULARLY DESCRIBED AS FOLLOWS:

COMMENCING AT THE NE 1/16 CORNER OF SAID SECTION 34, MONUMENTED BY A BRASS CAP;  
 THENCE S82°09'20"E, ALONG THE WEST LINE OF AIR RAIL INDUSTRIAL PARK, A DISTANCE OF 282.86 FEET TO THE NORTHWEST CORNER OF SAID LOT 27, ALSO BEING THE SOUTHWEST CORNER OF SAID LOT 26, AIR RAIL INDUSTRIAL PARK, MONUMENTED BY A REBAR AND BEING THE POINT OF BEGINNING;

THENCE S85°46'35"E, ALONG THE NORTH LINE OF SAID LOT 27 AND THE SOUTH LINE OF SAID LOT 26, A DISTANCE OF 242.79 FEET TO THE CORNER COMMON TO LOTS 26, 27, 28 & 29, AIR RAIL INDUSTRIAL PARK, MONUMENTED BY A REBAR;

THENCE S88°17'10"E, ALONG THE NORTH LINE OF SAID LOT 28 AND THE SOUTH LINE OF SAID LOT 29, A DISTANCE OF 238.33 FEET TO THE NORTHEAST CORNER OF SAID LOT 28, ALSO BEING THE SOUTHEAST CORNER OF SAID LOT 26, LOCATED ON THE WEST LINE OF TALC ROAD, MONUMENTED BY A REBAR;

THENCE S19°37'40"W, ALONG THE EAST LINE OF SAID LOT 28 AND THE WEST LINE OF TALC ROAD, A DISTANCE OF 238.92 FEET TO A POINT OF CURVATURE, MONUMENTED BY A REBAR;  
 THENCE ALONG A CURVE TO THE RIGHT HAVING A RADIUS OF 20.00 FEET, THROUGH A CENTRAL ANGLE OF 90°06'50", AN ARC DISTANCE OF 31.46 FEET, HAVING A CHORD BEARING OF S64°36'56"W, A DISTANCE OF 28.31 FEET, TO THE END OF CURVE MONUMENTED BY A REBAR;

THENCE N70°22'18"W, ALONG THE SOUTH LINE OF SAID LOT 28 ALSO BEING THE NORTH LINE OF REDMAN ROAD, A DISTANCE OF 180.04 FEET TO THE SOUTHWEST CORNER OF SAID LOT 27 AND THE SOUTHEAST CORNER OF SAID LOT 27, MONUMENTED BY A REBAR;

THENCE N70°22'18"W, ALONG THE SOUTH LINE OF SAID LOT 27 ALSO BEING THE NORTH LINE OF REDMAN ROAD, A DISTANCE OF 80.91 FEET TO A POINT OF CURVATURE, MONUMENTED BY A WYDOT CONCRETE HIGHWAY MARKER;

THENCE ALONG THE SOUTH LINE OF SAID LOT 27, THE NORTH LINE OF REDMAN ROAD AND A CURVE TO THE RIGHT HAVING A RADIUS OF 1382.40 FEET, THROUGH A CENTRAL ANGLE OF 03°40'53", AN ARC DISTANCE OF 88.47 FEET, HAVING A CHORD BEARING OF N68°34'29"W, A DISTANCE OF 88.45 FEET TO THE SOUTHWEST CORNER OF SAID LOT 27, MONUMENTED BY A BRASS CAP;  
 THENCE N02°06'34"W, ALONG THE WEST LINE OF SAID LOT 27, A DISTANCE OF 222.98 FEET TO THE POINT OF BEGINNING.

THE ABOVE DESCRIBED TRACT OF LAND CONTAINS 2.58 ACRES, MORE OR LESS, AND IS SUBJECT TO ANY RIGHTS-OF-WAY AND/OR EASEMENTS, RESERVATIONS AND ENCUMBRANCES WHICH HAVE BEEN LEGALLY ACQUIRED.

THE TRACT OF LAND, AS IT APPEARS ON THIS PLAT, IS DEDICATED WITH THE FREE CONSENT AND IN ACCORDANCE WITH THE DESIRES OF THE UNDERSIGNED OWNER AND PROPRIETOR. THE NAME OF THE SIMPLE SUBDIVISION SHALL BE "COWBOYS SIMPLE SUBDIVISION" AND THAT SAID OWNER AND PROPRIETOR HEREBY WAIVES AND RELINQUISHES ALL RIGHTS GRANTED UNDER AND BY VIRTUE OF THE HOMESTEAD EXEMPTION LAWS OF THE STATE OF WYOMING.

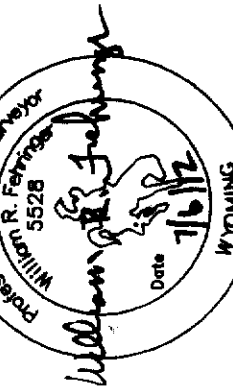
SONNY A. PILCHER - PRESIDENT OF C.C. Cowboys, Inc.

NATRONA COUNTY CLERK, WY  
 Renea Vitto  
 Nov 27, 2012 12:03:22 PM  
 Pages: 1 Fee: \$50.00  
 NATRONA COUNTY PLANNING



**CERTIFICATE OF SURVEYOR**  
 STATE OF WYOMING } SS  
 COUNTY OF NATRONA }

KNOW ALL MEN BY THESE PRESENTS: THAT I, WILLIAM R. FEHRINGER, DO HEREBY CERTIFY THAT I PREPARED THIS PLAT FROM AN ACTUAL AND ACCURATE SURVEY OF THE LAND AND THAT THE CORNER MONUMENTS SHOWN THEREON WERE PROPERLY PLACED UNDER MY DIRECT SUPERVISION, IN ACCORDANCE WITH THE SUBDIVISION REGULATIONS OF NATRONA COUNTY.



THE FOREGOING INSTRUMENT WAS ACKNOWLEDGED BEFORE ME BY WILLIAM R. FEHRINGER THIS 6TH DAY OF JULY, 2012.

WITNESS MY HAND AND OFFICIAL SEAL  
 MY COMMISSION EXPIRES 7/6/12

SAMI FAUDER  
 Notary Public  
 Natrona County, Wyoming  
 My Commission Expires 7/6/12

THE FOREGOING INSTRUMENT WAS ACKNOWLEDGED BEFORE ME BY SONNY A. PILCHER, PRESIDENT, THIS 12 DAY OF October, 2012 of CCCowboys Inc.

WITNESS MY HAND AND OFFICIAL SEAL  
 MY COMMISSION EXPIRES 7/6/12

SAMI FAUDER  
 Notary Public  
 Natrona County, Wyoming  
 My Commission Expires 7/6/12

VACATION AND REPLAT OF  
 AIR RAIL INDUSTRIAL PARK  
 AS  
 LOTS 27 & 28, AMENDED PLAT OF LOTS 25, 26, 27, 28 & 29

**COWBOYS SIMPLE SUBDIVISION**  
 BEING A PORTION OF THE  
 SE 1/4 NE 1/4 SECTION 34, T. 34N., R. 80W., 6TH P.M.  
 NATRONA COUNTY, WYOMING