

241/487

C-Y JUNIOR HIGH SCHOOL ADDITION

TO THE CITY OF CASPER, NATRONA COUNTY, WYOMING.

BEING PARTS OF:
THE S 1/2 NW 1/4 & THE NE 1/4 SW 1/4, SECTION 17
T.33N., R.79W. of 6th PRINCIPAL MERIDIAN.

CERTIFICATE OF DEDICATION

Natrona County High School, State of Wyoming, a Body Corporate and School District No. 2 in the County of Natrona and State of Wyoming, a Body Corporate, do hereby certify that the foregoing parts of the S 1/2 NW 1/4 and the NE 1/4 SW 1/4 of Section 17, T. 33 N., R. 79 W. of the 6th Principal Meridian, Natrona County, Wyoming as shown on this plat is with the free consent and in accordance with our desires, the undersigned owners and proprietors of said lands, that the said parts of the S 1/2 NW 1/4 and the NE 1/4 SW 1/4, Section 17, shall be named and designated "C-Y JUNIOR HIGH SCHOOL ADDITION TO THE CITY OF CASPER, NATRONA COUNTY, WYOMING", that the streets and public-ways shown are hereby dedicated to the use of the public. A Metes and Bounds Description of said "C-Y JUNIOR HIGH SCHOOL ADDITION TO THE CITY OF CASPER" follows:

"Beginning at the northwest corner of said NE 1/4 SW 1/4, said Section 17, and a point on the north line of Riverview Addition; Thence N. 35° 38' W., 56.80 feet to the most southerly corner of West Garden Creek Addition No. 3 to said City of Casper; Thence N. 37° 22' E., 232.06 feet along the southeast line of said Addition to a point; Thence S. 52° 38' E., along the projected southwesterly line of a 12.00 feet wide drainage easement as set forth by the recorded plat of West Garden Creek Addition No. 2 to said City of Casper, 851.62 feet to a point; Thence South, 925.84 feet to a point on the northwesterly line of Valley Hills, an Addition to said City of Casper; Thence, along said line of Valley Hills, S. 53° 00' W., 58.73 feet to a point of curve; Thence Southwesterly along the arc of a true curve to the left, having a radius of 1610.00 feet, 120.49 feet to a point on the south line of said NE 1/4 SW 1/4, Section 17; Thence, S. 88° 43' W., 334.61 feet along the south line of said NE 1/4 SW 1/4 to a point; Thence North, 328.39 feet along the easterly line of Lot 3, Block 14, Riverview Addition to the northeasterly corner thereof; Thence S. 87° 56' W., 140.00 feet along the north line of said Lot 3, to the northwesterly corner thereof; Thence North along the easterly line of Hickory Street of said Riverview Addition, 1014.20 feet to a point on the north line of Riverview Addition and said NE 1/4 SW 1/4, Section 17; Thence S. 87° 56' W., 170.40 feet along said north line to the point of beginning, and containing 17.48 acres, more or less."

NATRONA COUNTY HIGH SCHOOL, STATE OF WYOMING, A Body Corporate:
Attest: *[Signature]* SECRETARY
[Signature] PRESIDENT, BOARD OF TRUSTEES.

SCHOOL DISTRICT No. 2, IN THE COUNTY OF NATRONA, STATE OF WYOMING, A Body Corporate:
Attest: *[Signature]* SECRETARY
[Signature] PRESIDENT, BOARD OF TRUSTEES.

STATE OF WYOMING
COUNTY OF NATRONA
On this 5th day of February, 1962, before me personally appeared *Chas. Tom Ayres* and *Thomas J. Strook* President and Secretary respectively of Natrona County High School, State of Wyoming, a Body Corporate, and to me personally known and who executed the foregoing instrument and acknowledged that they executed the same in accordance with a Resolution of the Board of Trustees and as the free act and deed of said Board of Trustees, and did affix hereto the seal of said Body Corporate.

Given under my hand and notarial seal this 5th day of February, 1962.
My Commission expires on the 16th day of April, 1963.
[Signature] NOTARY PUBLIC

STATE OF WYOMING
COUNTY OF NATRONA
On this 5th day of February, 1962, before me personally appeared *Chas. Tom Ayres* and *Thomas J. Strook* President and Secretary respectively of School District No. 2 in the County of Natrona, State of Wyoming to me personally known and who executed the foregoing instrument and acknowledged that they executed the same in accordance with a Resolution of the Board of Trustees and as the free act and deed of said Board of Trustees, and did affix hereto the seal of said School District.

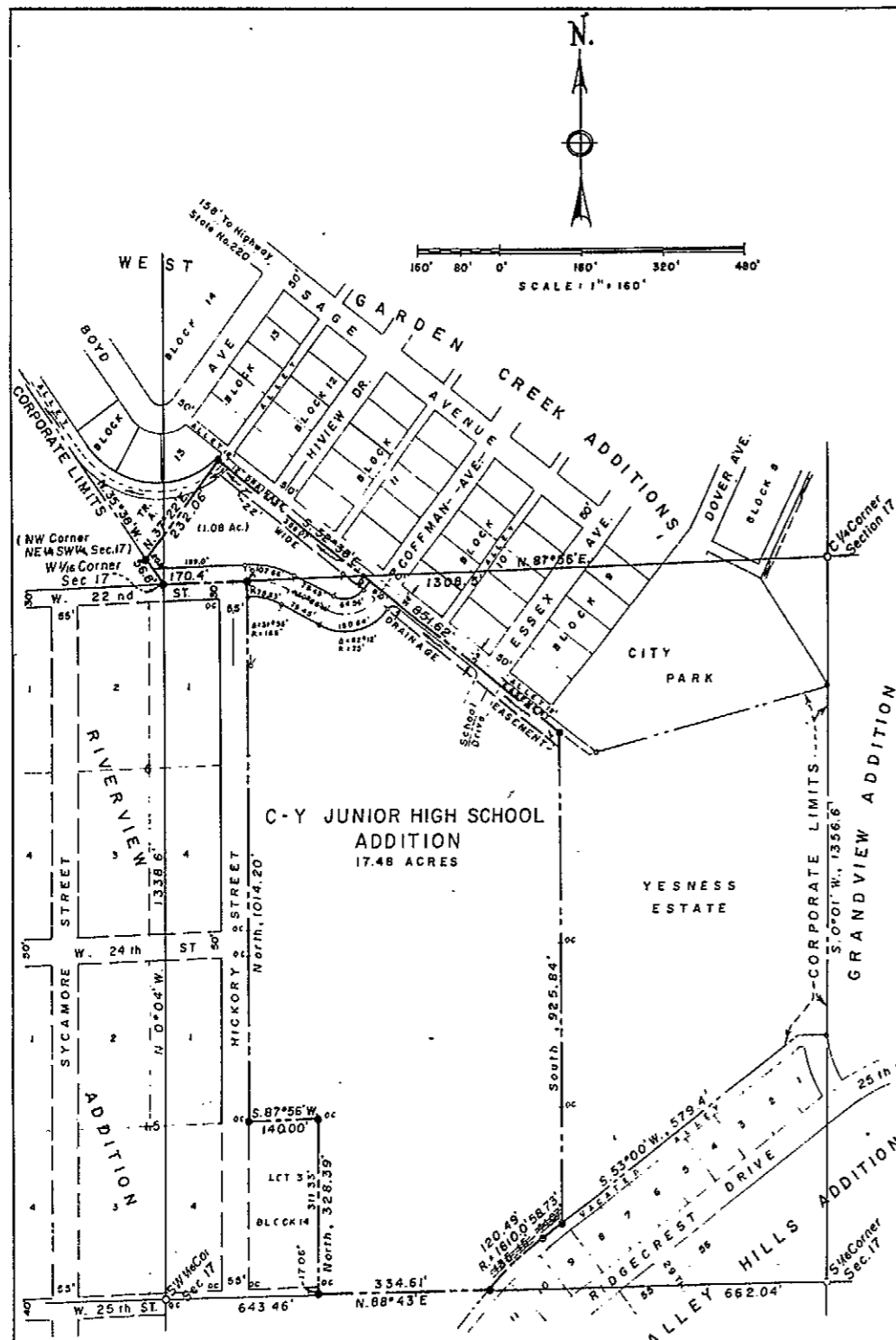
Given under my hand and notarial seal this 5th day of February, 1962.
My Commission expires on the 16th day of April, 1963.
[Signature] NOTARY PUBLIC

PLAT APPROVED

CITY COUNCIL, City of Casper, Wyoming.
By Ordinance No. 1371-A duly passed, adopted and approved on the 24th day of May, 1962.

BOARD OF COUNTY COMMISSIONERS, Natrona County, Wyoming. By Resolution duly passed on the 10 day of February, 1962.

[Signatures]
PRE. LEN. OF COUNCIL COUNTY CLERK



CERTIFICATE OF SURVEYOR

STATE OF WYOMING
COUNTY OF NATRONA
I, E. C. Lenhart of Casper, Wyoming do hereby certify that this plat was prepared from notes taken during an actual survey made by me during the month of June, 1962 and that such plat correctly represents such survey and "C-Y JUNIOR HIGH SCHOOL ADDITION TO THE CITY OF CASPER, NATRONA COUNTY, WYOMING", all dimensions are expressed in feet and decimals thereof and all courses referred to the true meridian as determined by direct solar observation, such survey as represented hereon is correct to the best of my knowledge and belief.
Wyoming Registration No. 520, P.E. & L.S.
[Signature] E. C. LENHART
Subscribed in my presence and sworn to before me this 26th day of January, 1962.
My Commission expires May 27th, 1965.

APPROVED
Community Planning Commission, City of Casper, Wyoming, by Resolution duly passed on the 19th day of June, 1962.

Attest: *[Signature]* SECRETARY
[Signature] CHAIRMAN OF COMMISSION

SURVEY AND PLAT BY
WORTHINGTON, LENHART & ASSOCIATES, INC.
200 South Lowell St., Casper, Wyoming
W O No. 10-17-A, Jan. 26, 1962
V O No. 10-17-A, May 28, 1962

INSPECTED and APPROVED
May 29, 1962
[Signature] CITY ENGINEER

241/487

C-Y JUNIOR HIGH SCHOOL ADDITION

TO THE CITY OF CASPER,
NATRONA COUNTY, WYOMING.

BEING PARTS OF:
THE S 1/2 NW 1/4 & THE NE 1/4 SW 1/4, SECTION 17
T.33 N., R.79 W. of 6th PRINCIPAL MERIDIAN.

CERTIFICATE OF DEDICATION

Natrona County High School, State of Wyoming, a Body Corporate and School District No. 2 in the County of Natrona and State of Wyoming, a Body Corporate, do hereby certify that the foregoing parts of the S 1/2 NW 1/4 and the NE 1/4 SW 1/4 of Section 17, T. 33 N., R. 79 W. of the 6th Principal Meridian, Natrona County, Wyoming as shown on this plat is with the free consent and in accordance with our desires, the undersigned owners and proprietors of said lands, that the said parts of the S 1/2 NW 1/4 and the NE 1/4 SW 1/4, Section 17, shall be named and designated "C-Y JUNIOR HIGH SCHOOL ADDITION TO THE CITY OF CASPER, NATRONA COUNTY, WYOMING", that the streets and public ways shown are hereby dedicated to the use of the public. A Metes and Bounds Description of said "C-Y JUNIOR HIGH SCHOOL ADDITION TO THE CITY OF CASPER" follows:

"Beginning at the northwest corner of said NE 1/4 SW 1/4, said Section 17, and a point on the north line of Riverview Addition; Thence N. 35° 38' W., 56.80 feet to the most southerly corner of West Garden Creek Addition No. 3 to said City of Casper; Thence N. 37° 22' E., 232.06 feet along the southeast line of said Addition to a point; Thence S. 52° 38' E., along the projected southwesterly line of a 12.00 foot wide drainage easement as set forth by the recorded plat of West Garden Creek Addition No. 2 to said City of Casper, 851.62 feet to a point; Thence South, 925.84 feet to a point on the northwesterly line of Valley Hills, an Addition to said City of Casper; Thence, along said line of Valley Hills, S. 53° 00' W., 56.73 feet to a point of curve; Thence Southwesterly along the arc of a true curve to the left, having a radius of 1610.00 feet, 120.49 feet to a point on the south line of said NE 1/4 SW 1/4, Section 17; Thence, S. 88° 43' W., 334.61 feet along the south line of said NE 1/4 SW 1/4 to a point; Thence North, 328.39 feet along the easterly line of Lot 3, Block 14, Riverview Addition to the northeasterly corner thereof; Thence S. 87° 56' W., 140.00 feet along the north line of said Lot 3, to the northwesterly corner thereof; Thence North along the easterly line of Hickory Street of said Riverview Addition, 1014.20 feet to a point on the north line of Riverview Addition and said NE 1/4 SW 1/4, Section 17; Thence S. 87° 56' W., 170.40 feet along said north line to the point of beginning, and containing 17.48 acres, more or less."

NATRONA COUNTY HIGH SCHOOL, STATE OF WYOMING, A Body Corporate:

Attest: *[Signature]*
SECRETARY

[Signature]
PRESIDENT, BOARD OF TRUSTEES

SCHOOL DISTRICT No. 2, IN THE COUNTY OF NATRONA, STATE OF WYOMING, A Body Corporate:

Attest: *[Signature]*
SECRETARY

[Signature]
PRESIDENT, BOARD OF TRUSTEES

STATE OF WYOMING

COUNTY OF NATRONA

On this 5th day of February, 1962, before me personally appeared *Chas. Am. Ayres* and *Thomas J. Shook* President and Secretary respectively of Natrona County High School, State of Wyoming, a Body Corporate, and to me personally known and who executed the foregoing instrument and acknowledged that they executed the same in accordance with a Resolution of the Board of Trustees and as the free act and deed of said Board of Trustees, and did affix hereto the seal of said Body Corporate.

Given under my hand and notarial seal this 5th day of February, 1962. *[Signature]*
NOTARY PUBLIC

My Commission expires on the 16th day of April, 1963

STATE OF WYOMING

COUNTY OF NATRONA

On this 5th day of February, 1962, before me personally appeared *Chas. Am. Ayres* and *Thomas J. Shook* President and Secretary, respectively of School District No. 2 in the County of Natrona, State of Wyoming to me personally known and who executed the foregoing instrument and acknowledged that they executed the same in accordance with a Resolution of the Board of Trustees and as the free act and deed of said Board of Trustees, and did affix hereto the seal of said School District.

Given under my hand and notarial seal this 5th day of February, 1962. *[Signature]*
NOTARY PUBLIC

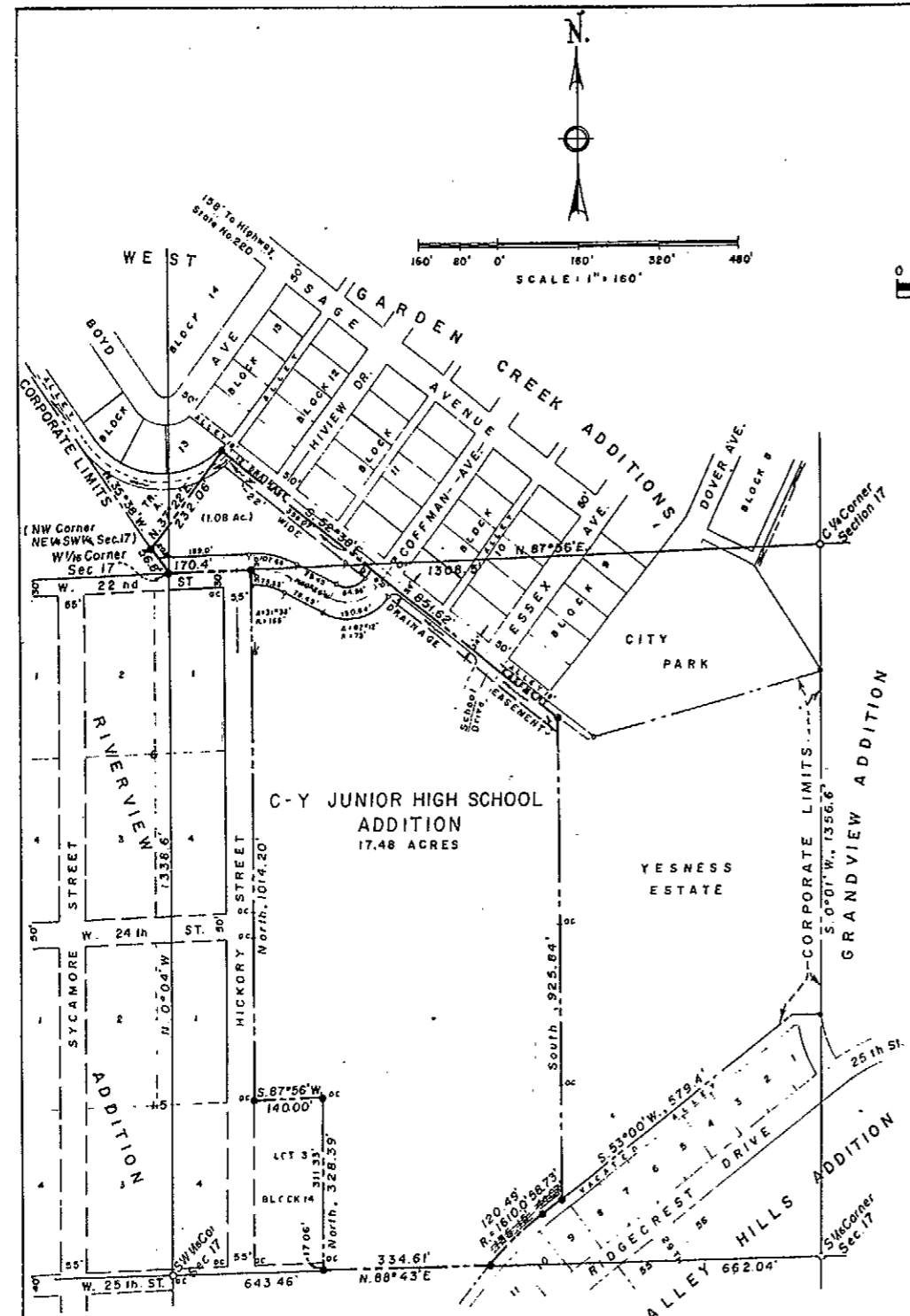
My Commission expires on the 16th day of April, 1963

PLAT APPROVED

CITY COUNCIL, City of Casper, Wyoming.
By Ordinance No. 1371-A duly passed, adopted and approved on the 28th day of May, 1962.

BOARD OF COUNTY COMMISSIONERS, Natrona County, Wyoming. By Resolution duly passed on the 10th day of April, 1962.

Attest: *[Signature]* COUNTY CLERK



CERTIFICATE OF SURVEYOR

STATE OF WYOMING ss
COUNTY OF NATRONA
I, E. C. Lenhart of Casper, Wyoming do hereby certify that this plat was prepared from notes taken during an actual survey made by me during the month of June, 1962 and that such plat correctly represents such survey and "C-Y JUNIOR HIGH SCHOOL ADDITION TO THE CITY OF CASPER, NATRONA COUNTY, WYOMING", all dimensions are expressed in feet and decimals thereof and all courses referred to the true meridian as determined by direct solar observation; such survey as represented hereon is correct to the best of my knowledge and belief.
Wyoming Registration No. 520, P.F. B.L.S.
E. C. Lenhart
E. C. LENHART
Subscribed in my presence and sworn to before me this 26th day of January, 1962.
My Commission expires May 27th, 1965

APPROVED:
Community Planning Commission, City of Casper, Wyoming, by Resolution duly passed on the 19th day of June, 1962.
[Signature]
CHAIRMAN
[Signature]
SECRETARY
SURVEY AND PLAT BY
WORTHINGTON, LENHART & ASSOCIATES, INC.
200 South Lowell St., Casper, Wyoming
W.O. No. 10-17-A-41 Jan. 26, 1962
W.O. No. 10-17-A-42 May 28, 1962
INSPECTED and APPROVED:
[Signature]
CITY ENGINEER