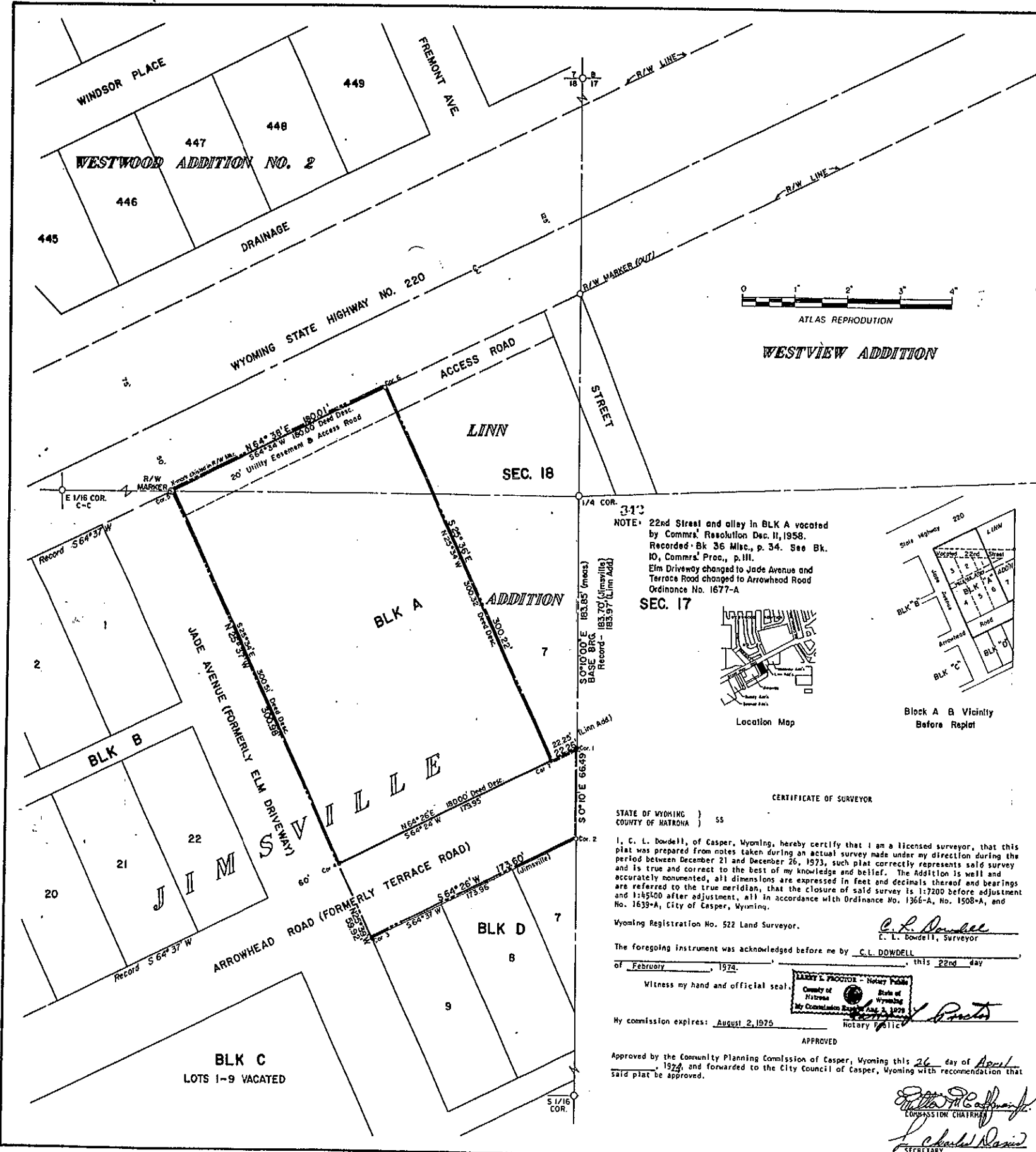


254/340

Packet 4
Feldner 5

208



LEGEND
 ● Existing Monuments Found in Place - Replaced by Brass Caps
 ○ Monuments Established - Brass Caps
 ○ Wyoming Highway Dept. R/W Marker

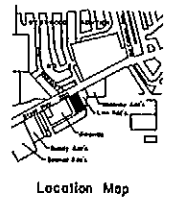
WESTVIEW ADDITION

LINN

SEC. 18

NOTE: 22nd Street and alley in BLK A vacated by Comms. Resolution Dec. 11, 1958. Recorded - Bk 36 Mlac, p. 34. See Bk. 10, Comms. Proc., p. 111. Elm Driveway changed to Jade Avenue and Terrace Road changed to Arrowhead Road Ordinance No. 1677-A

SEC. 17



Block A & Vicinity Before Replat

CERTIFICATE OF SURVEYOR

STATE OF WYOMING }
 COUNTY OF NATRONA } 55

I, C. L. Dowdell, of Casper, Wyoming, hereby certify that I am a licensed surveyor, that this plat was prepared from notes taken during an actual survey made under my direction during the period between December 21 and December 26, 1973, such plat correctly represents said survey and is true and correct to the best of my knowledge and belief. The Addition is well and accurately monumented, all dimensions are expressed in feet and decimals thereof and bearings are referred to the true meridian, that the closure of said survey is 1:7200 before adjustment and 1:45100 after adjustment, all in accordance with Ordinance No. 1366-A, No. 1508-A, and No. 1639-A, City of Casper, Wyoming.

Wyoming Registration No. 522 Land Surveyor.
 C. L. Dowdell, Surveyor

The foregoing instrument was acknowledged before me by C. L. DOWDELL this 22nd day of February, 1974.

Witness my hand and official seal:
 My commission expires: August 2, 1975

APPROVED
 Approved by the Community Planning Commission of Casper, Wyoming this 26 day of April, 1974, and forwarded to the City Council of Casper, Wyoming with recommendation that said plat be approved.

William M. Coffman
 COMMISSION CHAIRMAN
Charles Davis
 SECRETARY

PLAT & SURVEY BY
 GLOBAL ENGINEERING & LAND SURVEYING, INC.
 Number 2 English Drive
 161 South Code
 Casper, Wyoming
 Jackson, Wyoming

Cor. No.	Elevation
Cor. 1	5157.63
Cor. 2	5159.48
Cor. 3	5158.97
Cor. 4	5152.09
Cor. 5	5148.45
Cor. 6	5148.94
Cor. 7	5157.41

NOTE: Elevations Based On City Datum
 Bench Mark No. 55, Cor. Windsor Place & Fremont Avenue

PLAT OF

158499
 340
 COUNTY CLERK

"E D C ADDITION"

AN ADDITION TO THE CITY OF CASPER
 BEING A SUBDIVISION OF PARTS
 SE 1/4 NE 1/4, AND THE NE 1/4 SE 1/4, SECTION 18
 T.33N, R.75W, of the 6th P.M.
 NATRONA COUNTY, WYOMING
 SCALE: 1"=40'
 CERTIFICATE OF DEDICATION

Know all men by these presents that Educators Development Corporation, a Wyoming Corporation, does hereby certify that it is the owner of the tract of land represented upon this plat to be known as E D C Addition, said Addition being a replat of a portion of Lot 1, all of Lots 2 through 6, Block A, a portion of vacated 22nd Street and a portion of the vacated alley in said Block A of Jimsville Subdivision and an unplatted tract of land adjacent thereto. The foregoing Addition being portions of the SE 1/4 NE 1/4 and the NE 1/4 SE 1/4, Section 18, T. 33 N., R. 75 W. of the 6th P.M., Natrona County, Wyoming, more particularly described as follows:

Beginning at a point on the East Section Line of said Section 18, which point is identical to the most Southeastern Corner of "Linn Addition" and the Northern Line of Arrowhead Road at the intersection with East Section Line of said Section 18, from which point the East 1/4 Corner of said Section 18 bears N0°10'15" W a distance of 183.85 feet; thence continuing along said Section Line S0°10'15" W a distance of 66.49 feet to the intersection of the Southern Line of Arrowhead Road with said Section Line; which point is identical to the Northeastern Corner of "Block D," Jimsville Subdivision; thence along the Southern Line of Arrowhead Road S64°26' W a distance of 173.60 feet to the Northwest Corner of said "Block D" Jimsville Subdivision; thence N25°39' W a distance of 59.32 feet to a point on the Northern Line of Arrowhead Road, Jimsville Addition; thence along the Eastern Line of Jade Avenue N25°37' W a distance of 300.98 feet to the intersection with the Southern Right of Way of Wyoming State Highway 220, from which point a Wyoming Highway Department Right of Way Marker bears S64°38' W D.07 feet; thence along said Highway 220 Right of Way N64°38' E a distance of 180.01 feet to the Northwest Corner of "Linn Addition;" thence along the Western boundary of "Linn Addition;" S25°35' E a distance of 300.22 feet to the Northern Line of Arrowhead Road; thence along the Northern Line of Arrowhead Road N64°24' E a distance of 22.26 feet to the point of beginning and encompassing an area of 1.501 acres more or less.

Is with the free consent and in accordance with the desires of the undersigned owners and proprietors of said lands. All streets as shown on this plat were previously dedicated to the use of the Public on the Jimsville Subdivision Plat.
 Dated at Casper, Wyoming this 20th day of JULY, 1974.

EDUCATORS' DEVELOPMENT CORPORATION
Robert W. East
 ROBERT W. EAST, President
Kenneth G. Gastor
 Kenneth G. Gastor, Secretary

STATE OF WYOMING }
 COUNTY OF NATRONA } 55

311
 The foregoing instrument was acknowledged before me by Robert W. East & Kenneth G. Gastor, this 17 day of April, 1974.
 Witness my hand and official seal.

My commission expires: April 13, 1974
 APPROVALS

Approved by the City Council of the City of Casper, Wyoming by Ordinance No. 1727-A duly passed, adopted and approved on the 17th day of JUNE, 1974.

ATTEST: *Edwin J. Chodary*
 City Clerk
 PRESIDENT OF COUNCIL

Approved by the Board of County Commissioners of Natrona County, Wyoming by Resolution duly passed on the 26th day of July, 1974.

ATTEST: *John P. Bunde*
 County Clerk
 CHAIRMAN OF THE BOARD

Inspected and approved on the 11 day of March, 1974
 CITY ENGINEER

Inspected and approved on the 11th day of July, 1974
 COUNTY SURVEYOR

Inspected and approved on the 26th day of July, 1974
 My Term of Office Expires
 January 6, 1975
 NATRONA COUNTY HEALTH OFFICER

Filed for record in the office of the Natrona County Clerk this 7 day of Aug, 1974.
 COUNTY CLERK