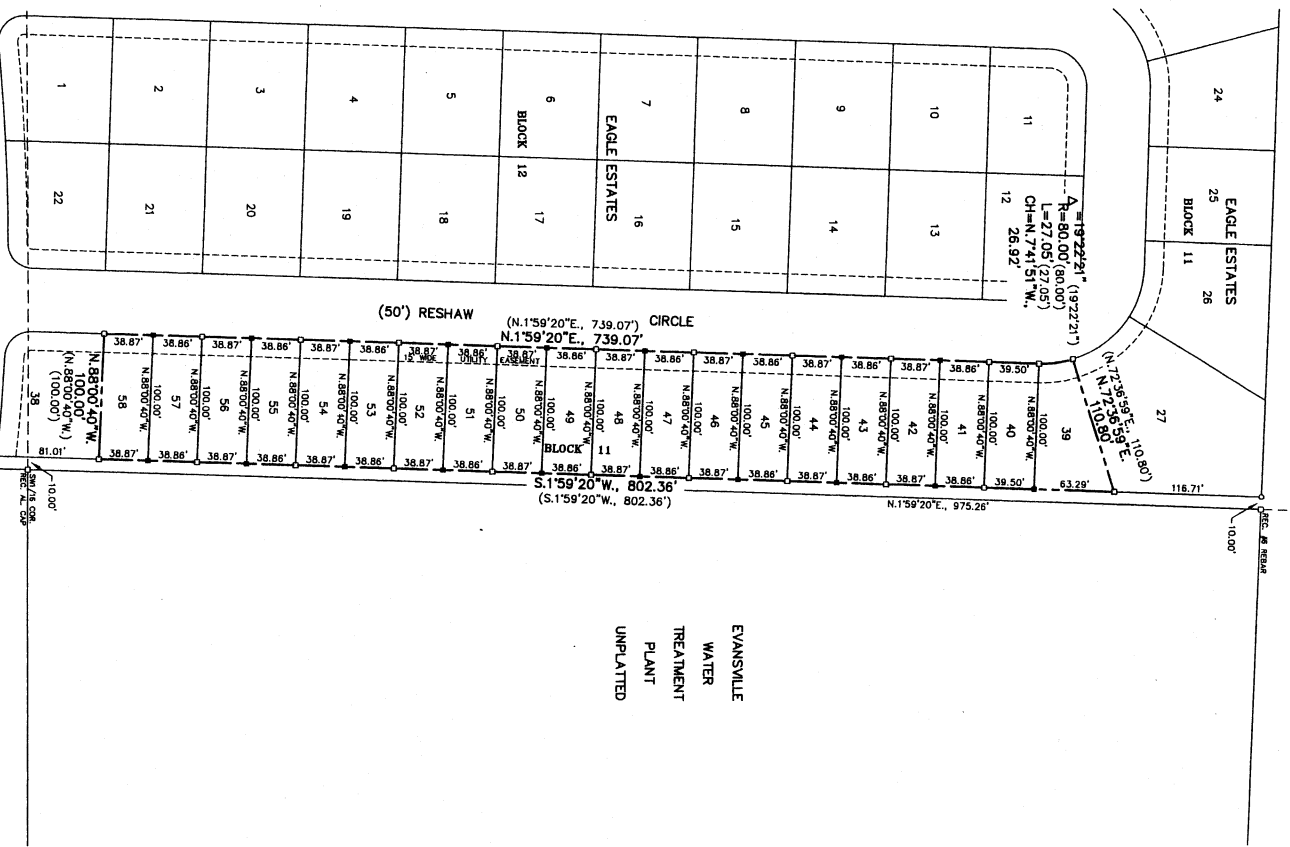
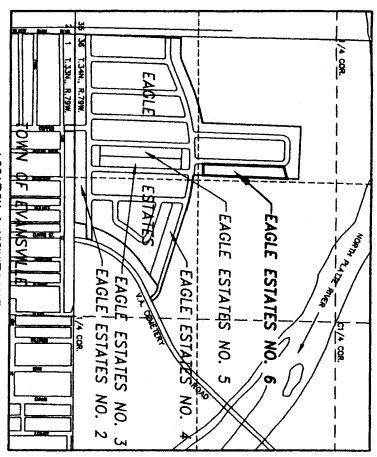
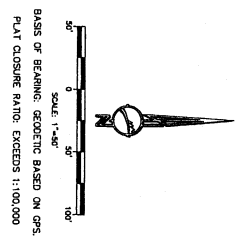


PLAT OF
 "EAGLE ESTATES NO. 6"
 AN ADDITION TO THE TOWN OF EVANSVILLE, WYOMING
 A VACATION AND REPLAT OF
 LOTS 28 THROUGH 37, INCLUSIVE, BLOCK 11
 EAGLE ESTATES
 AN ADDITION TO THE TOWN OF EVANSVILLE
 A SUBDIVISION OF A PORTION OF
 THE NW1/4SW1/4, SECTION 36
 TOWNSHIP 34 NORTH, RANGE 79 WEST
 SIXTH PRINCIPAL MERIDIAN
 NATRONA COUNTY, WYOMING
 SCALE: 1"=50'



EVANSVILLE
 WATER
 TREATMENT
 PLANT
 UNPLANTED



LEGEND:
 RECOVERED REBAR W/L CAP
 RECOVERED REBAR W/L CAP
 SUBDIVISION BOUNDARY
 N 071°13'W, 850.16'
 (N 009°W, 850.66')

CERTIFICATE OF SUPERVISOR

STATE OF WYOMING)
 COUNTY OF NATRONA) ss
 I, Steve M. Castle, of Eagle, Wyoming hereby state that this plat was prepared from notes taken during actual surveys made by me during the month of January, 2009, and that this plat correctly and accurately represents said surveys. All perimeter corners are well and to the true meridian, all being true and correct to the best of my knowledge and belief.



Witness my hand and official seal this 19th day of January, 2009.



ACKNOWLEDGEMENT

STATE OF WYOMING)
 COUNTY OF NATRONA) ss
 The foregoing instrument was acknowledged before me by Leo Burridge, Member of Success Properties LLC on this 19th day of January, 2009.
 Witness my hand and official seal.



APPROVALS
 APPROVED: From Council of the Town of Evansville, Wyoming this 19th day of January, 2009.
 ATTEST: Town Clerk
 INSPECTED AND APPROVED on this 19th day of January, 2009.
 INSPECTED AND APPROVED on this 19th day of January, 2009.

Filed for record in the Office of the County Clerk of Natrona County, Wyoming this 19th day of January, 2009.



200 ENGINEERING CAMPUS, WY 82002
 200 SURVEYING CAMPUS, WY 82002
 200 PLANNING CAMPUS, WY 82002